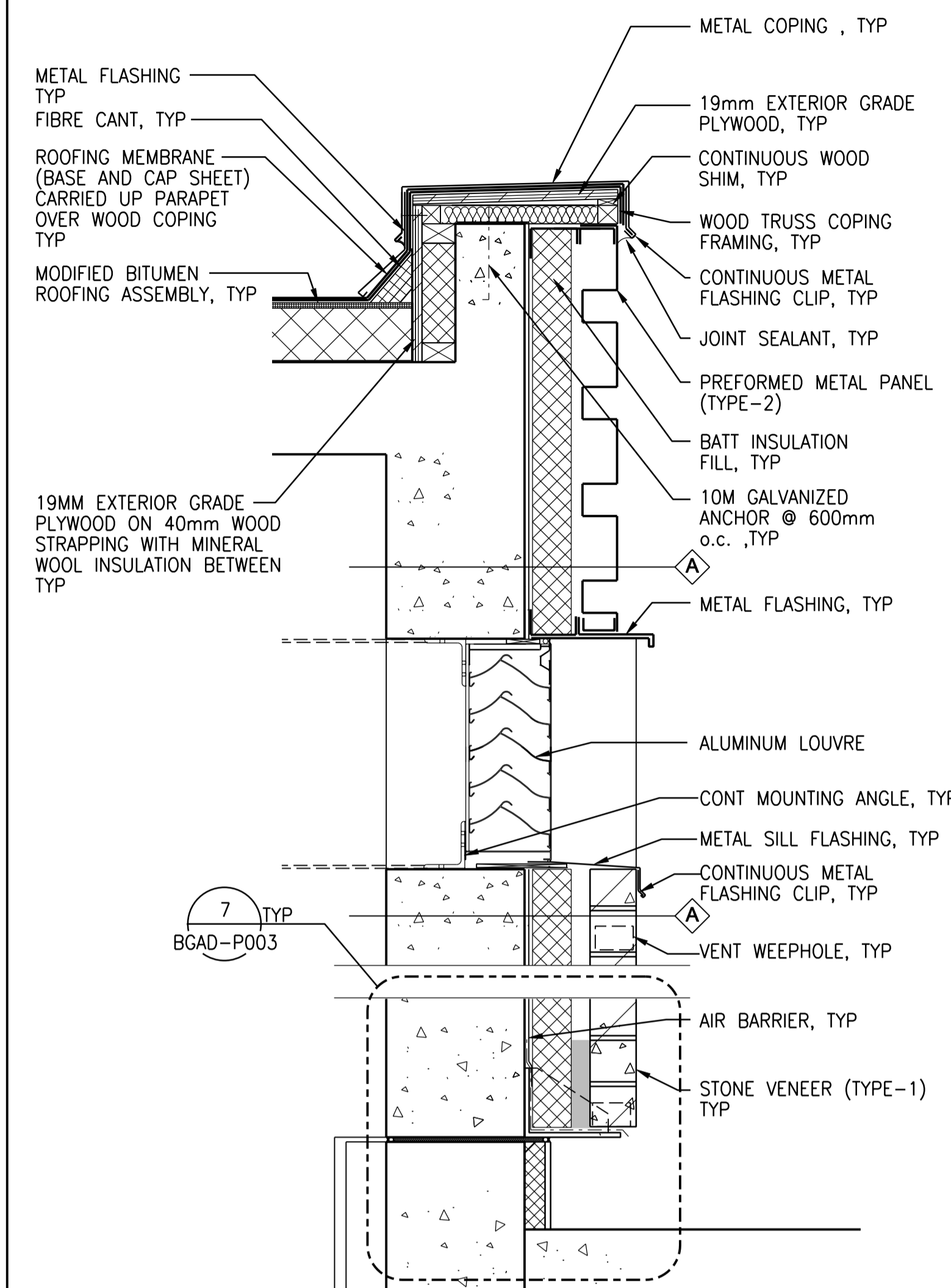
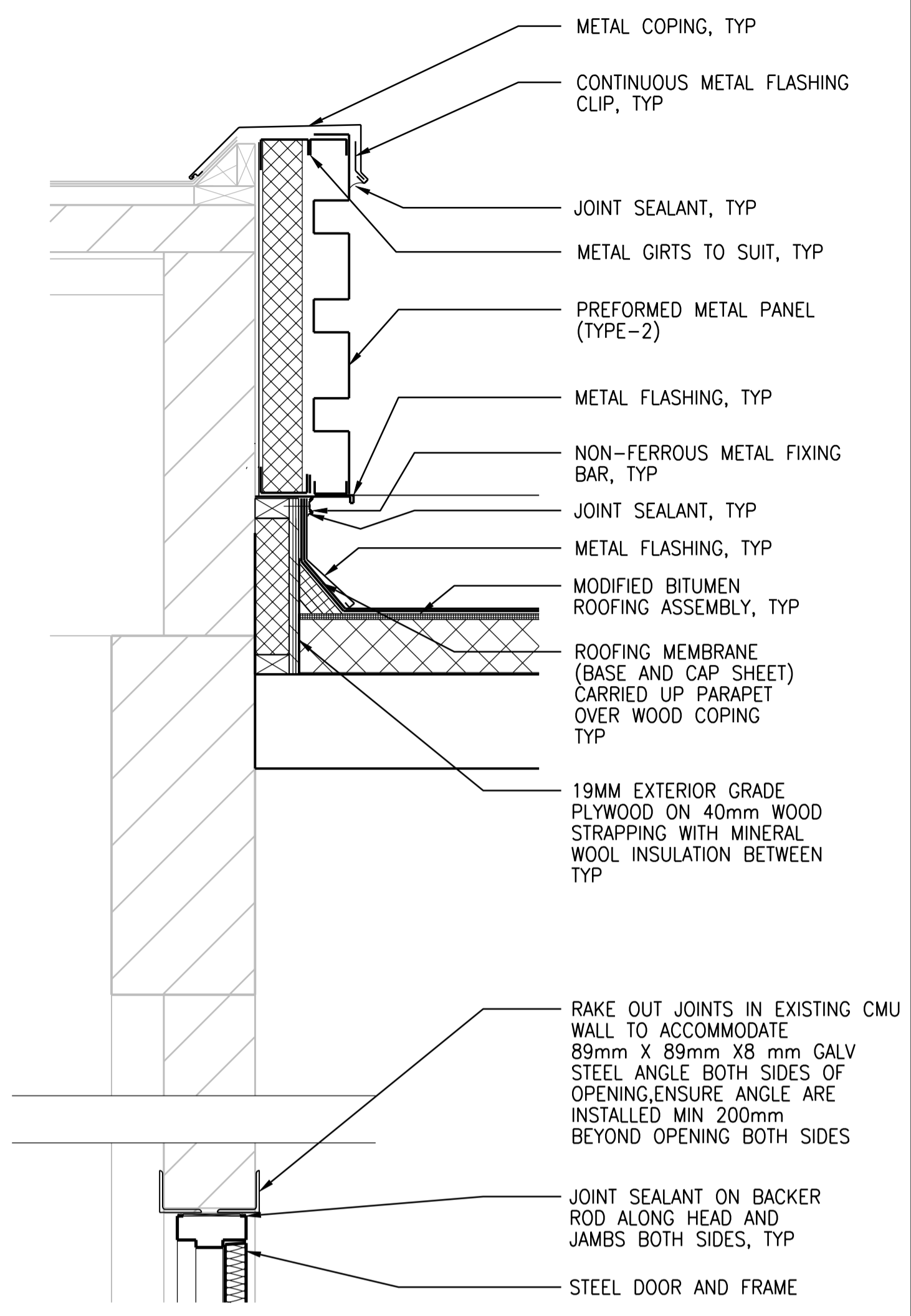


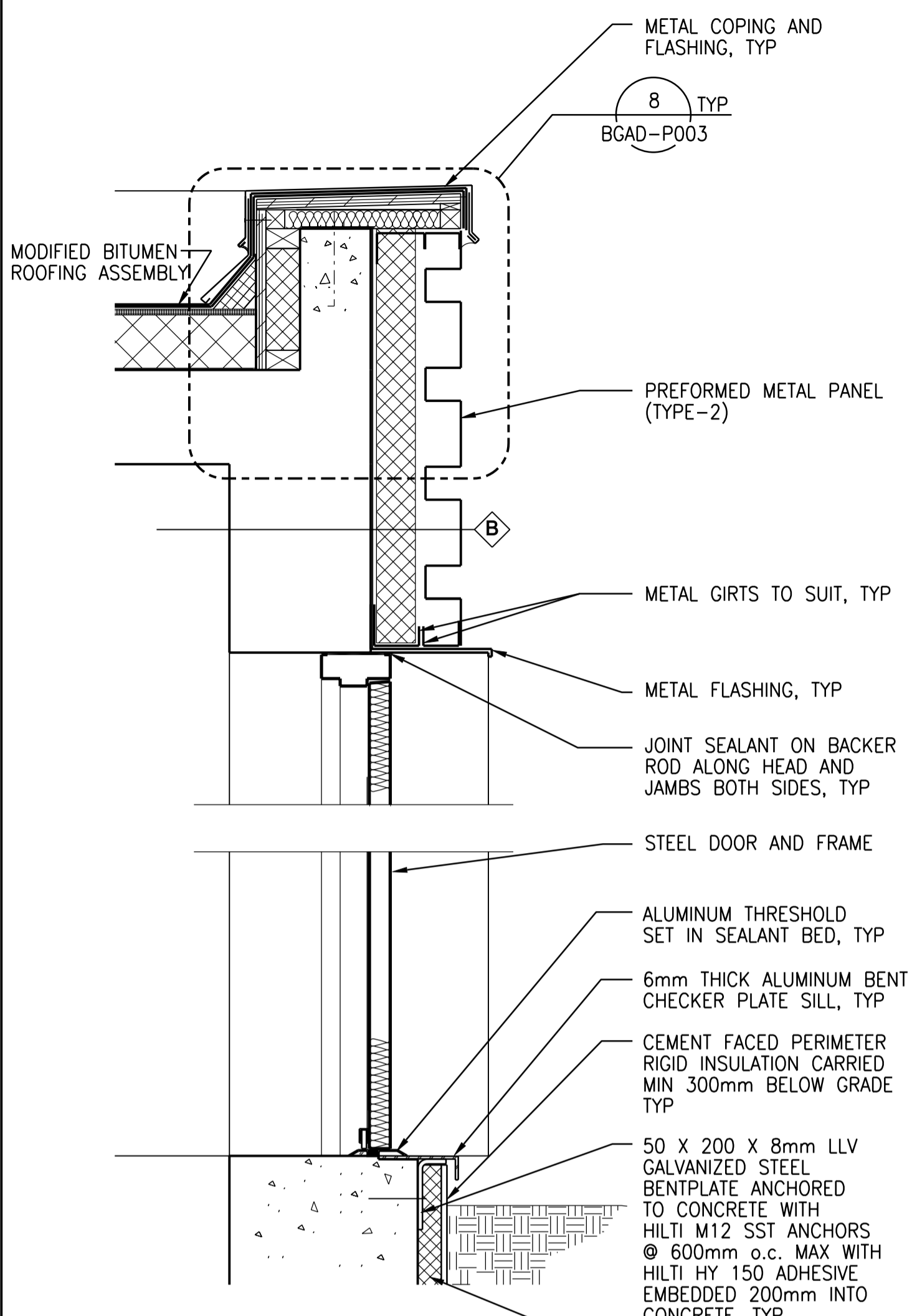
1 SECTION DETAIL  
1:10  
BGAD-P001



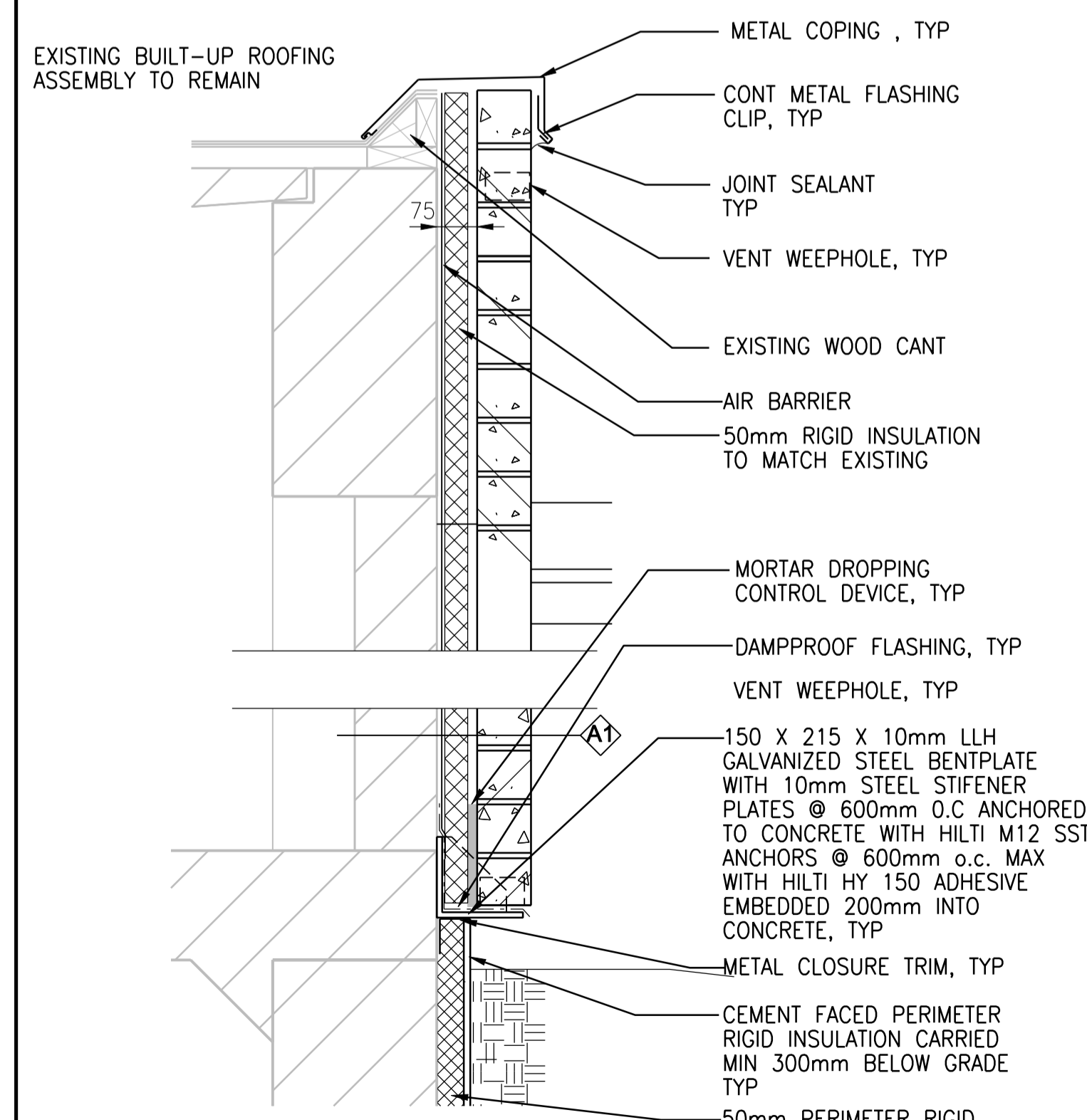
2 SECTION DETAIL  
1:10  
BGAD-P001



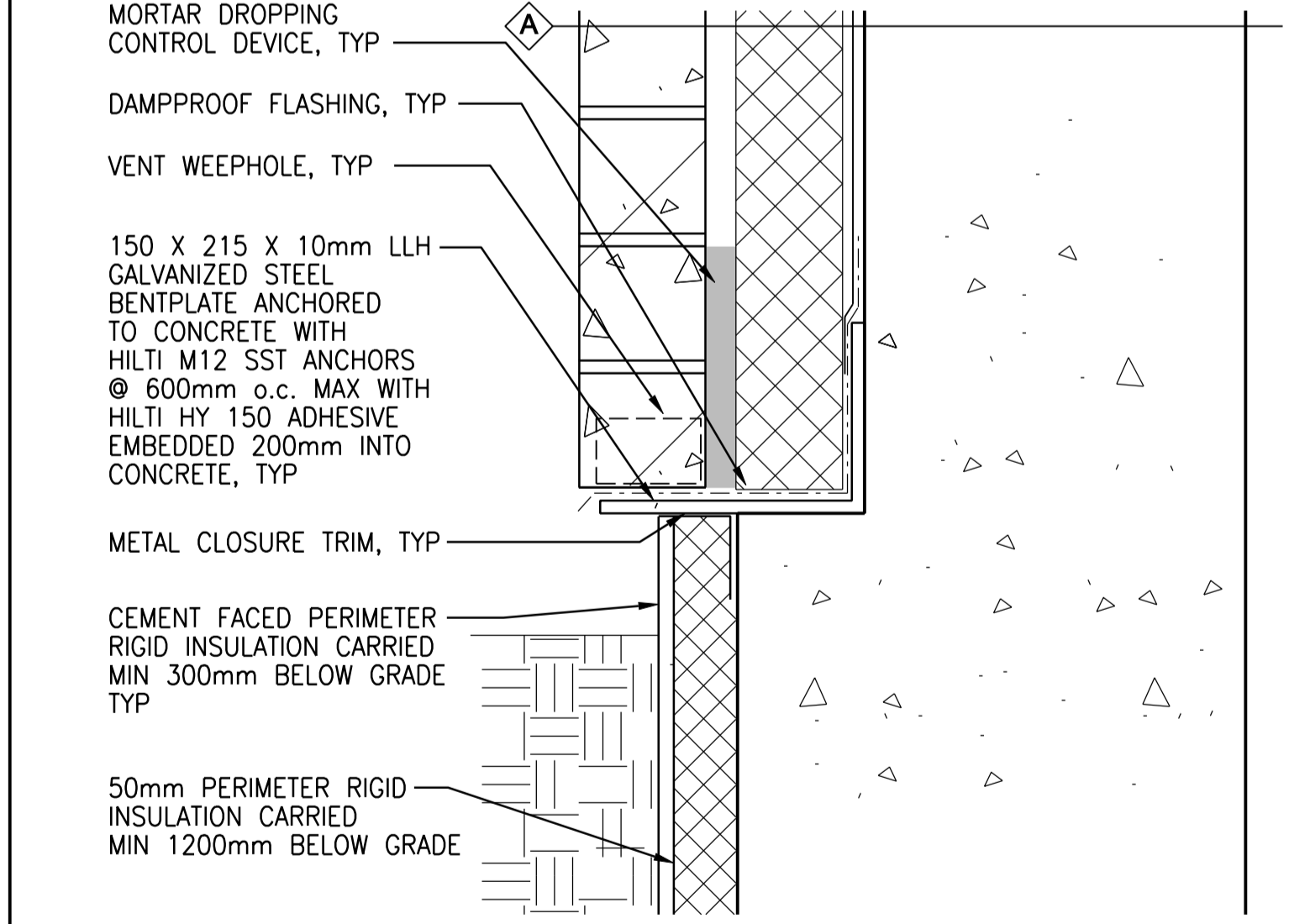
3 SECTION DETAIL  
1:10  
BGAD-P001



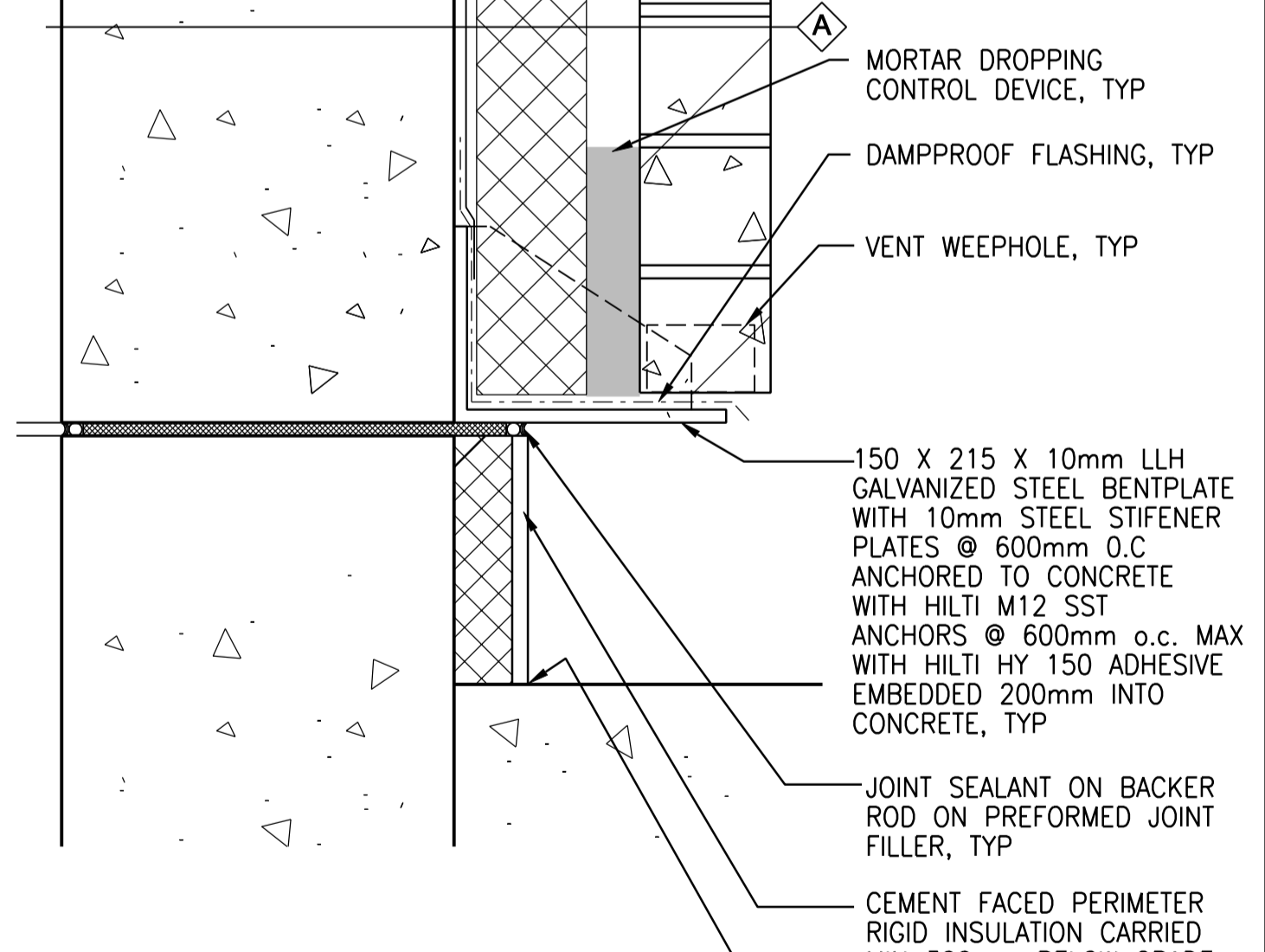
4 SECTION DETAIL  
1:5  
BGAD-P001



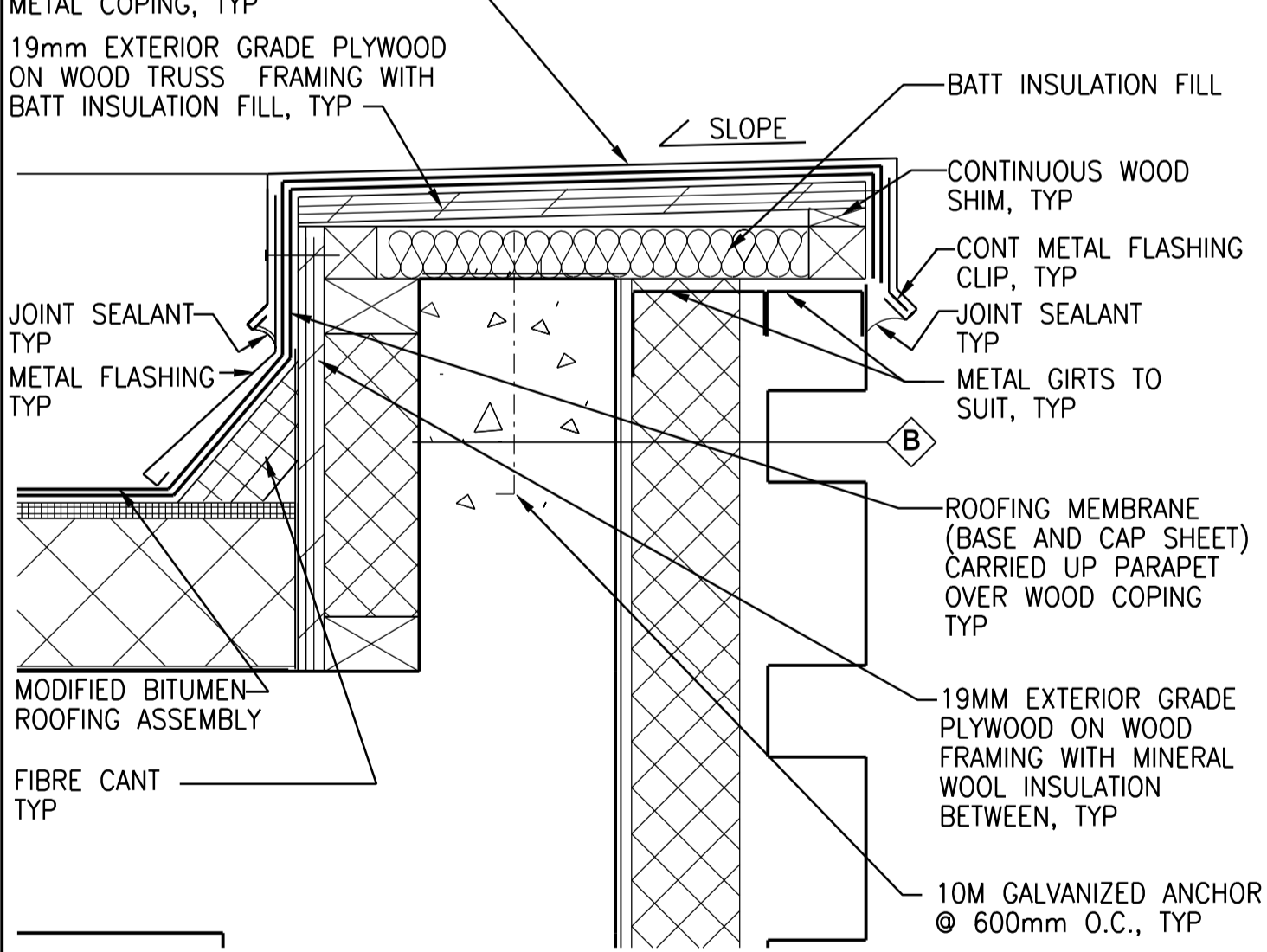
5 SECTION DETAIL  
1:5  
BGAD-P001



6 SECTION DETAIL - TYPICAL BASE  
1:10  
BGAD-P003



7 SECTION DETAIL  
1:10  
BGAD-P003



8 SECTION DETAIL - PARAPET  
1:10  
BGAD-P003

**APEGM**  
Certificate of Authorization  
CH2M HILL Canada Ltd.  
No. 1441

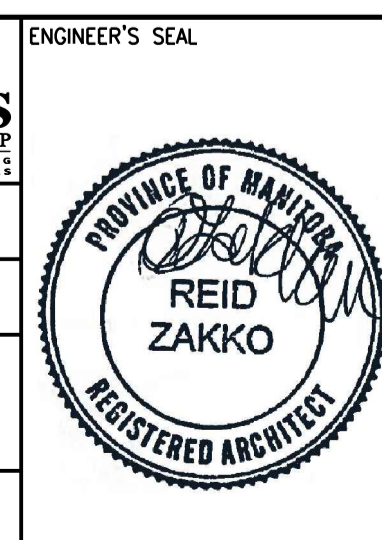
NO.	REVISIONS	DATE	DESIGN	CHECK
00	ISSUED FOR TENDER	08/2015	N.B.	J.C.

**CH2MHILL CANADA**  
Architects Inc.

**SNC-LAVALIN**

DESIGNED BY: R. ZAKKO  
DRAWN BY: J. LIN  
SCALE:  
DATE: 2015/08/13  
CONSULTANT NO.: 474248

CHECKED BY: B. KOLIS-HUPA  
APPROVED BY: R. ZAKKO  
ISSUED FOR CONSTRUCTION BY: T. TURZAK  
DATE: 2015/08/13



**THE CITY OF WINNIPEG**  
WATER AND WASTE DEPARTMENT

**Winnipeg**

SOUTH END WATER POLLUTION CONTROL CENTRE  
SEWPPCC UPGRADING/EXPANSION PROJECT  
BUILDING  
PRIMARY CLARIFIERS  
SECTION DETAILS

CITY DRAWING NUMBER: 1-0102-BGAD-P003  
SHEET: 00  
REV: A1  
SIZE: A1