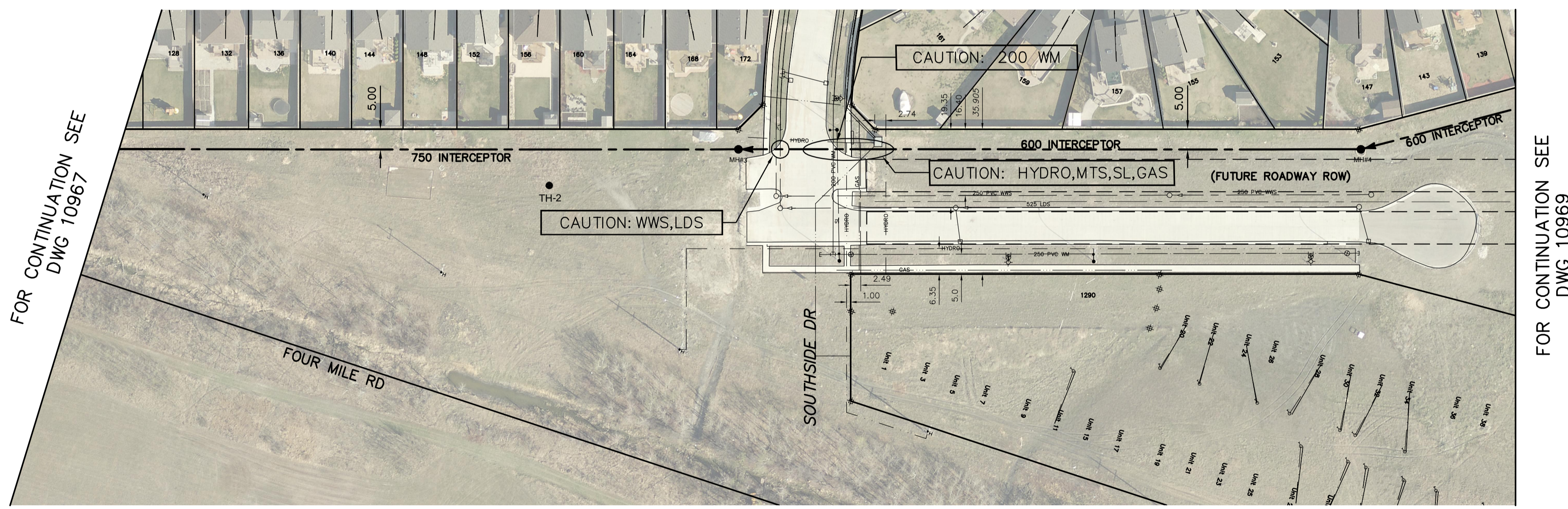


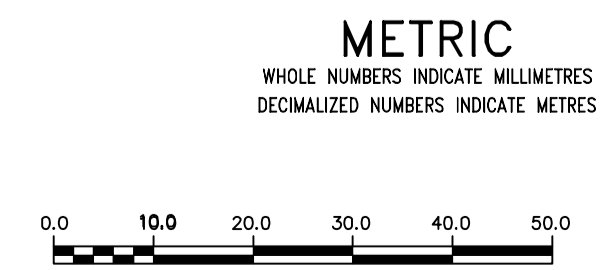
NOTE: CHAINAGES SHOWN ARE ALONG  
 ☉ OF PIPE.

WARDE AVENUE (PROPOSED)



FOR CONTINUATION SEE  
 DWG 10967

FOR CONTINUATION SEE  
 DWG 10969



**WARNING**  
 IF POWER EQUIPMENT OR EXPLOSIVES ARE TO BE USED FOR EXCAVATION ON THIS PROJECT THE CONTRACTOR MUST:  
 1) NOTIFY THE GAS COMPANY OF THE PROPOSED LOCATION OF EXCAVATION.  
 2) TAKE PRECAUTION TO AVOID DAMAGE TO GAS COMPANY INSTALLATIONS.  
 SEE PROVINCIAL REGULATION 21072 FOR DETAILS

**LOCATION APPROVED UNDERGROUND STRUCTURES**  
 SUPV. U/G STRUCTURES COMMITTEE DATE  
 NOTE:  
 LOCATION OF UNDERGROUND STRUCTURES AS SHOWN ARE BASED ON THE BEST INFORMATION AVAILABLE BUT NO GUARANTEE IS GIVEN THAT ALL EXISTING UTILITIES ARE SHOWN OR THAT THE GIVEN LOCATIONS ARE EXACT. CONFIRMATION OF EXISTENCE AND EXACT LOCATION OF ALL UTILITIES MUST BE OBTAINED FROM THE INDIVIDUAL UTILITIES BEFORE PROCEEDING WITH CONSTRUCTION.

B.M.	ELEV.

NO.	REVISIONS	DATE	BY
1	REVISED MISCELLANEOUS TEXT & OBJECTS	15/05/12	RS

DESIGNED BY	DB	CHECKED BY	KZ
DRAWN BY	RS	APPROVED BY	KZ
SCALE:	HORIZONTAL 1:750	RELEASED FOR CONSTRUCTION	DATE
	VERTICAL 1:50		
	DATE 2015 05 12		
PLOT DATE:	2015 05 12		

ENGINEER'S SEAL  
 ORIGINAL SIGNED BY K.R. ZUREK 15/05/12  
 CONSULTANT DRAWING NUMBER

**THE CITY OF WINNIPEG**  
 WATER AND WASTE DEPARTMENT  
 ENGINEERING DIVISION  
 2015 SEWER WORKS  
 CONTRACT NO. 3  
**WARDE AVENUE INTERCEPTOR**  
 223 E OF W R BRIDGETOWN DRIVE  
 164 E OF E R SOUTHSIDE DRIVE

SHEET 3 OF 5  
 CITY DRAWING NUMBER 10969