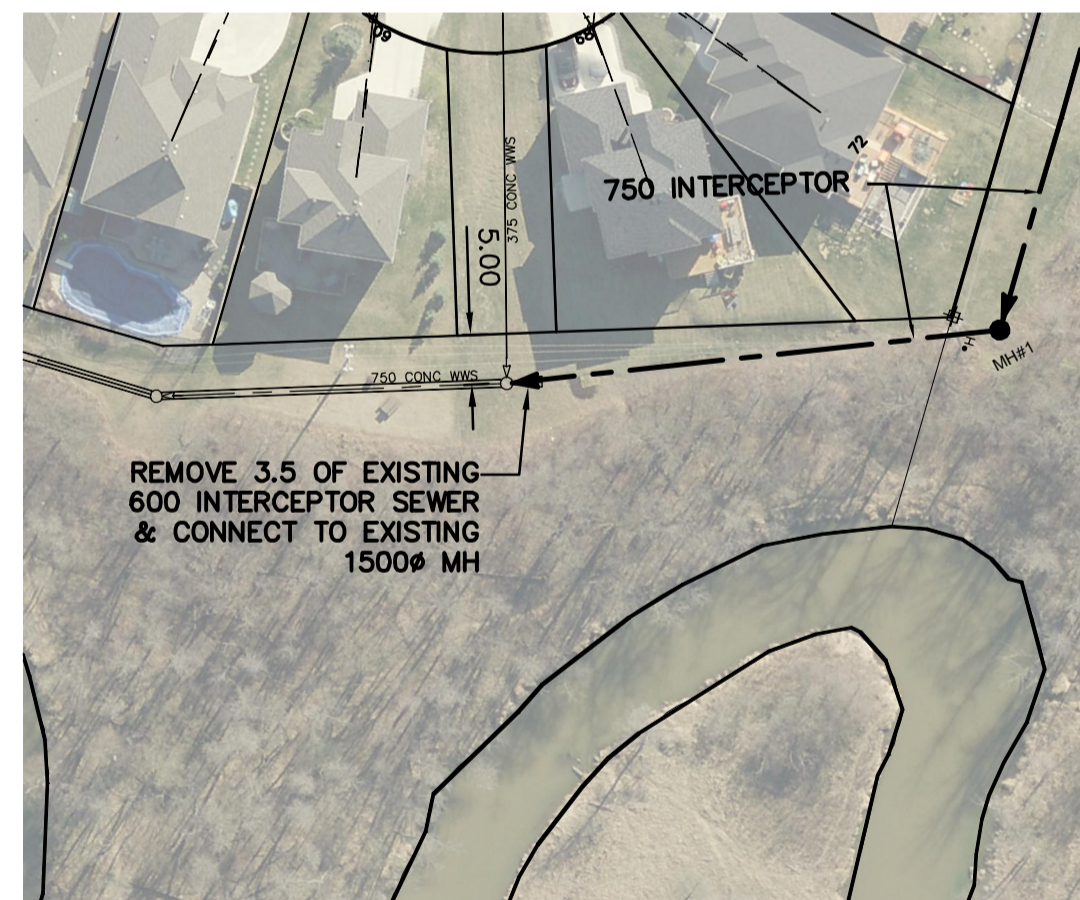
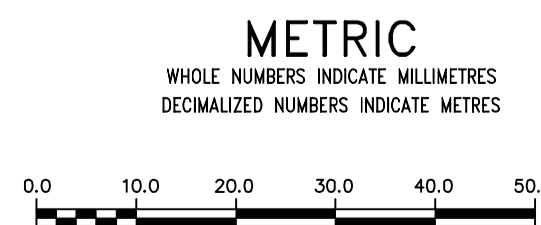


NOTE: CHAINAGES SHOWN ARE ALONG  
 CL OF PIPE.



FOR CONTINUATION SEE  
 DWG 10969



**WARNING**  
 IF POWER EQUIPMENT OR EXPLOSIVES ARE TO BE USED FOR EXCAVATION ON THIS PROJECT THE CONTRACTOR MUST:  
 1) NOTIFY THE GAS COMPANY OF THE PROPOSED LOCATION OF EXCAVATION.  
 2) TAKE PRECAUTION TO AVOID DAMAGE TO GAS COMPANY INSTALLATIONS.  
 SEE PROVINCIAL REGULATION 21072 FOR DETAILS

**LOCATION APPROVED UNDERGROUND STRUCTURES**  
 SUPV. U/G STRUCTURES COMMITTEE DATE  
 NOTE:  
 LOCATION OF UNDERGROUND STRUCTURES AS SHOWN ARE BASED ON THE BEST INFORMATION AVAILABLE BUT NO GUARANTEE IS GIVEN THAT ALL EXISTING UTILITIES ARE SHOWN OR THAT THE GIVEN LOCATIONS ARE EXACT. CONFIRMATION OF EXISTENCE AND EXACT LOCATION OF ALL SERVICES MUST BE OBTAINED FROM THE INDIVIDUAL UTILITIES BEFORE PROCEEDING WITH CONSTRUCTION.

B.M.	ELEV.	DESIGNED BY	CHECKED BY
		DB	KZ
		RS	KZ
NO.	REVISIONS	DATE	BY
1	REVISED MISCELLANEOUS TEXT & OBJECTS	15/05/12	RS

SCALE:	DATE
HORIZONTAL 1: 750 VERTICAL 1: 50	2015 05 12

ENGINEER'S SEAL  
**ORIGINAL SIGNED BY K.R. ZUREK**  
 15/05/12  
 CONSULTANT DRAWING NUMBER

**THE CITY OF WINNIPEG**  
 WATER AND WASTE DEPARTMENT  
 ENGINEERING DIVISION  
 2015 SEWER WORKS  
 CONTRACT NO. 3  
**WARDE AVENUE INTERCEPTOR**  
 45 N OF S R BRIDGETOWN DRIVE TO  
 223 E OF W R BRIDGETOWN DRIVE

SHEET 2 OF 5  
 CITY DRAWING NUMBER 10968

FILE PATH: R:\DRAWINGS\SEWER\2015 RENEWALS\WARDE INTERCEPTOR\  
 FILE NAME: Warde\_Interceptor\_(INTERNAL)\_R2.dwg

BID OPPORTUNITY: 461-2015  
 CONTRACT NUMBER: 3

REVISIONS