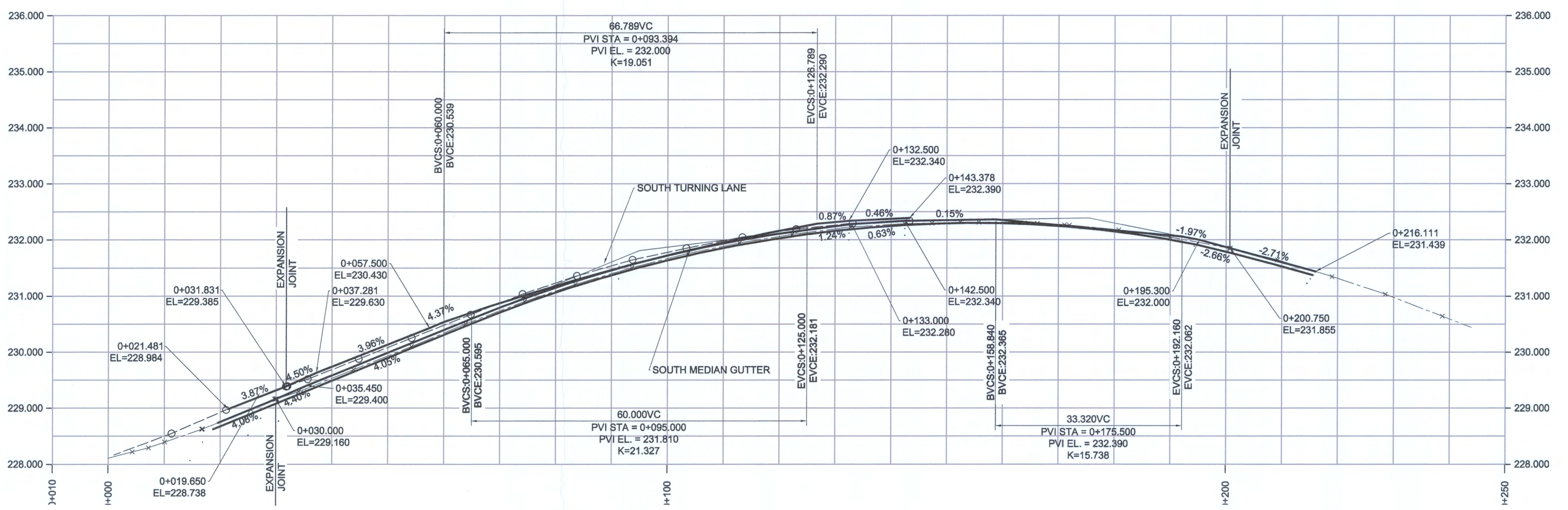


SOUTH INTERMEDIATE LANE



SOUTH MEDIAN GUTTER AND SOUTH TURNING LANE

P:\6033080\6033080-000-WORK\910-CAO\2D-SHEETS\CONTRACT-05.DWG



METRIC
WHOLE NUMBERS INDICATE MILLIMETRES
DECIMALIZED NUMBERS INDICATE METRES

150 mm W.M.		150 mm W.M.		HYDRO		C PROFILE	
◇	WATERMAIN	+	HYDRANT	---	M.T.S.	---	NORTH/WEST GUTTER
⊙	VALVE	⊙	VALVE	---	CONCRETE	---	SOUTHWEST GUTTER
⊙	LAND DRAINAGE SEWER	⊙	LAND DRAINAGE SEWER	---	ASPHALT	---	N/W PROPERTY LINE
⊙	WASTEWATER SEWER	⊙	WASTEWATER SEWER	---	PROPERTY LINE	---	S/E PROPERTY LINE
○	MANHOLE	●	MANHOLE	---	SURVEY BAR	---	
□	CATCH BASIN	■	CATCH BASIN	---	ELEVATION	(35.750)	
▽	CATCH PIT	▽	CATCH PIT	---	TREE	(5000)	
---	JUNCTIONS	---	JUNCTIONS	---	SIDEWALK RAMP	---	
---	CULVERT	---	CULVERT	---	CONCRETE SIDEWALK	---	
---	GAS	---	GAS	---	FENCE	---	
---	EXISTING	---	PROPOSED	---	EXISTING	---	PROPOSED

LOCATION APPROVED UNDERGROUND STRUCTURES

SUPV. U/G STRUCTURES COMMITTEE DATE

NOTE:
LOCATION OF UNDERGROUND STRUCTURES AS SHOWN ARE BASED ON THE BEST INFORMATION AVAILABLE. BUT NO GUARANTEE IS GIVEN THAT ALL EXISTING UTILITIES ARE SHOWN OR THAT THE GIVEN LOCATIONS ARE EXACT. CONFIRMATION OF EXISTENCE AND EXACT LOCATION OF ALL SERVICES MUST BE OBTAINED FROM THE INDIVIDUAL UTILITIES BEFORE PROCEEDING WITH CONSTRUCTION.

B.M. ELEV.	DESCRIPTION
227.848	SOUTH WEST BOLT OF LIGHT STANDARD, EAST OF MAIN STREET AND SOUTH OF RAIL BRIDGE.

AECOM

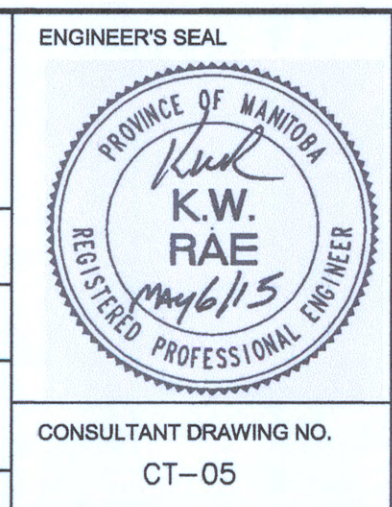
DESIGNED BY: SS
DRAWN BY: SS

CHECKED BY: MM
APPROVED BY: KWR

HOR SCALE: 1:500
VERTICAL: 1:50

RELEASED FOR CONSTRUCTION BY: *[Signature]*

DATE: 2015/03/05



THE CITY OF WINNIPEG
PUBLIC WORKS DEPARTMENT
ENGINEERING DIVISION

NORWOOD NORTHBOUND BRIDGE OVER THE RED RIVER - 2015 DECK REHABILITATION

PAVEMENT PROFILE
2 OF 2

CITY DRAWING NUMBER: B103-15-06
SHEET 05 OF 10

CONSULTANT DRAWING NO. CT-05