

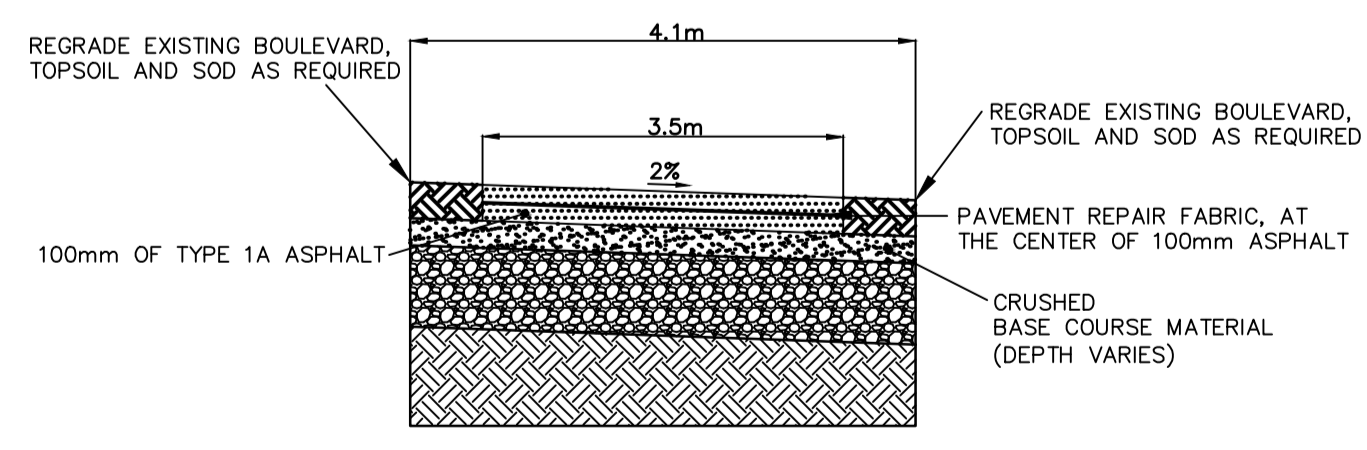
CONSTRUCTION NOTES

- 1) CURB REPLACEMENT AS DIRECTED BY THE CONTRACT ADMINISTRATOR.
- 2) ALL STREET RADIUS CURB UNDER 15M RADIUS SHALL BE REPLACED AS MODIFIED OR AS DIRECTED BY THE CONTRACT ADMINISTRATOR.
- 3) PAVEMENT REPAIRS SHOWN ARE ONLY A REPRESENTATIVE SAMPLE OF THE TENDERED QUANTITIES IN THE FIELD BY THE CONTRACT ADMINISTRATOR.
- 4) ASPHALT TIE-INS ON APPROACHES TO BE DETERMINED IN THE FIELD BY THE CONTRACT ADMINISTRATOR.
- 5) ALL BULLNOSES TO HAVE SLOPED FACE.

WARNING

IF POWER EQUIPMENT OR EXPLOSIVES ARE TO BE USED FOR EXCAVATION ON THIS PROJECT THE CONTRACTOR MUST:
 1) OBTAIN CLEARANCE FROM THE GAS UTILITY PRIOR TO EXCAVATION.
 2) TAKE PRECAUTION TO AVOID DAMAGE TO GAS UTILITY INSTALLATIONS.
 SEE PROVINCIAL REGULATION 210/72 FOR DETAILS

CROSS SECTION OF PROPOSED ASPHALT PEDESTRIAN/CYCLE PATH
N.T.S.



METRIC
 WHOLE NUMBERS INDICATE MILLIMETRES
 DECIMALIZED NUMBERS INDICATE METRES

PRELIMINARY
 NOT TO BE USED FOR CONSTRUCTION

BID OPPORTUNITY NO. 335-2015

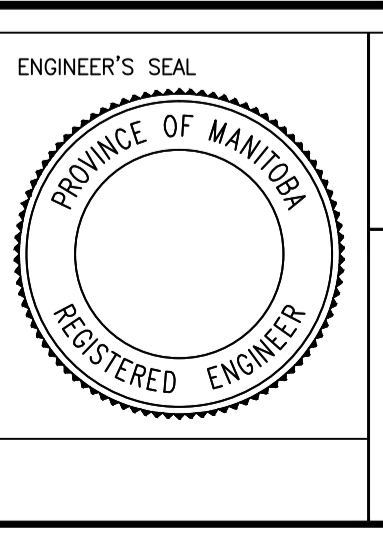
EXISTING	LEGEND - PLAN	PROPOSED	EXISTING	LEGEND - PLAN	PROPOSED	EXISTING	LEGEND - PROFILE	PROPOSED
⊕	HYDRANT	⊕	---	LDS/WWS	---	---	NORTH GUTTER	---
⊙	VALVE	⊙	---	WATERMAIN	---	---	CENTER LINE	---
⊘	CURB STOP	⊘	---	SHAW FIBER OPTIC	---	---	SOUTH GUTTER	---
▭	CONCRETE SIDEWALK	▭	---	TRAFFIC SIGNALS	---			
○	O.L.S.	●		CONCRETE	▨			
○	MANHOLE	●		CURB RENEWAL	▨			
□	CATCH BASIN	●	231.000	ELEVATIONS	[231.000]			
△	CURB INLET	▲		PROPERTY LINE	---			
☆	HYDRO POLE	+		SURVEY BAR	+			
⊙→	TRAFFIC SIGNAL POLE	⊙→		GEODETIC BENCH MARK	+			
				RAMP CURB	---			

LOCATION APPROVED UNDERGROUND STRUCTURES
 SUPR. U/G STRUCTURES COMMITTEE DATE
 NOTE:
 LOCATION OF UNDERGROUND STRUCTURES AS SHOWN ARE BASED ON THE BEST INFORMATION AVAILABLE. BUT NO GUARANTEE IS GIVEN THAT ALL EXISTING UTILITIES ARE SHOWN OR THAT THE GIVEN LOCATIONS ARE EXACT. CONFIRMATION OF EXISTENCE AND EXACT LOCATION OF ALL SERVICES MUST BE OBTAINED FROM THE INDIVIDUAL UTILITIES BEFORE PROCEEDING WITH CONSTRUCTION.

B.M. ELEV.	GBM XX-XXX 2XX.XXX	NO.	REVISIONS	DATE	BY

**ENGINEERING DIVISION
 TECHNOLOGY SERVICES BRANCH
 106 - 1155 PACIFIC AVE**

DESIGNED BY: S.M. CHECKED BY: D.T.
 DRAWN BY: S.M. APPROVED BY:
 HOR. SCALE: 1 : 500
 VERTICAL:
 DATE: 2015/04/08



**THE CITY OF WINNIPEG
 PUBLIC WORKS DEPARTMENT**

DUNKIRK AT PATH
 FROM DUNKIRK/KINGSTON ROW EXIT N/B TO 5 FERMOR AVENUE
 AT PATH REPLACEMENT PROGRAM
 FROM STA. 3+00 TO STA. 6+00

CITY DRAWING NUMBER SE-15-25
 SHEET 2 OF 3
 2