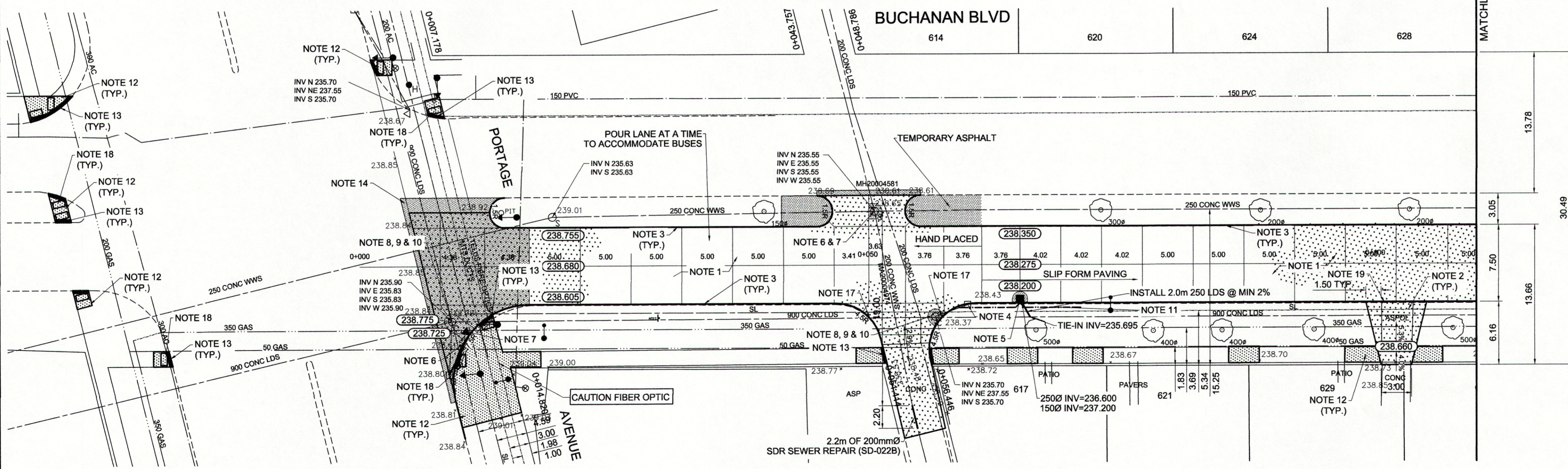


TYPICAL CROSS SECTION



REFERENCE NOTES

- A. PAVEMENT DIMENSIONS ARE TO BACK OF CURB
- B. BASELINE IS CENTRE LINE RIGHT-OF-WAY
- C. PROPERTY LINES OBTAINED FROM CITY OF WINNIPEG L.B.I.S., AND NO SCALE FACTOR WAS APPLIED
- D. REFER TO AECOM FIELD BOOK NO. 4846

CONSTRUCTION NOTES

1. REMOVE EXISTING CONCRETE PAVEMENT AND CONSTRUCT NEW 200mm REINFORCED CONCRETE PAVEMENT
2. REMOVE EXISTING CONCRETE PAVEMENT AND CONSTRUCT NEW 150mm REINFORCED CONCRETE PAVEMENT
3. CONSTRUCT NEW BARRIER CURB (180mm HT. SEPARATE)
4. REMOVE EXISTING CATCHBASIN AND PLUG EXISTING LEAD
5. INSTALL NEW CURB AND GUTTER INLET c/w CATCH BASIN (SD-024) AND CONNECT NEW 250mm LEAD TO EXISTING 900 CONCRETE LDS
6. REMOVE EXISTING CATCHPIT AND CURB AND GUTTER INLET AND PLUG EXISTING LEAD
7. INSTALL NEW CURB AND GUTTER INLET c/w CATCH PIT (SD-023) AND CONNECT TO EXISTING CATCHBASIN
8. REMOVE EXISTING FRAME AND COVER AND PLACE NEW FRAME AND SOLID COVER (AP-004/AP-005)
9. ADJUST EXISTING MANHOLE TO GRADE
10. INSTALL NEW CAST IRON RING
11. INSTALL 150mm SUBDRAIN 6m ON EACH SIDE OF CATCHBASIN
12. RENEW EXISTING 100mm CONCRETE SIDEWALK
13. INSTALL NEW CURB RAMP (10mm HT. INTEGRAL)
14. REMOVE EXISTING ASPHALTIC PAVEMENT AND CONSTRUCT NEW ASPHALTIC PAVEMENT TYPE 1A
15. ADJUST EXISTING WATER VALVE TO GRADE
16. ADJUST EXISTING CURB STOP TO GRADE
17. CONSTRUCT NEW MODIFIED BARRIER CURB (180mm HT. INTEGRAL)
18. INSTALL DETECTABLE WARNING SURFACE TILE
19. CONSTRUCT NEW LIP CURB (40mm HT. INTEGRAL)



METRIC
WHOLE NUMBERS INDICATE MILLIMETRES
DECIMALIZED NUMBERS INDICATE METRES

150 mm W.W.M.	WATERMAIN	150 mm W.W.M.	HYDRO	— x —	— x —	— x —	— x —
⊕	HYDRANT	⊕	M.T.S.	— □ —	— □ —	— □ —	— □ —
⊙	VALVE	⊙	CONCRETE	— ▨ —	— ▨ —	— ▨ —	— ▨ —
300mm L.D.S.	LAND DRAINAGE SEWER	300mm L.D.S.	ASPHALT	— ▨ —	— ▨ —	— ▨ —	— ▨ —
250mm W.W.S.	WASTEWATER SEWER	250mm W.W.S.	PROPERTY LINE	— — — —	— — — —	— — — —	— — — —
○	MANHOLE	○	SURVEY BAR	— ⊕ —	— ⊕ —	— ⊕ —	— ⊕ —
□	CATCH BASIN	□	ELEVATION	(35.750)	(35.750)	(35.750)	(35.750)
▽	CATCH PIT	▽	TREE	— ⊙ —	— ⊙ —	— ⊙ —	— ⊙ —
— — — —	JUNCTIONS	— — — —	SIDEWALK RAMP	— ▨ —	— ▨ —	— ▨ —	— ▨ —
— — — —	CULVERT	— — — —	CONCRETE SIDEWALK	— ▨ —	— ▨ —	— ▨ —	— ▨ —
— — — —	GAS	— — — —	FENCE	— ▨ —	— ▨ —	— ▨ —	— ▨ —
— — — —	EXISTING	— — — —	LEGEND - PLAN	— — — —	— — — —	— — — —	— — — —
— — — —	LEGEND - PLAN	— — — —	LEGEND - PLAN	— — — —	— — — —	— — — —	— — — —
— — — —	PROPOSED	— — — —	PROPOSED	— — — —	— — — —	— — — —	— — — —
— — — —	EXISTING	— — — —	EXISTING	— — — —	— — — —	— — — —	— — — —
— — — —	LEGEND - PROFILE	— — — —	LEGEND - PROFILE	— — — —	— — — —	— — — —	— — — —
— — — —	PROPOSED	— — — —	PROPOSED	— — — —	— — — —	— — — —	— — — —
— — — —	EXISTING	— — — —	EXISTING	— — — —	— — — —	— — — —	— — — —

LOCATION APPROVED UNDERGROUND STRUCTURES

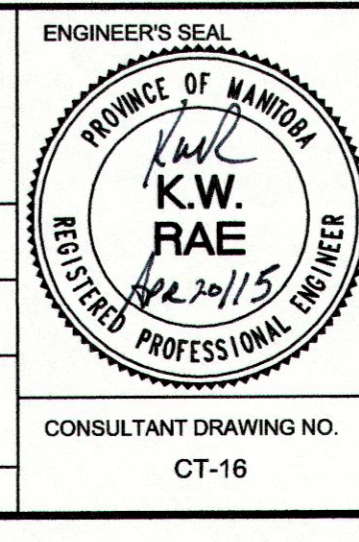
SUPV. U/G STRUCTURES COMMITTEE DATE

NOTE:
LOCATION OF UNDERGROUND STRUCTURES AS SHOWN ARE BASED ON THE BEST INFORMATION AVAILABLE. BUT NO GUARANTEE IS GIVEN THAT ALL EXISTING UTILITIES ARE SHOWN OR THAT THE GIVEN LOCATIONS ARE EXACT. CONFIRMATION OF EXISTENCE AND EXACT LOCATION OF ALL SERVICES MUST BE OBTAINED FROM THE INDIVIDUAL UTILITIES BEFORE PROCEEDING WITH CONSTRUCTION.

B.M. 14 - 35
ELEV. 239.659

N.W. Cor. Buchanan Blvd. & Fairlane Ave.,
Tilt on top of 0.05 m dia. x 2.4 m
iron pipe on W.L.

DESIGNED BY	BC/SS	CHECKED BY	KWR
DRAWN BY	PB/RT	APPROVED BY	[Signature]
HOR. SCALE:	1:250	PREPARED FOR CONSTRUCTION BY	[Signature]
VERTICAL:	1:10	DATE	APRIL 21, 2015
DATE	APRIL 21, 2015	DATE	



THE CITY OF WINNIPEG
PUBLIC WORKS DEPARTMENT
ENGINEERING DIVISION

2015 LOCAL STREET RENEWAL PROGRAM

BUCHANAN Blvd. - PORTAGE AVENUE TO LIVINIA AVENUE
CONCRETE RECONSTRUCTION
PORTAGE AVENUE TO STATION 0+110

CITY DRAWING NUMBER
SHEET 16 OF 20

CONSULTANT DRAWING NO. CT-16