

- REFERENCE NOTES**
- A. PAVEMENT DIMENSIONS ARE TO BACK OF CURB
 - B. BASELINE IS CENTRE LINE RIGHT-OF-WAY
 - C. PROPERTY LINES OBTAINED FROM CITY OF WINNIPEG L.B.I.S., AND NO SCALE FACTOR WAS APPLIED
 - D. REFER TO AECOM FIELD BOOK NO. 4850

- CONSTRUCTION NOTES**
1. PLACE NEW TYPE 1A ASPHALTIC PAVEMENT (85mm AVG)
 2. REMOVE EXISTING CONCRETE PAVEMENT AND CONSTRUCT NEW 150mm REINFORCED CONCRETE PAVEMENT
 3. REMOVE EXISTING MOUNTABLE CURB
 4. CONSTRUCT BARRIER CURB (100mm REVEAL HT, SEPERATE)
 5. CONSTRUCT BARRIER CURB (100mm REVEAL HT, DOWELLED)
 6. CONSTRUCT NEW RAMP CURB (10mm REVEAL HT, INTEGRAL)
 7. RENEW EXISTING 100mm CONCRETE SIDEWALK
 8. ADJUST EXISTING WATER VALVE TO GRADE
 9. ADJUST EXISTING MANHOLE/CATCH BASIN TO GRADE
 10. REMOVE EXISTING FRAME AND COVER AND PLACE NEW FRAME AND COVER (AP-004/AP-005)
 11. INSTALL NEW CAST IRON RISER RING



METRIC
WHOLE NUMBERS INDICATE MILLIMETRES
DECIMALIZED NUMBERS INDICATE METRES

EXISTING	LEGEND - PLAN	PROPOSED	EXISTING	LEGEND - PLAN	PROPOSED	EXISTING	LEGEND - PROFILE	PROPOSED
150 mm W.M.	WATERMAIN	150 mm W.M.	---	HYDRO	---	---	CH PROFILE	---
300mm L.D.S.	LAND DRAINAGE SEWER	300mm L.D.S.	---	CONCRETE	---	---	NORTH/WEST GUTTER	---
250mm W.W.S.	WASTEWATER SEWER	250mm W.W.S.	---	ASPHALT	---	---	SOUTH/EAST GUTTER	---
○	MANHOLE	●	---	PROPERTY LINE	---	---	N/W PROPERTY LINE	---
□	CATCH BASIN	■	---	SURVEY BAR	---	---	S/E PROPERTY LINE	---
▽	CATCH PIT	▽	---	ELEVATION	(35.750)	---		
+	JUNCTIONS	+	---	TREE	---	---		
---	CULVERT	---	---	SIDEWALK RAMP	---	---		
---	GAS	---	---	CONCRETE SIDEWALK	---	---		
---		---	---	FENCE	---	---		

LOCATION APPROVED UNDERGROUND STRUCTURES

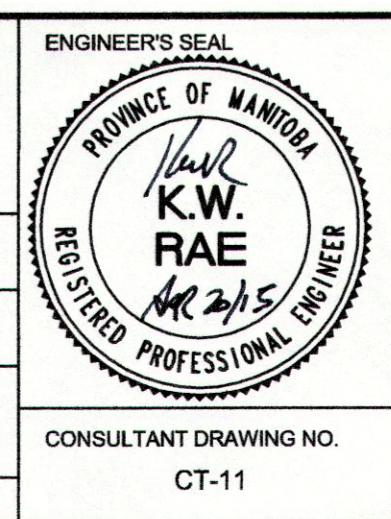
SUPV. U/G STRUCTURES COMMITTEE DATE

NOTE:
LOCATION OF UNDERGROUND STRUCTURES AS SHOWN ARE BASED ON THE BEST INFORMATION AVAILABLE. BUT NO GUARANTEE IS GIVEN THAT ALL EXISTING UTILITIES ARE SHOWN OR THAT THE GIVEN LOCATIONS ARE EXACT. CONFIRMATION OF EXISTENCE AND EXACT LOCATION OF ALL SERVICES MUST BE OBTAINED FROM THE INDIVIDUAL UTILITIES BEFORE PROCEEDING WITH CONSTRUCTION.

B.M. 14 - 25 S. side Athlone Dr. @ Prairie View Rd., Tbl. in N. Conc. foundation of Athlone School, 43.5m E. & 0.2 m below brick of N.W. Cor. of school.

ELEV. 240.636

DESIGNED BY	BC/SS	CHECKED BY	KWR
DRAWN BY	PB/RT	APPROVED BY	1/2
HOR. SCALE:	1:250	RELEASED FOR CONSTRUCTION BY:	
VERTICAL:	1:10	DATE	APR 22/15
0	ISSUED FOR TENDER	04/21/2015	BC
A	ISSUED FOR REVIEW	04/14/2015	BC
NO.	REVISIONS	DATE	BY



THE CITY OF WINNIPEG
PUBLIC WORKS DEPARTMENT
ENGINEERING DIVISION

2015 LOCAL STREET RENEWAL PROGRAM

ATHLONE DRIVE - RONALD STREET TO PRAIRIE VIEW ROAD
PAVEMENT REHABILITATION
STATION 0+500 TO STATION 0+620

CITY DRAWING NUMBER
SHEET 11 OF 20

CONSULTANT DRAWING NO. CT-11