

REFERENCE NOTES

- A. PAVEMENT DIMENSIONS ARE TO BACK OF CURB
- B. BASELINE IS CENTRE LINE RIGHT-OF-WAY
- C. PROPERTY LINES OBTAINED FROM CITY OF WINNIPEG L.B.I.S., AND NO SCALE FACTOR WAS APPLIED
- D. REFER TO AECOM FIELD BOOK NO. 4844

CONSTRUCTION NOTES

- 1. PLACE NEW TYPE 1A ASPHALTIC PAVEMENT (85mm AVG)
- 2. REMOVE EXISTING CONCRETE PAVEMENT AND CONSTRUCT NEW 150mm REINFORCED CONCRETE PAVEMENT c/w 85mm AVG. TYPE 1A ASPHALTIC PAVEMENT
- 3. REMOVE EXISTING CONCRETE PAVEMENT AND CONSTRUCT NEW 150mm REINFORCED CONCRETE PAVEMENT
- 4. CONSTRUCT NEW RAMP CURB (10mm REVEAL HT, INTEGRAL)
- 5. RENEW BARRIER CURB (100mm REVEAL HT, DOWELLED)
- 6. INSTALL NEW CURB AND GUTTER INLET c/w CATCH PIT (SD-023) AND CONNECT TO EXISTING CATCH BASIN
- 7. CONSTRUCT NEW MODIFIED BARRIER CURB (100mm REVEAL HT, INTEGRAL)
- 8. RENEW EXISTING 100mm CONCRETE SIDEWALK
- 9. ADJUST EXISTING WATER VALVE TO GRADE
- 10. CONSTRUCT BARRIER CURB (100mm REVEAL HT, SEPARATE.)



METRIC

WHOLE NUMBERS INDICATE MILLIMETRES
DECIMALIZED NUMBERS INDICATE METRES

150 mm W.M.		300mm L.D.S.		250mm W.W.S.		HYDRO		C PROFILE	
	WATERMAIN		LAND DRAINAGE SEWER		WASTEWATER SEWER		M.T.S.		NORTH/WEST GUTTER
	VALVE		CATCH BASIN		CATCH PIT		PROPERTY LINE		SURVEY BAR
	MANHOLE		JUNCTIONS		CULVERT		TREE		SIDEWALK RAMP
	GAS		CONCRETE SIDEWALK		FENCE		ELEVATION (35.750)		NW PROPERTY LINE
	EXISTING		PROPOSED		EXISTING		PROPOSED		EXISTING
	LEGEND - PLAN		LEGEND - PLAN		LEGEND - PROFILE		LEGEND - PROFILE		PROPOSED

LOCATION APPROVED UNDERGROUND STRUCTURES

SUPV. U/G STRUCTURES COMMITTEE DATE

NOTE:
LOCATION OF UNDERGROUND STRUCTURES AS SHOWN ARE BASED ON THE BEST INFORMATION AVAILABLE. BUT NO GUARANTEE IS GIVEN THAT ALL EXISTING UTILITIES ARE SHOWN OR THAT THE GIVEN LOCATIONS ARE EXACT. CONFIRMATION OF EXISTENCE AND EXACT LOCATION OF ALL SERVICES MUST BE OBTAINED FROM THE INDIVIDUAL UTILITIES BEFORE PROCEEDING WITH CONSTRUCTION.

NO.	REVISIONS	DATE	BY
0	ISSUED FOR TENDER	04/21/2015	BC
A	ISSUED FOR REVIEW	04/14/2015	BC

AECOM

DESIGNED BY: BC/SS CHECKED BY: KWR

DRAWN BY: PB/RT APPROVED BY: [Signature]

FOR RELEASED FOR CONSTRUCTION BY: [Signature]

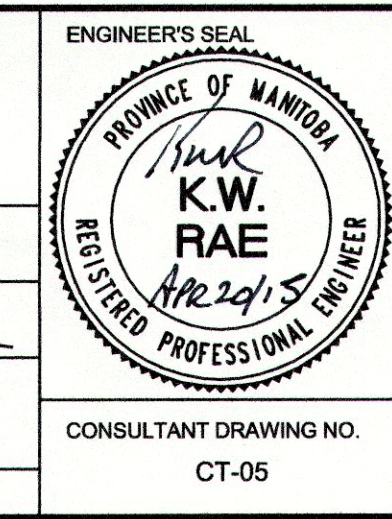
APR 20 2015

DESIGNED BY: BC/SS CHECKED BY: KWR

DRAWN BY: PB/RT APPROVED BY: [Signature]

FOR RELEASED FOR CONSTRUCTION BY: [Signature]

APR 20 2015



THE CITY OF WINNIPEG
PUBLIC WORKS DEPARTMENT
ENGINEERING DIVISION

2015 LOCAL STREET RENEWAL PROGRAM

DOHANEY CRESCENT: ACHESON DRIVE TO HAMILTON AVENUE
PAVEMENT REHABILITATION
STATION 0+100 TO STATION 0+220

CITY DRAWING NUMBER: SHEET 05 OF 20

CONSULTANT DRAWING NO. CT-05