

PRELIMINARY
NOT TO BE USED FOR CONSTRUCTION

- CONSTRUCTION NOTES**
- 1) CURB REPLACEMENT AS DIRECTED BY THE CONTRACT ADMINISTRATOR.
 - 2) ALL STREET RADIUS CURB UNDER 15M RADIUS SHALL BE REPLACED AS MODIFIED OR AS DIRECTED BY THE CONTRACT ADMINISTRATOR.

WARNING

IF POWER EQUIPMENT OR EXPLOSIVES ARE TO BE USED FOR EXCAVATION ON THIS PROJECT THE CONTRACTOR MUST:

- 1) OBTAIN CLEARANCE FROM THE GAS UTILITY PRIOR TO EXCAVATION.
- 2) TAKE PRECAUTION TO AVOID DAMAGE TO GAS UTILITY INSTALLATIONS.

SEE PROVINCIAL REGULATION 210/72 FOR DETAILS

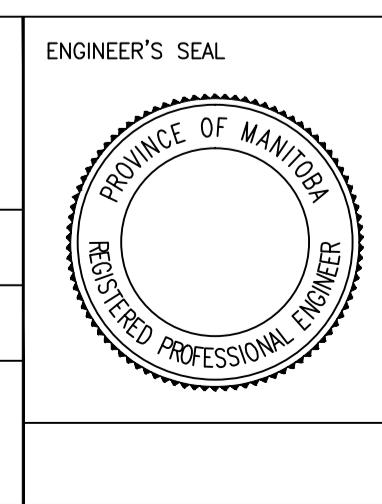
METRIC
WHOLE NUMBERS INDICATE MILLIMETRES
DECIMALIZED NUMBERS INDICATE METRES

BID OPPORTUNITY NO. 3-2015

EXISTING	LEGEND - PLAN	PROPOSED	EXISTING	LEGEND - PLAN	PROPOSED	EXISTING	LEGEND - PROFILE	PROPOSED
⊕	HYDRANT	⬤	---	LDS/WWS	---	---	EAST GUTTER	---
⊗	VALVE	⬤	---	WATERMAIN	---	---	CENTER LINE	---
⊙	CURB STOP	⬤	---	GAS	---	---	WEST GUTTER	---
---	ASPHALT	---	---	MTS	---	---	EAST PROPERTY LINE	---
○	O.L.S.	⬤	---	TERASPAN	---	---	WEST PROPERTY LINE	---
○	MANHOLE	⬤	---	PTDFOC	---	---	WATER SERVICE	---
□	CATCH BASIN	⬤	---	SHAW	---	---	GEODETTIC BENCH MARK	---
△	CURB INLET	⬤	---	CURB RENEWAL	---	---	PROPERTY LINE	---
☆	HYDRO POLE	⬤	---	RAMP CURB	---	---	ELEVATIONS	[231.000]
+	CONCRETE	---	---	TREE	---	---		
+	SURVEY BAR	---	---		---	---		

LOCATION APPROVED UNDERGROUND STRUCTURES	B.M. ELEV.	IB @ N.W. LYON AND RIVERWOOD
SUPR. U/G STRUCTURES COMMITTEE DATE		231.600
NOTE:		
LOCATION OF UNDERGROUND STRUCTURES AS SHOWN ARE BASED ON THE BEST INFORMATION AVAILABLE. BUT NO GUARANTEE IS GIVEN THAT ALL EXISTING UTILITIES ARE SHOWN OR THAT THE GIVEN LOCATIONS ARE EXACT. CONFIRMATION OF EXISTENCE AND EXACT LOCATION OF ALL SERVICES MUST BE OBTAINED FROM THE INDIVIDUAL UTILITIES BEFORE PROCEEDING WITH CONSTRUCTION.		
ISSUED FOR TENDER	03/24/2014	R.C.
NO. REVISIONS	DATE	BY

ENGINEERING DIVISION TECHNOLOGY SERVICES BRANCH 106 - 1155 PACIFIC AVE	
DESIGNED BY D.K.	CHECKED BY R.W./D.T.
DRAWN BY D.K.	APPROVED BY R.T.C.
HOR. SCALE: 1 : 250 VERTICAL: 1 : 10	
DATE 2015/03/24	



THE CITY OF WINNIPEG
PUBLIC WORKS DEPARTMENT

LYON STREET
FROM OAKENWALD AVENUE TO POINT ROAD
ASPHALT RECONSTRUCTION AND ASSOCIATED WORKS
FROM STA. 2+50 TO STA. 3+25

CITY DRAWING NUMBER SE-15-14
SHEET 14 OF 14

2