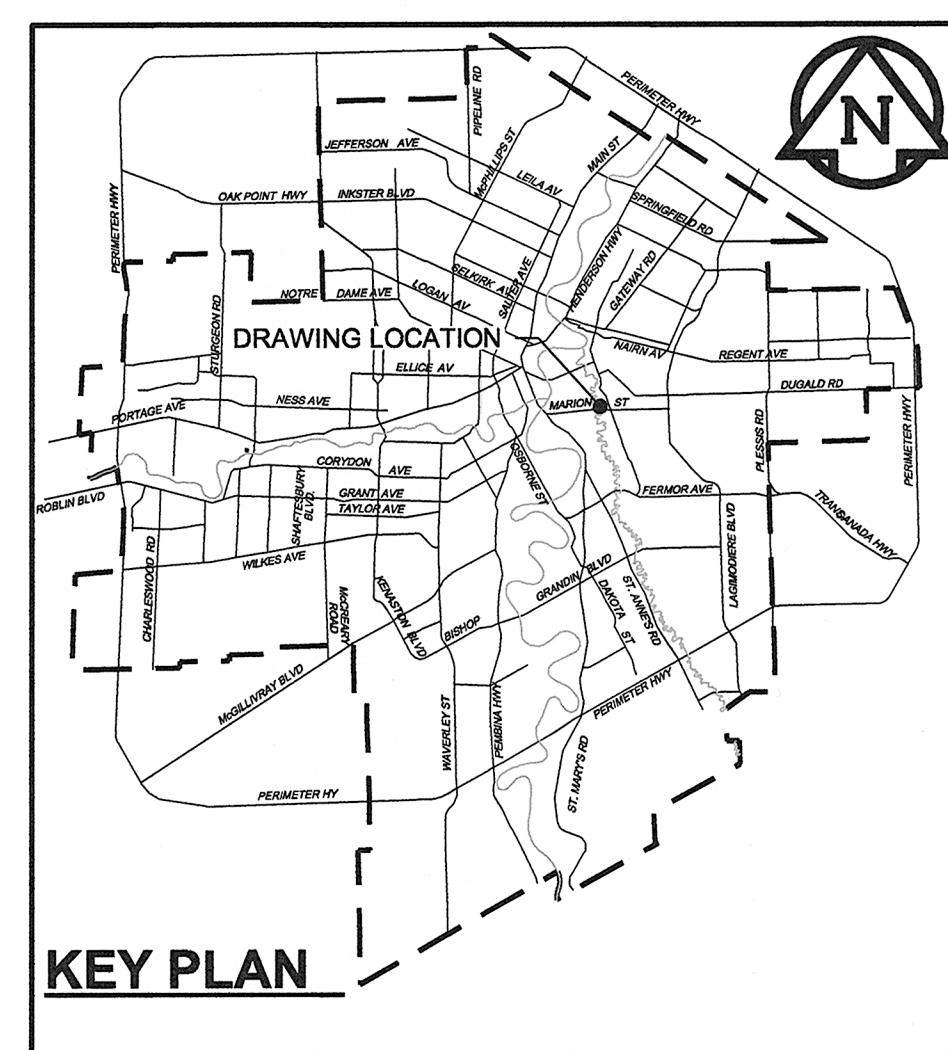
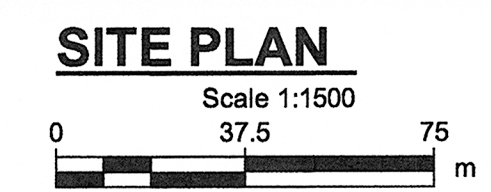
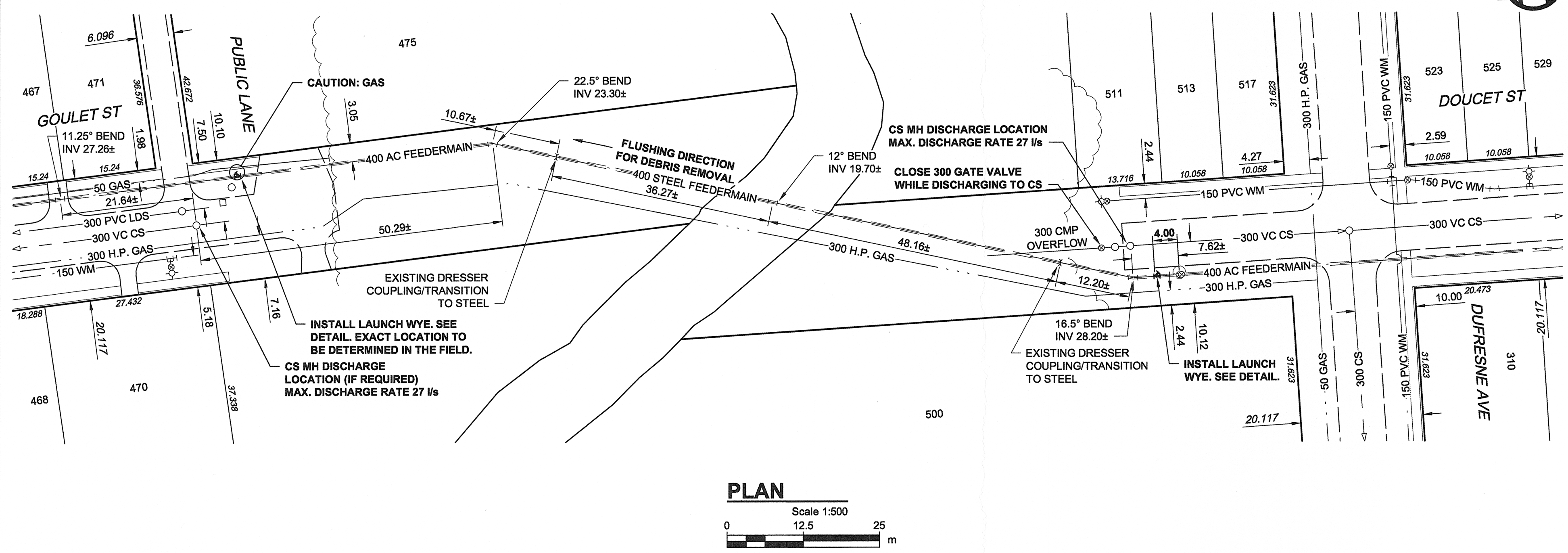
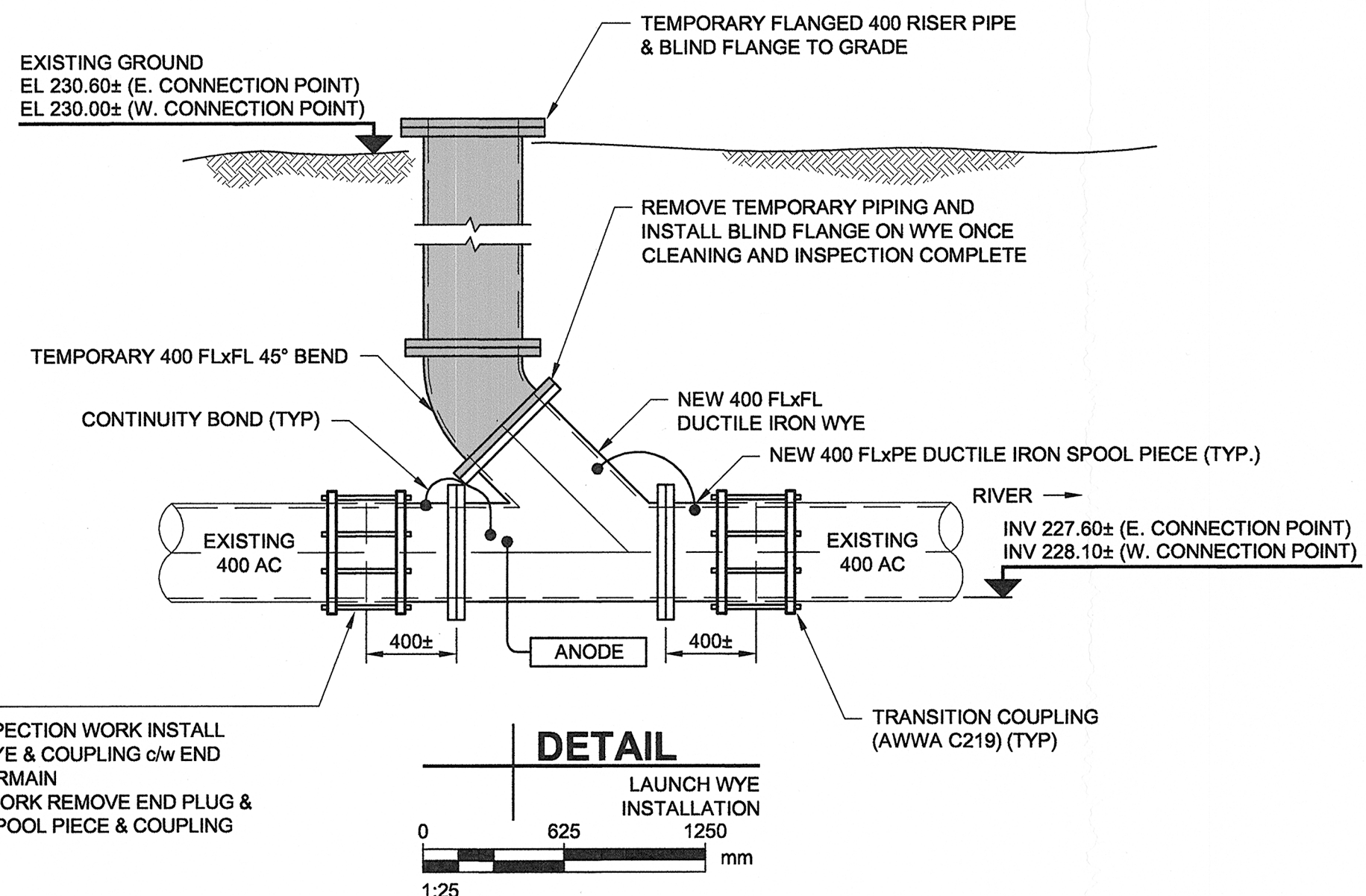


D SIZE 22" x 34" (560mm x 864mm)

PLOT: 95/2015 11:56:32 AM

AECOM FILE NAME: 60270487-SHT-30-0000-C-1002.dwg Saved By: denouderw



NOTES:

SEQUENCE OF WORK:

1. LOCATE PIPE, CONFIRM MATERIAL AND OUTSIDE DIAMETER.
2. ISOLATE CROSSING PIPE (BY CITY).
3. INSTALL 400 FLANGED DUCTILE IRON WYE (SEE DETAIL THIS DRAWING).
4. INSTALL TEMPORARY BEND AND PIPE TO ALLOW FOR LAUNCH OF CLEANING PIGS AND INSPECTION TOOLS.
5. COMPLETE CLEANING, INSPECTION, AND DISINFECTION OF WATERMAIN.
6. REMOVE TEMPORARY PIPING AND INSTALL BLIND FLANGE ON WYE.
7. BACKFILL AND RESTORE SITE.

CONSTRUCTION NOTES:

1. SEE DRAWING FOR CLEANING AND FLUSHING WATER DISCHARGE MANHOLE LOCATIONS.
2. RESTORE BOULEVARDS, SIDEWALKS AND ROADWAYS DAMAGED DURING CONSTRUCTION.
3. ENSURE PIPELINE IS NOT DEWATERED DURING CLEANING AND INSPECTION WORK.

WARNING
IF POWER EQUIPMENT OR EXPLOSIVES ARE TO BE USED FOR EXCAVATION ON THIS PROJECT, THE CONTRACTOR MUST:
1) NOTIFY THE GAS COMPANY OF THE PROPOSED LOCATION OF EXCAVATION.
2) TAKE PRECAUTION TO AVOID DAMAGE TO GAS COMPANY INSTALLATIONS.
SEE PROVINCIAL REGULATION 140/92 FOR DETAILS

METRIC
WHOLE NUMBERS INDICATE MILLIMETRES
DECIMALIZED NUMBERS INDICATE METRES

AECOM
Certificate of Authorization
AECOM Canada Ltd.
No. 4671 Date: May 5, 2015

BID OPPORTUNITY NO. 289-2015

150 WM	WATERMAIN	150 WM	+	150 WM	WATERMAIN	150 WM	+
300 LDS	LAND DRAINAGE SEWER	300 LDS	X	300 LDS	LAND DRAINAGE SEWER	300 LDS	X
250 WWS	WASTE WATER SEWER	250 WWS	⊖	250 WWS	WASTE WATER SEWER	250 WWS	⊖
○	MANHOLE	●	MTS	○	MANHOLE	●	MTS
□	CATCH BASIN	■	GAS	□	CATCH BASIN	■	GAS
△	CURB INLET	▲	TESTHOLE	△	CURB INLET	▲	TESTHOLE
▭	CULVERT	▭	LAMP STANDARD	▭	CULVERT	▭	LAMP STANDARD
—	PIPE ABANDONMENTS	—	TREE	—	PIPE ABANDONMENTS	—	TREE
+	SURVEY BAR	+		+	SURVEY BAR	+	
EXISTING	LEGEND - PLAN	NEW	EXISTING	LEGEND - PROFILE	NEW	EXISTING	LEGEND - PROFILE

LOCATION APPROVED
UNDERGROUND STRUCTURES

SUPR. U/G STRUCTURES	DATE

NOTE:
LOCATION OF UNDERGROUND STRUCTURES AS SHOWN ARE BASED ON THE BEST INFORMATION AVAILABLE. BUT NO GUARANTEE IS GIVEN THAT ALL EXISTING UTILITIES ARE SHOWN OR THAT THE GIVEN LOCATIONS ARE EXACT. CONFIRMATION OF EXISTENCE AND EXACT LOCATION OF ALL SERVICES MUST BE OBTAINED FROM THE INDIVIDUAL UTILITIES BEFORE PROCEEDING WITH CONSTRUCTION.

NO.	REVISIONS	BY	DATE
1	ADDED TEMPORARY PLUG	WJd	15/05/05
0	ISSUED FOR CONSTRUCTION	ADL	15/04/16

AECOM

DESIGNED BY	ADB	CHECKED BY	[Signature]
DRAWN BY	ADL	APPROVED BY	[Signature]
HOR. SCALE	AS NOTED	RELEASED FOR CONSTRUCTION	A. Delaurier
VERT. SCALE	N/A	DATE	May 1, 2015

PROFESSIONAL'S SEAL
PROVINCE OF MANITOBA
A.D. BRAUN
Member
24453
May 5/15
REGISTERED PROFESSIONAL ENGINEER

THE CITY OF WINNIPEG
WATER AND WASTE DEPARTMENT

PROVISION OF PIPELINE ACCESS MODIFICATIONS, CLEANING AND SUPPORT SERVICES FOR WATERMAIN RIVER CROSSING INSPECTIONS

SITE 10
GOULET - DOUCET WATERMAIN

SHEET 2 OF 4
CITY DRAWING NUMBER
D-13302
REV 1