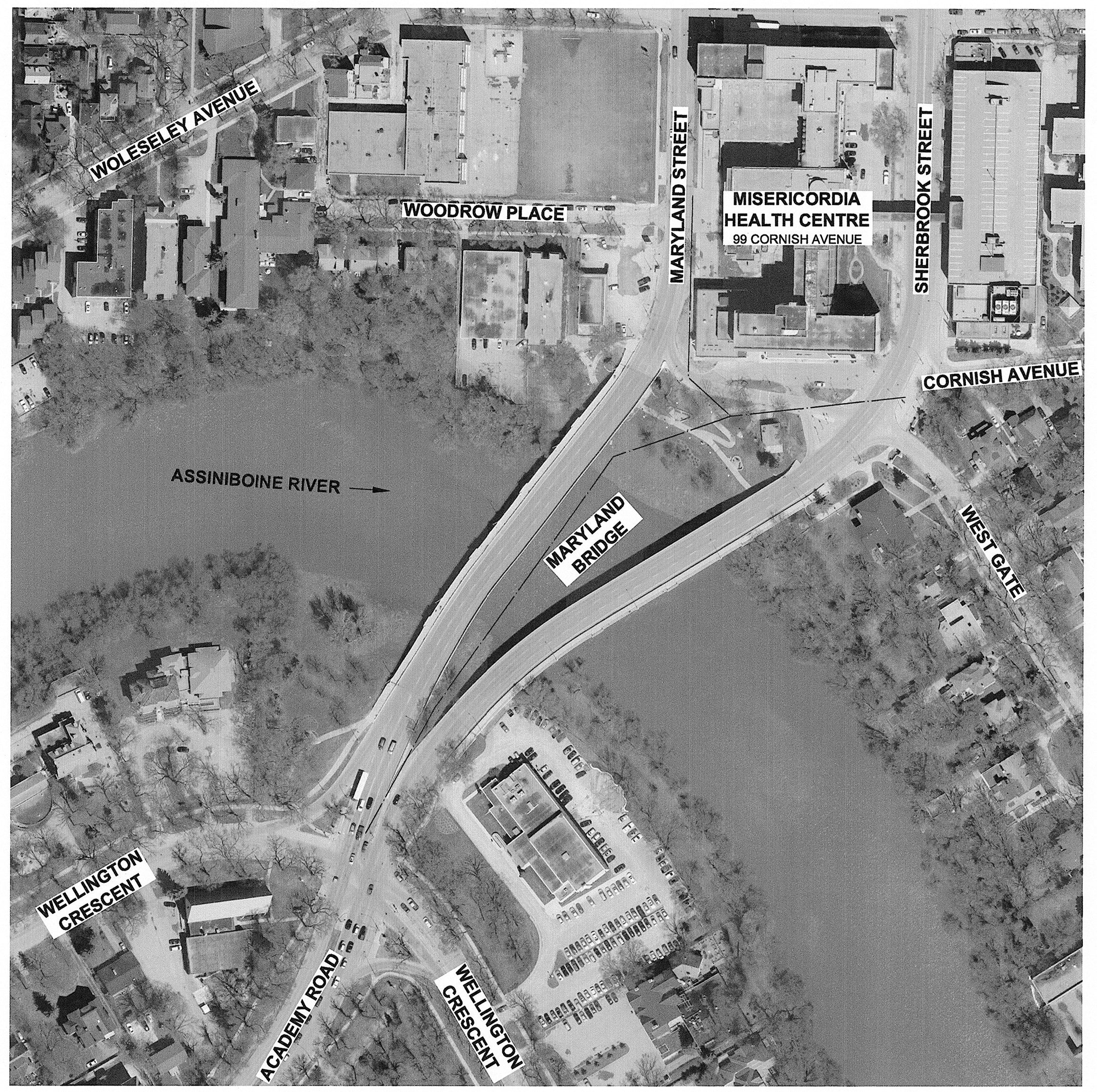
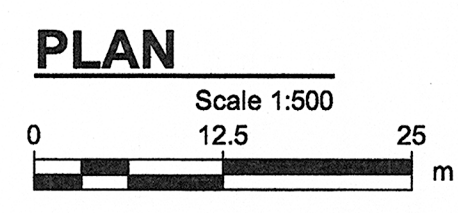
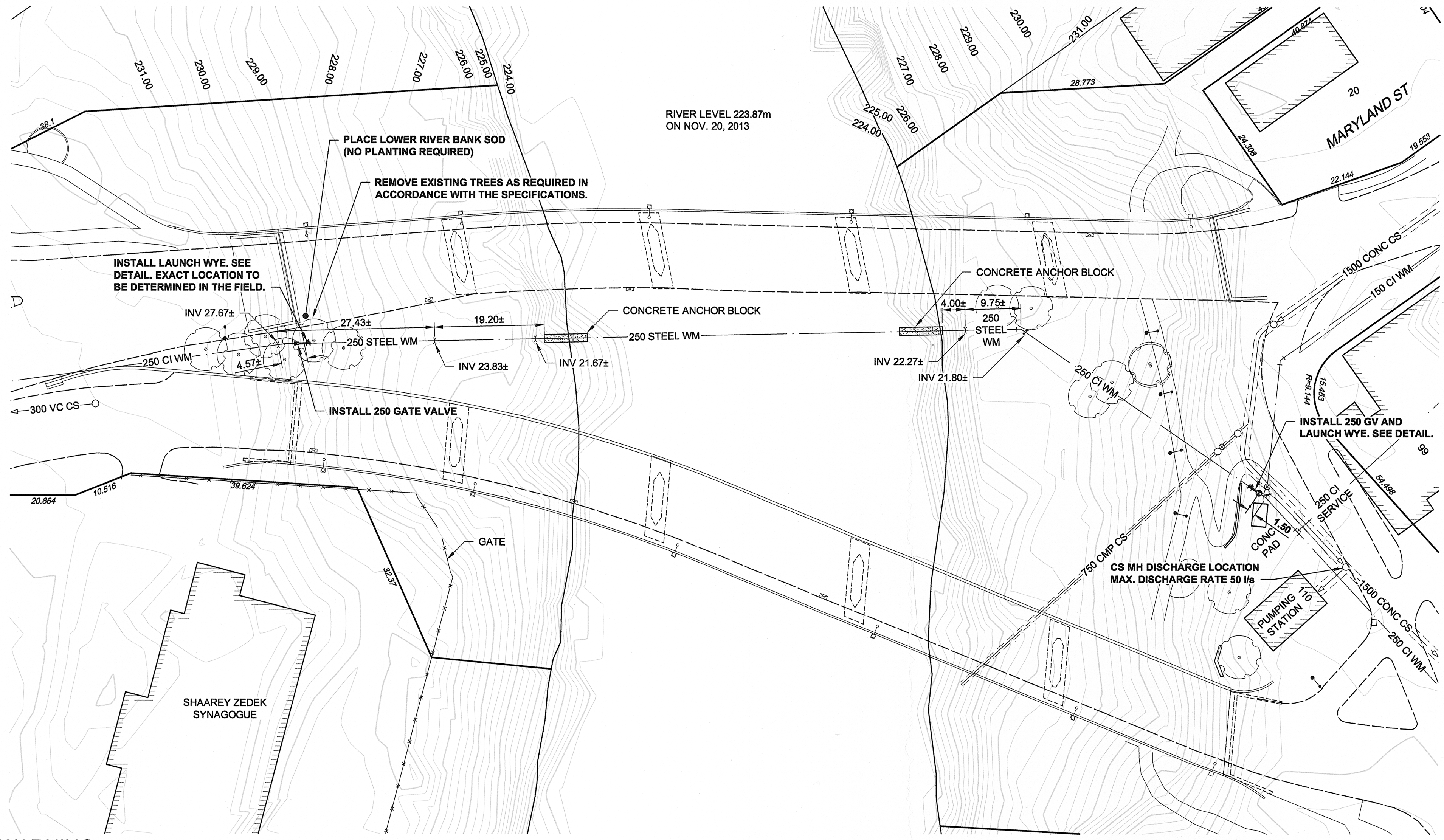
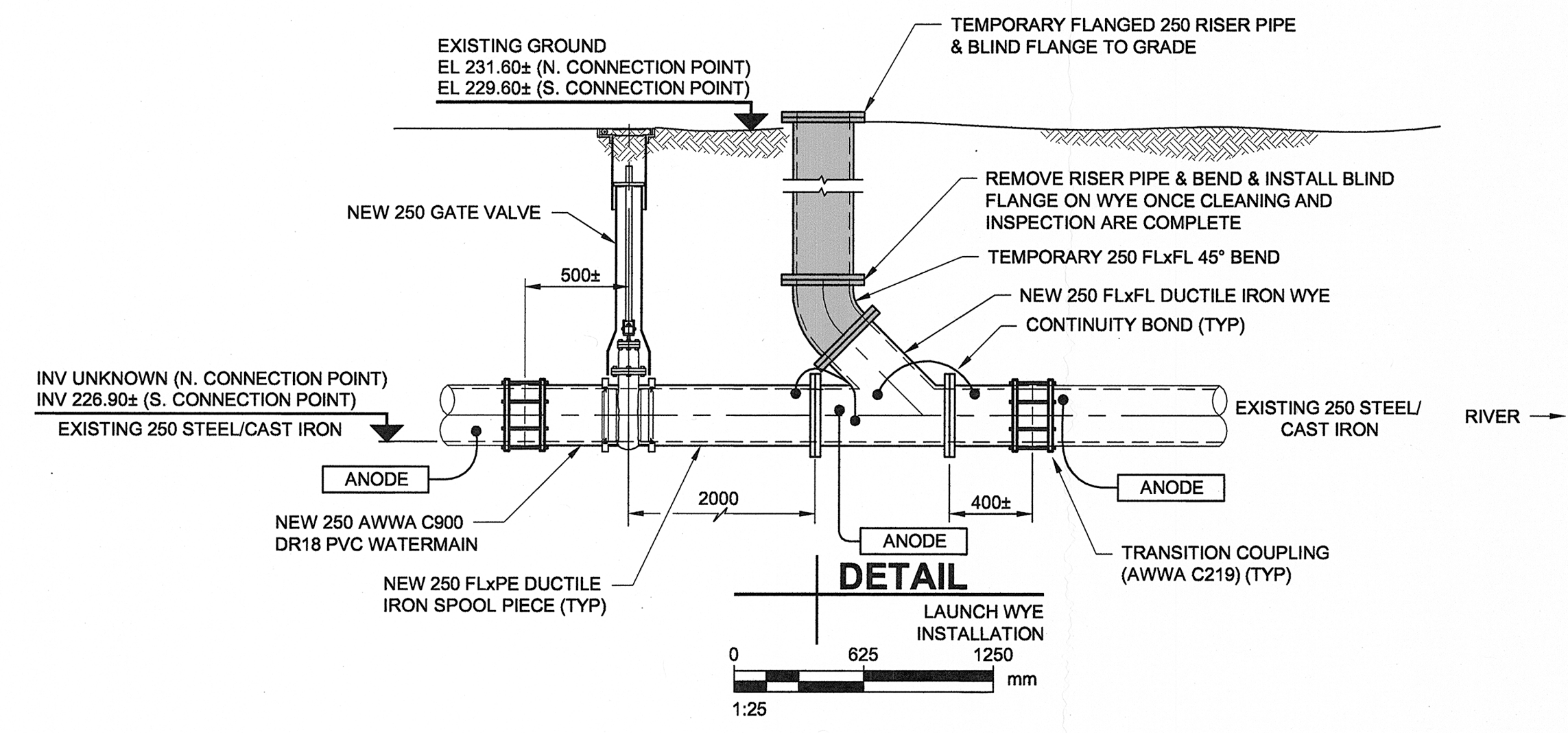


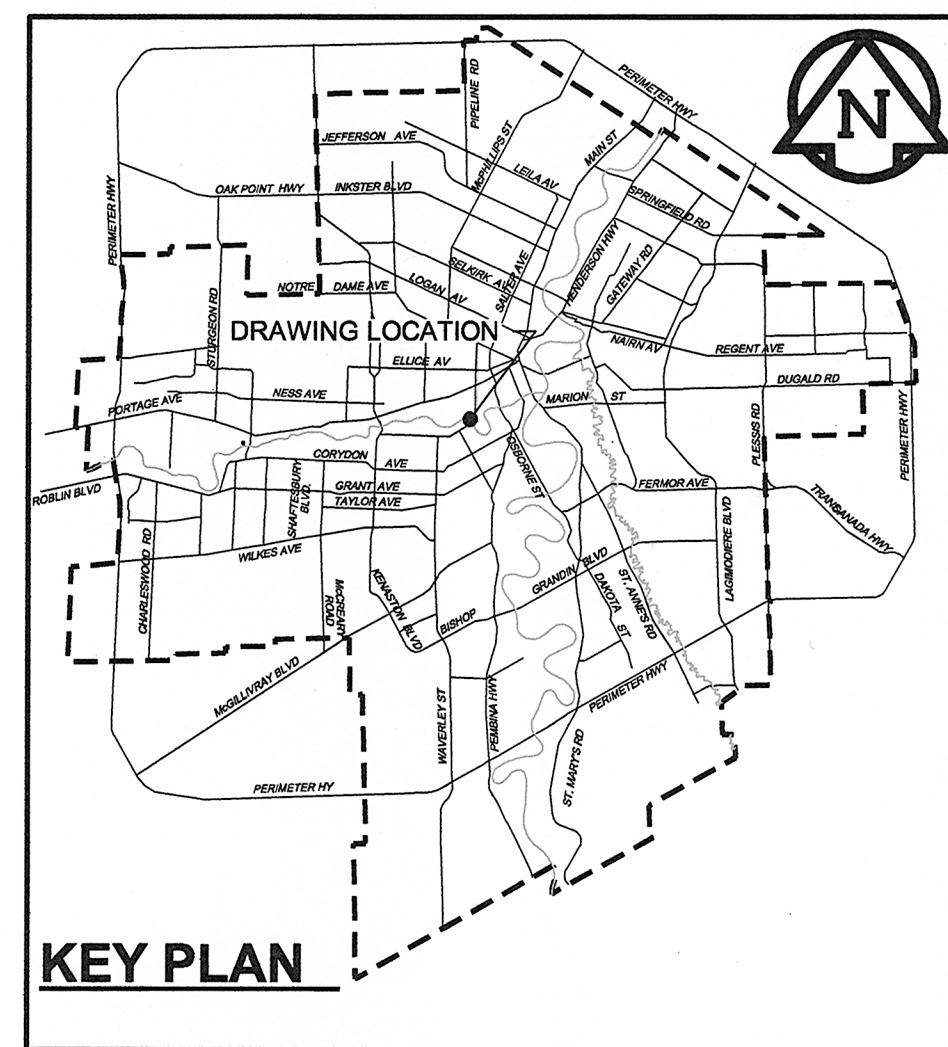
D SIZE 22" x 34" (559mm x 864mm)

PLOT: 5/22/2015 10:08:56 AM

AECOM FILE NAME: 60270487-SHT-30-0000-C-1003.dwg Saved By: denoude@winnipeg.ca



- NOTES:**
- SEQUENCE OF WORK:**
1. LOCATE PIPE, CONFIRM MATERIAL AND OUTSIDE DIAMETER.
  2. DEPTH OF 250 WM OFF CORNISH AVENUE UNKNOWN.
  3. ISOLATE CROSSING PIPE (BY CITY).
  4. INSTALL 250 FLANGED DUCTILE IRON WYE (SEE DETAIL THIS DRAWING).
  5. INSTALL TEMPORARY BEND AND PIPE TO ALLOW FOR LAUNCH OF CLEANING PIGS AND INSPECTION TOOLS.
  6. COMPLETE CLEANING, INSPECTION, AND DISINFECTION OF WATERMAIN.
  7. REMOVE TEMPORARY PIPING AND INSTALL BLIND FLANGE ON WYE.
  8. BACKFILL AND RESTORE SITE.
- CONSTRUCTION NOTES:**
1. MINIMUM FLUSHING FLOW RATE OF 37 l/s BASED ON MINIMUM FLUSHING VELOCITY OF 0.76 m/s.
  2. SEE DRAWING FOR CLEANING AND FLUSHING WATER DISCHARGE MANHOLE LOCATIONS.
  3. MAINTAIN 1 LANE OF TRAFFIC ON CORNISH AVENUE AT ALL TIMES.
  4. ACCESS SOUTH BANK OF RIVER THRU PARKING LOT OF SHARREY ZEDEK SYNAGOGUE.
  5. RESTORE BOULEVARDS, SIDEWALKS AND ROADWAYS DAMAGED DURING CONSTRUCTION.
  6. ENSURE PIPELINE IS NOT DEWATERED DURING CLEANING AND INSPECTION WORK.



**WARNING**  
IF POWER EQUIPMENT OR EXPLOSIVES ARE TO BE USED FOR EXCAVATION ON THIS PROJECT, THE CONTRACTOR MUST:  
1) NOTIFY THE GAS COMPANY OF THE PROPOSED LOCATION OF EXCAVATION.  
2) TAKE PRECAUTION TO AVOID DAMAGE TO GAS COMPANY INSTALLATIONS.  
SEE PROVINCIAL REGULATION 140/92 FOR DETAILS.



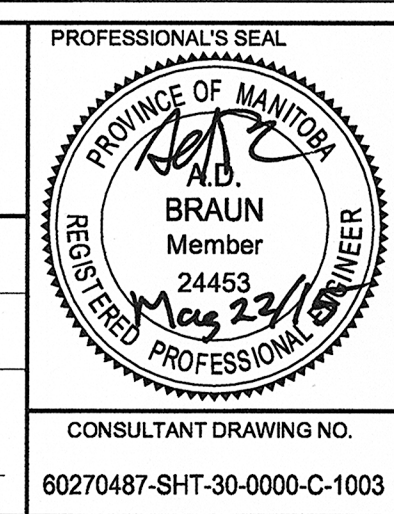
BID OPPORTUNITY NO. 289-2015

| 150 WM | WATERMAIN           | 150 WM | CURB STOP     | 150 WM | WATERMAIN           | 150 WM | LOCATION APPROVED  |
|--------|---------------------|--------|---------------|--------|---------------------|--------|--|
| ○      | HYDRANT             | ○      | REDUCER       | ○      | HYDRANT             | ○      | UNDERGROUND STRUCTURES   |
| ○      | VALVE               | ○      | COUPLING      | ○      | VALVE               | ○      | SUPR. U/G STRUCTURES DATE COMMITTEE  |
| ○      | LAND DRAINAGE SEWER | ○      | ANODE         | ○      | LAND DRAINAGE SEWER | ○      | NOTE:  |
| ○      | WASTE WATER SEWER   | ○      | HYDRO         | ○      | WASTE WATER SEWER   | ○      | LOCATION OF UNDERGROUND STRUCTURES AS SHOWN ARE BASED ON THE BEST INFORMATION AVAILABLE, BUT NO GUARANTEE IS GIVEN THAT ALL EXISTING UTILITIES ARE SHOWN OR THAT THE GIVEN LOCATIONS ARE EXACT. CONFIRMATION OF EXISTENCE AND EXACT LOCATION OF ALL SERVICES MUST BE OBTAINED FROM THE INDIVIDUAL UTILITIES BEFORE PROCEEDING WITH CONSTRUCTION. |
| ○      | MANHOLE             | ○      | MTS           | ○      | PAVEMENT CROWN      | ○      |  |
| ○      | CATCH BASIN         | ○      | GAS           | ○      | N/W PROPERTY LINE   | ○      |  |
| ○      | CURB INLET          | ○      | TESTHOLE      | ○      | S/E PROPERTY LINE   | ○      |  |
| ○      | CULVERT             | ○      | LAMP STANDARD | ○      | N/W GUTTER          | ○      |  |
| ○      | PIPE ABANDONMENTS   | ○      | TREE          | ○      | S/E GUTTER          | ○      |  |
| ○      | SURVEY BAR          | ○      |               | ○      |                     | ○      |  |
| ○      | EXISTING            | ○      | LEGEND - PLAN | ○      | LEGEND - PROFILE    | ○      |  |
| ○      | NEW                 | ○      |               | ○      |                     | ○      |  |

| NO. | REVISIONS               | YY/MM/DD | BY  |
|-----|-------------------------|----------|-----|
| 2   | REVISED NOTE            | 15/05/22 | WJd |
| 1   | ADDED 250 GATE VALVE    | 15/05/05 | WJd |
| 0   | ISSUED FOR CONSTRUCTION | 15/04/18 | ADL |

**AECOM**

DESIGNED BY: ADB  
CHECKED BY: [Signature]  
DRAWN BY: ADL  
APPROVED BY: [Signature]  
HOR. SCALE: AS NOTED  
VERT. SCALE: N/A  
RELEASED FOR CONSTRUCTION: [Signature]  
DATE: May 1, 2015  
A. Delaurier



**THE CITY OF WINNIPEG WATER AND WASTE DEPARTMENT**

PROVISION OF PIPELINE ACCESS MODIFICATIONS, CLEANING AND SUPPORT SERVICES FOR WATERMAIN RIVER CROSSING INSPECTIONS

SITE 12  
MARYLAND BRIDGE WATERMAIN

SHEET 3 OF 4  
CITY DRAWING NUMBER: D-13303  
REV 2