

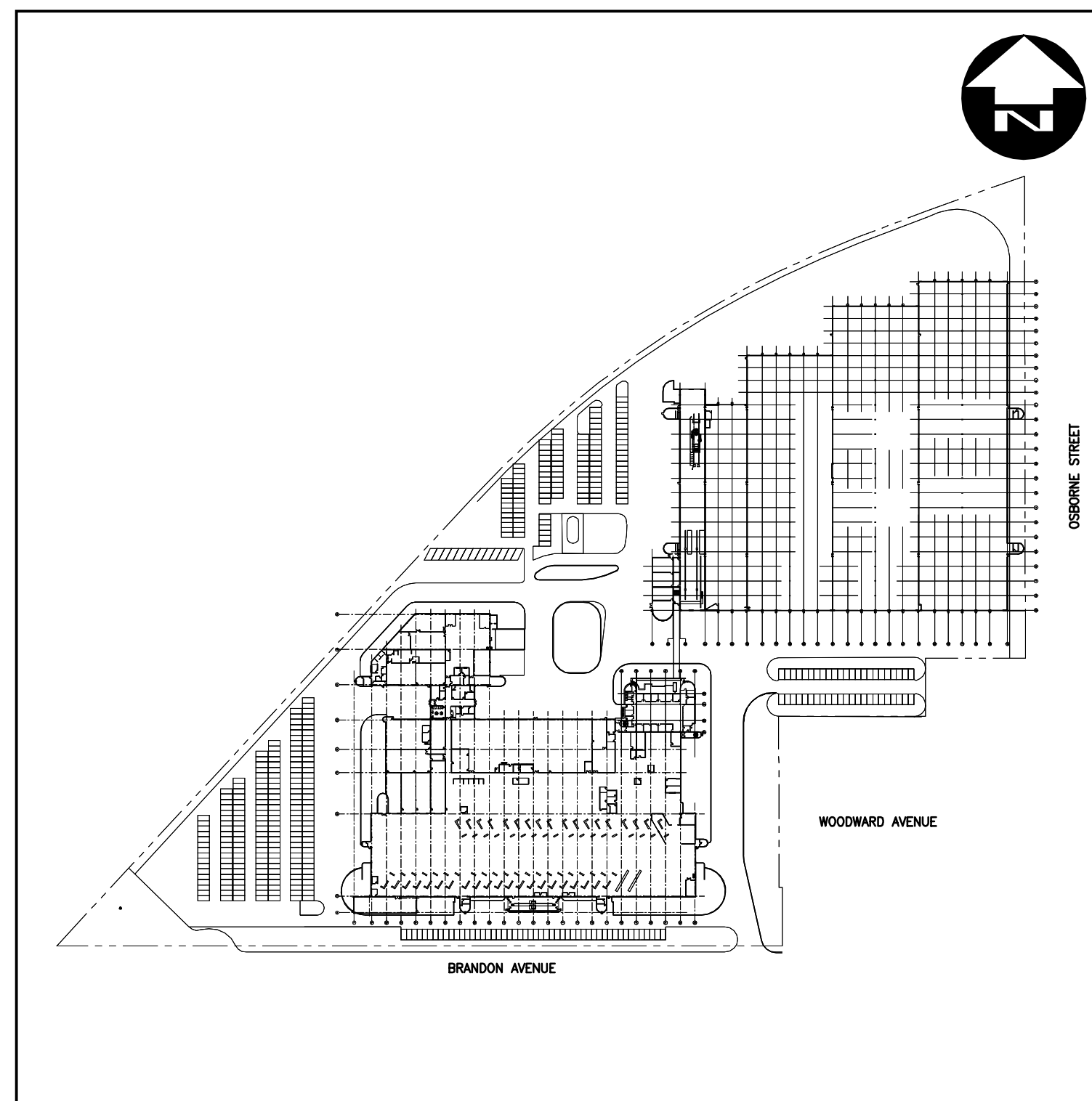


THE CITY OF WINNIPEG
TRANSIT DEPARTMENT

FORT ROUGE GARAGE COMPRESSED AIR SYSTEM UPGRADE

| MECHANICAL LEGEND | |
|-------------------|-----------------------|
| | EXISTING VALVE |
| | CHECK VALVE |
| | BALL VALVE |
| | REDUCER |
| | CAP |
| | PIPE ELBOW DOWN |
| | PIPE ELBOW UP |
| | NORMALLY OPENED |
| | NORMALLY CLOSED |
| | PRESSURE RELIEF VALVE |
| | PRESSURE GAUGE |
| | AIR INTAKE DUCT UP |
| | AIR EXHAUST DUCT UP |
| | EQUIPMENT TAG |
| | AIR FLOW DIRECTION |
| | TEMPERATURE SENSOR |
| | CONTROL DAMPER |

| ELECTRICAL LEGEND | |
|-------------------|--|
| | NEW CABLE OR CONDUIT & WIRE AS SPECIFIED ON FLOOR PLAN |
| | DIRECT ELECTRICAL CONNECTION |
| | DISCONNECT SWITCH |
| | SURFACE MOUNTED DUPLEX RECEPTACLE |



SITE PLAN

| DRAWING INDEX | |
|---------------|--|
| D W G. | DESCRIPTION |
| MECHANICAL | |
| D1 | COMPRESSED AIR DEMOLITION PLAN |
| M1 | COMPRESSED AIR LAYOUT PLAN, SERVICE SHOP |
| M2 | COMPRESSED AIR LAYOUT PLAN, BUS BAY |
| M3 | COMPRESSED AIR PIPING SCHEMATIC, DETAILS, EQUIPMENT SCHEDULE & SEQUENCE OF OPERATION |
| ELECTRICAL | |
| E1 | FLOOR PLANS |
| E2 | SCHEDULES AND DETAILS |
| | |
| | |
| | |
| | |

DILLON PROJECT: 149749
DATE: APRIL 10, 2015