

APPENDIX 'F'

GEOTECHNICAL REPORT

APPENDIX 'F' – GEOTECHNICAL REPORT

TABLE OF CONTENTS

GEOTECHNICAL REPORT FOR RUE VALADE	1
Test Hole Locations	1
Summary of Core Samples	2
Pavement Core Photos	3
GEOTECHNICAL REPORT FOR HULL AVENUE	4
Test Hole Locations	4
Summary of Core Samples	5
Pavement Core Photos	6
GEOTECHNICAL REPORT FOR HINDLEY AVENUE	7
Test Hole Locations	7
Summary of Core Samples	8
Pavement Core Photos	9

The geotechnical report is provided to aid in the Contractor's evaluation of the existing pavement structure and/or soil conditions. The information presented is considered accurate at the locations shown on the Drawings and at the time of drilling. However, variations in pavement structure and/or soil conditions may exist between test holes and fluctuations in groundwater levels can be expected seasonally and may occur as a result of construction activities. The nature and extent of variations may not become evident until construction commences.

Summary of Core Samples

Table 1
Summary of Pavement Structure

File No.: 14-113-01

Rue Valade between Rue Despins and Dollard Blvd

Page 1 of 2

Test Hole Number	Test Hole Location	Pavement Surface		Pavement Structure Material		Subgrade Description	Sample Depth (m)	Moisture Content (%)	Hydrometer Analysis				Atterberg Limits			
		Type	Thickness (mm)	Type	Thickness (mm)				Gravel (%)	Sand (%)	Silt (%)	Clay (%)	Liquid Limit	Plastic Limit	Plasticity Index	
1	Rue Valade	Asphalt	155	Crushed Granular	460	Clay	0.1-0.4	22.8								
							0.7	28.6								
							1.0	36.5								
		1.3	34.8				0.0	4.9	24.9	70.2	85	27	58			
		1.6	33.7													
		1.9	30.4													
2	Rue Valade	Asphalt	57	Crushed Granular	150	Clay	0.1-0.4	21.5								
							0.7	23.9								
							1.0	26.8								
		1.3	31.7													
		1.6	34.9													
		1.9	32.3													

Table 1
Summary of Pavement Structure

File No.: 14-113-01

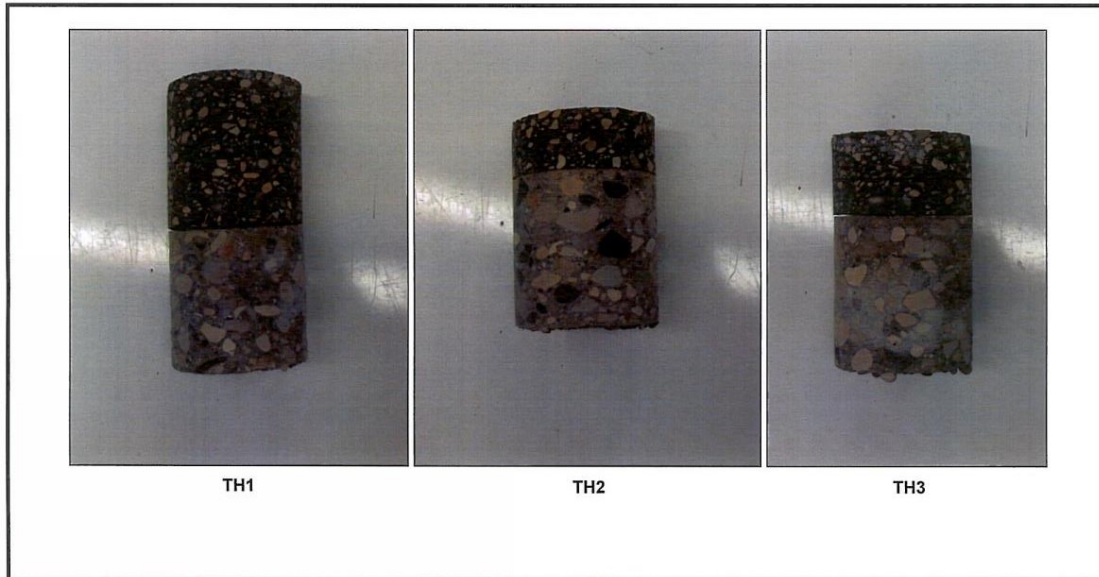
Rue Valade between Dollard Blvd. and Despins Street

Page 2 of 2

Test Hole Number	Test Hole Location	Pavement Surface		Pavement Structure Material		Subgrade Description	Sample Depth (m)	Moisture Content (%)	Hydrometer Analysis				Atterberg Limits			
		Type	Thickness (mm)	Type	Thickness (mm)				Gravel (%)	Sand (%)	Silt (%)	Clay (%)	Liquid Limit	Plastic Limit	Plasticity Index	
3	Rue Valade	Asphalt	83	Crushed Granular	150	Silty Clay	0.1-0.4	20.3								
							0.7	34.0								
							1.0	23.2								
		1.3	16.8													
		1.6	22.1													
		1.9	21.2													

- N.P. = Non-Plastic.

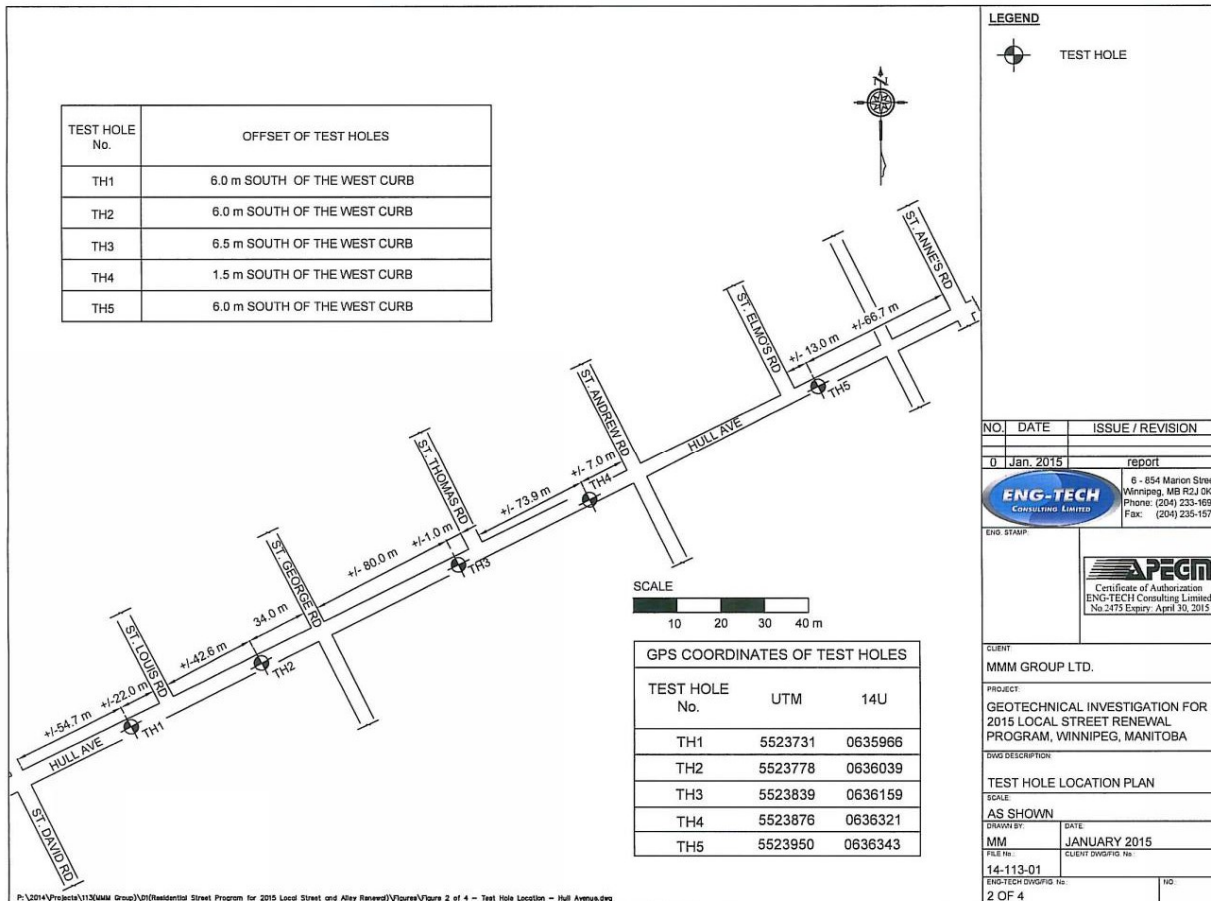
Pavement Core Photos



Rue Valade (Rue Despins to Dollard Blvd.)

Geotechnical Report for Hull Avenue

Test Hole Locations



P:\2014\Projects\113\MM Group\Residential Street Program for 2015 Local Street and Alley Renewal\Figures\Figure 2 of 4 - Test Hole Location - Hull Avenue.dwg

Summary of Core Samples

Table 2
Summary of Pavement Structure

File No.: 14-113-01

Hull Avenue between St. Anne's Road and St. David's Road

Page 1 of 3

Test Hole Number	Test Hole Location	Pavement Surface		Pavement Structure Material		Subgrade Description	Sample Depth (m)	Moisture Content (%)	Hydrometer Analysis				Atterberg Limits			
		Type	Thickness (mm)	Type	Thickness (mm)				Gravel (%)	Sand (%)	Silt (%)	Clay (%)	Liquid Limit	Plastic Limit	Plasticity Index	
1	Hull Avenue	Concrete	153	-	-	Clay	0.1-0.4	38.3								
							0.7	35.5								
							1.0	33.0	0.1	2.1	21.4	76.4	75	23	52	
							1.3	24.8								
							1.6	23.3	0.0	2.3	80.3	17.4	28	18	10	
							1.9	31.7								
2	Hull Avenue	Concrete	150	Granular Fill	75	Clay	0.1-0.4	30.5								
							0.7	30.6								
							1.0	29.7								
							1.3	39.4								
							1.6	40.3								
							1.9	41.1								

Table 2
Summary of Pavement Structure

File No.: 14-113-01

Hull Avenue between St. Anne's Road and St. David's Road

Page 2 of 3

Test Hole Number	Test Hole Location	Pavement Surface		Pavement Structure Material		Subgrade Description	Sample Depth (m)	Moisture Content (%)	Hydrometer Analysis				Atterberg Limits			
		Type	Thickness (mm)	Type	Thickness (mm)				Gravel (%)	Sand (%)	Silt (%)	Clay (%)	Liquid Limit	Plastic Limit	Plasticity Index	
3	Hull Avenue	Concrete	135	Granular Fill	200	Clay	0.1-0.4	11.6								
							0.7	23.1								
							1.0	24.4								
							1.3	27.2								
							1.6	30.9								
							1.9	44.9								
4	Hull Avenue	Concrete	151	Granular Fill	150	Clay	0.1-0.4	18.1								
							0.7	30.2								
							1.0	26.7								
							1.3	29.6								
							1.6	33.6	0.2	8.9	12.4	78.5	80	22	58	
							1.9	45.6								

Table 2
Summary of Pavement Structure

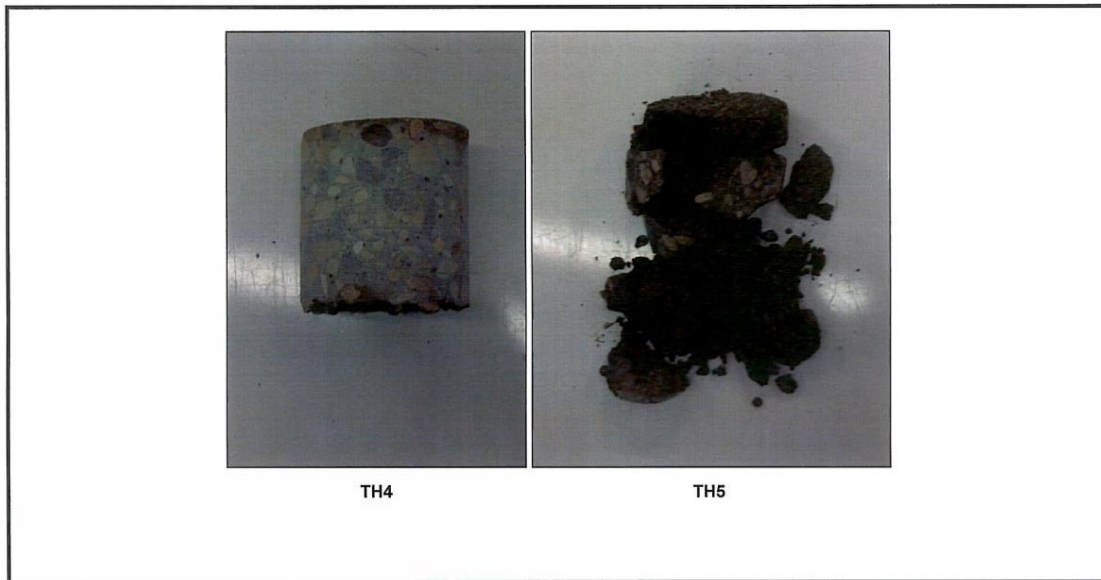
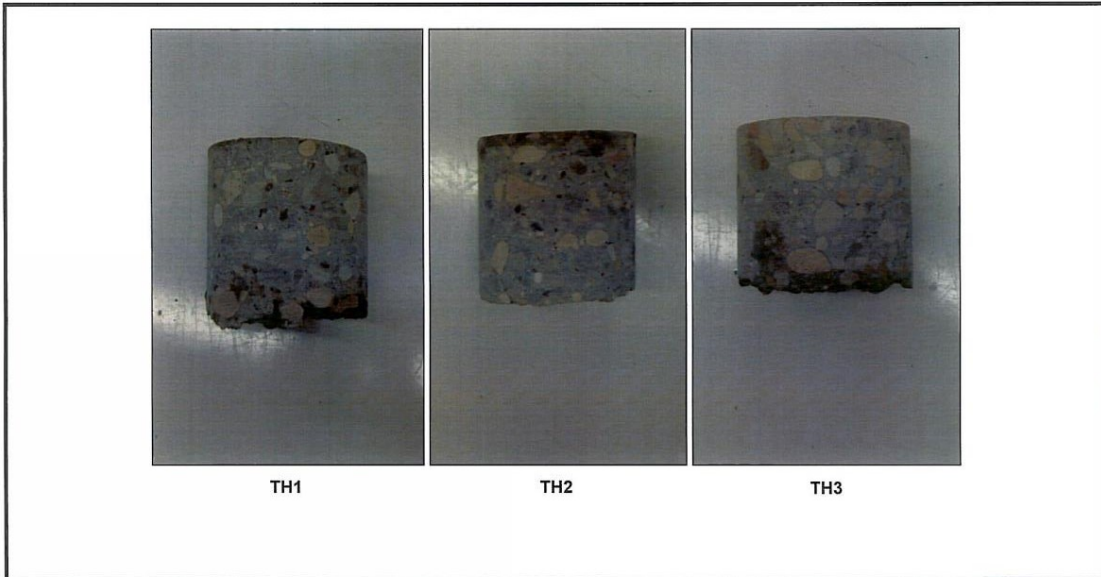
File No.: 14-113-01

Hull Avenue between St. Anne's Road and St. David's Road

Page 3 of 3

Test Hole Number	Test Hole Location	Pavement Surface		Pavement Structure Material		Subgrade Description	Sample Depth (m)	Moisture Content (%)	Hydrometer Analysis				Atterberg Limits		
		Type	Thickness (mm)	Type	Thickness (mm)				Gravel (%)	Sand (%)	Silt (%)	Clay (%)	Liquid Limit	Plastic Limit	Plasticity Index
5	Hull Avenue	Asphalt	42	Granular Fill	75	Clayey Silt	0.1-0.4	15.4							
							0.7	24.5	0.0	9.8	60.3	29.9	36	14	22
							1.0	26.8							
							1.3	22.9							
		Concrete	153	Clay	1.6	28.1									
					1.9	40.0									

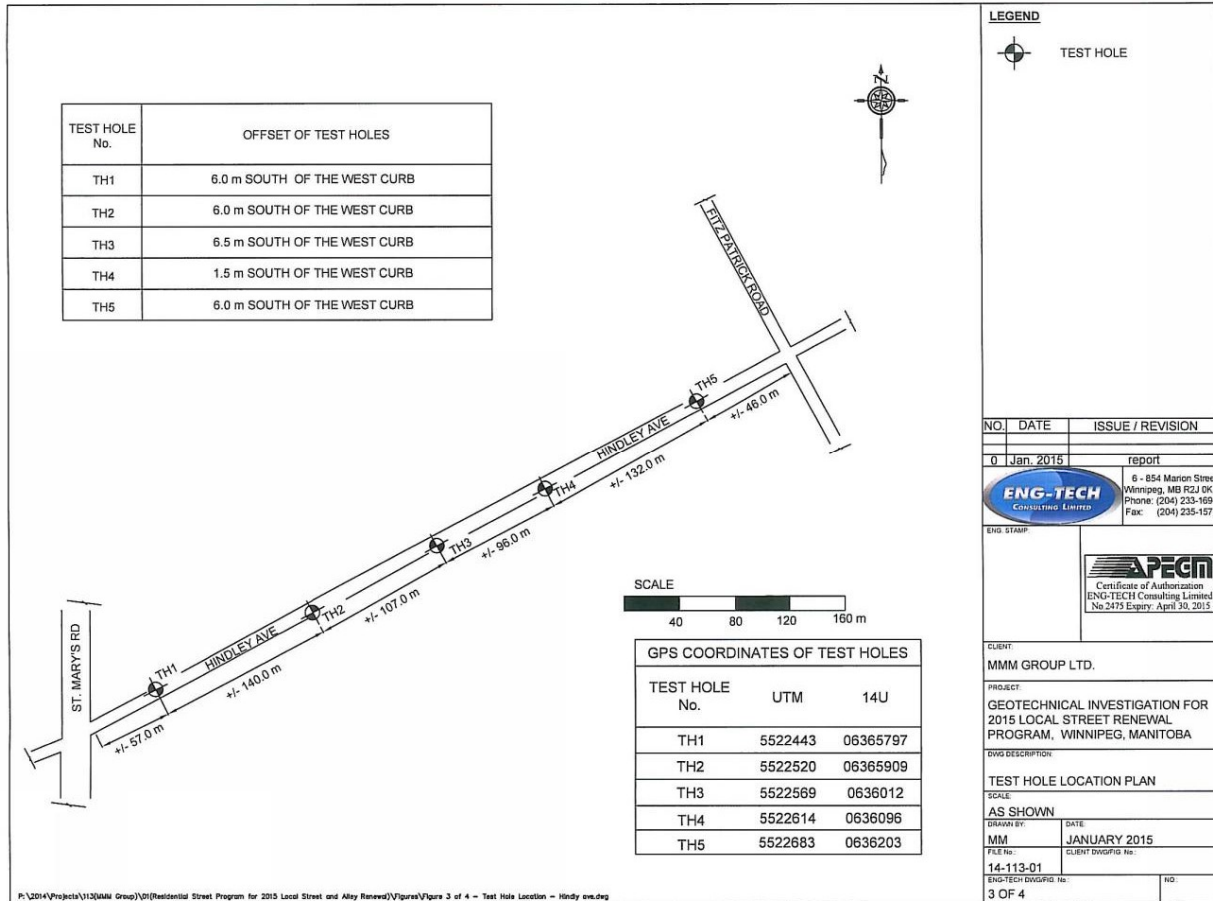
Pavement Core Photos



Hull Avenue (St. Anne's Road to St. David Road)

Geotechnical Report for Hindley Avenue

Test Hole Locations



P:\2014\Projects\1130\MM Group\01\Residential Street Program for 2015 Local Street and Alley Renewal\Figures\Figure 3 of 4 - Test Hole Location - Handy on.dwg

Summary of Core Samples

Table 3
Summary of Pavement Structure

File No.: 14-113-01

Hindley Avenue between St. Mary's Road and Fitzpatrick Road

Page 1 of 3

Test Hole Number	Test Hole Location	Pavement Surface		Pavement Structure Material		Subgrade Description	Sample Depth (m)	Moisture Content (%)	Hydrometer Analysis				Atterberg Limits			
		Type	Thickness (mm)	Type	Thickness (mm)				Gravel (%)	Sand (%)	Silt (%)	Clay (%)	Liquid Limit	Plastic Limit	Plasticity Index	
1	Hindley Avenue	Concrete	162	Crushed Granular	300	Clay	0.1-0.4	20.2								
							0.7	33.1								
							1.0	33.5								
							1.3	36.2								
							1.6	36.0	0.0	6.5	1.4	92.1	97	24	73	
							1.9	28.4								
2	Hindley Avenue	Concrete	145	Crushed Granular	200	Clay	0.1-0.4	29.6								
							0.7	34.0								
							1.0	40.3								
							1.3	40.7								
							1.6	39.0								
							1.9	34.4								

Table 3
Summary of Pavement Structure

File No.: 13-113-01

Hindley Avenue between St. Mary's Road and Fitzpatrick Road

Page 2 of 3

Test Hole Number	Test Hole Location	Pavement Surface		Pavement Structure Material		Subgrade Description	Sample Depth (m)	Moisture Content (%)	Hydrometer Analysis				Atterberg Limits			
		Type	Thickness (mm)	Type	Thickness (mm)				Gravel (%)	Sand (%)	Silt (%)	Clay (%)	Liquid Limit	Plastic Limit	Plasticity Index	
3	Hindley Avenue	Concrete	180	Crushed Granular	150	Clay	0.1-0.4	22.3								
							0.7	38.2								
							1.0	35.4	1.1	20.2	9.5	69.2	81	26	55	
							1.3	34.0								
							1.6	38.5								
							1.9	33.2								
4	Hindley Avenue	Concrete	160	Crushed Granular	100	Clay	0.1-0.4	15.6								
							0.7	32.6								
							1.0	35.4								
							1.3	30.2								
							1.6	26.8								
							1.9	36.1								

Table 3
Summary of Pavement Structure

File No.: 14-113-01

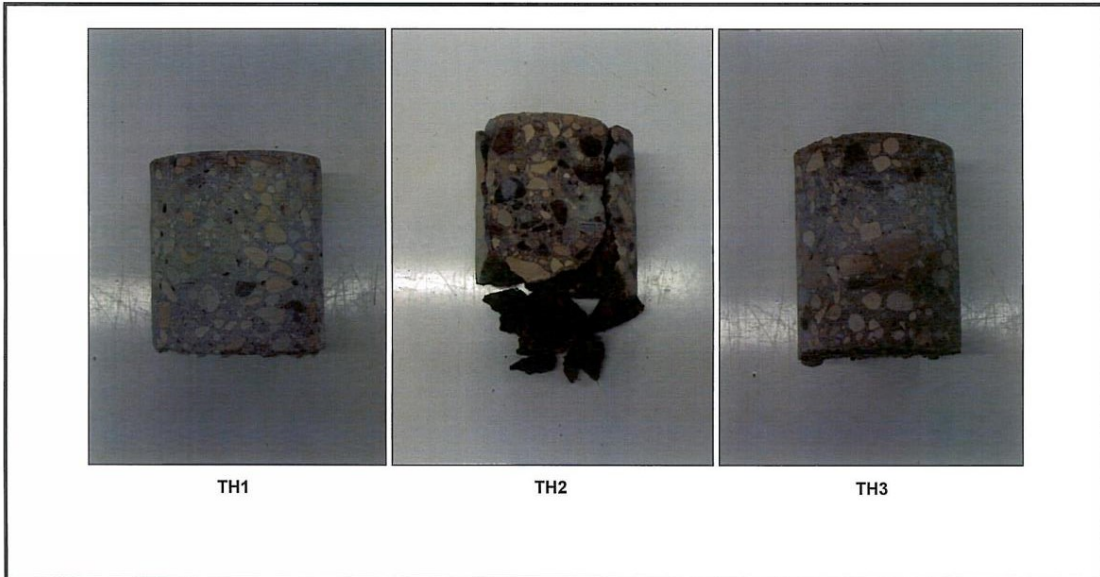
Hindley Avenue between St. Mary's Road and Fitzpatrick Road

Page 3 of 3

Test Hole Number	Test Hole Location	Pavement Surface		Pavement Structure Material		Subgrade Description	Sample Depth (m)	Moisture Content (%)	Hydrometer Analysis				Atterberg Limits		
		Type	Thickness (mm)	Type	Thickness (mm)				Gravel (%)	Sand (%)	Silt (%)	Clay (%)	Liquid Limit	Plastic Limit	Plasticity Index
5	Hindley Avenue	Concrete	155	Crushed Granular	200	Silty Clay	0.1-0.4	10.7							
							0.7	30.3							
							1.0	28.2	0.9	10.5	30.2	58.4	65	20	45
							1.3	30.2							
							1.6	29.8							
							1.9	31.3							

- N.P. = Non-Plastic.

Pavement Core Photos



Hindley Avenue (Fitzpatrick Road to St. Mary's Road)