

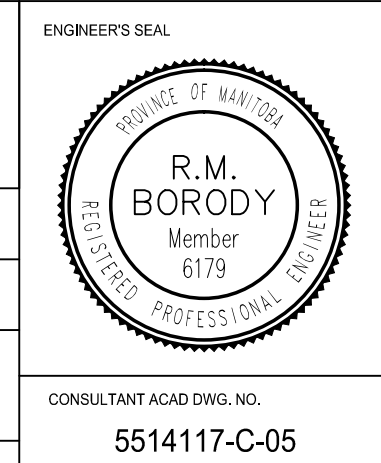
NOTE:
These design documents are prepared solely for the use by the party with whom the design professional has entered into a contract and there are no representations of any kind made by the design professional to any party with whom the design professional has not entered into a contract.

EXISTING	LEGEND-PLAN	PROPOSED	EXISTING	LEGEND-PLAN	PROPOSED	EXISTING	LEGEND-PROFILE	PROPOSED
○	WATER MAIN	—	—	ANCHOR	—	—	WEST-SIDE MEDIAN	—
□	LAND DRAINAGE SEWER	—	—	#111 CIVIC ADDRESS	—	—	EAST-SIDE MEDIAN	—
—	WASTE WATER SEWER	—	—	—	—	—	ROADWAY CENTRE LINE	—
—	HYDRO	—	—	—	—	—	WEST GUTTER	—
—	M.T.S.	—	—	—	—	—	EAST GUTTER	—
—	GAS	—	—	—	—	—	WEST PROPERTY LINE	—
—	SIGNALS	—	—	—	—	—	EAST PROPERTY LINE	—
—	MANHOLE	—	—	—	—	—	—	—
—	CATCH BASIN	—	—	—	—	—	—	—
—	CURB INLET	—	—	—	—	—	—	—
—	UTILITIES ADJUSTED	—	—	—	—	—	—	—
—	PLUG	—	—	—	—	—	—	—
—	HYDRANT	—	—	—	—	—	—	—
—	VALVE	—	—	—	—	—	—	—
—	CURB STOP	—	—	—	—	—	—	—
—	GROUND GRADE	—	—	—	—	—	—	—
—	PAVEMENT GRADE	—	—	—	—	—	—	—
—	LOT GRADE	—	—	—	—	—	—	—
—	EXISTING	—	—	—	—	—	—	—

LOCATIONS APPROVED UNDERGROUND STRUCTURES		BENCHMARK LOCATION ON TOP OF BRASS CAP AT THE NORTHEAST CORNER OF REENDERS AND STAPON ROAD	
SIGNED BY:	DATE:	G.B.M. -	ELEV. 231.584
SUPV U/G STRUCTURES	DATE	DESIGNED BY	SDG
LOCATION OF UNDERGROUND STRUCTURES AS SHOWN ARE BASED ON THE BEST INFORMATION AVAILABLE BUT NO GUARANTEE IS GIVEN THAT ALL EXISTING UTILITIES ARE SHOWN OR THAT THE GIVEN LOCATIONS ARE EXACT CONFIRMATION OF EXISTENCE AND EXACT LOCATION OF ALL SERVICES MUST BE OBTAINED FROM THE INDIVIDUAL UTILITIES BEFORE PROCEEDING		DRAWN BY	TR/VA
		CHECKED BY	SDG
		APPROVED BY	-
		RELEASED FOR CONSTRUCTION	
		HOR. SCALE	1:250
		VERTICAL	1:10
		DATE	12-DEC-2014
		NO.	REVISIONS

- NOTES:
- ALL WORK AND MATERIALS TO BE IN ACCORDANCE WITH THE LATEST REVISION OF THE CITY OF WINNIPEG STANDARD CONSTRUCTION SPECIFICATIONS.
 - ALL ROADWAY DIMENSIONS SHOWN ARE TO BACK OF CURB.
 - BOULEVARD RESTORATION TO BE SOD UNLESS OTHERWISE NOTED.
 - CURB 150mm REVEAL UNLESS OTHERWISE SHOWN.
 - ADD 200.00 TO ALL ELEVATIONS TO OBTAIN GEODETIC ELEVATIONS.
 - ADDITIONAL CURB RENEWALS, JOINT AND SLAB REPAIRS WILL BE IDENTIFIED PRIOR TO COMMENCING WORK ON THE PROJECT.

METRIC
WHOLE NUMBERS INDICATE MILLIMETRES
DECIMALIZED NUMBERS INDICATE METRES



THE CITY OF WINNIPEG
PUBLIC WORKS DEPARTMENT
ENGINEERING DIVISION

2015 STREET RENEWAL PROGRAM

STAPON ROAD - REGENT AVENUE WEST TO REENDERS DRIVE
PAVEMENT REHABILITATION
STA. 3+70 TO STA. 5+07

CITY DRAWING NUMBER
SHEET 5 OF 17
BID NO. 24-2015

CONSULTANT ACAD DWG. NO. 5514117-C-05

Mar 12, 2015 - 11:21am
 C:\Users\jborody\Documents\Drawings\Renovations\5514117_C-05 Stapon Road Plan & Profile_20150316.dwg - tab:005