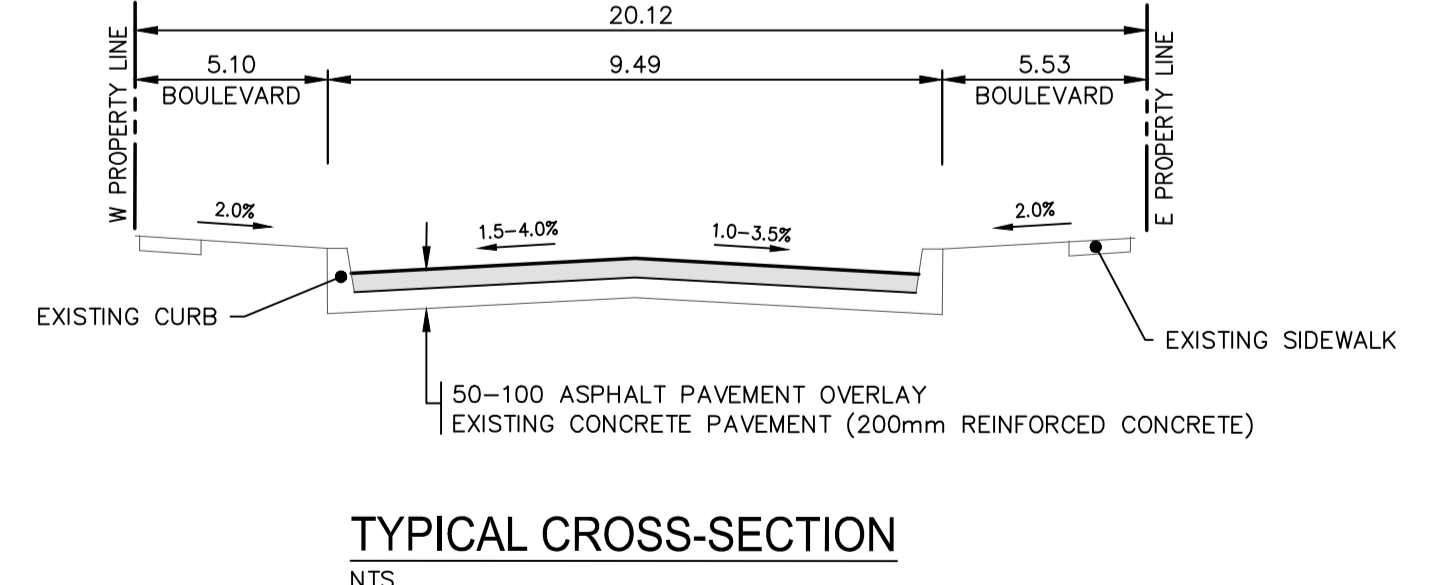


NOTE:
These design documents are prepared solely for the use by the party with whom the design professional has entered into a contract and there are no representations of any kind made by the design professional to any party with whom the design professional has not entered into a contract.

EXISTING	LEGEND-PLAN	PROPOSED	EXISTING	LEGEND-PLAN	PROPOSED	EXISTING	LEGEND-PROFILE	PROPOSED
---	WATER MAIN	---	---	ANCHOR	---	---	CIVIC ADDRESS	---
---	LAND DRAINAGE SEWER	---	---	#111	---	---	IRON BAR	---
---	WASTE WATER SEWER	---	---	---	---	---	HYDRO POLE & LIGHT STANDARD	---
---	HYDRO	---	---	---	---	---	LIGHT STANDARD	---
---	M.T.S.	---	---	---	---	---	HYDRO POLE	---
---	GAS	---	---	---	---	---	CURB RAMP	---
---	SIGNALS	---	---	---	---	---	EDGE OF SIDEWALK	---
---	MANHOLE	---	---	---	---	---	PROPERTY LINE	---
---	CATCH BASIN	---	---	---	---	---	EDGE OF ASPHALT	---
---	CURB INLET	---	---	---	---	---	MODIFIED BARRIER CURB	---
---	UTILITIES ADJUSTED	---	---	---	---	---	MODIFIED BARRIER CURB & GUTTER	---
---	PLUG	---	---	---	---	---	BARRIER CURB	---
---	HYDRANT	---	---	---	---	---	BARRIER CURB & GUTTER	---
---	VALVE	---	---	---	---	---	EDGE OF CONCRETE	---
---	CURB STOP	---	---	---	---	---	SIDEWALK	---
---	GROUND GRADE	---	---	---	---	---	CONCRETE	---
---	PAVEMENT GRADE	---	---	---	---	---	ASPHALT	---
---	LOT GRADE	---	---	---	---	---	MILLED SURFACE	---
---	EXISTING	---	---	---	---	---	WEST BACK OF SIDEWALK	---
---	LEGEND-PLAN	---	---	---	---	---	EAST GUTTER	---
---	PROPOSED	---	---	---	---	---	WEST GUTTER	---
---	EXISTING	---	---	---	---	---	EAST GUTTER	---
---	PROPOSED	---	---	---	---	---	EAST BACK OF SIDEWALK	---



- NOTES:**
1. ALL WORK AND MATERIALS TO BE IN ACCORDANCE WITH THE LATEST REVISION OF THE CITY OF WINNIPEG STANDARD CONSTRUCTION SPECIFICATIONS.
 2. ALL ROADWAY DIMENSIONS SHOWN ARE TO BACK OF CURB.
 3. BOULEVARD RESTORATION TO BE SOD UNLESS OTHERWISE NOTED.
 4. ADD 200.00 TO ELEVATIONS TO OBTAIN GEODETIC ELEVATION.
 5. CURB 180MM REVEAL UNLESS OTHERWISE NOTED.
 6. ALL PRIVATE WALKWAYS TO BE ADJUSTED TO NEW TOP OF CURB ELEVATION, AS REQUIRED.
 7. ADDITIONAL SIDEWALK RENEWALS, JOINT AND SLAB REPAIRS WILL BE IDENTIFIED PRIOR TO COMMENCING WORK ON THE PROJECT.

METRIC
WHOLE NUMBERS INDICATE MILLIMETRES
DECIMALIZED NUMBERS INDICATE METRES



LOCATIONS APPROVED UNDERGROUND STRUCTURES

SIGNED BY: _____ DATE: _____

LOCATION OF UNDERGROUND STRUCTURES AS SHOWN ARE BASED ON THE BEST INFORMATION AVAILABLE BUT NO GUARANTEE IS GIVEN THAT ALL EXISTING UTILITIES ARE SHOWN OR THAT THE GIVEN LOCATIONS ARE EXACT CONFIRMATION OF EXISTENCE AND EXACT LOCATION OF ALL SERVICES MUST BE OBTAINED FROM THE INDIVIDUAL UTILITIES BEFORE PROCEEDING

NO.	REVISIONS	DATE	BY
F			
E			
D	ADDENDUM 2	27.03.15	SDG
C	ADDENDUM 1	26.03.15	SDG
B	ISSUED FOR TENDER	16.03.15	SDG
A	ISSUED TO U/G STRUCTURES FOR REVIEW	19.02.15	SDG

MMM GROUP

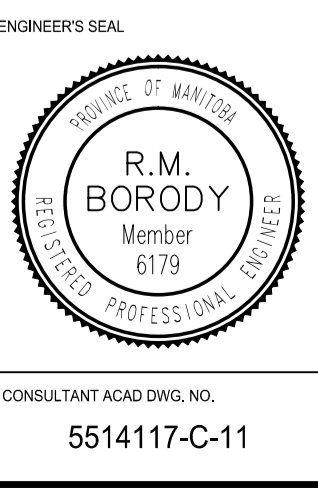
DESIGNED BY: **RE**
CHECKED BY: **SDG**

DRAWN BY: **TR/HK**
APPROVED BY: **-**

HOR. SCALE: 1:250
VERTICAL: 1:10

DATE: 11-NOV-2014

MM Group Limited,
Suite 111 - 93 Lombard Ave,
Winnipeg, MB R3B 3B1
t: 204.943.3178
f: 204.943.4948
www.mmgroup.ca



THE CITY OF WINNIPEG
PUBLIC WORKS DEPARTMENT
ENGINEERING DIVISION

2015 STREET RENEWAL PROGRAM

RUE DES MEURONS - CARRIERE AVENUE TO HORACE STREET

PAVEMENT REHABILITATION
STA. 1+03 TO STA. 2+70

CITY DRAWING NUMBER
SHEET 11 OF 17

BID NO.
24-2015