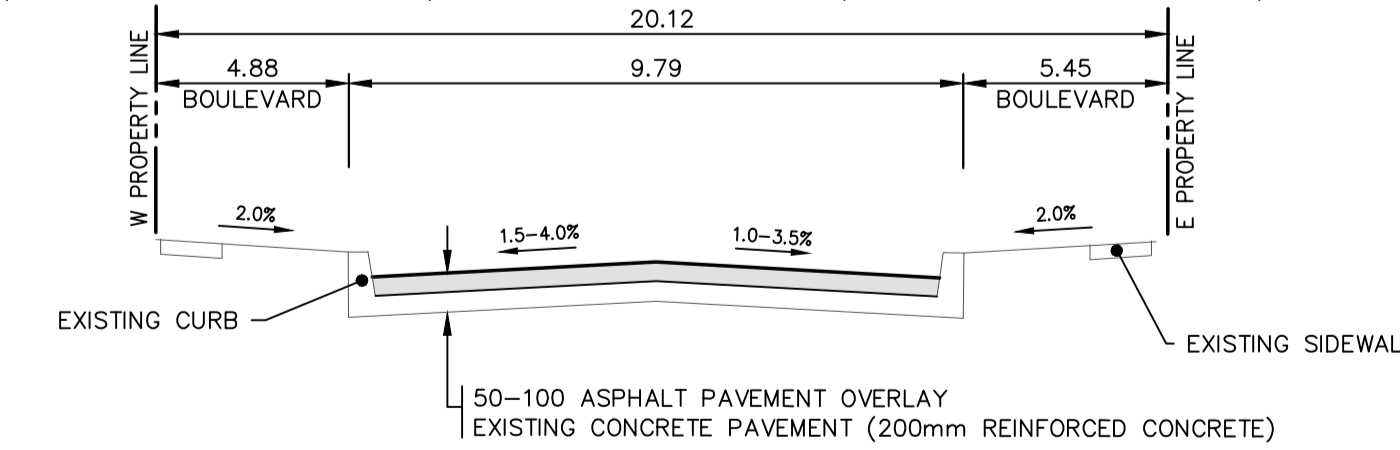


NOTE:
These design documents are prepared solely for the use by the party with whom the design professional has entered into a contract and there are no representations of any kind made by the design professional to any party with whom the design professional has not entered into a contract.

| EXISTING | LEGEND-PLAN | PROPOSED | EXISTING | LEGEND-PLAN | PROPOSED | EXISTING | LEGEND-PROFILE | PROPOSED |
|----------|---------------------|----------|----------|--------------------------------|----------|----------|----------------|----------|
| --- | WATER MAIN | --- | --- | ANCHOR | --- | --- | --- | --- |
| --- | LAND DRAINAGE SEWER | --- | --- | #111 CIVIC ADDRESS | --- | --- | --- | --- |
| --- | WASTE WATER SEWER | --- | --- | IRON BAR | --- | --- | --- | --- |
| --- | HYDRO | --- | --- | HYDRO POLE & LIGHT STANDARD | --- | --- | --- | --- |
| --- | M.T.S. | --- | --- | LIGHT STANDARD | --- | --- | --- | --- |
| --- | GAS | --- | --- | HYDRO POLE | --- | --- | --- | --- |
| --- | SIGNALS | --- | --- | CURB RAMP | --- | --- | --- | --- |
| --- | MANHOLE | --- | --- | EDGE OF SIDEWALK | --- | --- | --- | --- |
| --- | CATCH BASIN | --- | --- | PROPERTY LINE | --- | --- | --- | --- |
| --- | CURB INLET | --- | --- | EDGE OF ASPHALT | --- | --- | --- | --- |
| --- | UTILITIES ADJUSTED | --- | --- | MODIFIED BARRIER CURB | --- | --- | --- | --- |
| --- | PLUG | --- | --- | MODIFIED BARRIER CURB & GUTTER | --- | --- | --- | --- |
| --- | HYDRANT | --- | --- | BARRIER CURB | --- | --- | --- | --- |
| --- | VALVE | --- | --- | BARRIER CURB & GUTTER | --- | --- | --- | --- |
| --- | CURB STOP | --- | --- | EDGE OF CONCRETE | --- | --- | --- | --- |
| --- | GROUND GRADE | --- | --- | SIDEWALK | --- | --- | --- | --- |
| --- | PAVEMENT GRADE | --- | --- | CONCRETE | --- | --- | --- | --- |
| --- | LOT GRADE | --- | --- | ASPHALT | --- | --- | --- | --- |
| --- | LEGEND-PLAN | --- | --- | MILLED SURFACE | --- | --- | --- | --- |
| --- | LEGEND-PLAN | --- | --- | WEST BACK OF SIDEWALK | --- | --- | --- | --- |
| --- | LEGEND-PLAN | --- | --- | EAST GUTTER | --- | --- | --- | --- |
| --- | LEGEND-PLAN | --- | --- | WEST GUTTER | --- | --- | --- | --- |
| --- | LEGEND-PLAN | --- | --- | EAST GUTTER | --- | --- | --- | --- |
| --- | LEGEND-PLAN | --- | --- | WEST BACK OF SIDEWALK | --- | --- | --- | --- |
| --- | LEGEND-PLAN | --- | --- | EAST BACK OF SIDEWALK | --- | --- | --- | --- |

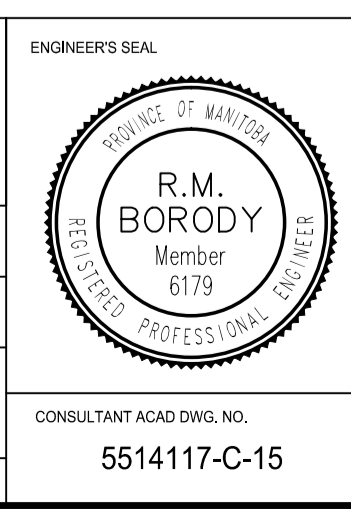


LOCATIONS APPROVED UNDERGROUND STRUCTURES
 SIGNED BY: _____ DATE: _____
 SUPV U/G STRUCTURES

| NO. | REVISIONS | DATE | BY |
|-----|-------------------------------------|----------|-----|
| F | | | |
| E | | | |
| D | | | |
| C | ADDENDUM 1 | 26.03.15 | SDG |
| B | ISSUED FOR TENDER | 16.03.15 | SDG |
| A | ISSUED TO U/G STRUCTURES FOR REVIEW | 19.02.15 | SDG |

MMM GROUP
 Suite 111 - 93 Lombard Ave.
 Winnipeg, MB R3B 3B1
 t: 204.943.3178
 f: 204.943.4948
 www.mmm.ca

DESIGNED BY: RE
 CHECKED BY: SDG
 DRAWN BY: TR/HK
 APPROVED BY: -
 HOR SCALE: 1:250
 VERTICAL: 1:10
 DATE: 11-NOV-2014



THE CITY OF WINNIPEG
 PUBLIC WORKS DEPARTMENT
 ENGINEERING DIVISION

2015 STREET RENEWAL PROGRAM
 RUE DES MEURONS - CARRIERE AVENUE TO HORACE STREET
 PAVEMENT REHABILITATION
 STA. 8+10 TO STA. 9+85

CITY DRAWING NUMBER: 15 OF 17
 BID NO. 24-2015

METRIC
 WHOLE NUMBERS INDICATE MILLIMETRES
 DECIMALIZED NUMBERS INDICATE METRES

APGM
 Certificate of Authorization
 MMM Group Limited
 No. 4531

Mar 26, 2015 - 8:37am
 P:\514100-514100-514100-514117 - 2015 Local Streets and Alley Renewal Program\15-R-04\MM\Drawings\Construction Drawings\Rehabilitation\514117_C11-C15 Des Meurons Plan & Profile_20150326.dwg - lab:05