

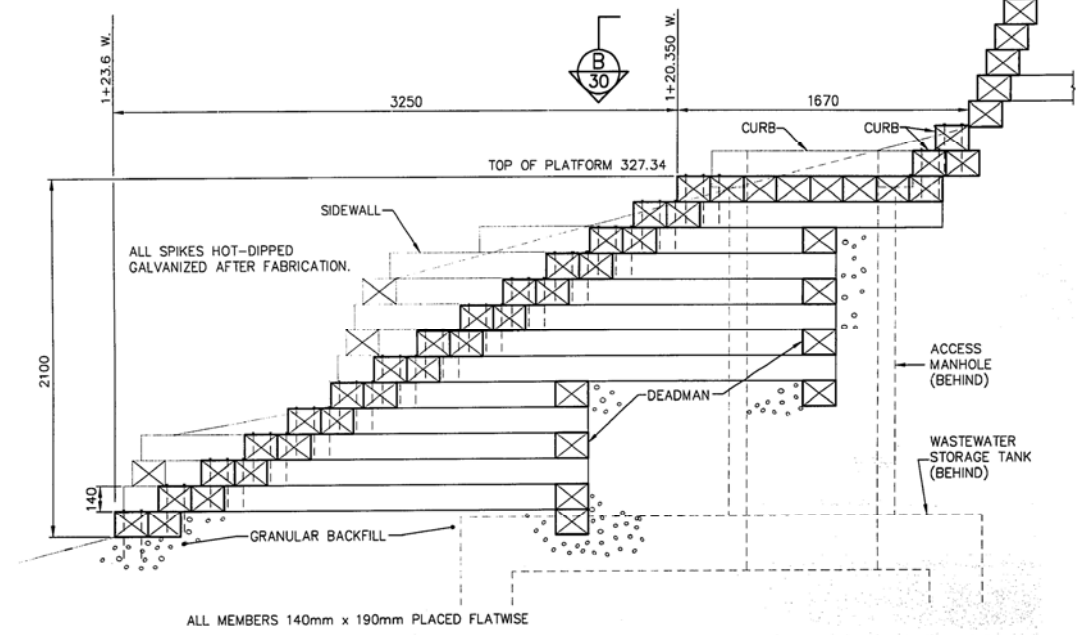
Bid Opportunity 231-2015
Shoal Lake Intake Fuel Storage and Delivery System Rehabilitation
Addendum No. 1

**Appendix G: As-Built Site Landscaping Drawing
(For Information Only)**

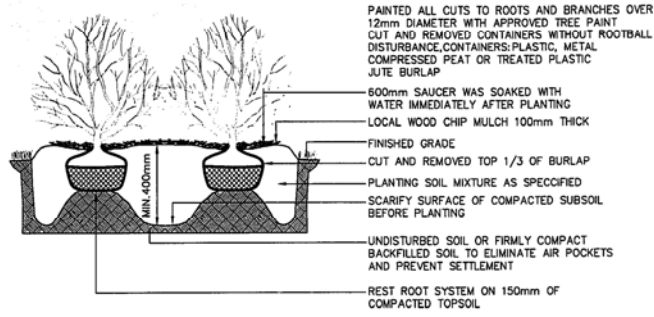
D-3828 – RETAINING WALL SECTIONS AND DETAILS

See following page for Drawing.

1. ALL TIMBER WAS PRESSURE TREATED PINE, CCA TYPE B, DIMPLD, TO AN AVERAGE NET RETENTION OF 6.4 KG/M.
2. ALL FIELD CUTS AND HOLES WERE TREATED WITH TWO COATS MATCHING COLOUR FIELD CUT PRESERVATIVE.
3. GRANULAR BACKFILL FOR RETAINING WALL WAS BASE COURSE COMPACTED TO 100% STANDARD PROCTOR DENSITY IN MAXIMUM 150mm LIFTS.

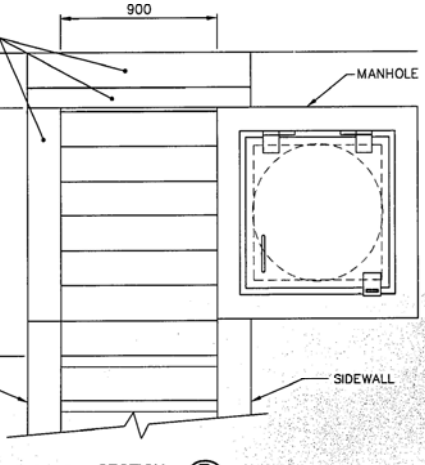


MANHOLE ACCESS STAIRS (B)
SCALE 1:20

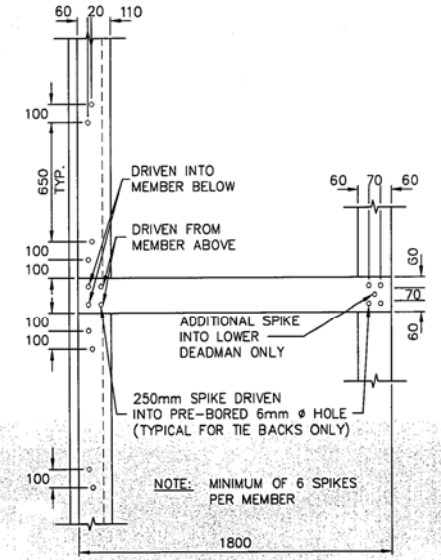


TYPICAL SHRUB BED PLANTING
N.T.S.

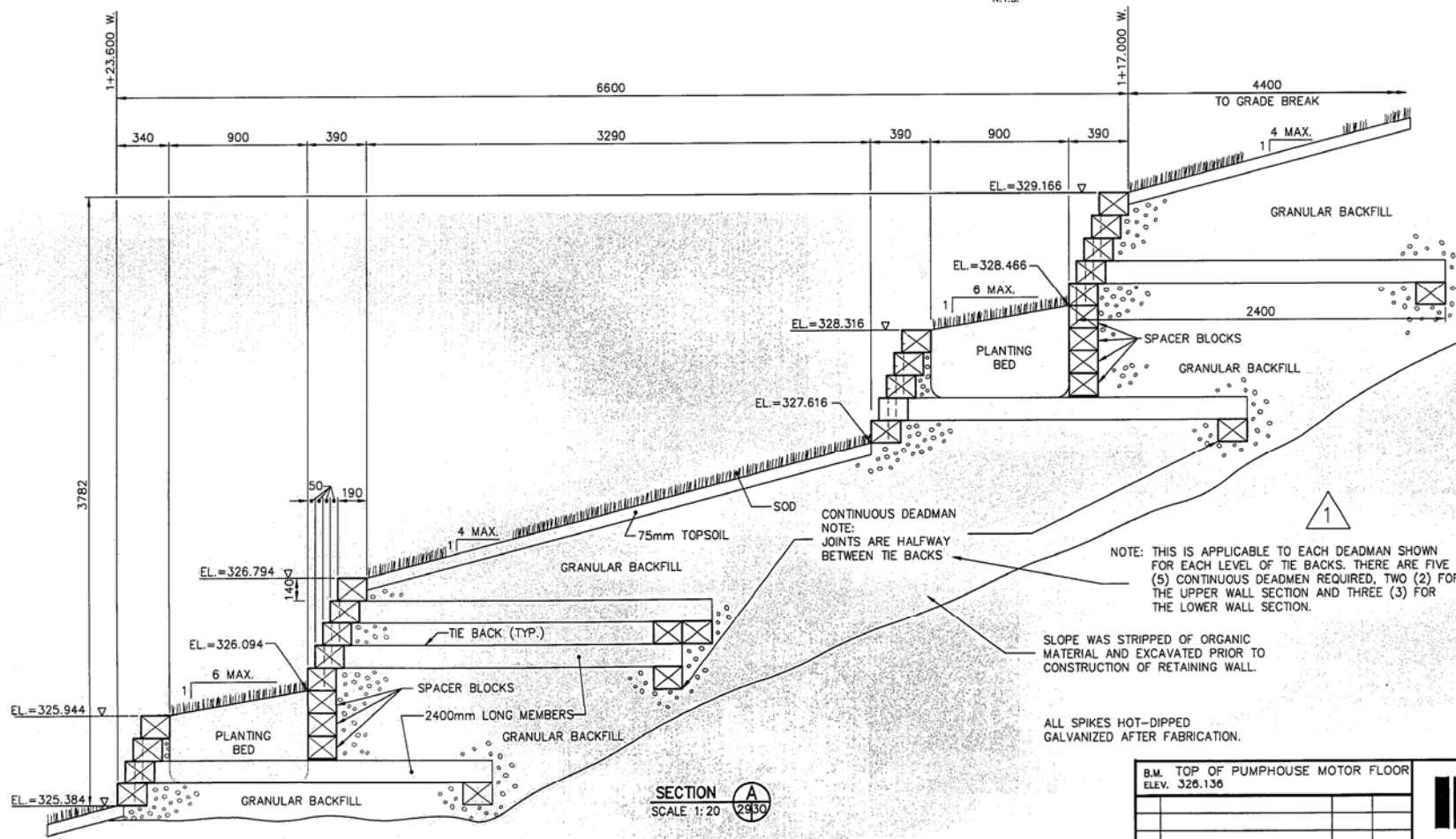
SECTION (C)
SCALE 1:100



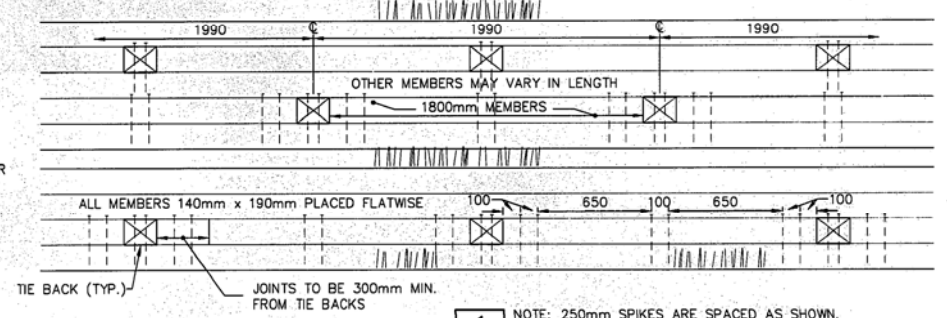
SECTION (B)
SCALE 1:20



DEADMAN AND TYPICAL CONNECTION DETAILS
SCALE 1:20



SECTION (A)
SCALE 1:20



DETAIL 1
SCALE 1:20

NOTE: 250mm SPIKES ARE SPACED AS SHOWN. ALL OTHER MEMBERS HAVE 2-250mm SPIKES EVERY 700mm WITH A MINIMUM OF 6 SPIKES PER MEMBER.

REVISED AS CONSTRUCTED
DATE 17/11/95 BY kesh
CHECKED BY B.D.E.

NOTE:
LOCATION OF UNDERGROUND STRUCTURES AS SHOWN ARE BASED ON THE BEST INFORMATION AVAILABLE BUT NO GUARANTEE IS GIVEN THAT ALL EXISTING UTILITIES ARE SHOWN OR THAT THE GIVEN LOCATIONS ARE EXACT. CONFIRMATION OF EXISTENCE AND EXACT LOCATION OF ALL SERVICES MUST BE OBTAINED FROM THE INDIVIDUAL UTILITIES BEFORE PROCEEDING WITH CONSTRUCTION.

NO.	REVISIONS	DATE	BY	DATE
3	REVISED TO ASBUILT	03/06/97	SE.H.	
2	REVISED TO ASBUILT	07/11/95	K.R.	
1	ADDENDUM NO. 1 ADDED	06/04/94	D.S.	

IDE I.D. ENGINEERING CANADA INC.
Professional Engineers
WINNIPEG, MANITOBA

DESIGNED BY	B.D.E.	CHECKED BY	B.D.E.
DRAWN BY	A.P.	APPROVED BY	B.L.F.
HOR. SCALE:	AS SHOWN	RELEASED FOR CONSTRUCTION:	
VERTICAL:	AS SHOWN	DATE	FEB. 14, 1994



CONSULTANT DRAWING NO.
IB-40-515-SW5-AB

THE CITY OF WINNIPEG
WORKS AND OPERATIONS DIVISION
WATERWORKS WASTE & DISPOSAL DEPARTMENT

SHOAL LAKE INTAKE FACILITY UPGRADING
RETAINING WALL
SECTIONS AND DETAILS
D-3828

CITY DRAWING NUMBER
SHEET 30 OF 154