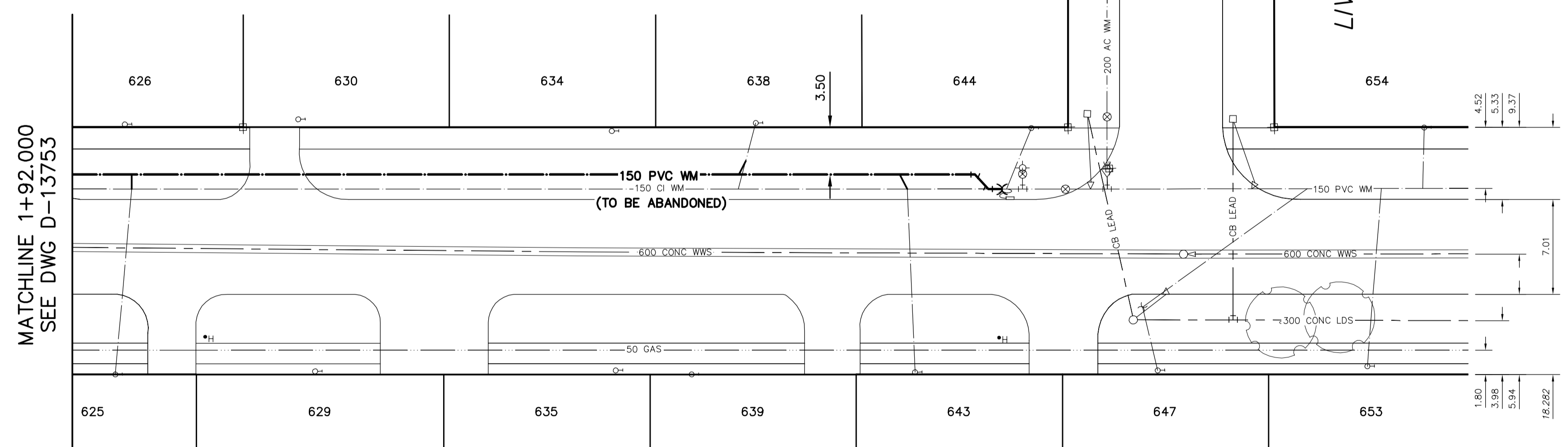
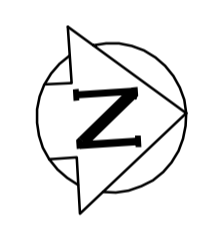


NOTE: CHAINAGES SHOWN ARE ALONG W. R. OF PARKHILL STREET

PARKHILL STREET



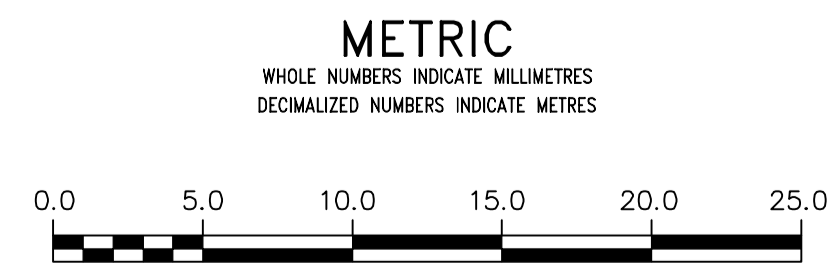
**WATER SERVICE INFORMATION**

ADDRESS	SIZE (mm) MATERIAL (STREET)	SIZE (mm) MATERIAL (PROP.)	SHORT & LONG MEASUREMENT	CORP. LOCATION	REMARKS
626 PARKHILL ST	-	20	7.5 S NL HSE	-	RECONNECT SERVICE
RESIDENTIAL	-	CU	69.71 SSL LIVINIA AV	-	RECONNECT SERVICE
630 PARKHILL ST	-	20	10.3 S NL HSE	-	RECONNECT SERVICE
RESIDENTIAL	-	CU	56.89 SSL LIVINIA AV	-	RECONNECT SERVICE
634 PARKHILL ST	-	20	2.2 S NL HSE	-	RECONNECT SERVICE
RESIDENTIAL	-	CU	33.72 SSL LIVINIA AV	-	RECONNECT SERVICE
638 PARKHILL ST	20	20	6.1 S NL HSE	1.3 S OF S/C	RECONNECT SERVICE
RESIDENTIAL	CU	CU	23.10 SSL LIVINIA AV	-	OUTSIDE LIMITS
644 PARKHILL ST	20	20	1.5 S NL HSE	1.8 S OF S/C	OUTSIDE LIMITS
RESIDENTIAL	CU	CU	2.70 SSL LIVINIA AV	-	OUTSIDE LIMITS
654 PARKHILL ST	20	20	2.6 S NL HSE	0.1 S OF S/C	OUTSIDE LIMITS
RESIDENTIAL	CU	CU	11.10 SSL LIVINIA AV	-	OUTSIDE LIMITS
635 PARKHILL ST	20	20	1.3 S NL HSE	1.2 N OF S/C	RECONNECT SERVICE
RESIDENTIAL	CU	CU	70.41 SSL LIVINIA AV	-	RECONNECT SERVICE
629 PARKHILL ST	-	20	8.6 S NL HSE	-	RECONNECT SERVICE
RESIDENTIAL	-	CU	55.64 SSL LIVINIA AV	-	RECONNECT SERVICE
635 PARKHILL ST	-	20	1.3 S NL HSE	-	RECONNECT SERVICE
RESIDENTIAL	-	CU	33.42 SSL LIVINIA AV	-	RECONNECT SERVICE
639 PARKHILL ST	-	20	5.9 S NL HSE	-	RECONNECT SERVICE
RESIDENTIAL	-	CU	27.81 SSL LIVINIA AV	-	RECONNECT SERVICE
643 PARKHILL ST	20	20	2.0 S NL HSE	0.6 S OF S/C	RECONNECT SERVICE
RESIDENTIAL	CU	CU	11.30 SSL LIVINIA AV	-	OUTSIDE LIMITS
647 PARKHILL ST	20	20	5.8 S NL HSE	11.1 N OF S/C	OUTSIDE LIMITS
RESIDENTIAL	CU	CU	6.63 SSL LIVINIA AV	-	OUTSIDE LIMITS
653 PARKHILL ST	20	20	5.0 S NL HSE	1.0 N OF S/C	OUTSIDE LIMITS
RESIDENTIAL	CU	CU	6.90 SSL LIVINIA AV	-	OUTSIDE LIMITS

\* SERVICES TO BE RENEWED TO R. ALL OTHERS TO BE RECONNECTED

FOR INDEX SEE D-13804

NOTE: ALL VALVES TO BE INSTALLED COUNTER-CLOCKWISE TO CLOSE



**WARNING**  
IF POWER EQUIPMENT OR EXPLOSIVES ARE TO BE USED FOR EXCAVATION ON THIS PROJECT THE CONTRACTOR MUST:  
1) NOTIFY THE GAS COMPANY OF THE PROPOSED LOCATION OF EXCAVATION.  
2) TAKE PRECAUTION TO AVOID DAMAGE TO GAS COMPANY INSTALLATIONS.  
SEE PROVINCIAL REGULATION 21072 FOR DETAILS

**LOCATION APPROVED UNDERGROUND STRUCTURES**  
SUPV. U/G STRUCTURES COMMITTEE DATE  
NOTE:  
LOCATION OF UNDERGROUND STRUCTURES AS SHOWN ARE BASED ON THE BEST INFORMATION AVAILABLE BUT NO GUARANTEE IS GIVEN THAT ALL EXISTING UTILITIES ARE SHOWN OR THAT THE GIVEN LOCATIONS ARE EXACT. CONFIRMATION OF EXISTENCE AND EXACT LOCATION OF ALL SERVICES MUST BE OBTAINED FROM THE INDIVIDUAL UTILITIES BEFORE PROCEEDING WITH CONSTRUCTION.

B.M. ELEV. \_\_\_\_\_  
CONSTRUCTION COMPLETION DATE: YYYY MM DD \_\_\_\_\_

NO.	REVISIONS	DATE	BY

DESIGNED BY	TS	CHECKED BY	SC
DRAWN BY	RS/MA	APPROVED BY	KZ
SCALE:	HORIZONTAL 1:250	RELEASED FOR CONSTRUCTION	
	VERTICAL 1:50	DATE	
DATE	2015 03 13	DATE	
PLOT DATE:	2015 03 13		

ENGINEER'S SEAL  
**ORIGINAL SIGNED BY S.J.R. COUNROYER 15/03/13**  
CONSULTANT DRAWING NUMBER \_\_\_\_\_

**THE CITY OF WINNIPEG**  
Winnipeg  
WATER AND WASTE DEPARTMENT  
ENGINEERING DIVISION  
2015 WATERMAIN RENEWALS  
PARKHILL STREET  
92 N OF PORTAGE AVENUE (N R) TO LIVINIA AVENUE  
SHEET 7 OF 10  
CITY DRAWING NUMBER D-13754