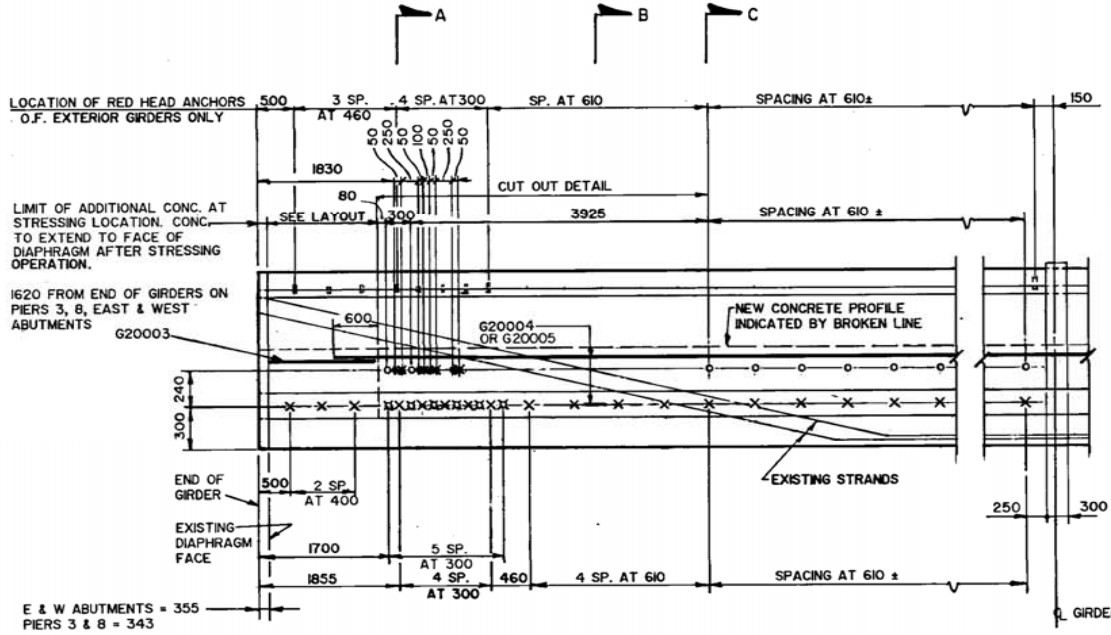
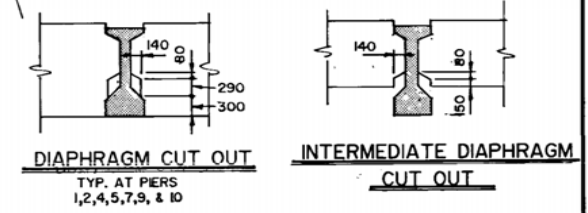
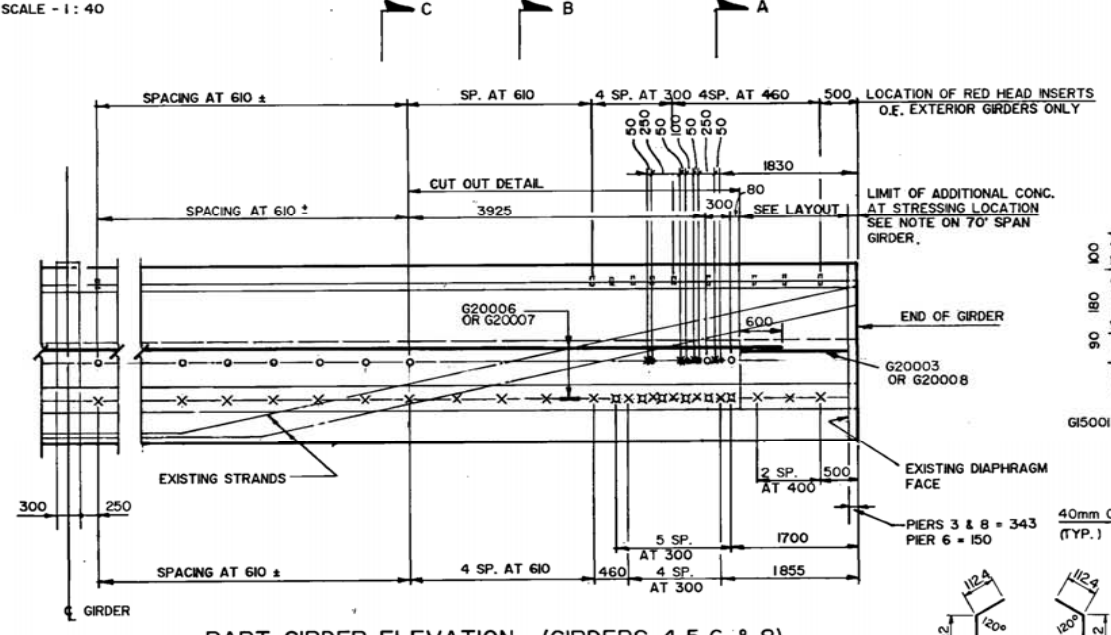


- LEGEND**
- — 60mm DIA. HOLES
 - ⊗ — 50mm DIA. HOLES
 - — "RED HEAD" SELF-DRILL INSERTS NORTH FACE 1/2" x 150 LONG STEEL BOLTS
 - ⊗ — "RED HEAD" SELF-DRILL INSERTS SOUTH FACE 1/2" x 150 LONG STEEL BOLTS
 - ⊗ — "RED HEAD" SELF-DRILL INSERTS NORTH & SOUTH FACE

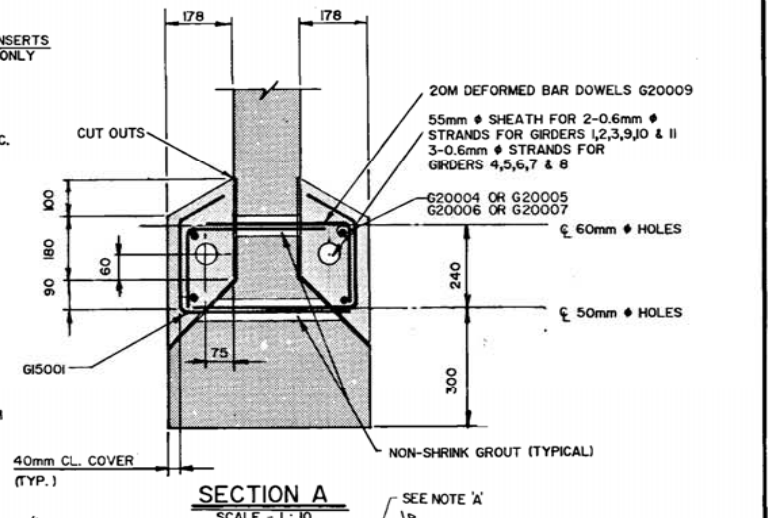
GIRDER LAYOUT
SCALE - 1 : 40



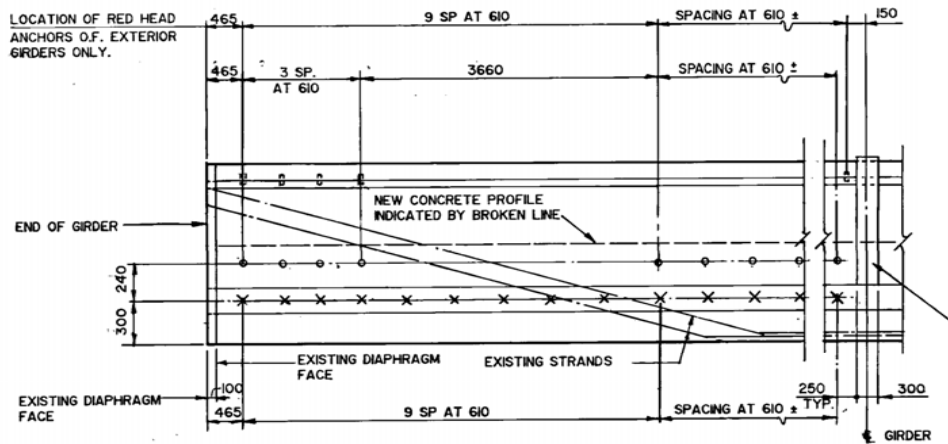
PART GIRDER ELEVATION - (GIRDERS 1,3,9 & 11)
STRESSING ENDS ONLY
SCALE - HORIZ. 1 : 50, VERT. 1 : 25



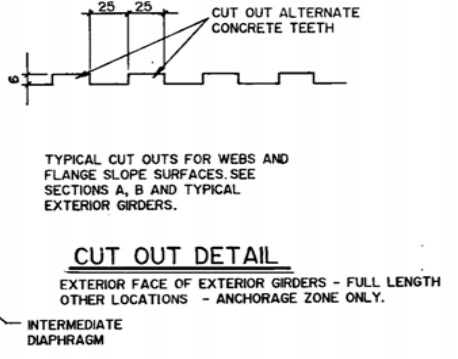
PART GIRDER ELEVATION - (GIRDERS 4,5,6, & 8)
STRESSING ENDS ONLY
SCALE - HORIZ. 1 : 50, VERT. 1 : 25



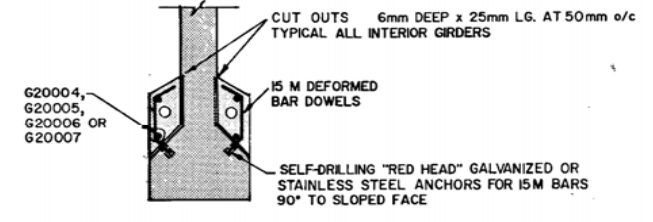
SECTION A
SCALE - 1 : 10



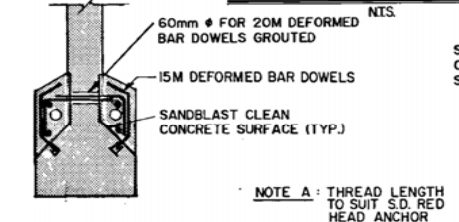
PART GIRDER ELEVATION (NON-STRESSING END)
TYPICAL
SCALE - HOR. 1 : 50
VERT. 1 : 25



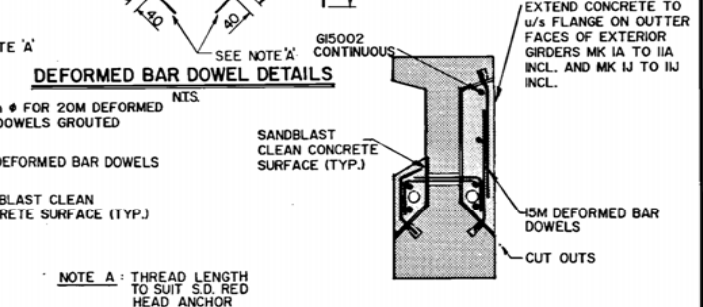
CUT OUT DETAIL
EXTERIOR FACE OF EXTERIOR GIRDERS - FULL LENGTH
OTHER LOCATIONS - ANCHORAGE ZONE ONLY.
INTERMEDIATE DIAPHRAGM



SECTION B
SCALE - 1 : 20



SECTION C
SCALE - 1 : 20



DEFORMED BAR DOWEL DETAILS

TYPICAL SECTION FOR EXTERIOR GIRDERS B-5573 METRIC

RECORD DRAWING

THIS DRAWING TO BE READ IN CONJUNCTION WITH DWG. B121-85-08

REVISIONS NO. DATE APP.	RECORD DRAWING NOV. 86		the uma group Underwood McLellan Ltd. Consulting Engineers and Planners	THE CITY OF WINNIPEG WORKS & OPERATIONS DIVISION STREETS & TRANSPORTATION DEPARTMENT	NAIN AVENUE OVERPASS DECK REHABILITATION, STRUCTURAL STRENGTHENING AND RELATED WORKS GIRDER STRENGTHENING - I	
	DESIGNED BY: G.T./K.U.					DRAWN BY: BH
	CHECKED BY: J.T.					DATE: APRIL 1985 JOB NO. 0265-216-01
	APPROVED BY: 					DATE: June 14/84
AUTHORIZED BY: 1985-04-16 STREETS & BRIDGES ENGINEER		ACCEPTED BY: 85-04-16 BRIDGE ENGINEER		SCALE: AS NOTED DRAWING NO B121-85-07		