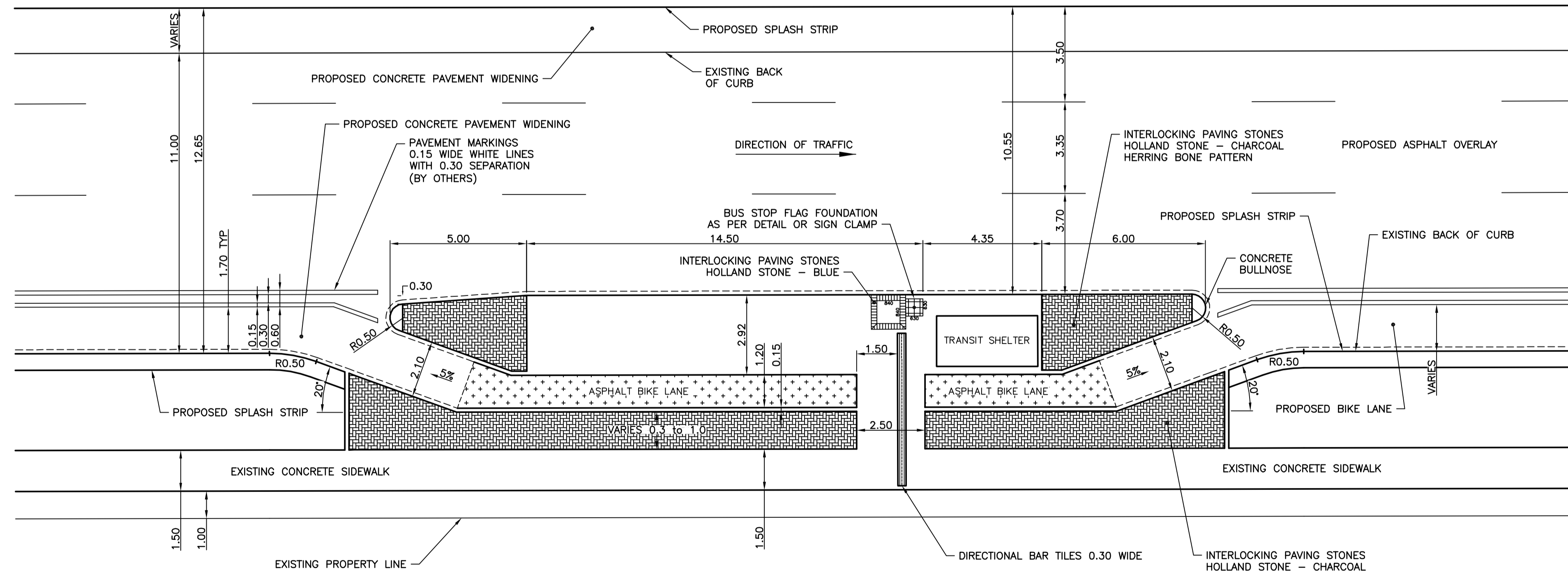


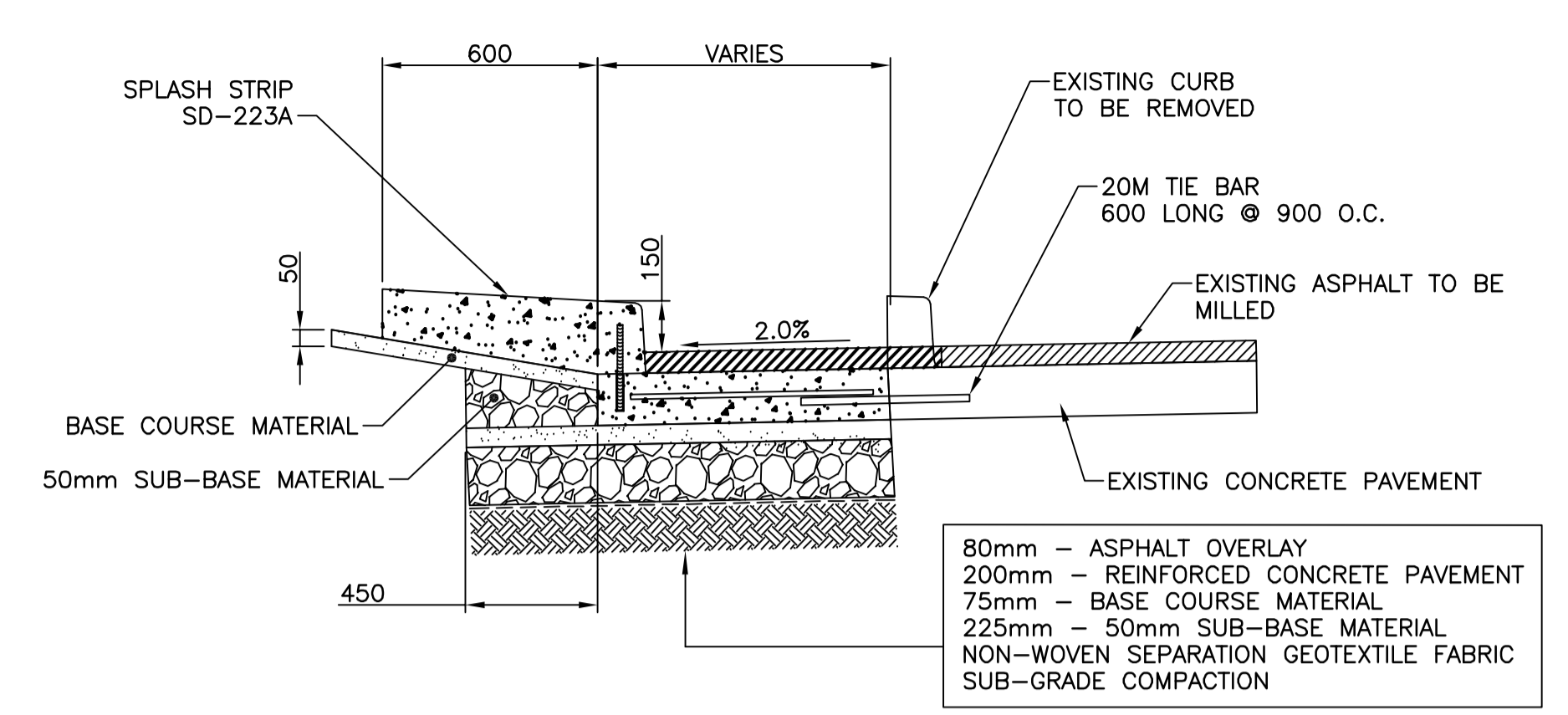
DETAIL A: BUS STOP BOARDING PLATFORM WITH SHELTER

N.T.S.



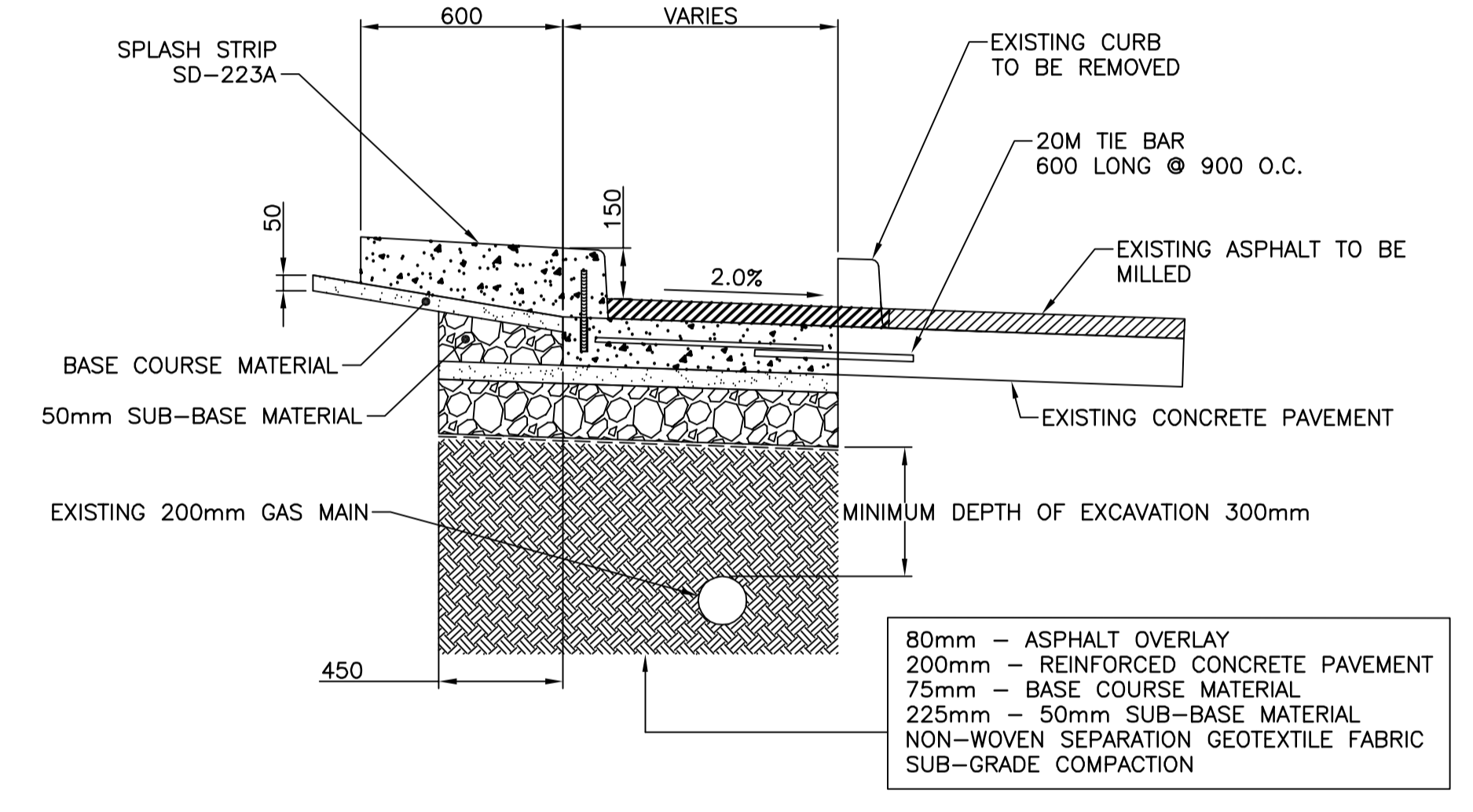
DETAIL B: BUS STOP BOARDING PLATFORM WITH SHELTER

N.T.S.



GUTTER LANE PAVEMENT WIDENING (REF. SD-208) TYPICAL CROSS SECTION

N.T.S.



MEDIAN LANE PAVEMENT WIDENING (REF. SD-208) TYPICAL CROSS SECTION

N.T.S.

PRELIMINARY
NOT TO BE USED FOR CONSTRUCTION

- CONSTRUCTION NOTES**
- 1) CURB REPLACEMENT AS DIRECTED BY THE CONTRACT ADMINISTRATOR.
 - 2) ALL STREET RADIUS CURB UNDER 15M RADIUS SHALL BE REPLACED AS MODIFIED OR AS DIRECTED BY THE CONTRACT ADMINISTRATOR.
 - 3) PAVEMENT REPAIRS SHOWN ARE ONLY A REPRESENTATIVE SAMPLE OF THE TENDERED QUANTITIES.
 - 4) ASPHALT TIE-INS ON APPROACHES TO BE DETERMINED IN THE FIELD BY THE CONTRACT ADMINISTRATOR.
 - 5) ALL BULLNOSES TO HAVE SLOPED FACE.

WARNING

IF POWER EQUIPMENT OR EXPLOSIVES ARE TO BE USED FOR EXCAVATION ON THIS PROJECT THE CONTRACTOR MUST:

- 1) OBTAIN CLEARANCE FROM THE GAS UTILITY PRIOR TO EXCAVATION.
- 2) TAKE PRECAUTION TO AVOID DAMAGE TO GAS UTILITY INSTALLATIONS.

SEE PROVINCIAL REGULATION 210/72 FOR DETAILS

EXISTING	LEGEND - PLAN	PROPOSED	EXISTING	LEGEND - PLAN	PROPOSED	EXISTING	LEGEND - PROFILE	PROPOSED
⊕	HYDRANT	⊕	---	LDS/WWS	---	---	SOUTHBOUND GUTTER	---
⊙	VALVE	⊙	---	WATERMAIN	---	---	SOUTHBOUND MEDIAN	---
⊗	CURB STOP	⊗	---	GAS	---	---	S/B PROPERTY LINE	---
▬	CONCRETE SIDEWALK	▬	---	TRAFFIC SIGNALS	---			
○	O.L.S.	○	---	CONCRETE	---			
○	MANHOLE	○	---	CURB RENEWAL	---			
□	CATCH BASIN	□	231.000	ELEVATIONS	[231.000]			
△	CURB INLET	△	---	PROPERTY LINE	---			
○	PEDESTRIAN CROSSING SIGNAL	○	---	SURVEY BAR	---			
☆	HYDRO POLE	☆	---	GEODETIC BENCH MARK	---			
○	TRAFFIC SIGNAL POLE	○	---	RAMP CURB	---			

LOCATION APPROVED UNDERGROUND STRUCTURES

DATE: _____

NOTE:
LOCATION OF UNDERGROUND STRUCTURES AS SHOWN ARE BASED ON THE BEST INFORMATION AVAILABLE. BUT NO GUARANTEE IS GIVEN THAT ALL EXISTING UTILITIES ARE SHOWN OR THAT THE GIVEN LOCATIONS ARE EXACT. CONFIRMATION OF EXISTENCE AND EXACT LOCATION OF ALL SERVICES MUST BE OBTAINED FROM THE INDIVIDUAL UTILITIES BEFORE PROCEEDING WITH CONSTRUCTION.

B.M. 1B @ S/E CORN. OF PEMBINA HWY & KILLARNEY AVE. ELEV. 231.834

NO.	REVISIONS	DATE	BY
2.	SUBMIT FOR ENGINEERS REVIEW	15/02/06	E.H.
1.	SUBMIT FOR PLAN APPROVAL	14/12/05	E.H.

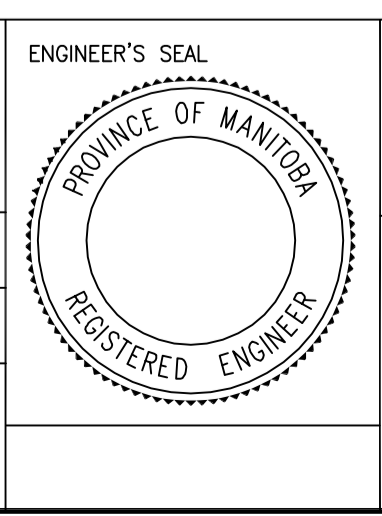
**ENGINEERING DIVISION
TECHNOLOGY SERVICES BRANCH
106 - 1155 PACIFIC AVE**

DESIGNED BY: E.H. CHECKED BY: D.T./ A.P.

DRAWN BY: E.H. APPROVED BY:

HOR. SCALE: NTS
VERTICAL: 1 : 10

DATE: 2015/03/10



**THE CITY OF WINNIPEG
PUBLIC WORKS DEPARTMENT**

PEMBINA HIGHWAY

FROM KIRKBRIDGE DRIVE TO BAIRDMORE BOULEVARD NORTH LEG
REHABILITATION / ACTIVE TRANSPORTATION CORRIDOR
AND ASSOCIATED WORKS
MISCELLANEOUS DETAILS 1 OF 2

CITY DRAWING NUMBER
P-3462-08
SHEET 8 OF 10

8

BID OPPORTUNITY NO. 2-2015

METRIC
WHOLE NUMBERS INDICATE MILLIMETRES
DECIMALIZED NUMBERS INDICATE METRES