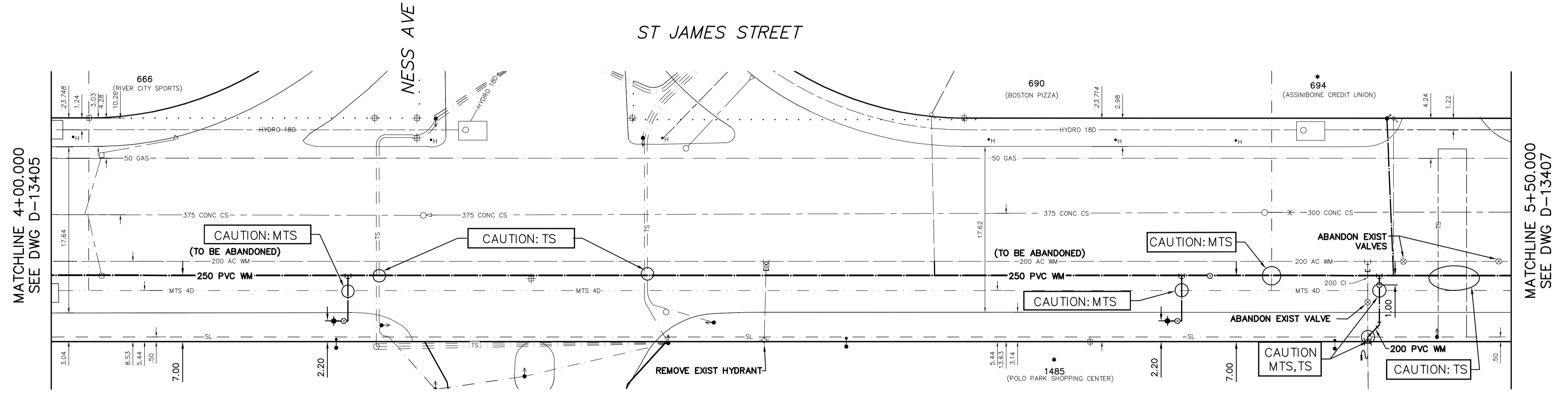
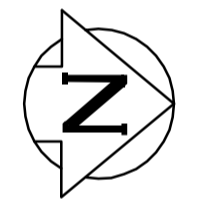


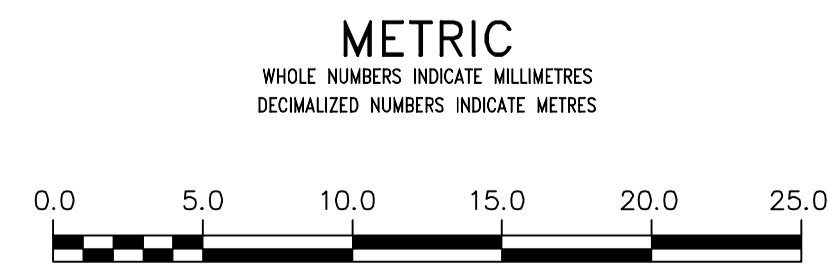
NOTE: CHAINAGES SHOWN ARE ALONG E. P.L. OF ST JAMES STREET



MATCHLINE 4+00.000  
SEE DWG D-13405

MATCHLINE 5+50.000  
SEE DWG D-13407

FOR INDEX SEE D-13403  
FOR WATER SERVICE TABLE SEE DWG D-13408  
VALVES COUNTER-CLOCKWISE TO CLOSE (RED OPERATING NUT)



**WARNING**  
IF POWER EQUIPMENT OR EXPLOSIVES ARE TO BE USED FOR EXCAVATION ON THIS PROJECT THE CONTRACTOR MUST:  
1) NOTIFY THE GAS COMPANY OF THE PROPOSED LOCATION OF EXCAVATION.  
2) TAKE PRECAUTION TO AVOID DAMAGE TO GAS COMPANY INSTALLATIONS.  
SEE PROVINCIAL REGULATION 21072 FOR DETAILS

**LOCATION APPROVED UNDERGROUND STRUCTURES**  
SUPV. U/G STRUCTURES COMMITTEE DATE  
NOTE:  
LOCATION OF UNDERGROUND STRUCTURES AS SHOWN ARE BASED ON THE BEST INFORMATION AVAILABLE BUT NO GUARANTEE IS GIVEN THAT ALL EXISTING UTILITIES ARE SHOWN OR THAT THE GIVEN LOCATIONS ARE EXACT. CONFIRMATION OF EXISTENCE AND EXACT LOCATION OF ALL SERVICES MUST BE OBTAINED FROM THE INDIVIDUAL UTILITIES BEFORE PROCEEDING WITH CONSTRUCTION.

B.M. ELEV.	
CONSTRUCTION COMPLETION DATE: YYYY MM DD	
DESIGNED BY	LKC
CHECKED BY	SC
DRAWN BY	RS
APPROVED BY	KZ
SCALE:	
HORIZONTAL	1:250
VERTICAL	1:50
DATE	2015 05 13
RELEASED FOR CONSTRUCTION	
DATE	
NO.	REVISIONS
DATE	BY
PLOT DATE: 2015 05 13	

ENGINEER'S SEAL  
**ORIGINAL SIGNED BY S.J.R. COURNOYER 15/05/13**  
CONSULTANT DRAWING NUMBER

**THE CITY OF WINNIPEG**  
WATER AND WASTE DEPARTMENT  
ENGINEERING DIVISION  
2015 WATERMAIN RENEWALS  
**ST JAMES STREET**  
39 S OF NESS AVENUE (P) TO  
93 N OF NESS AVE (N P)  
SHEET 4 OF 7  
CITY DRAWING NUMBER  
D-13406