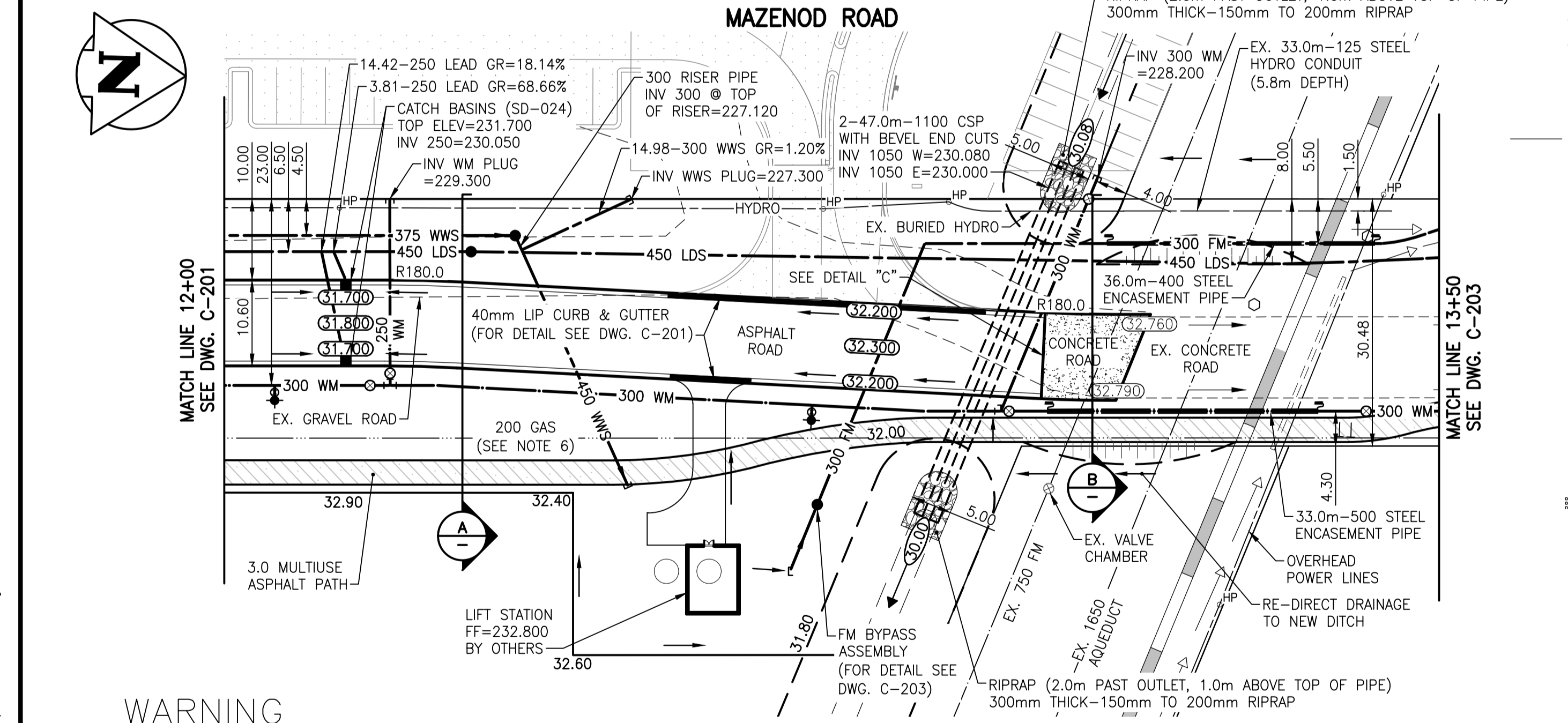


- NOTES:**
- ALL INTERSECTION RADIUS ARE 7.50m AND ALL LANE RADIUS ARE 4.50m UNLESS NOTED OTHERWISE.
  - CHAINAGES SHOWN ARE ALONG CENTERLINE OF ROAD.
  - SUBDRAINS 180.0m EACH SIDE OF CATCH BASINS (SD-245).
  - ALL PIPE UNDER EXISTING AND FUTURE PAVEMENT ARE INSTALLED BY TRENCHLESS METHODS.
  - ALL LONG ASSEMBLY HYDRANTS (SD-006) ALL SHORT ASSEMBLY HYDRANTS (SD-007).
  - THE 200 GAS MAIN SHOWN IS THE PROPOSED MAIN TO BE INSTALLED IN APPROXIMATELY LATE JUNE 2016 BY MANITOBA HYDRO.
  - CONTACT THE WATER AND WASTE DEPARTMENT'S CONSTRUCTION SERVICES COORDINATOR AT 204-986-4289, 7 DAYS PRIOR TO THE COMMENCEMENT OF CONSTRUCTION THROUGH THE AQUEDUCT & FEEDERMAIN PROPERTY TO ARRANGE FOR AN INSPECTION.
  - PRIOR TO ANY CONSTRUCTION, THE AQUEDUCT AND FEEDERMAIN MUST BE EXPOSED BY A SOFT DIG METHOD SO AS TO CONFIRM DEPTH AND LOCATION. A MINIMUM CLEARANCE OF 1.0m MUST BE PROVIDED BETWEEN THE UNDERSIDE OF AQUEDUCT OR FEEDERMAIN AND THE TOP OF THE PROPOSED WORKS.
  - A MINIMUM CLEARANCE OF 0.5m MUST BE PROVIDED BETWEEN THE UNDERSIDE OF THE PROPOSED WORKS AND THE TOP OF ANY EXISTING AQUEDUCT OR FEEDERMAIN BY TRENCHLESS OR OPEN TRENCH.
  - A SHAFT MUST BE EXCAVATED BY SOFT DIG METHODS 4.0m FROM THE CENTERLINE OF THE AQUEDUCT AND/OR FEEDERMAIN TO CONFIRM THE ALIGNMENT AND ELEVATION OF THE DRILLING ROD BEFORE IT CROSSES OVER OR UNDER THE AQUEDUCT AND/OR FEEDERMAIN. THIS CONFIRMATION MUST BE WITNESSED BY A CITY REPRESENTATIVE.
  - DO NOT OPERATE VIBRATORY EQUIPMENT OVER OR WITHIN 3.0m OF THE AQUEDUCT AND FEEDERMAIN CENTERLINE.
  - INSTALLATION EQUIPMENT SHALL NOT CROSS OR TRAVEL ALONG EITHER SIDE OF THE AQUEDUCT AND FEEDERMAIN WITHIN A LATERAL DISTANCE OF 5.0m FROM THE CENTERLINE OF THE AQUEDUCT AND/OR FEEDERMAIN.
  - INSTALL WEST HALF OF CONCRETE ROAD ON A SATURDAY WITH 24 HR CONCRETE TO AVOID DISRUPTION TO PARMALAT ACCESS. THEN ADJUST TEMPORARY PARMALAT GRAVEL ACCESS AVOIDING 750 FM. PLACE TEMPORARY ASPHALT AT CURB IF REQUIRED.
  - INSTALL VERTICAL BENDS AND REINFORCE IN ACCORDANCE WITH CW 2110 R11 AND SD-005.

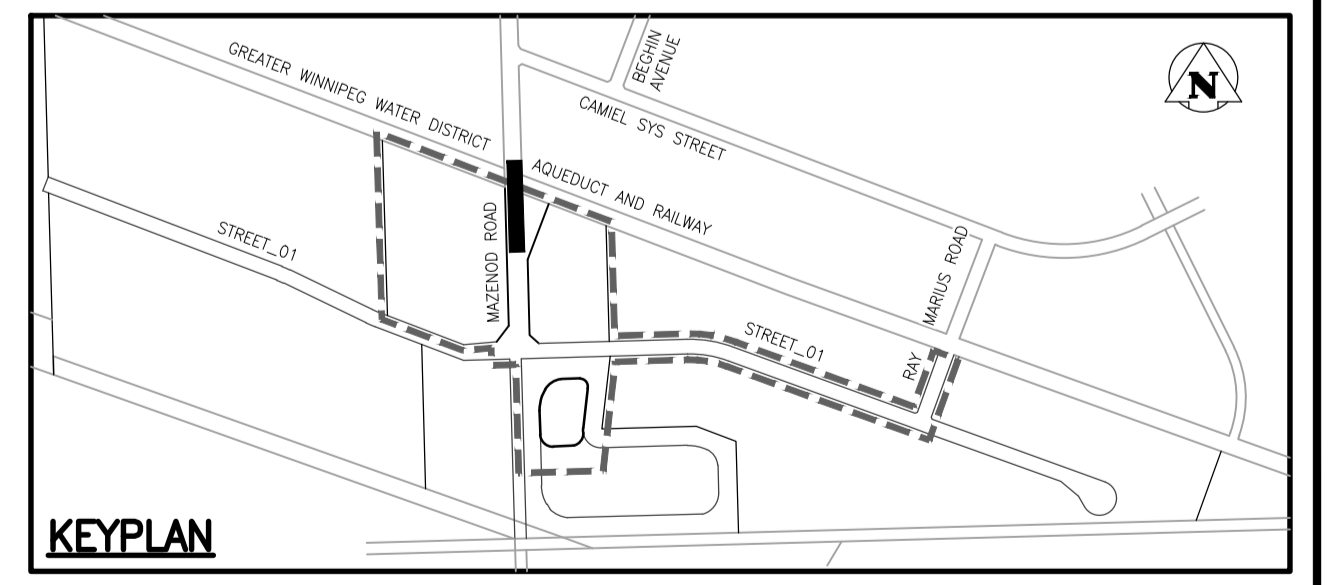
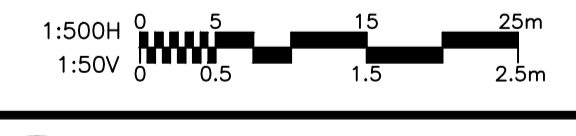


**WARNING**  
IF POWER EQUIPMENT OR EXPLOSIVES ARE TO BE USED FOR EXCAVATION ON THIS PROJECT THE CONTRACTOR MUST:  
1) NOTIFY THE GAS COMPANY OF THE PROPOSED LOCATION OF EXCAVATION.  
2) TAKE PRECAUTION TO AVOID DAMAGE TO GAS COMPANY INSTALLATIONS.  
SEE PROVINCIAL REGULATION 140/92 FOR DETAILS

**METRIC**  
WHOLE NUMBERS INDICATE MILLIMETRES  
DECIMALIZED NUMBERS INDICATE METRES

**APEGM**  
Certificate of Authorization  
Stantec Consulting Ltd.  
No. 1301

BENCHMARK: N.W. Cor. of Mazenod Rd. & G.W.W.D. R.O.W., 19 mm dia. x 4.6 m l.B. in Valve Box, 3.0 m W. of W.L. of Mazenod Rd. & 4.0 m N. of N. rail of tracks in G.W. W.D. R.O.W.



| 150 WM      | 150 WM              | HYDRO          | WATERMAIN      | 150 WM         | WATERMAIN           | 150 WM      |
|-------------|---------------------|----------------|----------------|----------------|---------------------|-------------|
| HYDRANT     | HYDRANT             | M.T.S.         | CONCRETE       | 300 LDS        | HYDRANT, VALVE      | 300 LDS     |
| VALVE       | VALVE               | CONCRETE       | ASPHALT        | 250 WWS        | LAND DRAINAGE SEWER | 300 LDS     |
| 300 LDS     | LAND DRAINAGE SEWER | ASPHALT        | SIDEWALK       | PROPERTY LINE  | WASTE WATER SEWER   | 250 WWS     |
| 250 WWS     | WASTE WATER SEWER   | SIDEWALK       | PROPERTY LINE  | SURVEY BAR     | MANHOLE             | MANHOLE     |
| MANHOLE     | MANHOLE             | PROPERTY LINE  | SURVEY BAR     | DITCH          | CATCH BASIN         | CATCH BASIN |
| CATCH BASIN | CATCH BASIN         | SURVEY BAR     | DITCH          | ROAD ELEVATION | CURB INLET          | CURB INLET  |
| CURB INLET  | CURB INLET          | ROAD ELEVATION | ROAD ELEVATION | LEGEND-PLAN    | JUNCTIONS           | JUNCTIONS   |
| JUNCTIONS   | JUNCTIONS           | LEGEND-PLAN    | LEGEND-PROFILE | PROPOSED       | CULVERT             | CULVERT     |
| CULVERT     | CULVERT             | PROPOSED       | PROPOSED       | EXISTING       | GAS                 | GAS         |
| EXISTING    | LEGEND-PLAN         | PROPOSED       | LEGEND-PLAN    | PROPOSED       | LEGEND-PLAN         | PROPOSED    |
| LEGEND-PLAN | PROPOSED            | LEGEND-PROFILE | PROPOSED       | EXISTING       | PROPOSED            | PROPOSED    |

**LOCATION APPROVED UNDERGROUND STRUCTURES**

B.M. 32-005  
ELEV. 231.677

| NO. | REVISIONS                 | YY.MM.DD | BY     | DATE | SCALE                      |
|-----|---------------------------|----------|--------|------|----------------------------|
| 2   | ISSUED FOR CONSTRUCTION   | 16.01.04 | P.J.S. |      | HOR. SCALE: 1:500          |
| 1   | SUBMITTED FOR CITY REVIEW | 15.11.19 | P.J.S. |      | VERTICAL: 1:50             |
|     |                           |          |        |      | RELEASED FOR CONSTRUCTION: |
|     |                           |          |        |      | DATE                       |

**Stantec**  
500 - 311 Portage Avenue, Winnipeg MB Canada R3B 2B9  
Tel. 204.489.5900 Fax. 204.453.9012 www.stantec.com

DESIGNED BY: P.J.S. CHECKED BY: D.P.M.  
DRAWN BY: L.D. APPROVED BY: P.J.S.

ENGINEER'S SEAL: P.J. SUNDERLAND  
REGISTERED PROFESSIONAL ENGINEER

CONSULTANT DRAWING NO. C-202

**THE CITY OF WINNIPEG**  
Winnipeg

ST. BONIFACE INDUSTRIAL PARK - PHASE 2 - STAGE 1 7 OF 15

**MAZENOD ROAD**  
175m N OF STREET\_01 TO  
325m N OF STREET\_01

SHEET OF 15  
CAD FILE DRAWING NUMBER 09351C-201-846.DWG  
CITY DRAWING NUMBER