

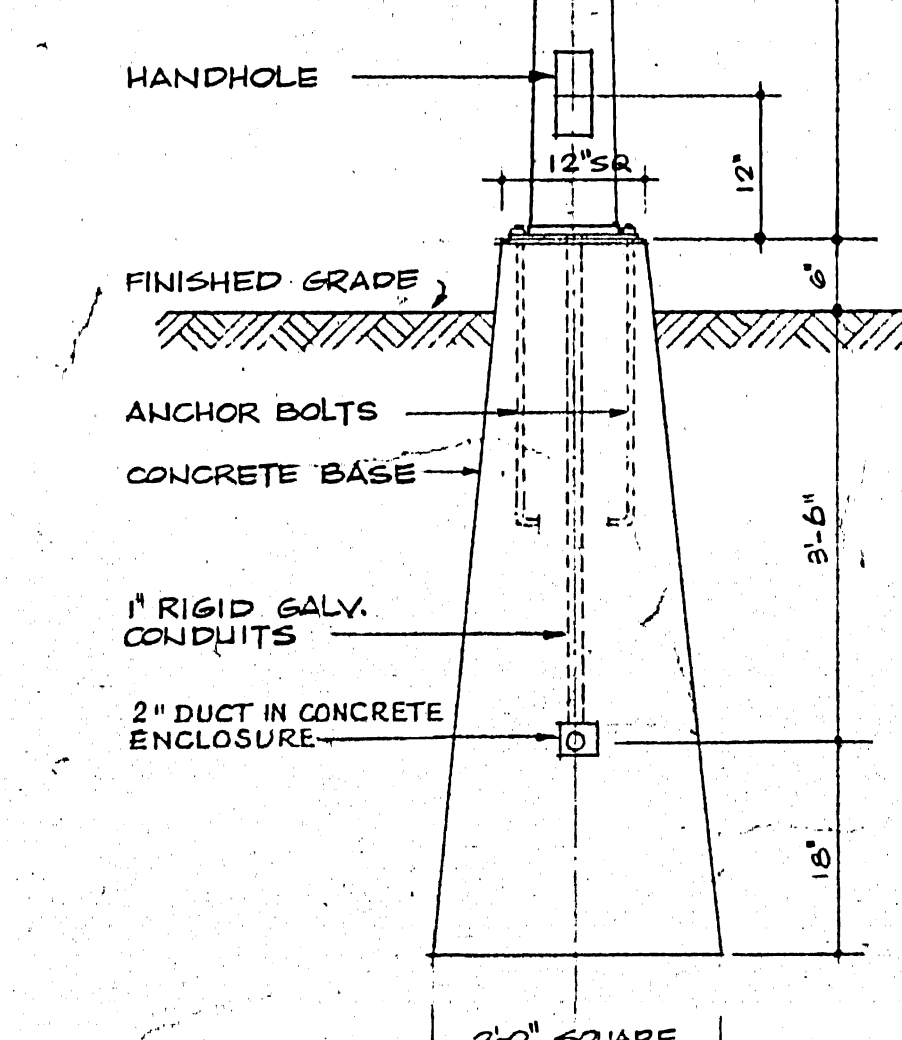
LEGEND

- ⊠ FLUORESCENT LIGHTING FIXTURE, CEILING MOUNTED, TYPE 'A' CONDUIT TO LIGHTING PANEL, 12" CIRCUIT #7
- ⊠ FLUORESCENT LIGHTING FIXTURE, USED AS NIGHT LIGHT
- ⊠ FLUORESCENT LIGHTING FIXTURE, BRACKET TYPE
- OUTLET BOX
- ⊙ INCANDESCENT OR MERCURY VAPOUR LIGHTING FIXTURE
- ⊙ INCANDESCENT OR MERCURY VAPOUR LIGHTING FIXTURE, BRACKET TYPE
- ⊙ EXIT LIGHT
- ⊙ 3-WAY SWITCH
- ⊙ SWITCH WITH PILOT LIGHT
- ⊙ SINGLE POLE SWITCH
- ⊙ DUPLEX RECEPTACLE
- ⊙ DUPLEX RECEPTACLE MOUNTED ABOVE COUNTER TOP
- ⊙ DUPLEX RECEPTACLE, EXPL. PROF., 20 A, 125 V, GROUSE WINDS \*CPS 152-212
- ⊙ WELDING RECEPTACLE 100A, 3PH, 4W, 208V TO MATCH EQUIP.
- ⊙ DUPLEX RECEPTACLE, 208V, 15 A HUBBELL # 5662
- ⊙ WATER CLOCK MOUNTED 12" ABOVE FINISHED FLOOR IN GARAGE OVERHAUL & REPAIR SHOP AS NOTED IN OFFICE
- ⊙ BUILDING UNLESS OTHERWISE NOTED
- ⊙ FLOOR RECEPTACLE, HUBBELL # 5261 IN NEPCO 800 BOX
- ⊙ SHAVING OUTLET, MOUNTED 3'-6" ABOVE FINISHED FLOOR
- ⊙ TELEPHONE WALL MOUNTED OUTLET
- ⊙ PA MICROPHONE
- ⊙ PA HORN SINGLE PROJECTION MOUNTED APPROX. 15'-0" ABOVE FINISHED FLOOR
- ⊙ PA HORN DOUBLE PROJECTION MOUNTED APPROX. 15'-0" ABOVE FINISHED FLOOR UNLESS OTHERWISE NOTED
- ⊙ FIRE ALARM MANUAL STATION
- ⊙ FIRE ALARM BELL 10" DIA. OR AS NOTED
- ⊙ FIRE ALARM HORN DOUBLE PROJECTION
- ⊙ 150W COMBINATION TYPE FA DETECTOR
- ⊙ 150W FIXED TYPE FA DETECTOR
- ⊙ DISCONNECT SWITCH
- ⊙ MANUAL STARTER
- ⊙ MAGNETIC STARTER
- ⊙ COMBINATION MAGNETIC STARTER
- ⊙ SINGLE PHASE MOTOR
- ⊙ 3 PHASE MOTOR
- ⊙ REMOTE PUSHBUTTON
- ⊙ THERMOSTAT
- ⊙ EMERGENCY LIGHTING UNIT MOUNTED 7'-0" ABOVE FINISHED FLOOR UNLESS OTHERWISE NOTED
- ⊙ LIGHTING PANEL
- ⊙ POWER PANEL
- ⊙ UNDER FLOOR DUCT
- ⊙ CONDUIT STUBUP
- ⊙ SPRINKLER SYSTEM FLOW SWITCH
- ⊙ SPRINKLER SYSTEM GATE VALVE SUPERVISORY SWITCH
- ⊙ SUPPLIED BY OTHERS
- ⊙ WEATHER PROOF RECEPTACLE FOR CAR BLOCK HEATERS
- ⊙ ELECTRIC HEATER 208V 1PH SUPPLIED AND INSTALLED BY OTHERS
- ⊙ ELECTRIC HEATER 208V 3PH SUPPLIED AND INSTALLED BY OTHERS
- ⊙ WP DENOTES WEATHER PROOF
- ⊙ EXP DENOTES EXPLOSION PROOF
- ⊙ 30" HIGH STANDARD WITH ONE 400W TYPE 'Q' MERCURY VAPOR FLOODLIGHT
- ⊙ INTERCOM SYSTEM MICROPHONE
- ⊙ INTERCOM SYSTEM SPEAKER TALK-BACK STATION (MHS-5) & ASSOCIATED TRUMPET (MHS-15)
- ⊙ OUTLET BOX FOR GAS-FIRED INFRARED HEATER MOUNTED ADJACENT TO HEATER, WIRING & CONNECTION TO HEATERS BY OTHERS
- ⊙ OUTLET BOX FOR 208V CONNECTION TO CARBON MONOXIDE ANALYZER, MTD, 6'-0" ABOVE FINISHED FLOOR
- ⊙ OUTLET BOX FOR 100V CONNECTION TO CARBON MONOXIDE MONITOR, MTD, 6'-0" ABOVE FINISHED FLOOR
- ⊙ FAN COIL UNIT COMPLETE WITH TERMINAL JUNCTION BOX SUPPLIED & INSTALLED BY OTHERS, ELECTRICAL CONTRACTOR SHALL TERMINATE & CONNECT WIRING IN JUNCTION BOX
- ⊙ WP DENOTES WEATHER PROOF
- ⊙ EXP DENOTES EXPLOSION PROOF
- ⊙ UNMOUNTED NUMBER OF WIRES IN CONDUIT EXPOSED IN UNFINISHED AREAS, SEE FINISHED AREAS ABOVE IN FINISHED AREAS, ARROW HEAD DENOTES HOME RUN TO RESP. PANEL, UNMARKED RUNS INDICATE 2 WIRES IN CONDUIT
- ⊙ DENOTES CONDUIT RUN IN SLAB
- ⊙ FIRE ALARM TRIPLE STATION

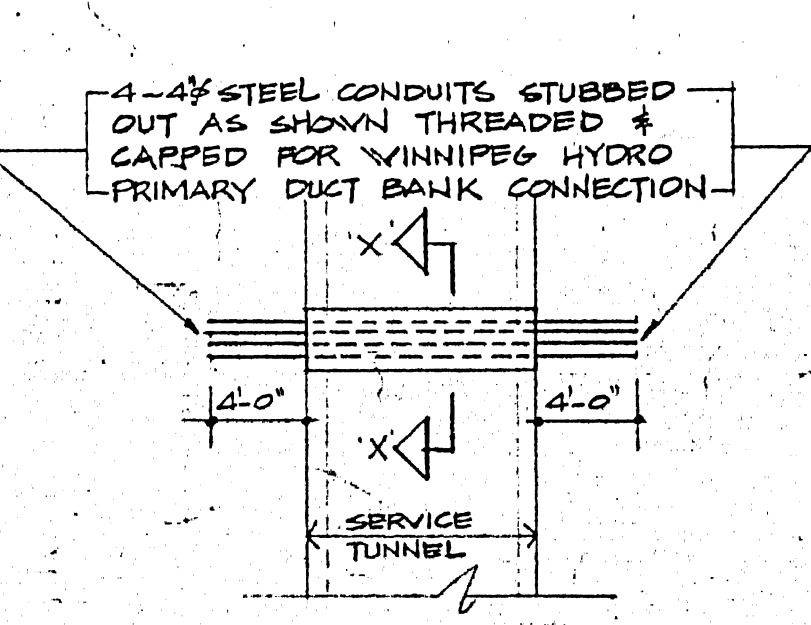
400W TYPE 'Q' MERC. FLOODLIGHT  
GROUSE-HINDS #3AL-4-H-CV-2

BRACKET-GROUSE  
HINDS #ML-3323

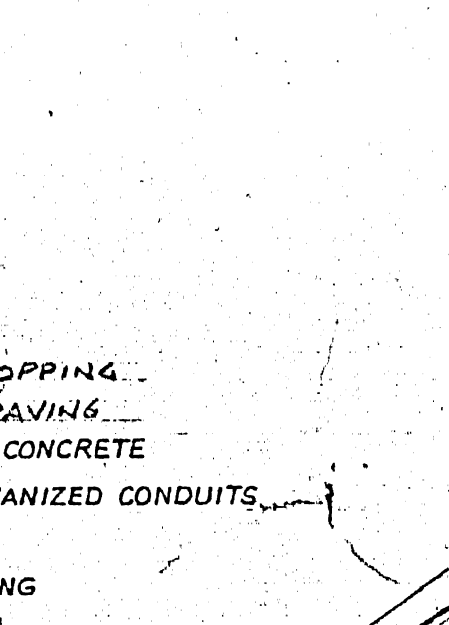
NOTE: FLOODLIGHTS TO BE  
ADJUSTED AT SITE TO  
GIVE THE MOST EVEN  
ILLUMINATION TO THE  
PARKING AREAS AND  
DRIVEWAYS



DETAIL 'B' N.T.S.



DETAIL 'C' N.T.S.

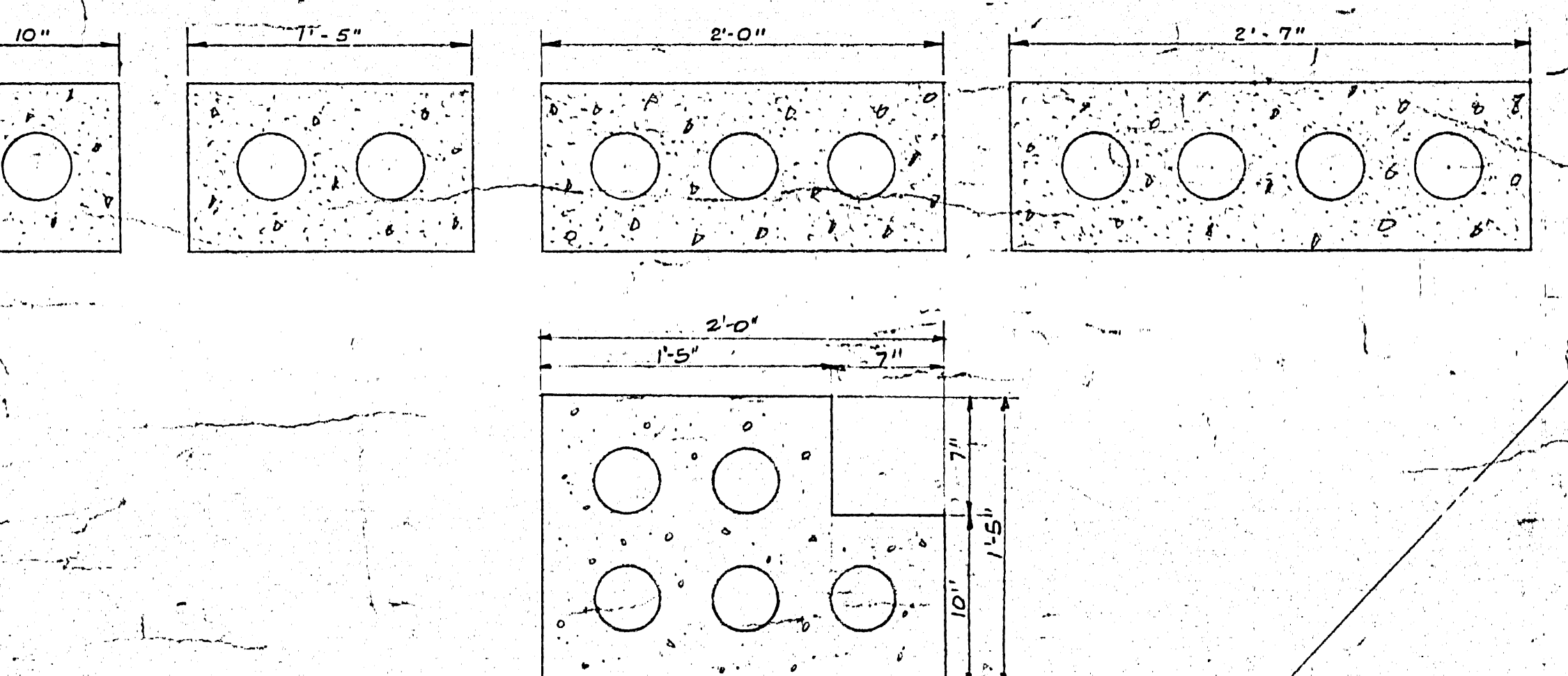


DETAIL 'D' N.T.S.

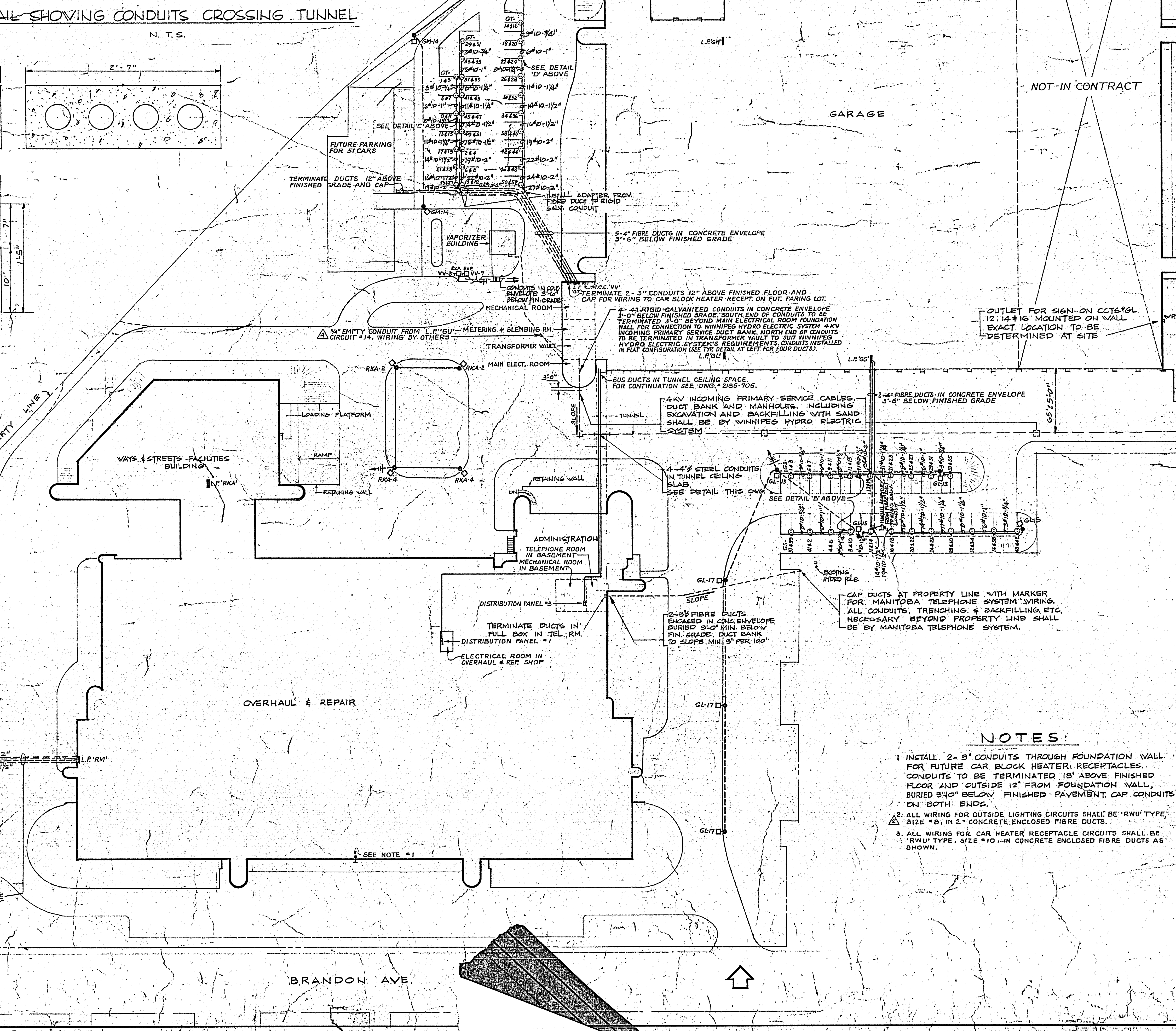


PLAN SECTION X-X

DETAIL SHOWING CONDUITS CROSSING TUNNEL

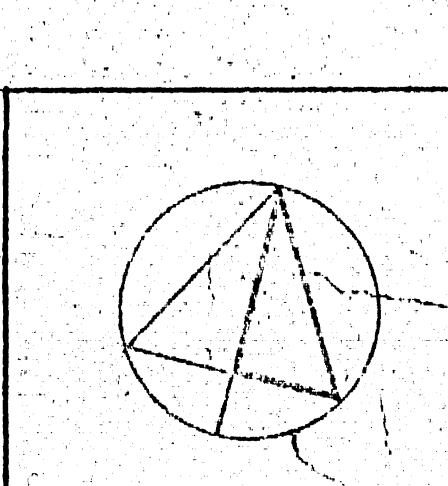


TYPICAL CONCRETE DUCT BANK DETAILS



NOTES:

1. INSTALL 2-3" CONDUITS THROUGH FOUNDATION WALL FOR FUTURE CAR BLOCK HEATER RECEPTACLES. CONDUITS TO BE TERMINATED 18" ABOVE FINISHED FLOOR AND OUTSIDE 12" FROM FOUNDATION WALL, BURIED 3'-0" BELOW FINISHED PAVEMENT. CAP CONDUITS ON BOTH ENDS.
2. ALL WIRING FOR OUTSIDE LIGHTING CIRCUITS SHALL BE 'RWU' TYPE, SIZE #8, IN 2" CONCRETE ENCLOSED FIBRE DUCTS AS SHOWN.
3. ALL WIRING FOR CAR HEATER RECEPTACLE CIRCUITS SHALL BE 'RWU' TYPE, SIZE #10, IN CONCRETE ENCLOSED FIBRE DUCTS AS SHOWN.



NO.	DATE	BY	DESCRIPTION	APPROVED
REV. 0.69			AS BUILT	
REV. 23.68	7		ADDED 4" EMPTY CONDUIT FROM 1" GUY TO VAPORIZER BUILDING	
REV. 21.61	4		SECTION 'X-X' REVISED	
REV. 24.62	5		FIBRE DUCTS FOR OUTSIDE LIGHTING CHANGED TO RT	
REV. 22.68	4		ISSUED FOR CONSTRUCTION	
M/2/68	2		GENERAL REVISIONS	
M/2/68	2		FOR TENDER	
REV. 23.62	1		FOR APPROVAL	

DATE	ISSUE	REV.	DESCRIPTION	DRAWN
ISSUE OR REVISION				
METROPOLITAN CORPORATION OF GREATER WINNIPEG STREETS AND TRANSIT DIVISION				
TRANSIT STORAGE AND SHOP FACILITIES				
SITE PLAN & DETAILS				
CONSULTING PROFESSIONAL ENGINEERS A. D. MARGISON AND ASSOCIATES LIMITED 1155 ELGIN STREET, 2ND FLOOR, WINNIPEG, MANITOBA			ARCHITECTS Waltman Ross & Blankenship Coop Gillmer Hanns 10 DONALD STREET, WINNIPEG, MANITOBA	
APPROVED	DESIGNED BY	DRAWN BY	DATE	
		RT	21 JULY 1957	
	CHECKED	L.G.J.	SCALE	1" = 50' AS NOTED
	FILE NO.		DRAWING NO.	2185-701
	SHEET NO.			ELECTRICAL

2185-701