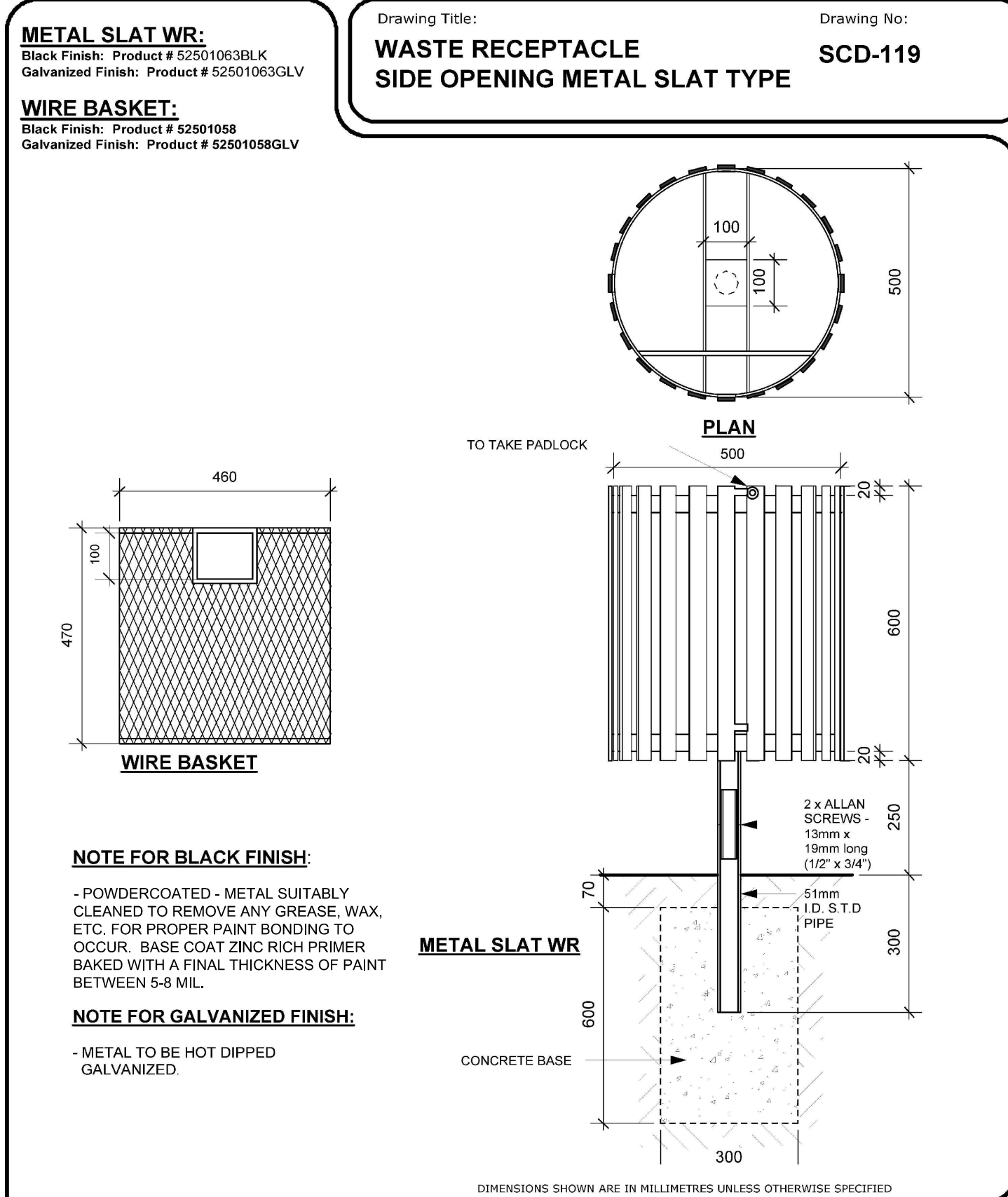


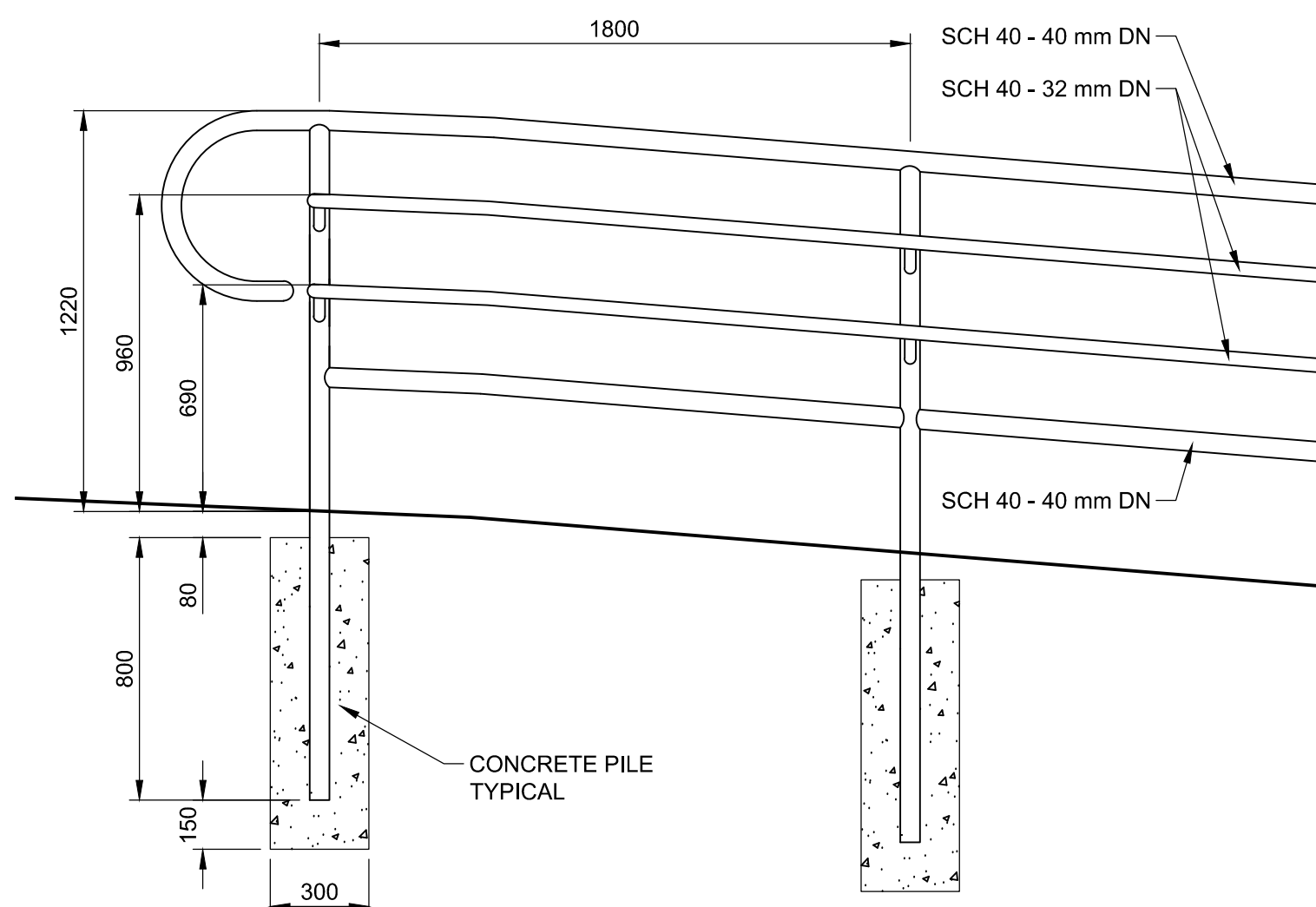
REVISION: 2  
 DATE: December 20, 2012  
 SCALE: NTS  
 DRAWN BY: SP

The City of Winnipeg  
 Planning, Property and Development Department  
 Planning and Land Use Division  
 Unit 15 - 30 Fort Street, Winnipeg, MB, R3C 4X5

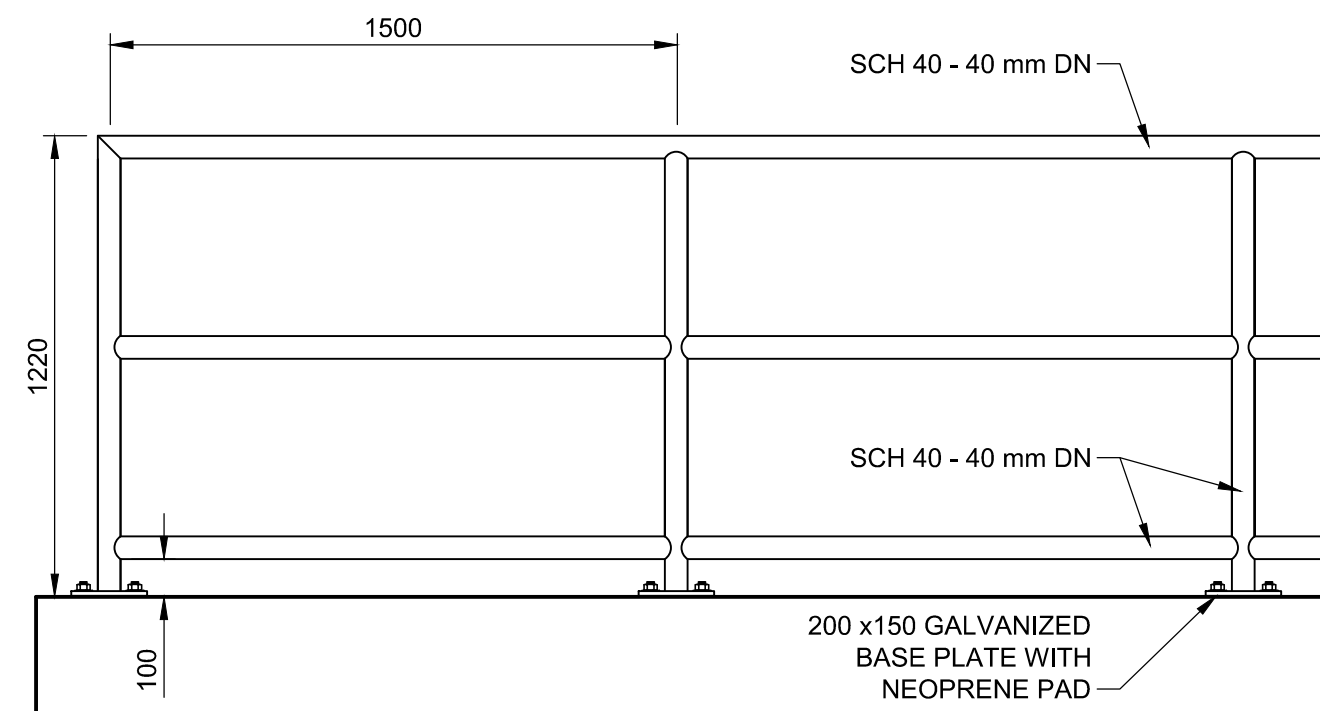


REVISION: 2  
 DATE: December 20, 2012  
 SCALE: N.T.S.  
 DRAWN BY: SP

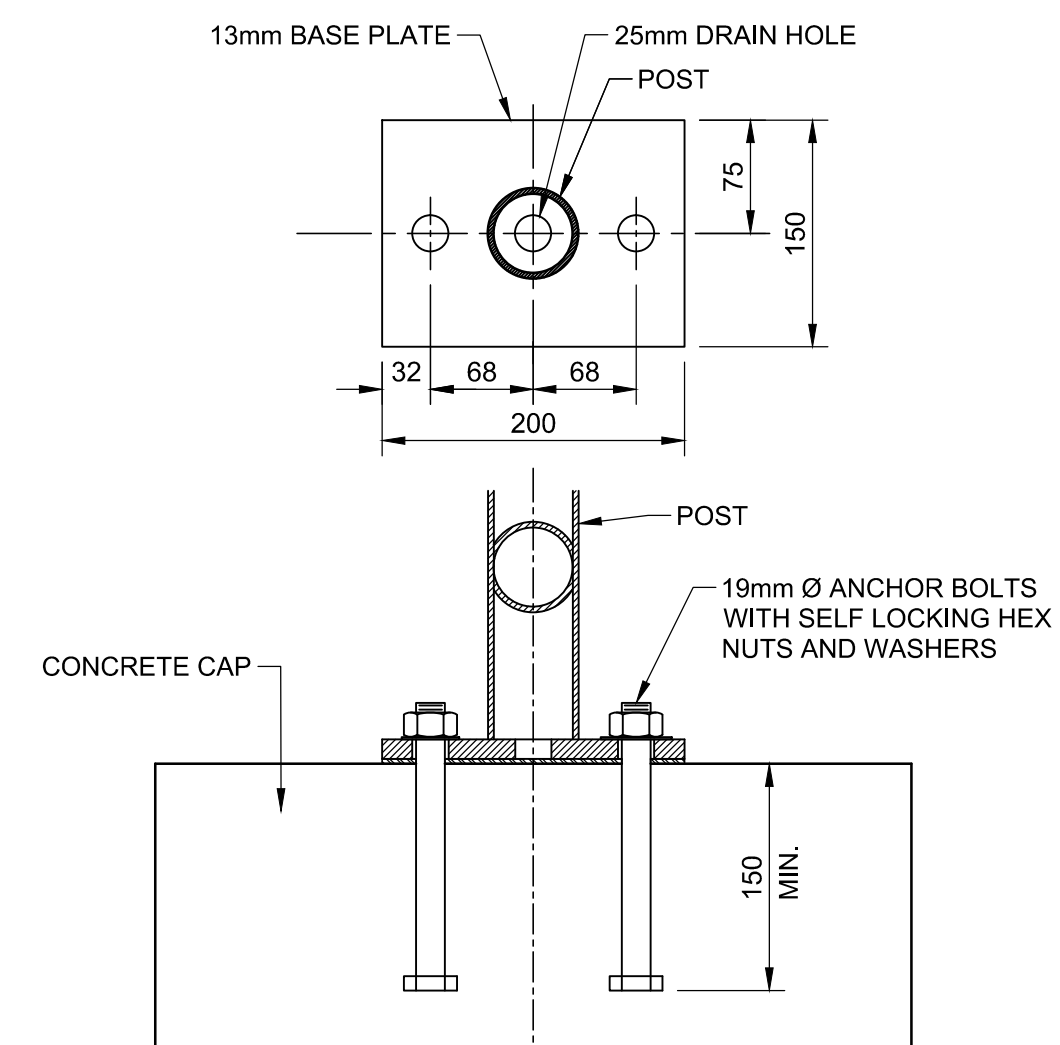
The City of Winnipeg  
 Planning, Property and Development Department  
 Planning and Land Use Division  
 Unit 15 - 30 Fort Street, Winnipeg, MB, R3C 4X5



NOTES:  
 1. POSTS TO BE WELDED TO BASE PLATES  
 2. PLATES TO BE BOLTED TO CONCRETE CAP  
 3. REFER TO DETAIL 2, SHEET B-0001 FOR ANCHORING.

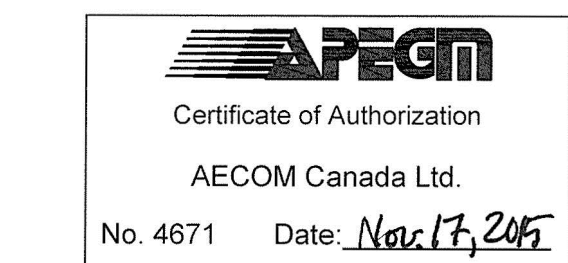


NOTES:  
 1. POSTS TO BE WELDED TO BASE PLATES  
 2. PLATES TO BE BOLTED TO CONCRETE CAP  
 3. REFER TO DETAIL 2, SHEET B-0001 FOR ANCHORING.



NOTES:  
 1. POSTS TO BE WELDED TO BASE PLATES  
 2. PLATES TO BE BOLTED TO CONCRETE CAP  
 3. REFER TO DETAIL 2, SHEET B-0001 FOR CONCRETE CAP  
 4. ANCHOR BOLTS TO BE LOCATED BETWEEN REBAR WITH MINIMUM 50mm CLEARANCE.  
 5. REFER TO WRITTEN SPECIFICATIONS.

WHOLE NUMBERS INDICATE MILLIMETRES (mm).  
 DECIMALIZED NUMBERS INDICATE METRES (m).



**ISSUE/REVISION**

| I/R | DATE       | DESCRIPTION             |
|-----|------------|-------------------------|
| 0   | 2015/11/24 | ISSUED FOR CONSTRUCTION |