

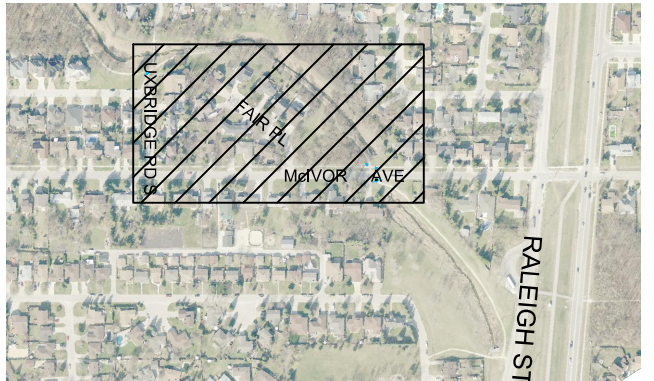
**REGISTRATION**



**ISSUE/REVISION**

I/R	DATE	DESCRIPTION
0	2015/11/24	ISSUED FOR CONSTRUCTION

**KEY PLAN**



**PROJECT NUMBER**

60439880

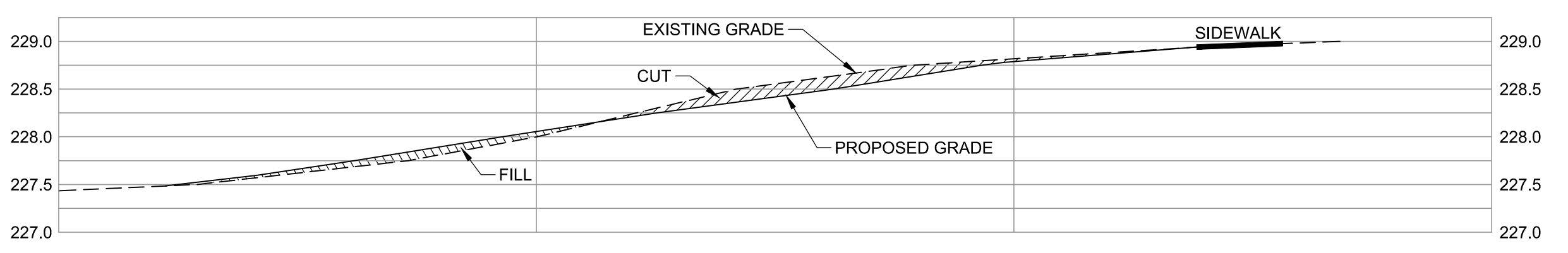
**SHEET TITLE**

LANDSCAPING  
 RADIUM COVE TO McIVOR AVE

**SHEET NUMBER**

L-0001

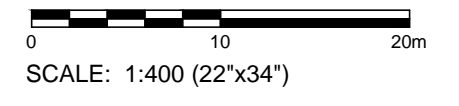
- LEGEND**
- EXISTING GRANULAR PATH
  - NEW ASPHALT PATH - 2400 WIDTH
  - NEW GRANULAR PATH
  - EXISTING GRANULAR PATH TO BE WIDENED / REFURBISHED
  - NEW CONCRETE SLAB
  - HAND RAIL
  - EXISTING SITE AMENITIES
  - NEW BENCH



**ASPHALT PATHWAY AT McIVOR AVE**  
 SECTION F  
 SCALE: NTS

**PATHWAY CONSTRUCTION COORDINATES**

POINT No.	EASTING	NORTHING
PT. 1	639427.929	5534511.516
PT. 2	639461.239	5534507.829
PT. 3	639536.013	5534447.162
PT. 4	639542.476	5534428.726
PT. 5	639552.104	5534397.511
PT. 6	639554.195	5534387.673
PT. 7	639552.207	5534357.415
PT. 8	639559.378	5534333.441
PT. 9	639559.522	5534319.172
PT. 10	639561.481	5534315.789
PT. 11	639563.568	5534313.457
PT. 12	639562.812	5534310.424
PT. 13	639561.993	5534309.166
PT. 14	639559.991	5534306.091



BID OPPORTUNITY NO. 1038-2015

WHOLE NUMBERS INDICATE MILLIMETRES (mm).  
 DECIMALIZED NUMBERS INDICATE METRES (m).

NOTICE:  
 THE EXISTENCE, LOCATION AND ELEVATION OF UTILITIES AND/OR CONCEALED STRUCTURES AT THE PROJECT SITE ARE NOT GUARANTEED BY AECOM.