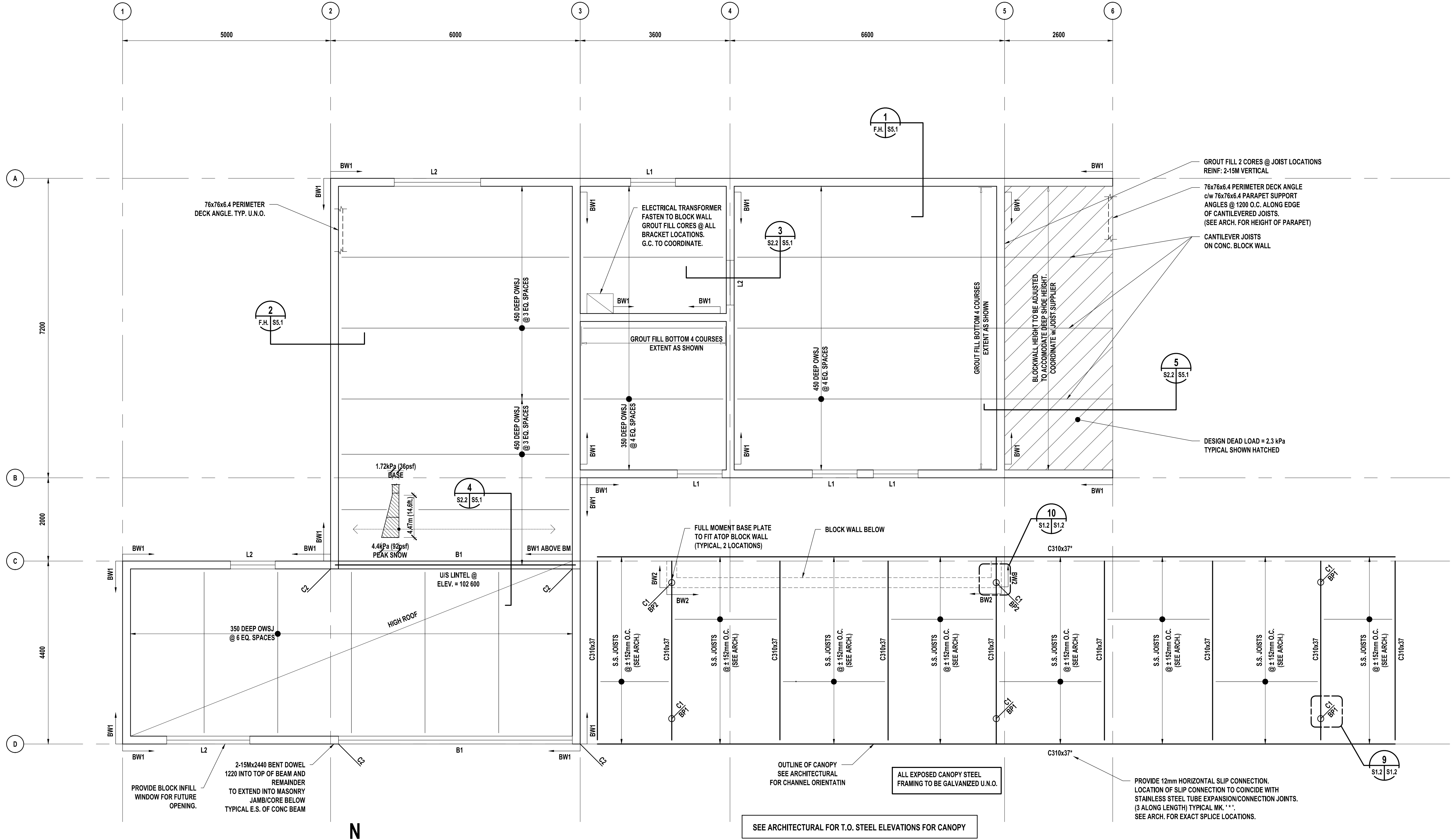


THE CONTRACTOR IS TO VERIFY DIMENSIONS AND DATA NOTED ON THE STRUCTURAL DRAWINGS WITH CONDITIONS ON THE SITE. CO-ORDINATE ALL DIMENSIONS WITH THE ARCHITECTURAL DRAWINGS, AND IS HELD RESPONSIBLE FOR REPORTING ANY DISCREPANCIES TO THE CONTRACT ADMINISTRATOR BEFORE PROCEEDING WITH THE WORK. VARIATIONS AND MODIFICATIONS TO WORK SHOWN ON THE STRUCTURAL DRAWINGS SHALL NOT BE CARRIED OUT WITHOUT WRITTEN PERMISSION FROM THE CONTRACT ADMINISTRATOR. THIS DRAWING IS NOT TO BE SCALED. ALL BEAMS, ANGLES AND MISCELLANEOUS METALS INDICATED ON ARCHITECTURAL, MECHANICAL AND/OR ELECTRICAL DRAWINGS BUT NOT SHOWN OR NOTED ON STRUCTURAL DRAWINGS, SHALL BE INCLUDED IN THE BID PRICE. THE CONTRACTOR IS RESPONSIBLE FOR CONFIRMING SIZES AND LOCATIONS OF THESE MEMBERS PRIOR TO BID OPPORTUNITY CLOSING.



1 ROOF FRAMING PLAN
SCALE 1:50

- ROOF FRAMING PLAN NOTES**
- U/S STEEL DECK ELEVATION 104.100 SHOWN U/N (HIGH ROOF)
103.100 SHOWN U/N (LOW ROOF)
 - DESIGN LIVE LOAD (+ SNOW) = 1.72 kPa
 - DESIGN DEAD LOAD = 1.3 kPa
 - FRAME MECHANICAL OPENINGS OR ACCESS HATCHES WITH 4"x4"x3/8" ANGLE (TYPICAL). CONFIRM LOCATIONS WITH ARCHITECTURAL AND MECHANICAL DRAWINGS
 - T.J. DENOTES TIE JOIST
 - SNOW BUILD UP TO BE IN ACCORDANCE WITH NATIONAL BUILDING CODE OF CANADA, CURRENT EDITION.
 - ALL JOISTS TO BE DESIGNED TO SUPPORT ADDITIONAL 300# (1.3kN) POINT LOAD FOR MECHANICAL EQUIPMENT ANYWHERE ALONG JOISTS.

MASONRY WALL SCHEDULE	
MARK	DESCRIPTION
BW1	190 CONCRETE BLOCK WALL REINF: 15M VERTICAL BARS @ 800 O.C. (CORE FILLED) HORIZONTAL LADDER REINF. @ 200 O.C. NOTE: COMBINATION OF 190 & 90 HIGH BLOCKS USED. (SEE ARCH.)
BW2	240 HIGH ARCHITECTURAL CONCRETE BLOCK WALL REINF: 15M VERTICAL BARS @ 400 O.C. (CORE FILLED) HORIZONTAL LADDER REINF. @ 200 O.C. MAX. WALL HEIGHT = 3.6m (12'-0") PROVIDE DRAINAGE WEEP HOLES @ 100 000 (SEE ARCH.) (SEE ARCH. FOR TYPE OF BLOCK)

MASONRY LINTEL / CONC. BM SCHEDULE	
MARK	DESCRIPTION
L1	190x390 U BLOCK REINF: 1-15M TOP AND BOTTOM 10M (SINGLE LEG) @ 150 O.C.
L2	190x590 (3 COURSE) REINF: 1-15M TOP AND BOTTOM 10M (SINGLE LEG) @ 200 O.C.
B1	190 x 780 (4 COURSE) REINF: 1-20M TOP AND 2-25M BOTTOM 10M TIES (SINGLE LEG) @ 250 O.C.

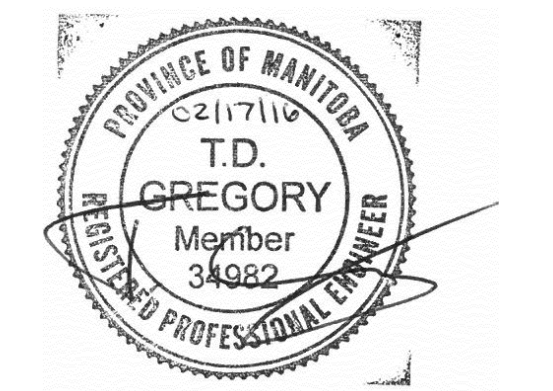
NOTE:
LINTEL/BEAM U-BLOCK TO CONTINUE MIN. 203 INTO ADJACENT WALL. TYPICAL EACH SIDE.

COLUMN SCHEDULE	
MARK	DESCRIPTION
C1	4-1.102x102x13 STAR-SHAPED COLUMN (PROVIDE CONT. WELD 4 EDGES & GRIND SMOOTH) c/w 280x280x6.4 CAP PLATE (REFER TO ARCH. FOR CONFIGURATION) PROVIDE 13mm FLEXCELL ALL AROUND @ MAIN FLOOR SLAB LEVEL.
C2	190x390 CONCRETE BLOCK COLUMN R/W: 2-15M EACH CORE (FILLED)

NOTES:
- ALL EXTERIOR STEEL TO BE GALVANIZED.
- ALL COLUMNS TO HAVE 4- A307 19mm Ø x 450mm LONG ANCHOR BOLTS.
- BASE PLATES TO BE 50mm AND CAP PLATES TO BE 19mm.
- PROVIDE FULL MOMENT CONNECTION INTO PILE/ BLOCKWALL. TYPICAL.

1 16.02.17 ISSUED FOR CONSTRUCTION

No. DATE REVISION / ISSUANCE



architecture inc.
120 Port Street, Suite 100 Winnipeg, Manitoba R2H 0E4
Tel: (204)947-2222
Fax: (204)947-2522
E-mail: general@ldaeng.ca
Web: www.ldaeng.ca

Lavergne Draward & Associates Inc.
200-193 Dumoulin Street
Winnipeg, Manitoba R2H 0E4
Tel: (204)947-2222
Fax: (204)947-2522
E-mail: general@ldaeng.ca
Web: www.ldaeng.ca

Project
**TRANSCONA CENTENNIAL POOL
PHASE 1B**
1101 WABASHA STREET

Sheet Title
ROOF FRAMING PLAN

Project No. 15281
Date FEB. 17, 2016
Sheet **S2.2**