

NOTES:

1. General Notes

All distances are in metres and may be converted to feet by multiplying by 3.28084.
 All plans referred to are of record in the Winnipeg Land Titles Office.
 All construction and testing shall be done in accordance with City of Winnipeg By-Laws and Construction Standards.

All work shall be executed in compliance with the Manitoba Health and Safety Act and Regulations.

Contractor shall verify and be responsible for all dimensions and grades, any errors and/or omissions must be reported to the Contract Administrator. Any claims resulting from the Contractor's failure to do so shall be at the Contractor's expense.

Contractor shall obtain all permits to carry out the work and shall strictly adhere to the conditions of each permit.

Downspouts shall discharge onto splash pads, and shall not be located nor directed so as to cause storm water to drain onto adjacent property.

2. New Service Pipe Connections

All water service pipe and sewer service pipe connections shall be completed in accordance with the City of Winnipeg Standard Construction Specifications Underground Works.

Pipe alignments are to be reviewed and confirmed by the contractor in the field prior to construction.

Pipe bedding and backfill shall be in accordance with SD-001 and SD-002. Class 4 backfill shall be used in landscaped areas, Class 2 backfill shall be used for pipe installations within 1m of hard surfacing.

50mm water service pipe shall be in accordance with AWWA C800 and ASTM B88M, Type K, seamless copper water tubing.

Install water service pipe and provide for water meter installation as per SD-027 of the City of Winnipeg Standard Construction Specifications. The City is to confirm water meter location prior to install of water service pipe.

200mm and 250mm sewer service pipe shall be in accordance with CAN/CSA B182.2 and ASTM D 3034, SDR 35. Install sewer service pipe at a longitudinal slope indicated on the drawing.

250mm land drainage pipe shall be in accordance with CAN/CSA B182.2 and ASTM D 3034, SDR 35. Install sewer service pipe at a longitudinal slope indicated on the drawing. Sections of pipe below the road shall be installed by trenchless methods.

Multi-flow sub-drain pipe to be installed in accordance with SCD-659 and manufacturer's recommendations.

Shop drawings for pool drain manhole and hatch to be submitted for review prior to fabrication.

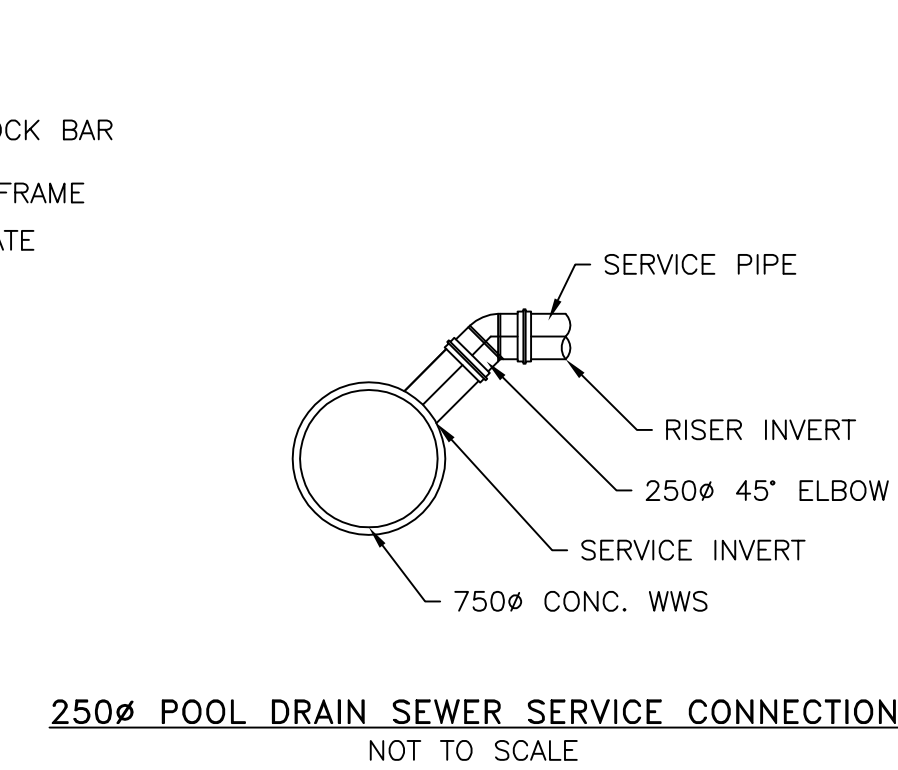
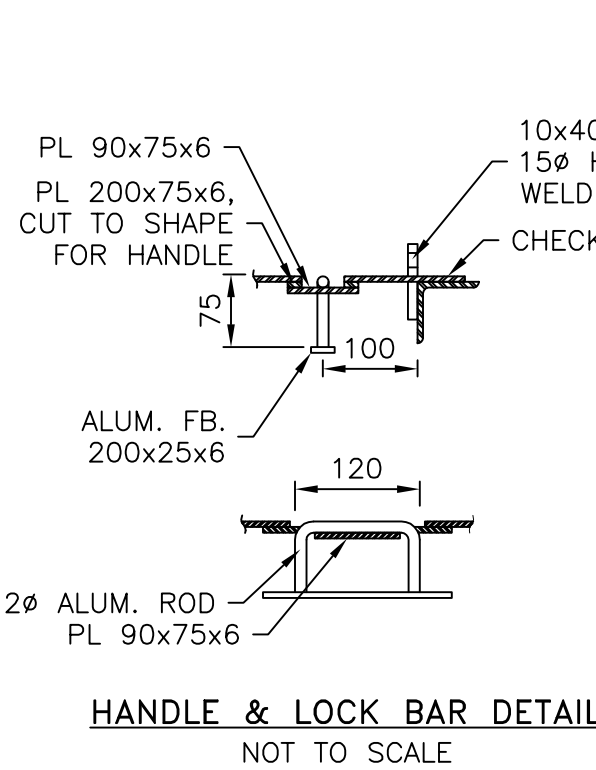
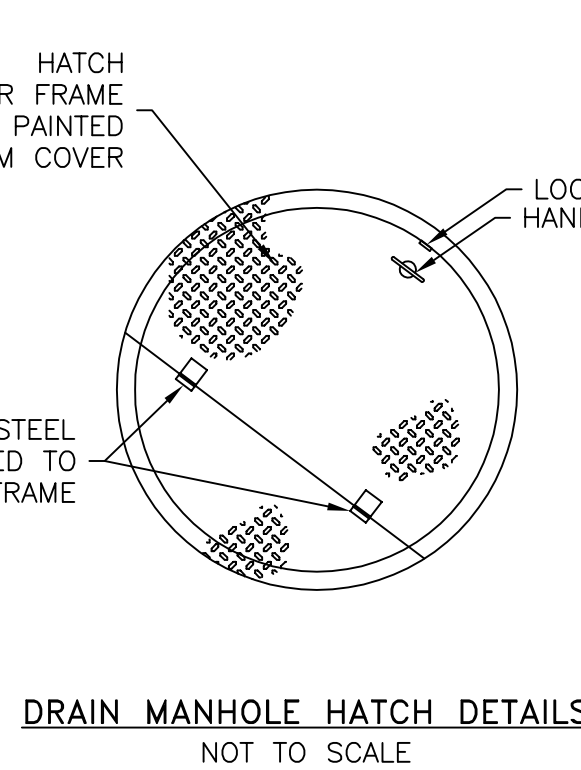
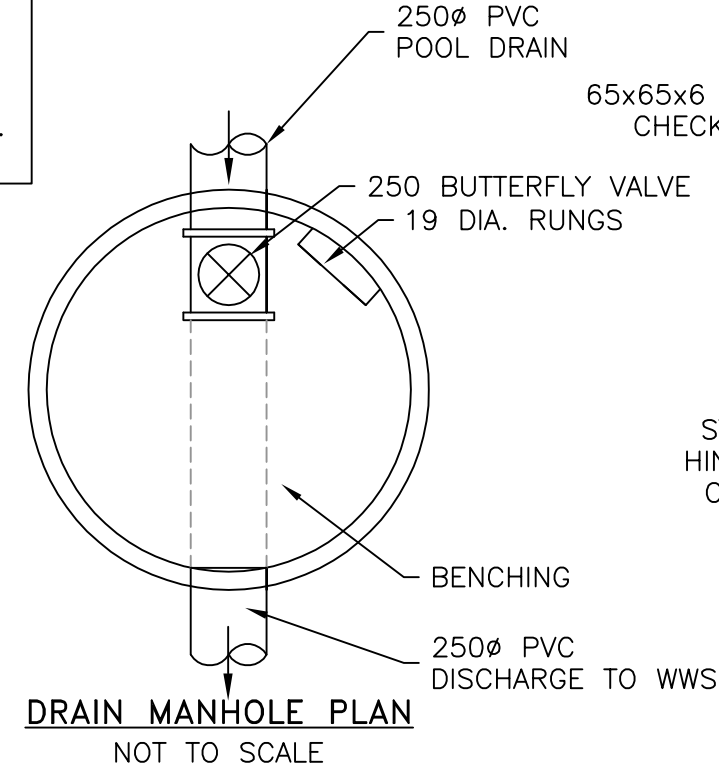
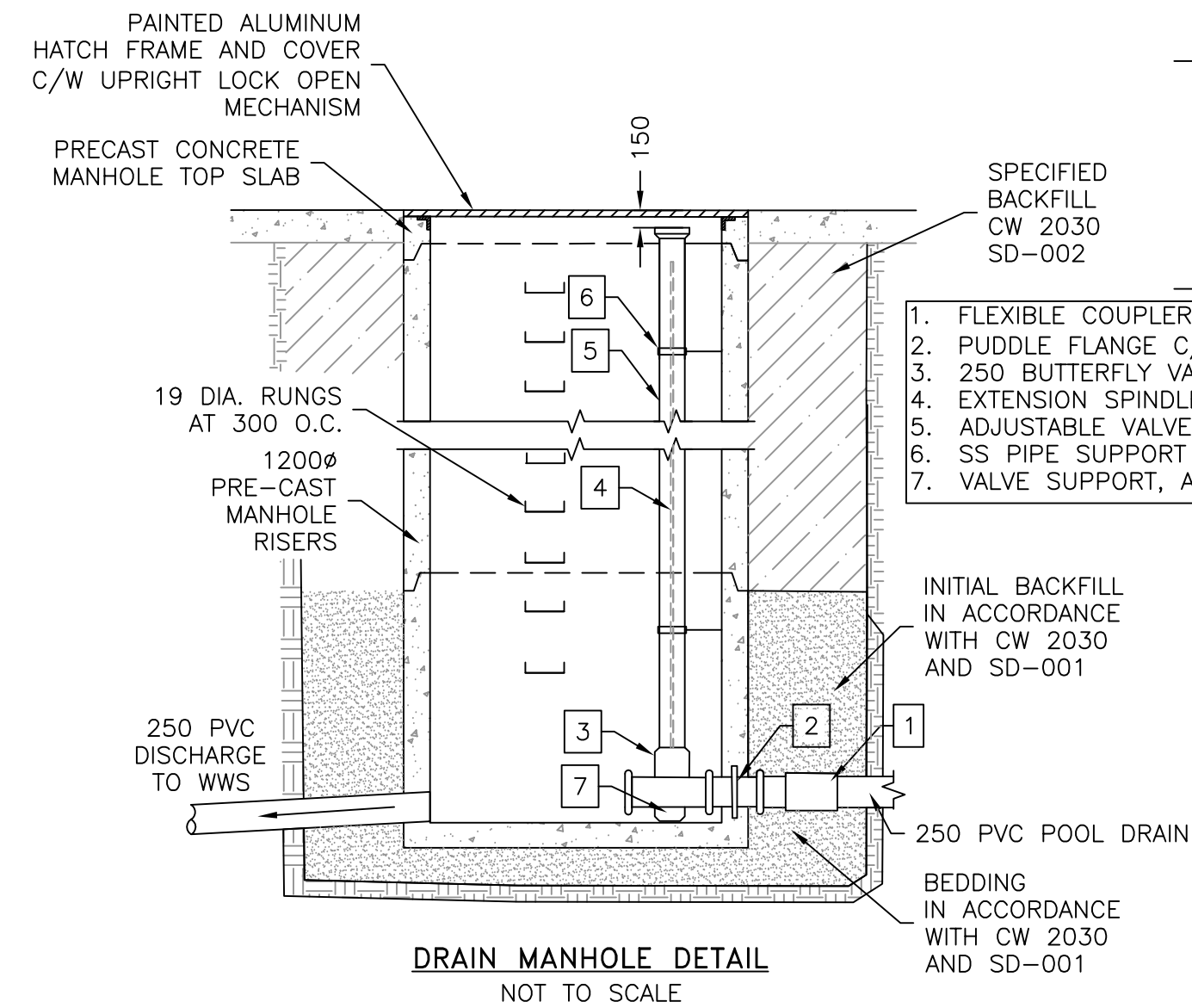
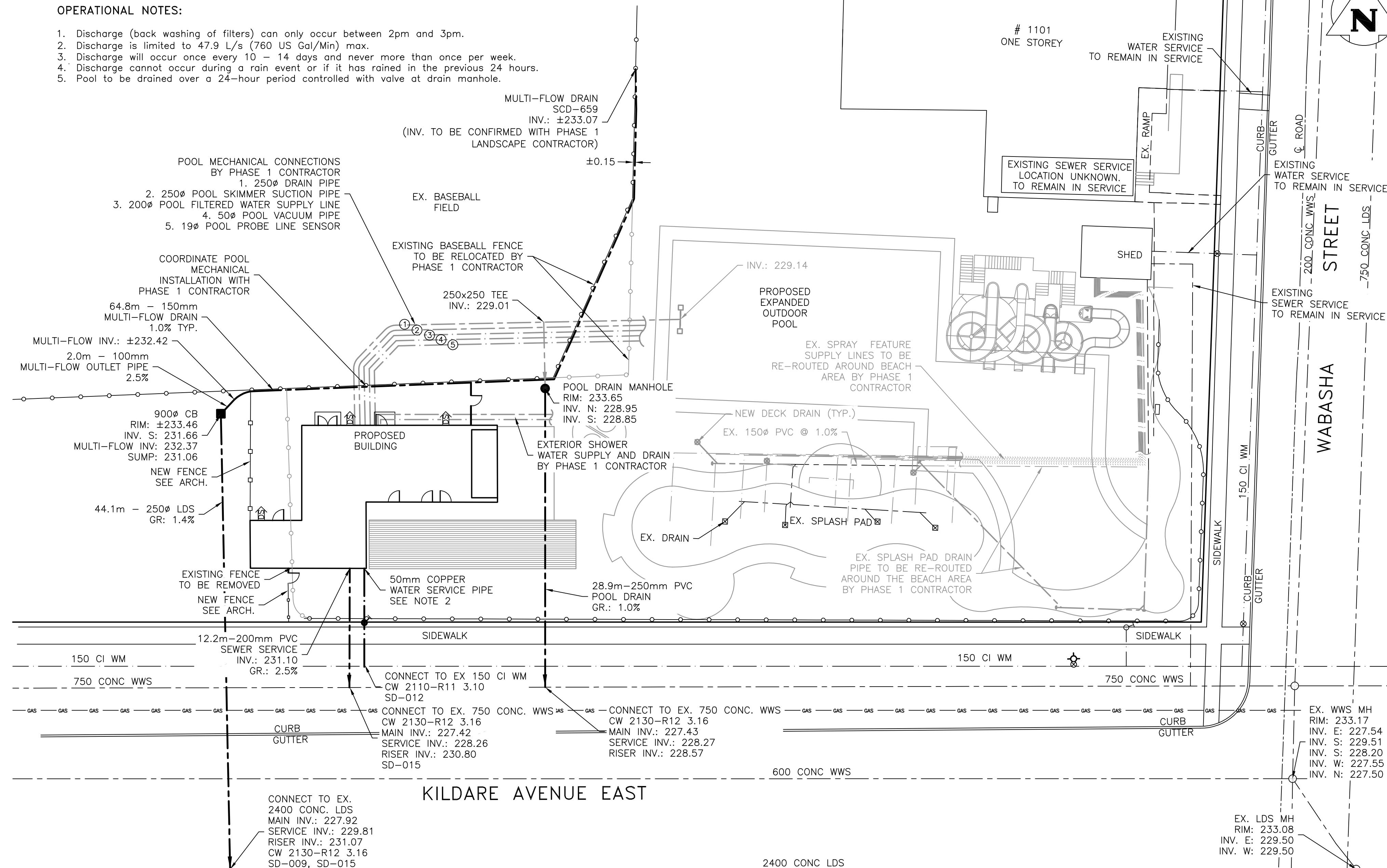
The contractor shall provide a CCTV/DVD video inspection of the installed waste water service lines and their respective connection to the City of Winnipeg Water and Waste Department as per COW standards.

3. Road Restoration

All street cuts and restoration shall be made in accordance with streets By-Law No. 1481/77, the City of Winnipeg Street Cuts Manual, and the City of Winnipeg Standard Construction Specifications.

OPERATIONAL NOTES:

- Discharge (back washing of filters) can only occur between 2pm and 3pm.
- Discharge is limited to 47.9 L/s (760 US Gal/Min) max.
- Discharge will occur once every 10 - 14 days and never more than once per week.
- Discharge cannot occur during a rain event or if it has rained in the previous 24 hours.
- Pool to be drained over a 24-hour period controlled with valve at drain manhole.



METRIC
 WHOLE NUMBERS INDICATE MILLIMETRES
 DECIMALIZED NUMBERS INDICATE METRES

LOCATION APPROVED UNDERGROUND STRUCTURES

SUPV. U/G STRUCTURES COMMITTEE DATE

NOTE:
 LOCATION OF UNDERGROUND STRUCTURES AS SHOWN ARE BASED ON THE BEST INFORMATION AVAILABLE. BUT NO GUARANTEE IS GIVEN THAT ALL EXISTING UTILITIES ARE SHOWN OR THAT THE GIVEN LOCATIONS ARE EXACT. CONFIRMATION OF EXISTENCE AND EXACT LOCATION OF ALL SERVICES MUST BE OBTAINED FROM THE INDIVIDUAL UTILITIES BEFORE PROCEEDING WITH CONSTRUCTION.

M:\05_2016 - 20860 - 20860 - 1000 - 1099\14-1022-2 ENG Transcona Pool Services (1x1 Arch)\CAD\14-1022 Site Service Plan.dwg
 C:\Work\PROJECTS\2014\1022-2 ENG Transcona Pool Services (1x1 Arch)\CAD\14-1022 Site Service Plan.dwg

PROPERTY BOUNDARY	150 WM	WATERMAIN	150 WM
SUPPORTING BOUNDARIES	—	HYDRANT	—
CENTERLINE ROAD	—	VALVE	—
DRAINAGE/DITCH	—	LAND DRAINAGE SEWER	600 LDS
GAS	—	WASTEWATER SEWER	300 WWS
HYDRO	—	MANHOLE	—
MTS	—	CATCH BASIN	—
CULVERT	—	CURB INLET	—
ELEVATION	232.20	CURB STOP	—
DITCH/SWALE ELEVATION	232.20	PLUG	—
PROPOSED GRADING SLOPE	-0.5%	HYDRO POLE AND ANCHOR	—
EXISTING	LEGEND-PLAN	PROPOSED	LEGEND-PLAN

WARNING
 IF POWER EQUIPMENT OR EXPLOSIVES ARE TO BE USED FOR EXCAVATION ON THIS PROJECT THE CONTRACTOR MUST:
 1) NOTIFY THE GAS COMPANY OF THE PROPOSED LOCATION OF EXCAVATION.
 2) TAKE PRECAUTION TO AVOID DAMAGE TO GAS COMPANY INSTALLATIONS. SEE PROVINCIAL REGULATION 140/92 FOR DETAILS

NO.	REVISIONS	DATE	BY	1ST	2ND
1	ISSUED FOR CONSTRUCTION	09/05/16	MDS	BC	MDS
0	ISSUED FOR CONSTRUCTION	17/02/16	MDS	BC	MDS

BARNES & DUNCAN
 SURVEYING
 GEOMATICS
 & ENGINEERING

298 Fort Street
 Winnipeg, Manitoba
 R3C 1E5

DESIGNED MDS
 DRAWN MDS

DATE DRAWN FEB. 17, 2016

TOPOGRAPHIC SURVEY BY PHILLIPS & STEVENS

APEGM
 Certificate of Authorization
 Barnes & Duncan
 No. 3726

2016 PROJECT NUMBER 14-1022

DATE OF SURVEY OCT. 15-NOV. 12, 2014

SHEET 1 OF 1

CAD FILE DRAWING NAME 14-1022 SITE SERVICE PLAN

16.02.17 - ISSUED FOR CONSTRUCTION
 No. DATE REVISION/ISSUANCE



architecture inc.
 100 Fort Street, Winnipeg, Manitoba, R3C 1E5



TRANSCONA CENTENNIAL POOL PHASE 1B
 1101 Wabasha Street

SITE SERVICING PLAN

Project No. 1426
 Date FEBRUARY 17, 2016

C1.0