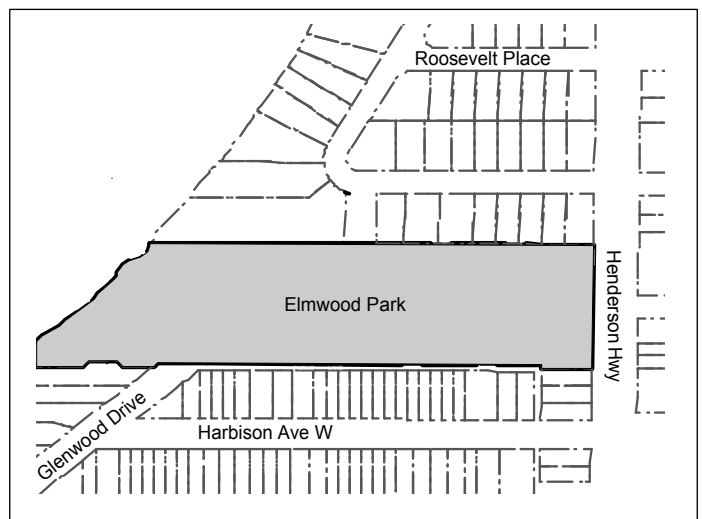
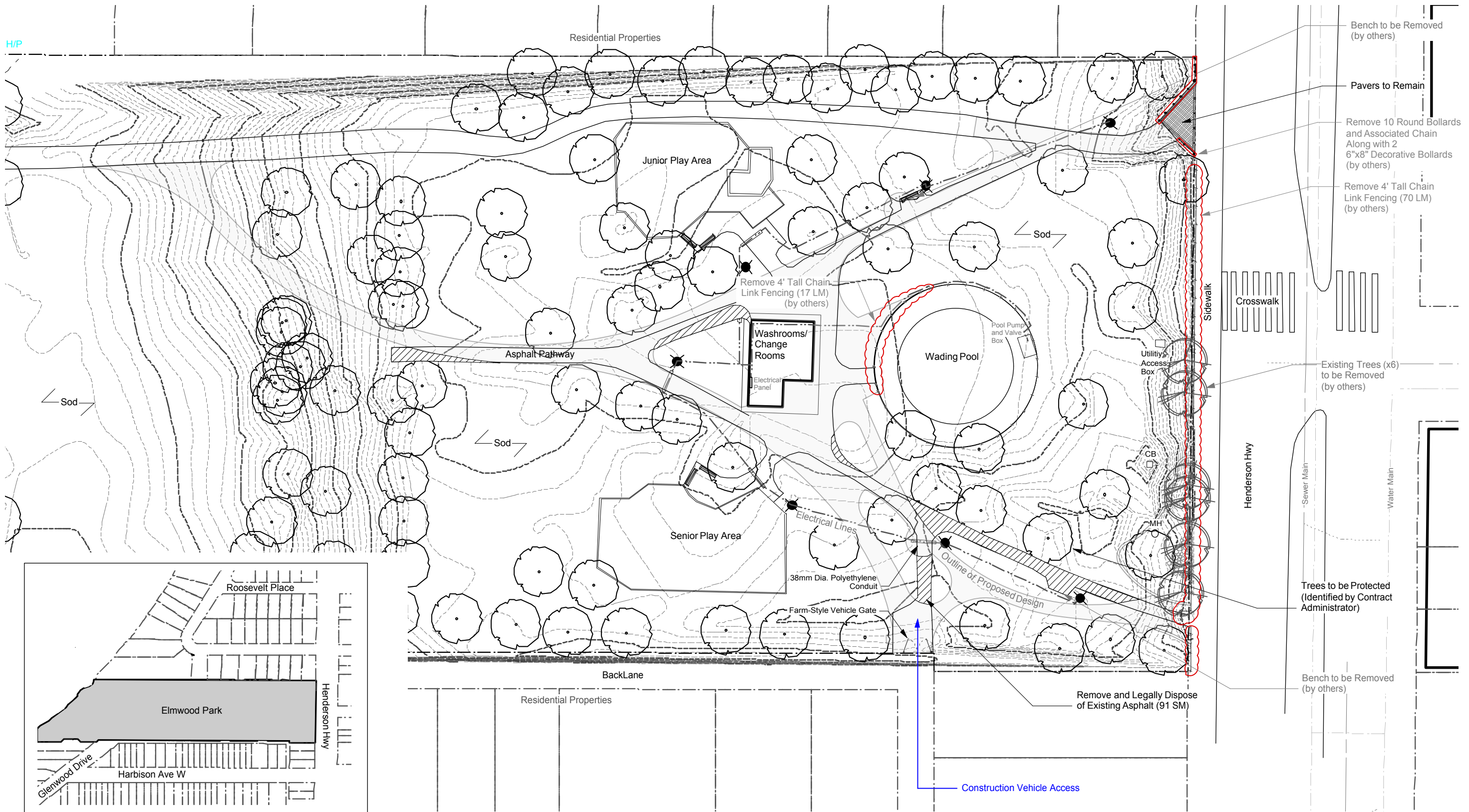


H/P



LOCATION PLAN
n.t.s.



CONTRACTOR TO CONFIRM ALL DIMENSIONS AND REPORT ANY DISCREPANCIES TO CONTRACT ADMINISTRATOR PRIOR TO CONSTRUCTION. LOCATION OF UNDERGROUND STRUCTURES AS SHOWN ARE BASED ON THE BEST INFORMATION AVAILABLE BUT NO GUARANTEE IS GIVEN THAT ALL EXISTING UTILITIES ARE SHOWN OR THAT THE GIVEN LOCATIONS ARE EXACT. CONFIRMATION OF EXISTENCE AND EXACT LOCATION OF ALL SERVICES MUST BE OBTAINED FROM THE INDIVIDUAL UTILITIES BEFORE PROCEEDING WITH CONSTRUCTION.



THE CITY OF WINNIPEG
Planning, Property and Development Department
Planning and Land Use Division
Unit 15 - 30 Fort Street, Winnipeg, MB, (R3C 4X5)

DESIGNED BY	IL	CHECKED BY	
DRAWN BY	IL	APPROVED BY	
HORIZ. SCALE	1:500		
VERT. SCALE			
DATE	SEPT 2014		

MANAGER, PARK AND OPEN SPACES	DATE
MANAGER, PLANNING AND LAND USE DIVISION	DATE

DRAWING TITLE	DRAWING NO.
ELMWOOD PARK	
PATHWAY AND DRAINAGE IMPROVEMENTS	
Existing Conditions and Removals	E.8-1
SITE ADDRESS	BID OPPORTUNITY NO.
380 Henderson Hwy	862-2014

08-11-24 Elmwood PK