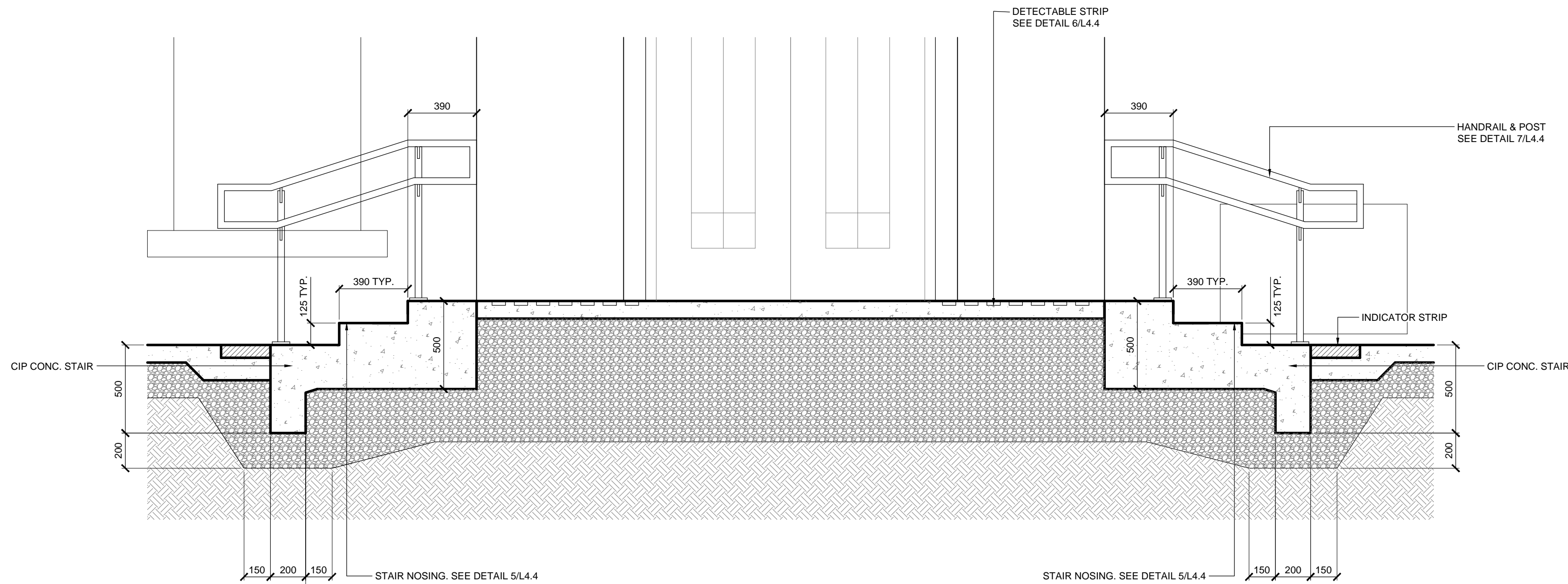
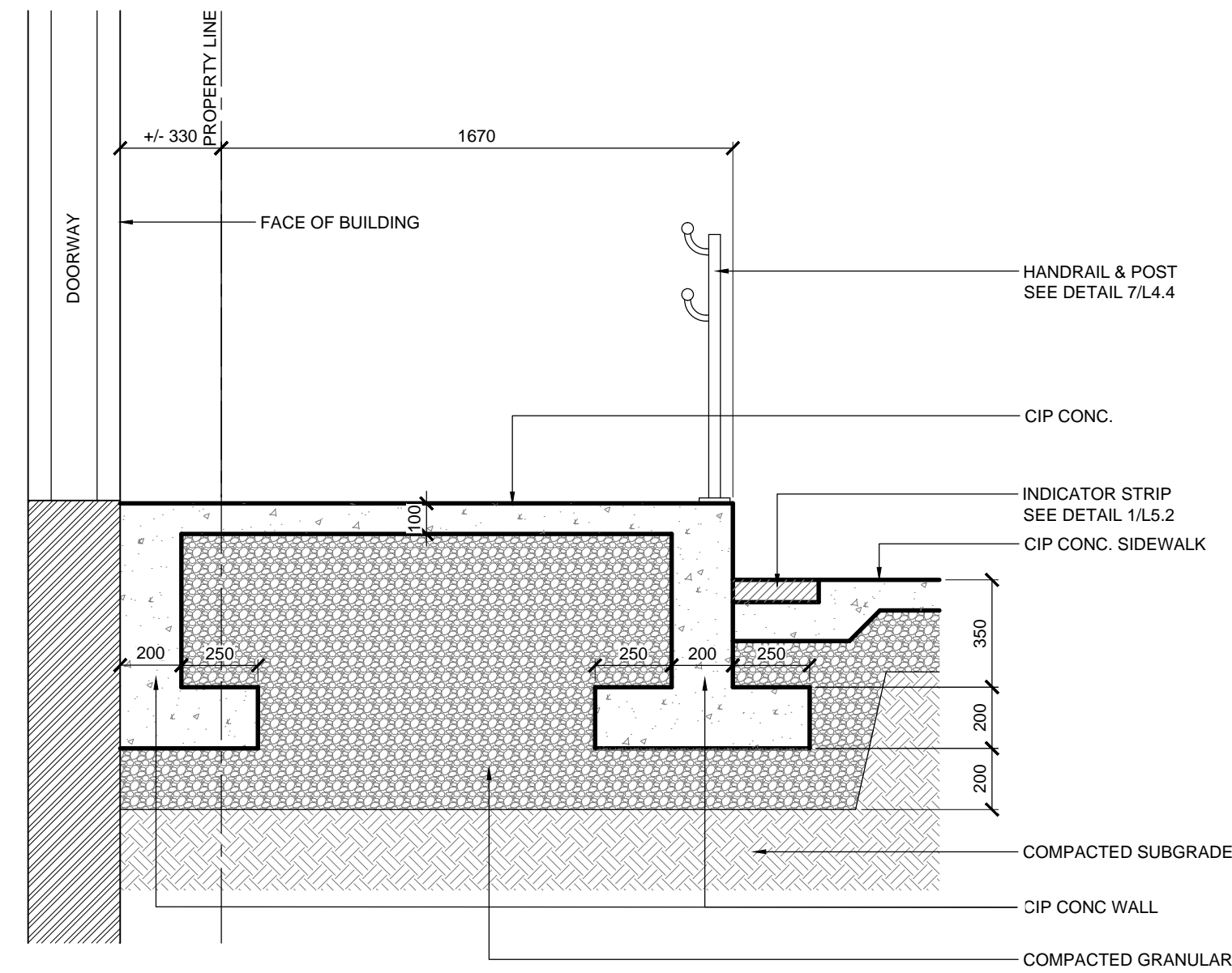


1 PLAN
S1.1 SCALE 1:20



2 STAIR, LANDING & RAMP - SECTION A-A
S1.1 SCALE 1:20



2 LANDING - SECTION B-B
S1.1 SCALE 1:20

GENERAL NOTES:

- DESIGN IS IN ACCORDANCE WITH THE NATIONAL BUILDING CODE OF CANADA, 2005 EDITION PLUS 1998 MANITOBA AMENDMENTS. CONCRETE WALLS ARE DESIGNED IN ACCORDANCE WITH THE RECOMMENDATIONS CONTAINED IN ACI 350R FOR WATERTIGHT STRUCTURES.

CAST IN PLACE CONCRETE:

- TO BE READ IN CONJUNCTION WITH CW 2160 AND AS AMENDED IN ACCORDANCE WITH THESE NOTES.
- CONCRETE MIX WAS IN ACCORDANCE WITH ALTERNATIVE 1, AND POSSESSED THE FOLLOWING PROPERTIES:
 - CLASS OF EXPOSURE: S-1
 - MINIMUM COMPRESSIVE STRENGTH AT 28 DAYS: 35MPa
 - MAXIMUM SLUMP: 80mm \pm 20mm
 - AIR CONTENT: 5 - 8%
 - MAXIMUM WATER/CEMENT RATIO: 0.40
- CONCRETE COVER = 50mm.
- ALL EXTERIOR CORNERS CHAMFERED 20mm.

REINFORCING STEEL:

- TO BE READ IN CONJUNCTION WITH CW 2160 AND AS AMENDED IN ACCORDANCE WITH THESE NOTES.
- ALL REINFORCING STEEL CONFORMS TO CSA G30.18M, GRADE 400W.
- ALL CONCRETE REINFORCING WORK PERFORMED IN ACCORDANCE WITH CSA A23.1.
- LAPS AT LEAST 40 BAR DIAMETERS, REINFORCING SPLICES NOT INDICATED IN THE DRAWINGS LOCATED AT POINTS OF MINIMUM STRESS.
- BEFORE PLACING CONCRETE, REINFORCING WAS CLEAN, FREE OF LOOSE SCALE, DIRT OR OTHER FOREIGN MATTER THAT WOULD REDUCE OR PREVENT BOND TO THE CONCRETE.

METRIC

WHOLE NUMBERS INDICATE MILLIMETRES
DECIMALIZED NUMBERS INDICATE METRES



LOCATIONS APPROVED
UNDERGROUND STRUCTURES

SIGNED BY: _____ DATE: _____
SUPV U/G STRUCTURES

LOCATION OF UNDERGROUND STRUCTURES AS SHOWN ARE BASED ON THE BEST INFORMATION AVAILABLE BUT NO GUARANTEE IS GIVEN THAT ALL EXISTING UTILITIES ARE SHOWN OR THAT THE GIVEN LOCATIONS ARE EXACT CONFIRMATION OF EXISTANCE AND EXACT LOCATION OF ALL SERVICES MUST BE OBTAINED FROM THE INDIVIDUAL UTILITIES BEFORE PROCEEDING

G.B.M. -			
ELEV. -			
F			
E			
D			
C			
B			
A	ISSUED FOR TENDER	07/08/14	MS
NO.	REVISIONS	DATE	BY



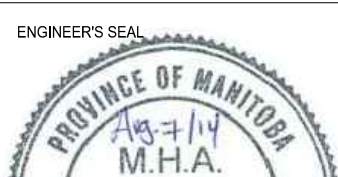
DESIGNED BY JH/MM
DRAWN BY JH/MS

HOR. SCALE AS NOTED
VERTICAL AS NOTED
DATE JUL 29/14

MMM Group Limited.
Suite 111 - 93 Lombard Ave.
Winnipeg, MB R3B 3B1
t. 204.943.3178
f. 204.943.4948
www.mmm.ca

CHECKED BY MM
APPROVED BY MM

RELEASED FOR CONSTRUCTION
DATE



CONSULTANT ACAD DWG. NO.
S1.1



THE CITY OF WINNIPEG
PUBLIC WORKS DEPARTMENT
ENGINEERING SERVICES DIVISION

CITY OF WINNIPEG

NORTH EAST EXCHANGE DISTRICT ENGINEERING STUDY

MARKET STAIRS & RAMP

CITY DRAWING NUMBER

BID NO.
742-2014