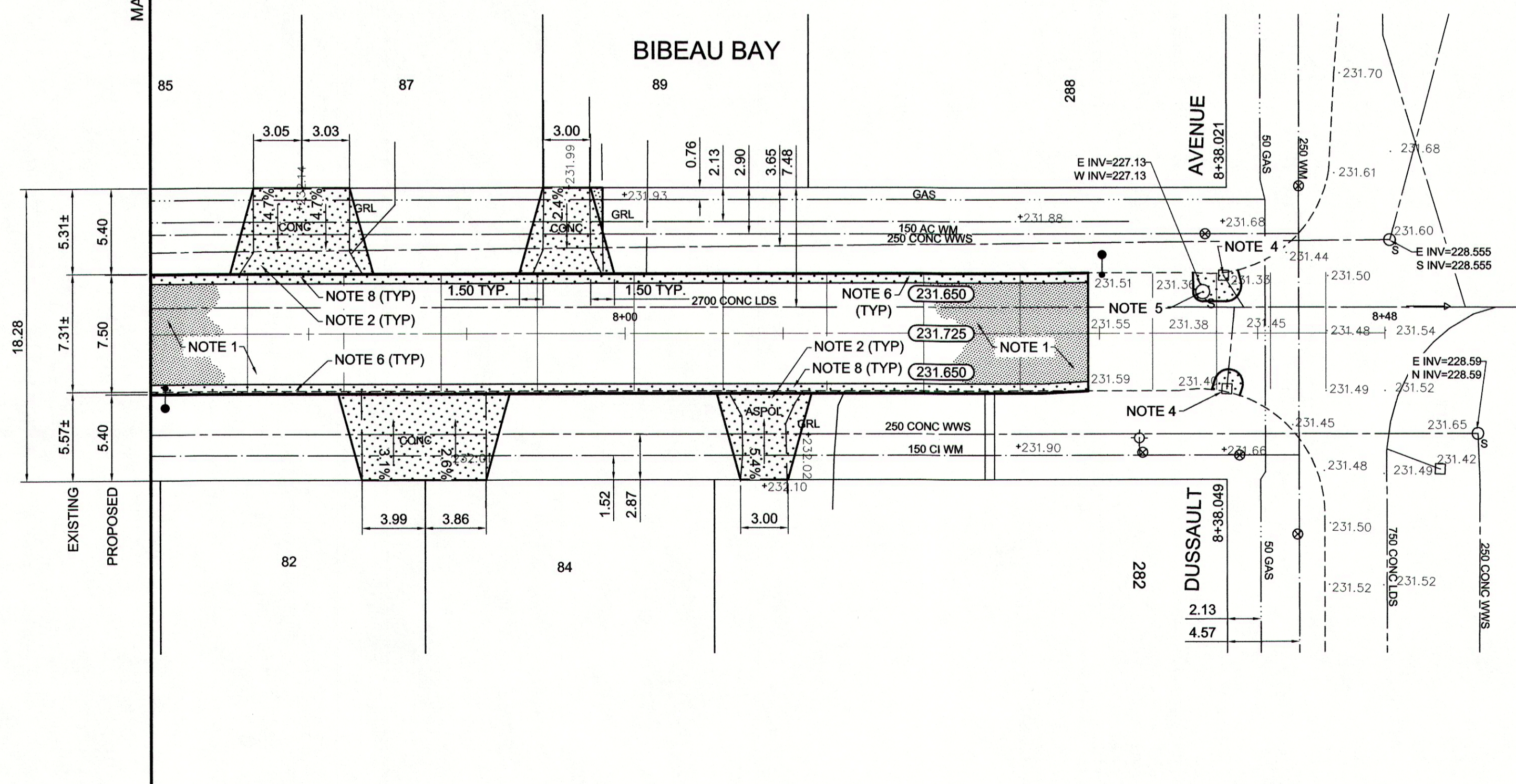


REFERENCE NOTES

- A. PAVEMENT DIMENSIONS ARE TO BACK OF CURB
- B. BASELINE IS CENTRE LINE RIGHT-OF-WAY
- C. PROPERTY LINES OBTAINED FROM CITY OF WINNIPEG L.B.I.S., AND NO SCALE FACTOR WAS APPLIED
- D. REFER TO AECOM FIELD BOOK NO. 4808

CONSTRUCTION NOTES

1. REMOVE EXISTING CONCRETE PAVEMENT AND CONSTRUCT NEW ASPHALTIC PAVEMENT TYPE 1A (100mm)
2. REMOVE EXISTING CONCRETE PAVEMENT AND CONSTRUCT NEW 150mm REINFORCED CONCRETE PAVEMENT
3. REMOVE EXISTING FRAME AND COVER AND INSTALL NEW FRAME AND COVER (AP-005 AND AP-004)
4. ADJUST EXISTING MANHOLE/CATCH BASIN TO GRADE
5. INSTALL NEW CAST IRON RISER RING
6. CONSTRUCT NEW BARRIER CURB AND GUTTER (180mm HT.)
7. CONSTRUCT NEW CURB RAMP AND GUTTER (10mm HT. INTEGRAL)
8. CONSTRUCT NEW LIP CURB AND GUTTER (40mm HT. INTEGRAL)
9. REMOVE AND REINSTALL EXISTING PAVERS
10. ADJUST EXISTING WATER VALVE TO GRADE
11. RENEW EXISTING 100mm CONCRETE SIDEWALK
12. ADJUST EXISTING CURB STOP



METRIC
WHOLE NUMBERS INDICATE MILLIMETRES
DECIMALIZED NUMBERS INDICATE METRES

150 mm W.M.	WATERMAIN	150 mm W.M.	HYDRO	— X —	C PROFILE
Hydrant symbol	HYDRANT	Hydrant symbol	M.T.S.	— □ —	INSIDE GUTTER
Valve symbol	VALVE	Valve symbol	CONCRETE	— ○ —	OUTSIDE GUTTER
300mm L.D.S.	LAND DRAINAGE SEWER	300mm L.D.S.	ASPHALT	— ◇ —	N/W PROPERTY LINE
250mm W.W.S.	WASTEWATER SEWER	250mm W.W.S.	PROPERTY LINE	— ○ —	S/E PROPERTY LINE
Manhole symbol	MANHOLE	Manhole symbol	SURVEY BAR		
Catch basin symbol	CATCH BASIN	Catch basin symbol	ELEVATION	(35.750)	
Catch pit symbol	CATCH PIT	Catch pit symbol	TREE		
Junction symbol	JUNCTIONS	Junction symbol	SIDEWALK RAMP		
Culvert symbol	CULVERT	Culvert symbol	CONCRETE SIDEWALK		
Gas symbol	GAS	Gas symbol	FENCE		
Existing symbol	LEGEND - PLAN	Proposed symbol	LEGEND - PLAN	Proposed symbol	Existing symbol
Existing symbol	LEGEND - PROFILE	Proposed symbol	LEGEND - PROFILE	Proposed symbol	Existing symbol

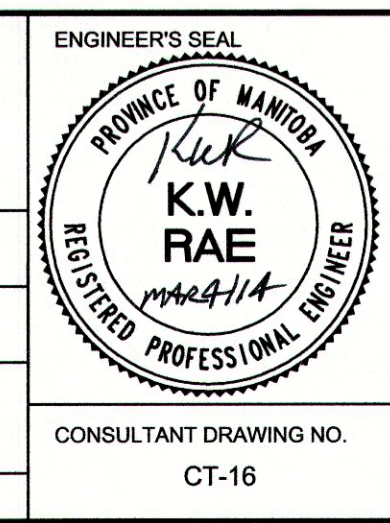
LOCATION APPROVED UNDERGROUND STRUCTURES

SUPV. U/G STRUCTURES COMMITTEE DATE

NOTE:
LOCATION OF UNDERGROUND STRUCTURES AS SHOWN ARE BASED ON THE BEST INFORMATION AVAILABLE. BUT NO GUARANTEE IS GIVEN THAT ALL EXISTING UTILITIES ARE SHOWN OR THAT THE GIVEN LOCATIONS ARE EXACT. CONFIRMATION OF EXISTENCE AND EXACT LOCATION OF ALL SERVICES MUST BE OBTAINED FROM THE INDIVIDUAL UTILITIES BEFORE PROCEEDING WITH CONSTRUCTION.

B.M. ELEV.	55-027	S E corner Speers Rd & Winkawa Rd. Tbt in W
	232.206	frdn Bellevue Jr High School, #296 Speers Rd. 5m S & 0.2m below brick @ NW corner
NO.	ISSUED FOR TENDER	03/04/2014 BC
	ISSUED FOR REVIEW	02/07/2014 BC
NO.	REVISIONS	DATE BY

DESIGNED BY	BC/SS	CHECKED BY	KWR
DRAWN BY	PB/RT	APPROVED BY	
HOR. SCALE:	1:250	RELEASED FOR CONSTRUCTION BY	
VERTICAL:	1:10	DATE	Mar 4/14
DATE	MARCH 2014	DATE	



THE CITY OF WINNIPEG
PUBLIC WORKS DEPARTMENT
ENGINEERING DIVISION

2014 LOCAL STREET RENEWAL PROGRAM

BIBEAU BAY - DUSSAULT AVENUE - DUSSAULT AVENUE
ASPHALT RECONSTRUCTION
STATION 7+70 TO DUSSAULT AVENUE

CITY DRAWING NUMBER
SHEET 16 OF 27

CONSULTANT DRAWING NO. CT-16