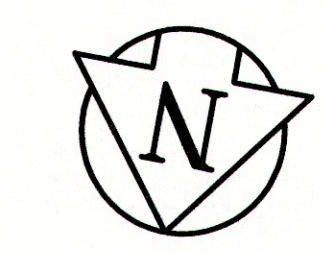


TYPICAL CROSS SECTION

- REFERENCE NOTES**
- PAVEMENT DIMENSIONS ARE TO BACK OF CURB
 - BASELINE IS CENTRE LINE RIGHT-OF-WAY
 - PROPERTY LINES OBTAINED FROM CITY OF WINNIPEG L.B.I.S., AND NO SCALE FACTOR WAS APPLIED
 - REFER TO AECOM FIELD BOOK NO. 4808

- CONSTRUCTION NOTES**
- REMOVE EXISTING CONCRETE PAVEMENT AND CONSTRUCT NEW ASPHALTIC PAVEMENT TYPE1A (100mm)
 - REMOVE EXISTING CONCRETE PAVEMENT AND CONSTRUCT NEW 150mm REINFORCED CONCRETE PAVEMENT
 - REMOVE EXISTING FRAME AND COVER AND INSTALL NEW FRAME AND COVER (AP-005 AND AP-004)
 - ADJUST EXISTING MANHOLE/CATCH BASIN TO GRADE
 - INSTALL NEW CAST IRON RISER RING
 - CONSTRUCT NEW BARRIER CURB AND GUTTER (180mm HT.)
 - CONSTRUCT NEW CURB RAMP AND GUTTER (10mm HT. INTEGRAL)
 - CONSTRUCT NEW LIP CURB AND GUTTER (40mm HT. INTEGRAL)
 - REMOVE AND REINSTALL EXISTING PAVERS
 - ADJUST EXISTING WATER VALVE TO GRADE
 - RENEW EXISTING 100mm CONCRETE SIDEWALK
 - ADJUST EXISTING CURB STOP



EXISTING	LEGEND - PLAN	PROPOSED	EXISTING	LEGEND - PLAN	PROPOSED	EXISTING	LEGEND - PROFILE	PROPOSED
150mm W.M.	WATERMAIN	150mm W.M.	---	HYDRO	---	---	C PROFILE	---
300mm L.D.S.	LAND DRAINAGE SEWER	300mm L.D.S.	---	CONCRETE	---	---	INSIDE GUTTER	---
250mm W.W.S.	WASTEWATER SEWER	250mm W.W.S.	---	ASPHALT	---	---	OUTSIDE GUTTER	---
---	MANHOLE	---	---	PROPERTY LINE	---	---	N/W PROPERTY LINE	---
---	CATCH BASIN	---	---	SURVEY BAR	---	---	S/E PROPERTY LINE	---
---	CATCH PIT	---	---	ELEVATION	(35.750)	---	---	---
---	JUNCTIONS	---	---	TREE	---	---	---	---
---	CULVERT	---	---	SIDEWALK RAMP	---	---	---	---
---	GAS	---	---	CONCRETE SIDEWALK	---	---	---	---
---	---	---	---	FENCE	---	---	---	---

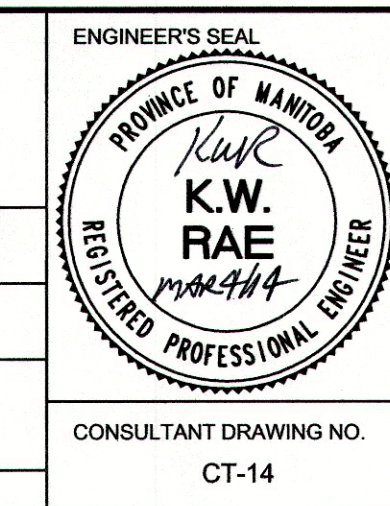
LOCATION APPROVED UNDERGROUND STRUCTURES

SUPV. U/G STRUCTURES COMMITTEE DATE

NOTE:
LOCATION OF UNDERGROUND STRUCTURES AS SHOWN ARE BASED ON THE BEST INFORMATION AVAILABLE. BUT NO GUARANTEE IS GIVEN THAT ALL EXISTING UTILITIES ARE SHOWN OR THAT THE GIVEN LOCATIONS ARE EXACT. CONFIRMATION OF EXISTENCE AND EXACT LOCATION OF ALL SERVICES MUST BE OBTAINED FROM THE INDIVIDUAL UTILITIES BEFORE PROCEEDING WITH CONSTRUCTION.

B.M. ELEV.	55-027 232.206	S E corner Speers Rd & Winkawa Rd Tbt in W Indn Bellevue Jr High School, #296 Speers Rd. 5m S & 0.2m below brick @ NW corner
NO.	REVISIONS	DATE BY

DESIGNED BY	BC/SS	CHECKED BY	KWR
DRAWN BY	PB/RT	APPROVED BY	
HOR. SCALE:	1:250	RELEASED FOR CONSTRUCTION BY:	
VERTICAL:	1:10	DATE:	Mar 4/14



AECOM

THE CITY OF WINNIPEG
PUBLIC WORKS DEPARTMENT
ENGINEERING DIVISION

2014 LOCAL STREET RENEWAL PROGRAM

BIBEAU BAY-DUSSAULT AVENUE-DUSSAULT AVENUE
ASPHALT RECONSTRUCTION
STATION 5+50 TO STATION 6+60

CITY DRAWING NUMBER
SHEET 14 OF 27

CONSULTANT DRAWING NO. CT-14

METRIC
WHOLE NUMBERS INDICATE MILLIMETRES
DECIMALIZED NUMBERS INDICATE METRES