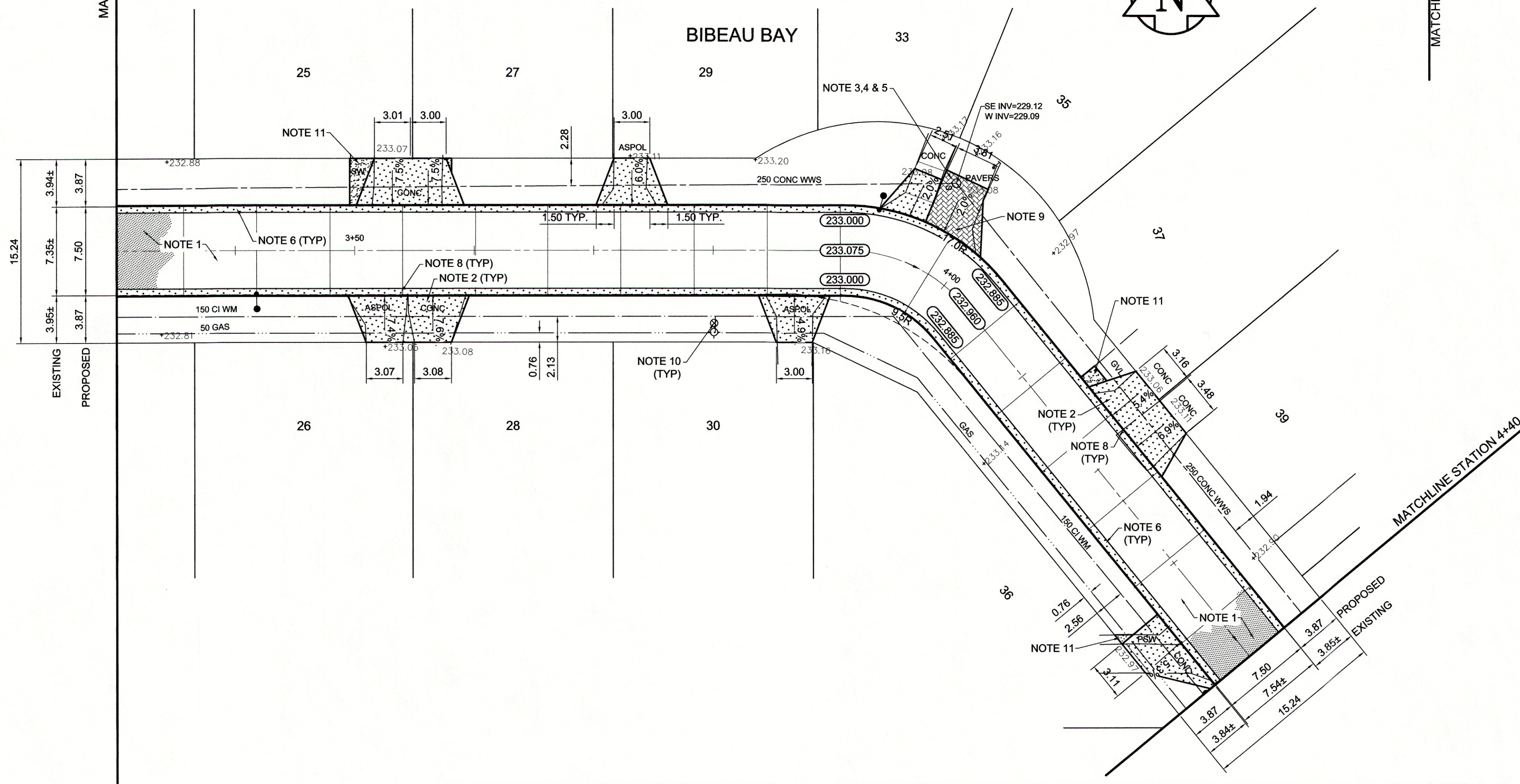


- REFERENCE NOTES**
- A. PAVEMENT DIMENSIONS ARE TO BACK OF CURB
 - B. BASELINE IS CENTRE LINE RIGHT-OF-WAY
 - C. PROPERTY LINES OBTAINED FROM CITY OF WINNIPEG L.B.I.S., AND NO SCALE FACTOR WAS APPLIED
 - D. REFER TO AECOM FIELD BOOK NO. 4808

- CONSTRUCTION NOTES**
1. REMOVE EXISTING CONCRETE PAVEMENT AND CONSTRUCT NEW ASPHALTIC PAVEMENT TYPE1A (100mm)
 2. REMOVE EXISTING CONCRETE PAVEMENT AND CONSTRUCT NEW 150mm REINFORCED CONCRETE PAVEMENT
 3. REMOVE EXISTING FRAME AND COVER AND INSTALL NEW FRAME AND COVER (AP-005 AND AP-004)
 4. ADJUST EXISTING MANHOLE/CATCH BASIN TO GRADE
 5. INSTALL NEW CAST IRON RISER RING
 6. CONSTRUCT NEW BARRIER CURB AND GUTTER (180mm HT.)
 7. CONSTRUCT NEW CURB RAMP AND GUTTER (10mm HT. INTEGRAL)
 8. CONSTRUCT NEW LIP CURB AND GUTTER (40mm HT. INTEGRAL)
 9. REMOVE AND REINSTALL EXISTING PAVERS
 10. ADJUST EXISTING WATER VALVE TO GRADE
 11. REGRADE EXISTING GRAVEL
 12. ADJUST EXISTING CURB STOP



METRIC
WHOLE NUMBERS INDICATE MILLIMETRES
DECIMALIZED NUMBERS INDICATE METRES

EXISTING	LEGEND - PLAN	PROPOSED	EXISTING	LEGEND - PLAN	PROPOSED	EXISTING	LEGEND - PROFILE	PROPOSED
	WATERMAIN HYDRANT			HYDRO M.T.S.			C PROFILE INSIDE GUTTER	
	VALVE			CONCRETE			OUTSIDE GUTTER	
	LAND DRAINAGE SEWER			ASPHALT			N/W PROPERTY LINE	
	WASTEWATER SEWER			PROPERTY LINE			S/E PROPERTY LINE	
	MANHOLE			SURVEY BAR				
	CATCH BASIN			ELEVATION				
	CATCH PIT			TREE				
	JUNCTIONS			SIDEWALK RAMP				
	CULVERT			CONCRETE SIDEWALK				
	GAS			FENCE				

LOCATION APPROVED UNDERGROUND STRUCTURES

SUPV. U/G STRUCTURES COMMITTEE DATE

NOTE:
LOCATION OF UNDERGROUND STRUCTURES AS SHOWN ARE BASED ON THE BEST INFORMATION AVAILABLE, BUT NO GUARANTEE IS GIVEN THAT ALL EXISTING UTILITIES ARE SHOWN OR THAT THE GIVEN LOCATIONS ARE EXACT. CONFIRMATION OF EXISTENCE AND EXACT LOCATION OF ALL SERVICES MUST BE OBTAINED FROM THE INDIVIDUAL UTILITIES BEFORE PROCEEDING WITH CONSTRUCTION.

B.M. ELEV.	55-027 232.206	S E corner Speers Rd & Winakwa Rd, Tbt in W Indn Bellevue Jr High School, #296 Speers Rd. 5m S & 0.2m below brick @ NW corner
NO.	ISSUED FOR TENDER	03/04/2014 BC
A	ISSUED FOR REVIEW	02/07/2014 BC
NO.	REVISIONS	DATE BY

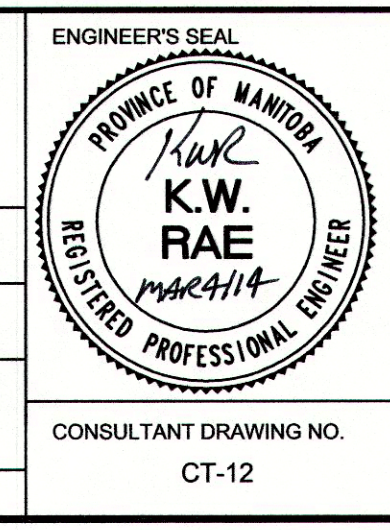
AECOM

DESIGNED BY: BC/SS
DRAWN BY: PB/RT

CHECKED BY: KWR
APPROVED BY:

HOR. SCALE: 1:250
VERTICAL: 1:10

RELEASED FOR CONSTRUCTION BY: [Signature]
DATE: March 14



THE CITY OF WINNIPEG
PUBLIC WORKS DEPARTMENT
ENGINEERING DIVISION

2014 LOCAL STREET RENEWAL PROGRAM

BIBEAU BAY-DUSSAULT AVENUE-DUSSAULT AVENUE
ASPHALT RECONSTRUCTION
STATION 3+30 TO STATION 4+40

CITY DRAWING NUMBER: SHEET 12 OF 27