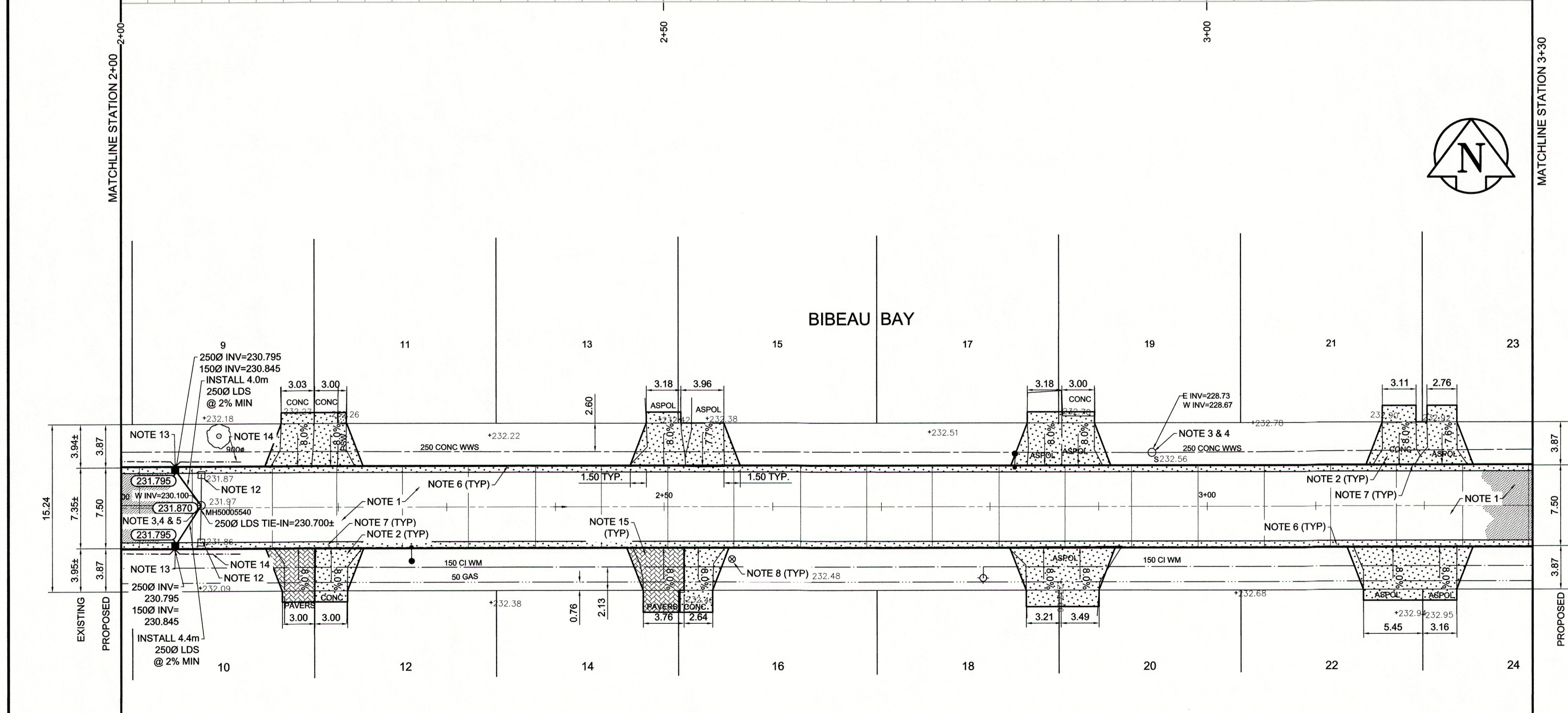


- REFERENCE NOTES**
- PAVEMENT DIMENSIONS ARE TO BACK OF CURB
 - BASELINE IS CENTRE LINE RIGHT-OF-WAY
 - PROPERTY LINES OBTAINED FROM CITY OF WINNIPEG L.B.I.S., AND NO SCALE FACTOR WAS APPLIED
 - REFER TO AECOM FIELD BOOK NO. 4808

- CONSTRUCTION NOTES**
- REMOVE EXISTING CONCRETE PAVEMENT AND CONSTRUCT NEW ASPHALTIC PAVEMENT TYPE 1A (100mm)
 - REMOVE EXISTING CONCRETE PAVEMENT AND CONSTRUCT NEW 150mm REINFORCED CONCRETE PAVEMENT
 - REMOVE EXISTING FRAME AND COVER AND INSTALL NEW FRAME AND COVER (AP-005 AND AP-004)
 - ADJUST EXISTING MANHOLE/CATCH BASIN TO GRADE
 - INSTALL NEW CAST IRON RISER RING
 - CONSTRUCT NEW BARRIER CURB AND GUTTER (180mm HT.)
 - CONSTRUCT NEW LIP CURB AND GUTTER (40mm HT. INTEGRAL)
 - ADJUST EXISTING WATER VALVE TO GRADE
 - ADJUST EXISTING CURB STOP
 - RENEW EXISTING 100mm CONCRETE SIDEWALK
 - REMOVE EXISTING CATCHBASIN AND ABANDON LEAD
 - INSTALL NEW CURB AND GUTTER INLET c/w 1200 CATCHBASIN (SD-024) AND CONNECT TO EXISTING MANHOLE
 - INSTALL 150mm SUBDRAIN
 - REMOVE AND REINSTALL EXISTING PAVERS



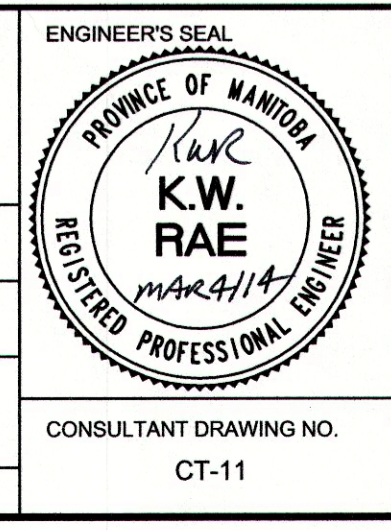
METRIC
WHOLE NUMBERS INDICATE MILLIMETRES
DECIMALIZED NUMBERS INDICATE METRES

150 mm W.M.	WATERMAIN	150 mm W.M.	HYDRO	C PROFILE	LOCATION APPROVED
⊕	HYDRANT	⊕	M.T.S.	—	UNDERGROUND STRUCTURES
⊙	VALVE	⊙	CONCRETE	—	SUPV. U/G STRUCTURES
⊚	LAND DRAINAGE SEWER	⊚	ASPHALT	—	COMMITTEE
⊛	WASTEWATER SEWER	⊛	PROPERTY LINE	—	DATE
○	MANHOLE	○	SURVEY BAR	—	NOTE:
□	CATCH BASIN	□	ELEVATION (35.750)	—	LOCATION OF UNDERGROUND STRUCTURES AS SHOWN ARE BASED ON THE BEST INFORMATION AVAILABLE. BUT NO GUARANTEE IS GIVEN THAT ALL EXISTING UTILITIES ARE SHOWN OR THAT THE GIVEN LOCATIONS ARE EXACT. CONFIRMATION OF EXISTENCE AND EXACT LOCATION OF ALL SERVICES MUST BE OBTAINED FROM THE INDIVIDUAL UTILITIES BEFORE PROCEEDING WITH CONSTRUCTION.
▽	CATCH PIT	▽	TREE	—	
+	JUNCTIONS	+	SIDEWALK RAMP	—	
—	CULVERT	—	CONCRETE SIDEWALK	—	
—	GAS	—	FENCE	—	
EXISTING	LEGEND - PLAN	PROPOSED	EXISTING	LEGEND - PROFILE	PROPOSED

B.M.	55-027	S E corner Speers Rd & Winslow Rd. Tbt in W
ELEV.	232.206	frdn Bellevue Jr High School, #296 Speers Rd. 5m S & 0.2m below brick @ NW corner

DESIGNED BY	BC/SS	CHECKED BY	KWR
DRAWN BY <td>PB/RT <td>APPROVED BY <td></td> </td></td>	PB/RT <td>APPROVED BY <td></td> </td>	APPROVED BY <td></td>	
HOR. SCALE:	1:250	RELEASED FOR CONSTRUCTION BY:	
VERTICAL:	1:10	DATE:	March 4/14

NO.	ISSUED FOR TENDER	03/04/2014	BC
A	ISSUED FOR REVIEW	02/07/2014	BC
NO.	REVISIONS	DATE	BY



THE CITY OF WINNIPEG
PUBLIC WORKS DEPARTMENT
ENGINEERING DIVISION

2014 LOCAL STREET RENEWAL PROGRAM

BIBEAU BAY-DUSSAULT AVENUE-DUSSAULT AVENUE
ASPHALT RECONSTRUCTION
STATION 2+00 TO STATION 3+30

CITY DRAWING NUMBER
SHEET 11 OF 27

CONSULTANT DRAWING NO. CT-11