

- REFERENCE NOTES**
- A. PAVEMENT DIMENSIONS ARE TO BACK OF CURB
 - B. BASELINE IS CENTRE LINE RIGHT-OF-WAY
 - C. PROPERTY LINES OBTAINED FROM CITY OF WINNIPEG L.B.I.S., AND NO SCALE FACTOR WAS APPLIED
 - D. REFER TO AECOM FIELD BOOK NO. 4809

- CONSTRUCTION NOTES**
1. PLACE NEW ASPHALTIC PAVEMENT TYPE1A (AVG THICKNESS 85mm)
 2. REMOVE EXISTING CONCRETE PAVEMENT AND CONSTRUCT NEW 150mm REINFORCED CONCRETE PAVEMENT *o/w* 85mm ASPHALTIC PAVEMENT
 3. REMOVE EXISTING FRAME AND COVER AND INSTALL NEW FRAME AND COVER (AP-005 AND AP-004)
 4. ADJUST EXISTING MANHOLE/CATCH BASIN TO GRADE
 5. INSTALL NEW CAST IRON RISER RING
 6. REMOVE EXISTING LIP CURB AND INSTALL NEW BARRIER CURB (100mm REVEAL HT. DOWELLED)
 7. REMOVE EXISTING CONCRETE PAVEMENT AND CONSTRUCT NEW 150mm REINFORCED CONCRETE PAVEMENT
 8. ADJUST EXISTING WATER VALVE TO GRADE
 9. ADJUST EXISTING CURB STOP
 10. REMOVE AND REINSTALL EXISTING PAVING STONES



METRIC
WHOLE NUMBERS INDICATE MILLIMETRES
DECIMALIZED NUMBERS INDICATE METRES

150 mm W.M.	150 mm W.M.	150 mm W.M.	HYDRO	---	---	---	---	---
WATERMAIN	HYDRANT	CONCRETE	M.T.S.	---	---	---	---	---
VALVE	CONCRETE	ASPHALT	CONCRETE	---	---	---	---	---
LAND DRAINAGE SEWER	ASPHALT	PROPERTY LINE	ASPHALT	---	---	---	---	---
WASTEWATER SEWER	MANHOLE	SURVEY BAR	PROPERTY LINE	---	---	---	---	---
CATCH BASIN	CURB INLET	ELEVATION	---	---	---	---	---	---
JUNCTIONS	CULVERT	FENCE	---	---	---	---	---	---
EXISTING	LEGEND - PLAN	PROPOSED	EXISTING	LEGEND - PLAN	PROPOSED	EXISTING	LEGEND - PROFILE	PROPOSED

LOCATION APPROVED UNDERGROUND STRUCTURES

SUPV. U/G STRUCTURES COMMITTEE DATE

NOTE:
LOCATION OF UNDERGROUND STRUCTURES AS SHOWN ARE BASED ON THE BEST INFORMATION AVAILABLE. BUT NO GUARANTEE IS GIVEN THAT ALL EXISTING UTILITIES ARE SHOWN OR THAT THE GIVEN LOCATIONS ARE EXACT. CONFIRMATION OF EXISTENCE AND EXACT LOCATION OF ALL SERVICES MUST BE OBTAINED FROM THE INDIVIDUAL UTILITIES BEFORE PROCEEDING WITH CONSTRUCTION.

B.M. ELEV.	55-024	S side Cottonwood Rd & Drake Blvd, Tbt in N conc frdn at W end St Bernadettes Catholic Church, #820 Cottonwood, 5m E of NW cr
A	231.844	
NO.	REVISIONS	DATE BY

AECOM

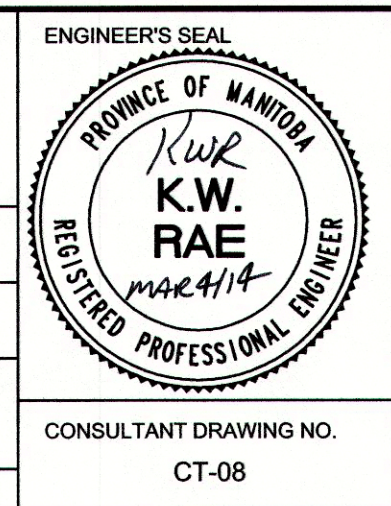
DESIGNED BY: BC/SS
DRAWN BY: PB/RT

CHECKED BY: KWR
APPROVED BY:

HOR. SCALE: 1:250
VERTICAL: 1:10

RELEASED FOR CONSTRUCTION BY: [Signature]
DATE: Mar 4/14

DATE: MARCH 2014



THE CITY OF WINNIPEG
PUBLIC WORKS DEPARTMENT
ENGINEERING DIVISION

2014 LOCAL STREET RENEWAL PROGRAM

CRESTWOOD CRES-COTTONWOOD ROAD-AUTUMNWOOD DRIVE
REHABILITATION
STATION 5+80 TO STATION 7+00

CITY DRAWING NUMBER: SHEET 08 OF 27

CONSULTANT DRAWING NO. CT-08