

REFERENCE NOTES

- A. PAVEMENT DIMENSIONS ARE TO BACK OF CURB
- B. BASELINE IS CENTRE LINE RIGHT-OF-WAY
- C. PROPERTY LINES OBTAINED FROM CITY OF WINNIPEG L.B.I.S., AND NO SCALE FACTOR WAS APPLIED
- D. REFER TO AECOM FIELD BOOK NO. 4809

CONSTRUCTION NOTES

1. PLACE NEW ASPHALTIC PAVEMENT TYPE1A (AVG THICKNESS 85mm)
2. REMOVE EXISTING CONCRETE PAVEMENT AND CONSTRUCT NEW 150mm REINFORCED CONCRETE PAVEMENT c/w 85mm ASPHALTIC PAVEMENT
3. REMOVE EXISTING FRAME AND COVER AND INSTALL NEW FRAME AND COVER (AP-004 AND AP-005)
4. ADJUST EXISTING MANHOLE TO GRADE
5. INSTALL NEW CAST IRON RISER RING
6. REMOVE EXISTING LIP CURB AND INSTALL NEW BARRIER CURB (100mm REVEAL HT. DOWELLED)
7. REMOVE EXISTING CATCHBASIN AND CURB INLET
8. ABANDON EXISTING LEAD
9. INSTALL NEW CURB AND GUTTER INLET c/w 1200 CATCHBASIN (SD-024) AND CONNECT TO EXISTING LEAD
10. INSTALL NEW CURB AND GUTTER INLET c/w 1200 CATCHBASIN (SD-024) AND CONNECT TO EXISTING MANHOLE
11. ADJUST EXISTING WATER VALVE TO GRADE
12. RENEW EXISTING 100mm CONCRETE SIDEWALK
13. ADJUST EXISTING CURB STOP
14. CONSTRUCT NEW CURB RAMP (10mm HT. MONOLITHIC)
15. REMOVE EXISTING CONCRETE PAVEMENT AND CONSTRUCT NEW 150mm REINFORCED CONCRETE PAVEMENT



METRIC
WHOLE NUMBERS INDICATE MILLIMETRES
DECIMALIZED NUMBERS INDICATE METRES

150 mm W.W.S.	WATERMAIN	150 mm W.M.	HYDRO	EXISTING	PROPOSED	EXISTING	PROPOSED	EXISTING	PROPOSED	EXISTING	PROPOSED
◇	HYDRANT	+	M.T.S.	---	---	---	---	---	---	---	---
⊙	VALVE	⊙	CONCRETE	---	---	---	---	---	---	---	---
⊙	LAND DRAINAGE SEWER	⊙	ASPHALT	---	---	---	---	---	---	---	---
⊙	WASTEWATER SEWER	⊙	PROPERTY LINE	---	---	---	---	---	---	---	---
○	MANHOLE	●	SURVEY BAR	---	---	---	---	---	---	---	---
□	CATCH BASIN	■	ELEVATION	---	---	---	---	---	---	---	---
▽	CURB INLET	▽	TREE	---	---	---	---	---	---	---	---
+	JUNCTIONS	+	SIDEWALK RAMP	---	---	---	---	---	---	---	---
▭	CULVERT	▭	CONCRETE SIDEWALK	---	---	---	---	---	---	---	---
---	GAS	---	FENCE	---	---	---	---	---	---	---	---
---	EXISTING	---	LEGEND - PLAN	---	---	---	---	---	---	---	---
---	LEGEND - PLAN	---	PROPOSED	---	---	---	---	---	---	---	---

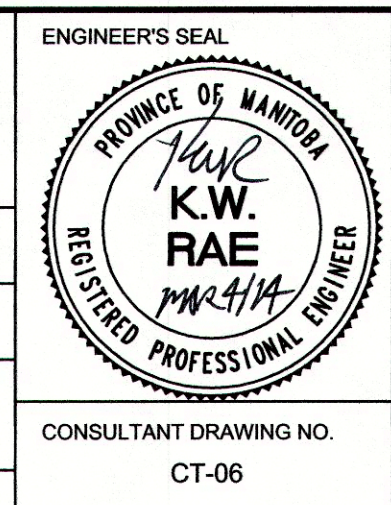
LOCATION APPROVED UNDERGROUND STRUCTURES

SUPV. U/G STRUCTURES COMMITTEE DATE

NOTE:
LOCATION OF UNDERGROUND STRUCTURES AS SHOWN ARE BASED ON THE BEST INFORMATION AVAILABLE. BUT NO GUARANTEE IS GIVEN THAT ALL EXISTING UTILITIES ARE SHOWN OR THAT THE GIVEN LOCATIONS ARE EXACT. CONFIRMATION OF EXISTENCE AND EXACT LOCATION OF ALL SERVICES MUST BE OBTAINED FROM THE INDIVIDUAL UTILITIES BEFORE PROCEEDING WITH CONSTRUCTION.

B.M. ELEV.	55-024	S side Cottonwood Rd & Drake Blvd, Tbt in N conc fndn at W end St Bernadettes Catholic Church, #820 Cottonwood, 5m E of NW cr
	231.844	

DESIGNED BY	BC/SS	CHECKED BY	KWR
DRAWN BY	PB/RT	APPROVED BY	
ISSUED FOR TENDER	03/04/2014	BC	
ISSUED FOR REVIEW	02/07/2014	BC	
NO. REVISIONS	DATE	BY	



THE CITY OF WINNIPEG
PUBLIC WORKS DEPARTMENT
ENGINEERING DIVISION

2014 LOCAL STREET RENEWAL PROGRAM

CRESTWOOD CRES-COTTONWOOD ROAD-AUTUMNWOOD DRIVE
REHABILITATION
STATION 3+40 TO STATION 4+60

CITY DRAWING NUMBER
SHEET 06 OF 27

CONSULTANT DRAWING NO. CT-06