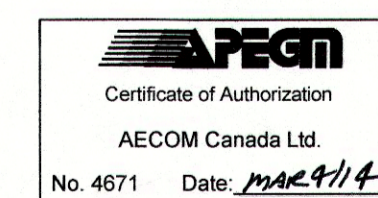


**REFERENCE NOTES**

- A. PAVEMENT DIMENSIONS ARE TO BACK OF CURB
- B. BASELINE IS CENTRE LINE RIGHT-OF-WAY
- C. PROPERTY LINES OBTAINED FROM CITY OF WINNIPEG L.B.I.S., AND NO SCALE FACTOR WAS APPLIED
- D. REFER TO AECOM FIELD BOOK NO. 4809

**CONSTRUCTION NOTES**

- 1. PLACE NEW ASPHALTIC PAVEMENT TYPE1A (AVG THICKNESS 85mm)
- 2. REMOVE EXISTING CONCRETE PAVEMENT AND CONSTRUCT NEW 150mm REINFORCED CONCRETE PAVEMENT c/w 85mm ASPHALTIC PAVEMENT
- 3. REMOVE EXISTING FRAME AND COVER AND INSTALL NEW FRAME AND COVER (AP-005 AND AP-004)
- 4. ADJUST EXISTING MANHOLE/CATCH BASIN TO GRADE
- 5. INSTALL NEW CAST IRON RISER RING
- 6. REMOVE EXISTING LIP CURB AND INSTALL NEW BARRIER CURB (100mm REVEAL HT. DOWELLED)
- 7. REMOVE EXISTING ASPHALTIC PAVEMENT
- 8. ADJUST EXISTING WATER VALVE TO GRADE
- 9. RENEW EXISTING 100mm CONCRETE SIDEWALK
- 10. ADJUST EXISTING CURB STOP
- 11. REMOVE EXISTING CONCRETE PAVEMENT AND CONSTRUCT NEW 150mm REINFORCED CONCRETE PAVEMENT



**METRIC**  
WHOLE NUMBERS INDICATE MILLIMETRES  
DECIMALIZED NUMBERS INDICATE METRES

EXISTING	LEGEND - PLAN	PROPOSED	EXISTING	LEGEND - PLAN	PROPOSED	EXISTING	LEGEND - PROFILE	PROPOSED
150 mm W.M.	WATERMAIN	150 mm W.M.	---	HYDRO	---	---	C PROFILE	---
300mm L.D.S.	LAND DRAINAGE SEWER	300mm L.D.S.	---	M.T.S.	---	---	NORTH/WEST GUTTER	---
250mm W.W.S.	WASTEWATER SEWER	250mm W.W.S.	---	CONCRETE	---	---	SOUTH/EAST GUTTER	---
○	MANHOLE	●	---	ASPHALT	---	---	N/W PROPERTY LINE	---
□	CATCH BASIN	■	---	PROPERTY LINE	---	---	S/E PROPERTY LINE	---
▽	CATCH PIT	▽	---	SURVEY BAR	---	---		
+	JUNCTIONS	+	---	ELEVATION	(35.750)	---		
▭	CULVERT	▭	---	TREE	---	---		
---	GAS	---	---	SIDEWALK RAMP	---	---		
---		---	---	CONCRETE SIDEWALK	---	---		
---		---	---	FENCE	---	---		

**LOCATION APPROVED UNDERGROUND STRUCTURES**

SUPV. U/G STRUCTURES COMMITTEE DATE

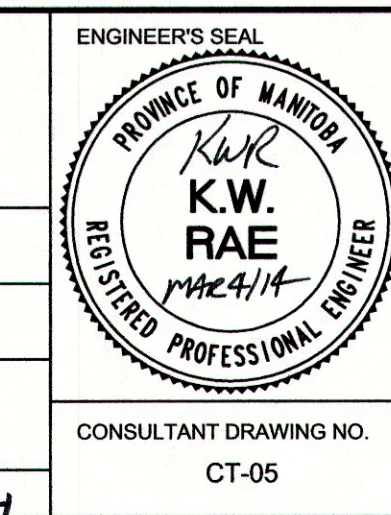
**NOTE:**  
LOCATION OF UNDERGROUND STRUCTURES AS SHOWN ARE BASED ON THE BEST INFORMATION AVAILABLE, BUT NO GUARANTEE IS GIVEN THAT ALL EXISTING UTILITIES ARE SHOWN OR THAT THE GIVEN LOCATIONS ARE EXACT. CONFIRMATION OF EXISTENCE AND EXACT LOCATION OF ALL SERVICES MUST BE OBTAINED FROM THE INDIVIDUAL UTILITIES BEFORE PROCEEDING WITH CONSTRUCTION.

B.M.	ELEV.	55-024	231.844	S side Cottonwood Rd & Drake Blvd, Tblt in N conc fndn at W and St Bernadettes Catholic Church, #820 Cottonwood, 5m E of NW cor
0	ISSUED FOR TENDER	03/04/2014	BC	
A	ISSUED FOR REVIEW	02/07/2014	BC	
NO.	REVISIONS	DATE	BY	

**AECOM**

DESIGNED BY: BC/SS  
DRAWN BY: PB/RT  
HOR. SCALE: 1:250  
VERTICAL: 1:10

CHECKED BY: KWR  
APPROVED BY:  
RELEASED FOR CONSTRUCTION BY:  
DATE: MARCH 2014



**THE CITY OF WINNIPEG**  
PUBLIC WORKS DEPARTMENT  
ENGINEERING DIVISION

2014 LOCAL STREET RENEWAL PROGRAM

CRESTWOOD CRES-COTTONWOOD ROAD-AUTUMNWOOD DRIVE REHABILITATION STATION 2+20 TO STATION 3+40

CITY DRAWING NUMBER: SHEET 05 OF 27

CONSULTANT DRAWING NO. CT-05