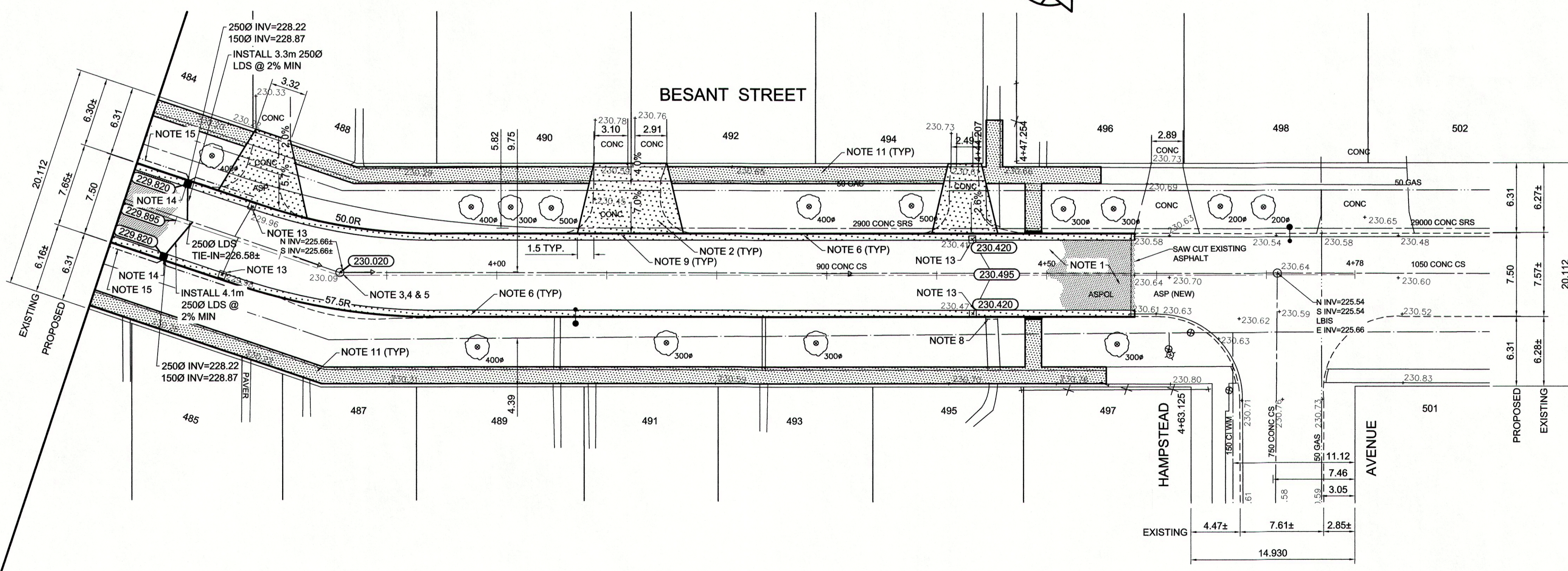


- REFERENCE NOTES**
- A. PAVEMENT DIMENSIONS ARE TO BACK OF CURB
  - B. BASELINE IS CENTRE LINE RIGHT-OF-WAY
  - C. PROPERTY LINES OBTAINED FROM CITY OF WINNIPEG L.B.I.S., AND NO SCALE FACTOR WAS APPLIED
  - D. REFER TO AECOM FIELD BOOK NO. 4810

- CONSTRUCTION NOTES**
1. REMOVE EXISTING CONCRETE PAVEMENT AND CONSTRUCT NEW ASPHALTIC PAVEMENT TYPE 1A (100mm)
  2. REMOVE EXISTING CONCRETE PAVEMENT AND CONSTRUCT NEW 150mm REINFORCED CONCRETE PAVEMENT
  3. REMOVE EXISTING FRAME AND COVER AND INSTALL NEW FRAME AND COVER (AP-005 AND AP-004)
  4. ADJUST EXISTING MANHOLE/CATCH BASIN TO GRADE
  5. INSTALL NEW CAST IRON RISER RING
  6. CONSTRUCT NEW BARRIER CURB AND GUTTER (180mm HT.)
  7. CONSTRUCT NEW MODIFIED BARRIER CURB AND GUTTER (180mm HT.)
  8. CONSTRUCT NEW CURB RAMP AND GUTTER (10mm HT.)
  9. CONSTRUCT NEW LIP CURB AND GUTTER (40mm HT. INTEGRAL)
  10. ADJUST EXISTING WATER VALVE TO GRADE
  11. RENEW EXISTING 100mm CONCRETE SIDEWALK
  12. ADJUST EXISTING CURB STOP
  13. REMOVE EXISTING CATCHBASIN AND ABANDON LEAD
  14. INSTALL NEW CURB AND GUTTER INLET c/w CATCHBASIN (SD-024) AND CONNECT TO EXISTING 900 CONC CS
  15. INSTALL 150mm SUBDRAIN



150mm W.W.S.	WATERMAIN	150mm W.W.S.	HYDRO	EXISTING	PROPOSED	EXISTING	PROPOSED	EXISTING	PROPOSED
◇	HYDRANT	+	M.T.S.	---	---	---	---	---	---
○	VALVE	○	CONCRETE	---	---	---	---	---	---
300mm L.D.S.	LAND DRAINAGE SEWER	300mm L.D.S.	ASPHALT	---	---	---	---	---	---
250mm W.W.S.	WASTEWATER SEWER	250mm W.W.S.	PROPERTY LINE	---	---	---	---	---	---
○	MANHOLE	●	SURVEY BAR	---	---	---	---	---	---
□	CATCH BASIN	■	ELEVATION	(35.750)					
▽	CURB PIT	▽	TREE						
+	JUNCTIONS	+	SIDEWALK RAMP	---	---	---	---	---	---
▭	CULVERT	▭	CONCRETE SIDEWALK	---	---	---	---	---	---
---	GAS	---	FENCE	---	---	---	---	---	---
---	EXISTING	---	LEGEND - PLAN	---	---	---	---	---	---
---	LEGEND - PLAN	---	PROPOSED	---	---	---	---	---	---
---	EXISTING	---	LEGEND - PROFILE	---	---	---	---	---	---
---	LEGEND - PROFILE	---	PROPOSED	---	---	---	---	---	---

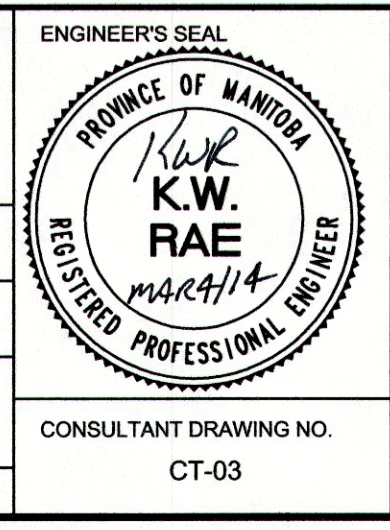
**LOCATION APPROVED UNDERGROUND STRUCTURES**

SUPV. U/G STRUCTURES COMMITTEE DATE

**NOTE:**  
LOCATION OF UNDERGROUND STRUCTURES AS SHOWN ARE BASED ON THE BEST INFORMATION AVAILABLE. BUT NO GUARANTEE IS GIVEN THAT ALL EXISTING UTILITIES ARE SHOWN OR THAT THE GIVEN LOCATIONS ARE EXACT. CONFIRMATION OF EXISTENCE AND EXACT LOCATION OF ALL SERVICES MUST BE OBTAINED FROM THE INDIVIDUAL UTILITIES BEFORE PROCEEDING WITH CONSTRUCTION.

B.M. ELEV.	85R599	In CPR Keswatin Subd. ROW & Nottingham Ave. Tbt on pipe, 11.6m S of N.L. Nottingham Ave & 5.2m E of W.L. of CPR ROW
231.031		

DESIGNED BY	BC/SS	CHECKED BY	KWR
DRAWN BY	PB/RT	APPROVED BY	
HOR. SCALE:	1:250	RELEASED FOR CONSTRUCTION BY:	
VERTICAL:	1:10	DATE	Mar 4/14
NO. REVISIONS		DATE	
		BY	
		DATE	MARCH 2014



**THE CITY OF WINNIPEG**  
PUBLIC WORKS DEPARTMENT  
ENGINEERING DIVISION

2014 LOCAL STREET RENEWAL PROGRAM

BESANT STREET - MOLSON STREET- HAMPSTEAD AVENUE  
ASPHALT RECONSTRUCTION  
STATION 3+65 TO HAMPSTEAD AVENUE

CITY DRAWING NUMBER  
SHEET 03 OF 27

CONSULTANT DRAWING NO. CT-03