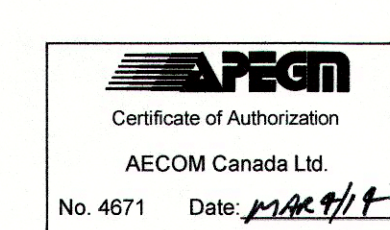
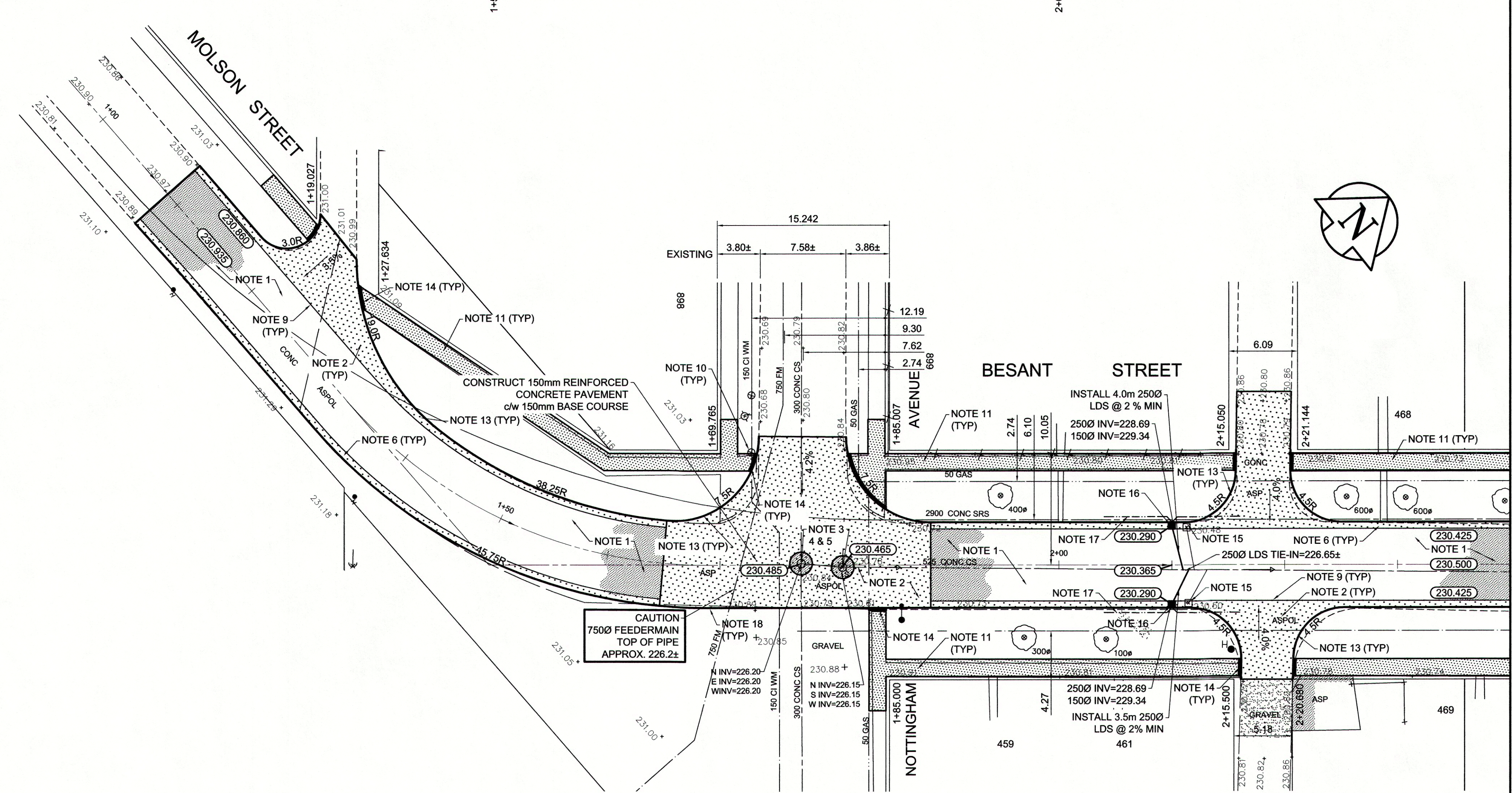


TYPICAL CROSS SECTION

- REFERENCE NOTES**
- A. PAVEMENT DIMENSIONS ARE TO BACK OF CURB
 - B. BASELINE IS CENTRE LINE RIGHT-OF-WAY
 - C. PROPERTY LINES OBTAINED FROM CITY OF WINNIPEG L.B.I.S., AND NO SCALE FACTOR WAS APPLIED
 - D. REFER TO AECOM FIELD BOOK NO. 4810
 - E. EXISTING PAVEMENT SHALL BE SAW CUT AND REMOVED WITHIN 3.0m OF THE EXISTING 750mm FEEDERMAIN (NO JACK HAMMERING PERMITTED)

- CONSTRUCTION NOTES**
1. REMOVE EXISTING CONCRETE PAVEMENT AND CONSTRUCT NEW ASPHALTIC PAVEMENT TYPE 1A (100mm)
 2. REMOVE EXISTING CONCRETE PAVEMENT AND CONSTRUCT NEW 150mm REINFORCED CONCRETE PAVEMENT
 3. REMOVE EXISTING FRAME AND COVER AND INSTALL NEW FRAME AND COVER (AP-005 AND AP-004)
 4. ADJUST EXISTING MANHOLE/CATCH BASIN TO GRADE
 5. INSTALL NEW CAST IRON RISER RING
 6. CONSTRUCT NEW BARRIER CURB AND GUTTER (180mm HT.)
 7. CONSTRUCT NEW MODIFIED BARRIER CURB AND GUTTER (180mm HT.)
 8. CONSTRUCT NEW CURB RAMP AND GUTTER (10mm HT.)
ant
 9. CONSTRUCT NEW LIP CURB AND GUTTER (40mm HT. INTEGRAL)
 10. ADJUST EXISTING WATER VALVE TO GRADE
 11. RENEW EXISTING 100mm CONCRETE SIDEWALK
 12. ADJUST EXISTING CURB STOP
 13. CONSTRUCT NEW MODIFIED BARRIER CURB (180mm HT. INTEGRAL)
 14. CONSTRUCT NEW RAMP CURB (10mm HT. INTEGRAL)
 15. REMOVE EXISTING CATCHBASIN AND ABANDON LEAD
 16. INSTALL NEW CURB AND GUTTER INLET c/w CATCHBASIN (SD-024) AND CONNECT TO EXISTING 525 CONC CS
 17. INSTALL 150mm SUBDRAIN
 18. CONSTRUCT NEW MOUNTABLE CURB (120mm HT. INTEGRAL)



METRIC
WHOLE NUMBERS INDICATE MILLIMETRES
DECIMALIZED NUMBERS INDICATE METRES

150mm W.W.S.	WATERMAIN	150mm W.W.S.	HYDRO	EXISTING	PROPOSED	EXISTING	PROPOSED	EXISTING	PROPOSED
◇	HYDRANT	+	M.T.S.	---	---	---	---	---	---
⊙	VALVE	⊙	CONCRETE	---	---	---	---	---	---
⊙	LAND DRAINAGE SEWER	⊙	ASPHALT	---	---	---	---	---	---
⊙	WASTEWATER SEWER	⊙	PROPERTY LINE	---	---	---	---	---	---
○	MANHOLE	●	SURVEY BAR	---	---	---	---	---	---
□	CATCH BASIN	■	ELEVATION	---	---	---	---	---	---
▽	CATCH PIT	▽	TREE	---	---	---	---	---	---
+	JUNCTIONS	+	SIDEWALK RAMP	---	---	---	---	---	---
▭	CULVERT	▭	CONCRETE SIDEWALK	---	---	---	---	---	---
---	GAS	---	FENCE	---	---	---	---	---	---
---	EXISTING	---	LEGEND - PLAN	---	---	---	---	---	---
---	PROPOSED	---	LEGEND - PROFILE	---	---	---	---	---	---

LOCATION APPROVED UNDERGROUND STRUCTURES

DATE: _____

NOTE: LOCATION OF UNDERGROUND STRUCTURES AS SHOWN ARE BASED ON THE BEST INFORMATION AVAILABLE, BUT NO GUARANTEE IS GIVEN THAT ALL EXISTING UTILITIES ARE SHOWN OR THAT THE GIVEN LOCATIONS ARE EXACT. CONFIRMATION OF EXISTENCE AND EXACT LOCATION OF ALL SERVICES MUST BE OBTAINED FROM THE INDIVIDUAL UTILITIES BEFORE PROCEEDING WITH CONSTRUCTION.

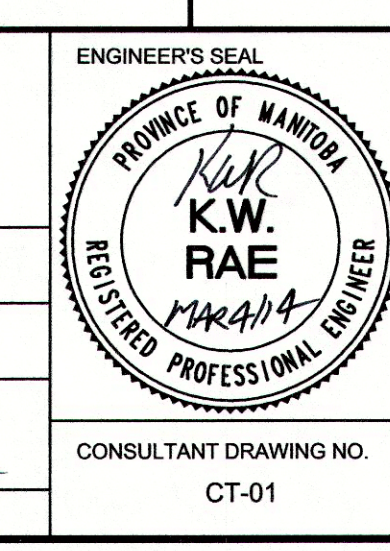
B.M.	85R599	In CPR Kewatin Subd. ROW & Nottingham Ave. Tbl on pipe, 11.6m S of N.L. Nottingham Ave & 5.2m E of WL of CPR ROW
ELEV.	231.031	

AECOM

DESIGNED BY: BC/SS
DRAWN BY: PB/RT
HOR. SCALE: 1:250
VERTICAL: 1:10

CHECKED BY: KWR
APPROVED BY: _____
RELEASED FOR CONSTRUCTION BY: _____

DATE: MARCH 2014



THE CITY OF WINNIPEG
PUBLIC WORKS DEPARTMENT
ENGINEERING DIVISION

2014 LOCAL STREET RENEWAL PROGRAM

BESANT STREET-MOLSON STREET-HAMPSTEAD AVENUE ASPHALT RECONSTRUCTION
MOLSON STREET TO STATION 2+40

CITY DRAWING NUMBER: SHEET 01 OF 27

CONSULTANT DRAWING NO. CT-01