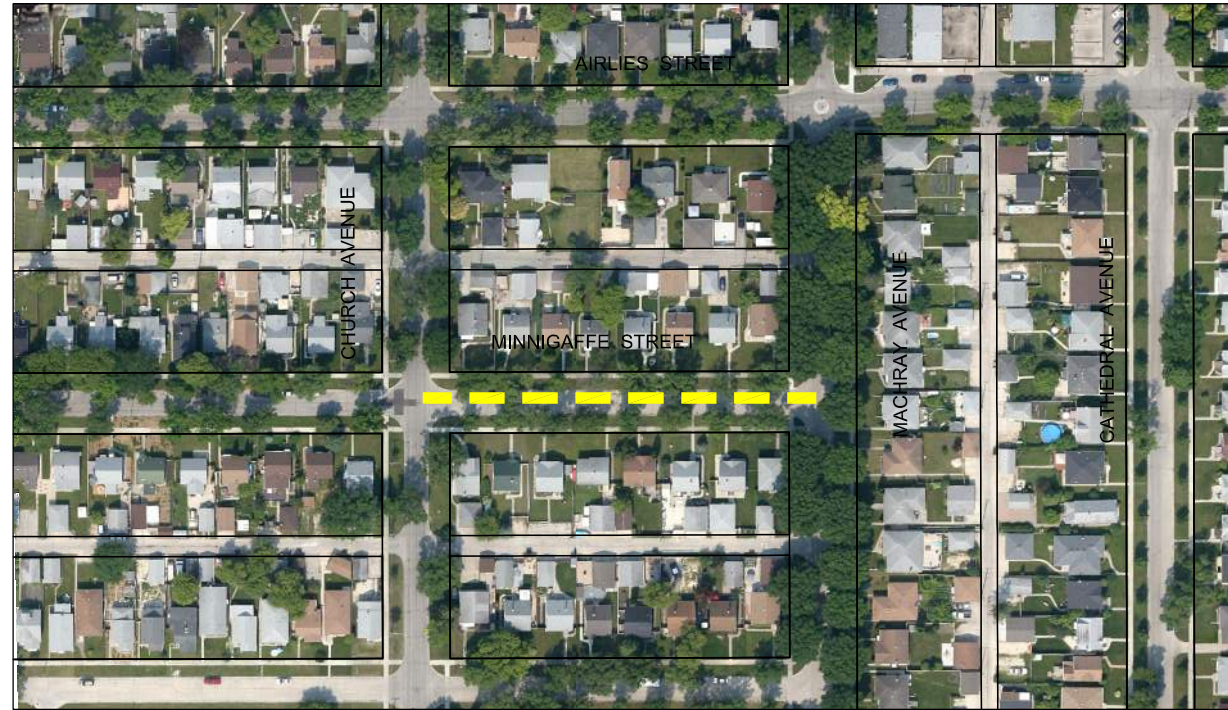
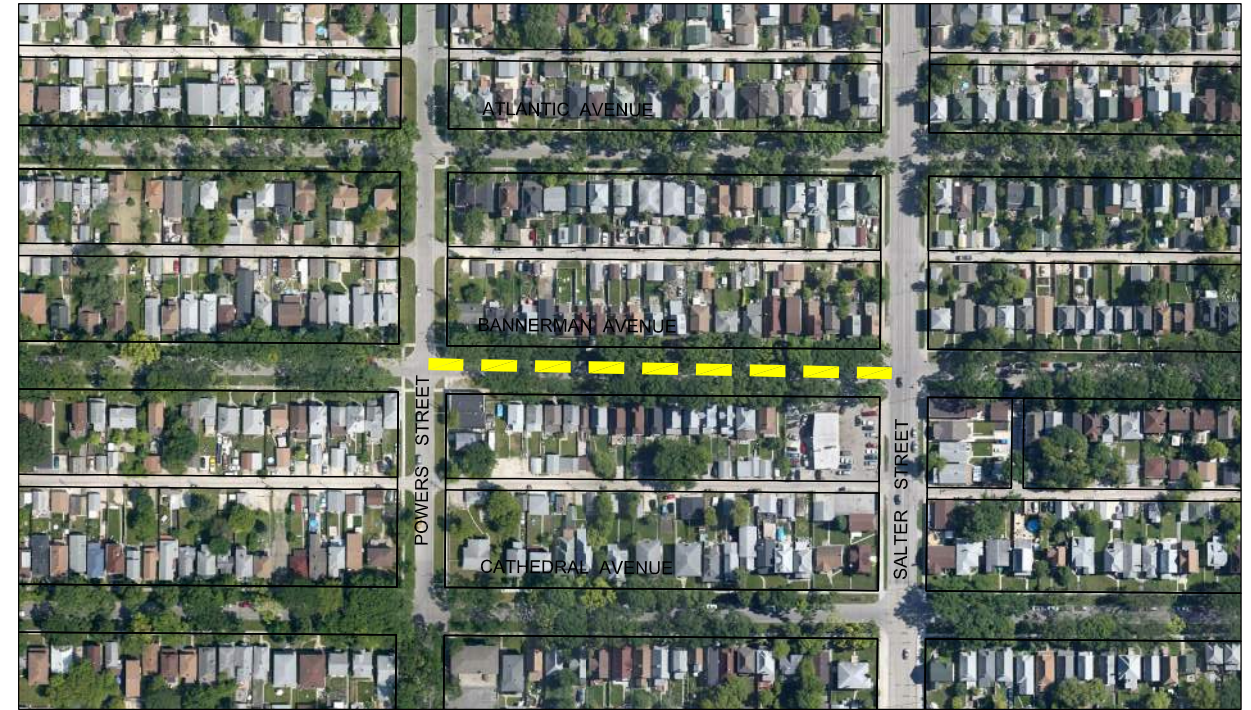
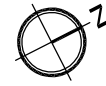


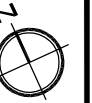
Jun 02, 2014 - 4:17pm  
 P:\5514001-5514099\5514040 - 2014 TBO Consulting Services\MMM drawings\Contract-3\5514040-2014.03-Contract Dwg-3 - May-30.dwg - tab.15



**MINNIGAFFE STREET - MACHRAY AVENUE TO CHURCH AVENUE**  
 SCALE NTS



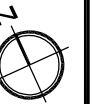
**BANNERMAN AVENUE - POWERS STREET TO SALTER STREET**  
 SCALE NTS



**REDWOOD AVENUE - PARR STREET TO ARLINGTON STREET**  
 SCALE NTS



**ABERDEEN AVENUE - SINCLAIR STREET TO ARLINGTON STREET**  
 SCALE NTS



**METRIC**  
 WHOLE NUMBERS INDICATE MILLIMETRES  
 DECIMALIZED NUMBERS INDICATE METRES

**LEGEND**

- LIMIT OF CONSTRUCTION
- BUS ROUTE
- SCHOOL LOCATION

**LOCATIONS APPROVED**  
 UNDERGROUND STRUCTURES

SIGNED BY: \_\_\_\_\_  
 SUPPLY U/G STRUCTURES DATE

LOCATION OF UNDERGROUND STRUCTURES AS SHOWN ARE BASED ON THE BEST INFORMATION AVAILABLE BUT NO GUARANTEE IS GIVEN THAT ALL EXISTING UTILITIES ARE SHOWN OR THAT THE GIVEN LOCATIONS ARE EXACT CONFIRMATION OF EXISTENCE AND EXACT LOCATION OF ALL SERVICES MUST BE OBTAINED FROM THE INDIVIDUAL UTILITIES BEFORE PROCEEDING

G.B.M. -	ELEV. -	DATE	BY
0	ISSUED FOR TENDER	14/05/09	VMM
NO.	REVISIONS	DATE	BY

		MMM Group Limited Suite 111 - 93 Lombard Ave. Winnipeg, MB R3B 3B1 t. 204.943.3178 f. 204.943.4948 www.mmmgrouplimited.com	
DESIGNED BY	VMM/BD	CHECKED BY	BD
DRAWN BY	SB	APPROVED BY	VMM
HOR. SCALE NTS	VERTICAL	RELEASED FOR CONSTRUCTION	
DATE	14/05/30	DATE	

ENGINEER'S SEAL  
  
 CONSULTANT ACAD DWG. NO.  
 5514040-2014.3-15

**THE CITY OF WINNIPEG**  
 PUBLIC WORKS DEPARTMENT  
 ENGINEERING DIVISION

**2014 THIN BITUMINOUS OVERLAY (TBO) PROGRAM**

MINNIGAFFE STREET, BANNERMAN AVENUE,  
 REDWOOD AVENUE, ABERDEEN AVENUE,

CITY DRAWING NO.  
 SHEET 2 OF 6  
 DRAWING NO. REV.  
 15 0

NOTE: These design documents are prepared solely for the use by the party with whom the design professional has entered into a contract and there are no representations of any kind made by the design professional to any party with whom the design professional has not entered into a contract.