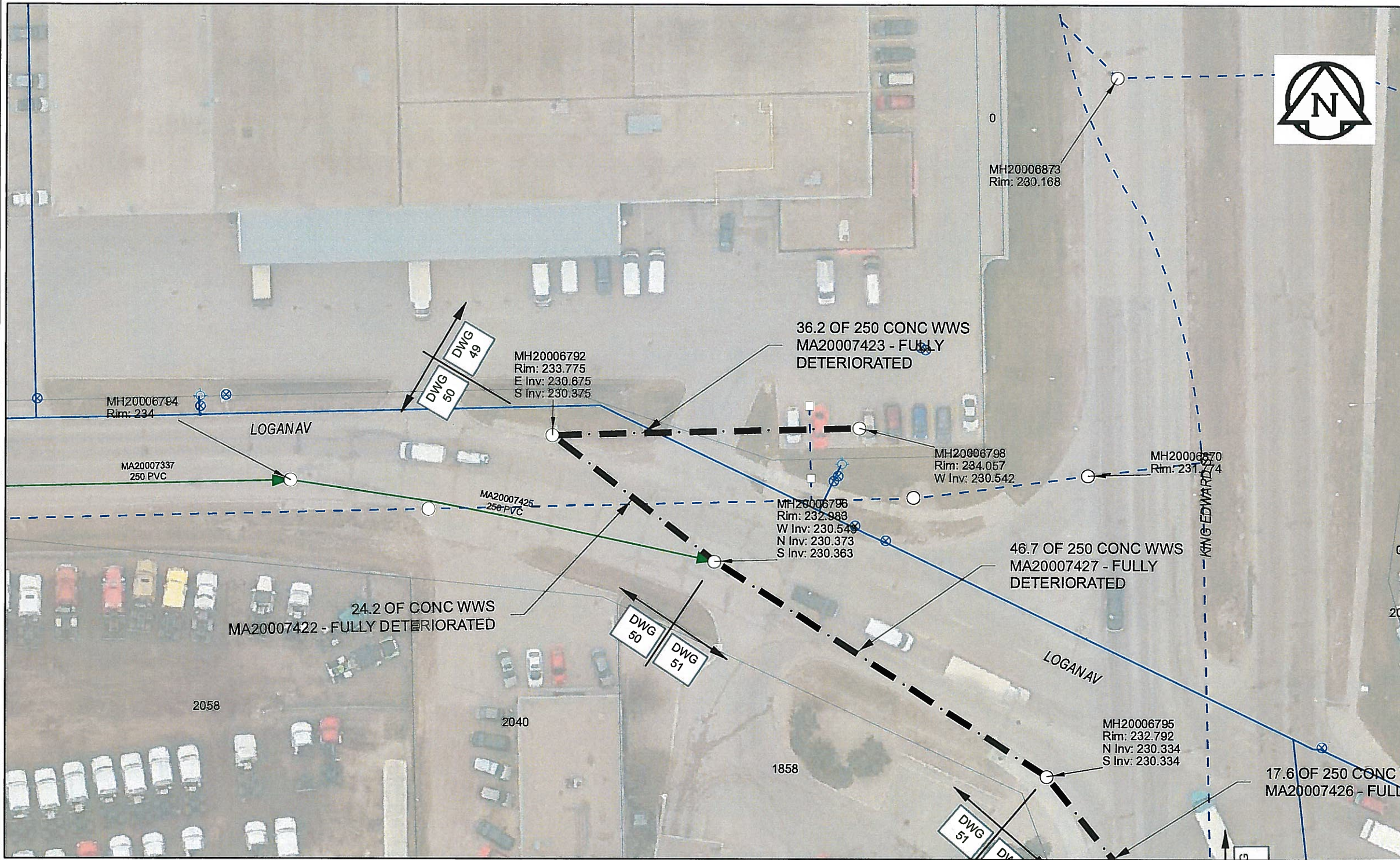


B SIZE 11" X 17" (279mm x 432mm)



Sewer Junction Information
(From Video Inspection)

Reference MH	Distance	Size	Clock
-	-	-	-



WARNING

IF POWER EQUIPMENT OR EXPLOSIVES ARE TO BE USED FOR EXCAVATION ON THIS PROJECT, THE CONTRACTOR MUST:

- 1) NOTIFY THE GAS COMPANY OF THE PROPOSED LOCATION OF EXCAVATION.
- 2) TAKE PRECAUTION TO AVOID DAMAGE TO GAS COMPANY INSTALLATIONS.

SEE PROVINCIAL REGULATION 140/92 FOR DETAILS

APEGM
Certificate of Authorization
AECOM Canada Ltd.
No. 4671 Date: *07 Jan 2015*

METRIC
WHOLE NUMBERS INDICATE MILLIMETRES
DECIMALIZED NUMBERS INDICATE METRES

0 2.5 5 10 15 20
Meters

BID OPPORTUNITY NO. 557-2014

AECOM REVIEW DRFT CHK

LOCATION APPROVED
UNDERGROUND STRUCTURES

SUPR. U/G STRUCTURES DATE COMMITTEE

NOTE:
LOCATION OF UNDERGROUND STRUCTURES AS SHOWN ARE BASED ON THE BEST INFORMATION AVAILABLE. BUT NO GUARANTEE IS GIVEN THAT ALL EXISTING UTILITIES ARE SHOWN OR THAT THE GIVEN LOCATIONS ARE EXACT. CONFIRMATION OF EXISTENCE AND EXACT LOCATION OF ALL SERVICES MUST BE OBTAINED FROM THE INDIVIDUAL UTILITIES BEFORE PROCEEDING WITH CONSTRUCTION.

NO.	ISSUED FOR TENDER	DATE	BY
0	ISSUED FOR TENDER	14/12/04	JD
NO.	REVISIONS	YY/MM/DD	BY

AECOM

DESIGNED BY	PL	CHECKED BY	<i>[Signature]</i>
DRAWN BY	JD	APPROVED BY	<i>[Signature]</i>
HOR. SCALE	1:500	RELEASED FOR CONSTRUCTION	<i>[Signature]</i>
VERT. SCALE	N/A	DATE	<i>Jan 8/15</i>

PROFESSIONAL'S SEAL

PROVINCE OF MANITOBA
[Signature]
K.W. FITCHETT
Jan 8/15
REGISTERED ENGINEER

CONSULTANT DRAWING NO.
60321545-01-C-2014 Lining-R0X.mxd

THE CITY OF WINNIPEG
WATER AND WASTE DEPARTMENT

2014 SEWER RENEWALS
BY CIPP LINING
CONTRACT 11
LOGAN AV
1ST MH W TO 2ND MH W OF KING EDWARD ST (NPL)

SHEET 49 OF 61
CITY DRAWING NUMBER
10791 REV 0