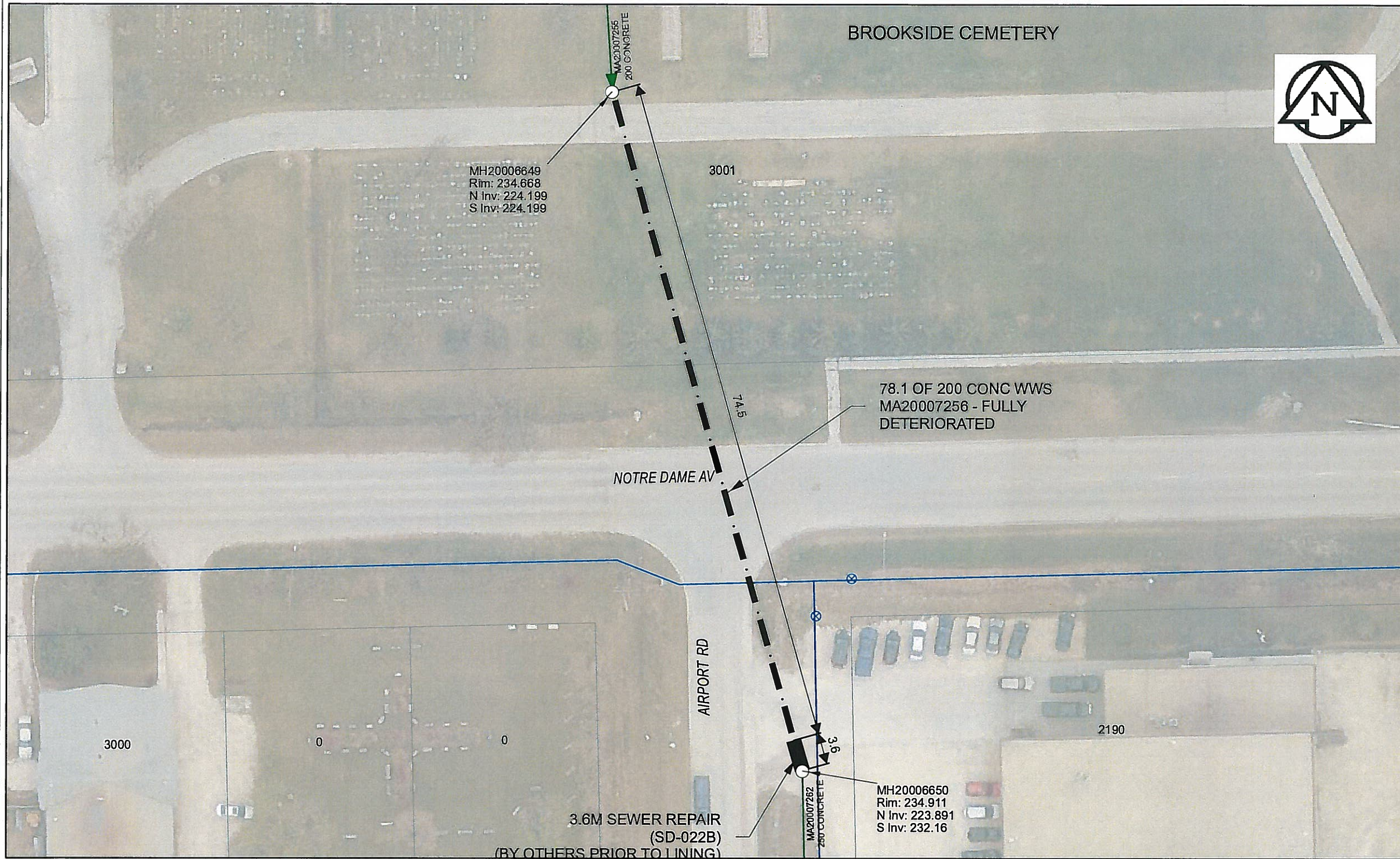


B SIZE 11" X 17" (279mm x 432mm)



Sewer Junction Information
(From Video Inspection)

Reference MH	Distance	Size	Clock
-	-	-	-

WARNING
IF POWER EQUIPMENT OR EXPLOSIVES ARE TO BE USED FOR EXCAVATION ON THIS PROJECT, THE CONTRACTOR MUST:
1) NOTIFY THE GAS COMPANY OF THE PROPOSED LOCATION OF EXCAVATION.
2) TAKE PRECAUTION TO AVOID DAMAGE TO GAS COMPANY INSTALLATIONS.
SEE PROVINCIAL REGULATION 140/92 FOR DETAILS

AECOM
Certificate of Authorization
AECOM Canada Ltd.
No. 4671 Date: *07 Jan 2015*

METRIC
WHOLE NUMBERS INDICATE MILLIMETRES
DECIMALIZED NUMBERS INDICATE METRES

BID OPPORTUNITY NO. 557-2014

AECOM REVIEW DRFT CHK

LOCATION APPROVED
UNDERGROUND STRUCTURES

SUPR. U/G STRUCTURES COMMITTEE	DATE

NOTE:
LOCATION OF UNDERGROUND STRUCTURES AS SHOWN ARE BASED ON THE BEST INFORMATION AVAILABLE. BUT NO GUARANTEE IS GIVEN THAT ALL EXISTING UTILITIES ARE SHOWN OR THAT THE GIVEN LOCATIONS ARE EXACT. CONFIRMATION OF EXISTENCE AND EXACT LOCATION OF ALL SERVICES MUST BE OBTAINED FROM THE INDIVIDUAL UTILITIES BEFORE PROCEEDING WITH CONSTRUCTION.

Can-Net GPS Reference Station WINN/810			
NO.	REVISIONS	YY/MM/DD	BY
0	ISSUED FOR TENDER	14/12/04	JD

AECOM

DESIGNED BY	PL	CHECKED BY	<i>[Signature]</i>
DRAWN BY	JD	APPROVED BY	<i>[Signature]</i>
HOR. SCALE	1:500	RELEASED FOR CONSTRUCTION	<i>[Signature]</i>
VERT. SCALE	N/A	DATE	<i>Jan 8/15</i>

PROFESSIONAL'S SEAL
PROVINCE OF MANITOBA
[Signature]
K.W. FITCHETT
REGISTERED ENGINEER
CONSULTANT DRAWING NO. 80321545-01-C-2014 Lining-ROX.mxd

THE CITY OF WINNIPEG
WATER AND WASTE DEPARTMENT

2014 SEWER RENEWALS
BY CIPP LINING
CONTRACT 11
AIRPORT RD EXT
1ST MH N OF NOTRE DAME AV TO 1ST MH S OF NOTRE DAME AV

SHEET 46 OF 61
CITY DRAWING NUMBER
10788 REV 0