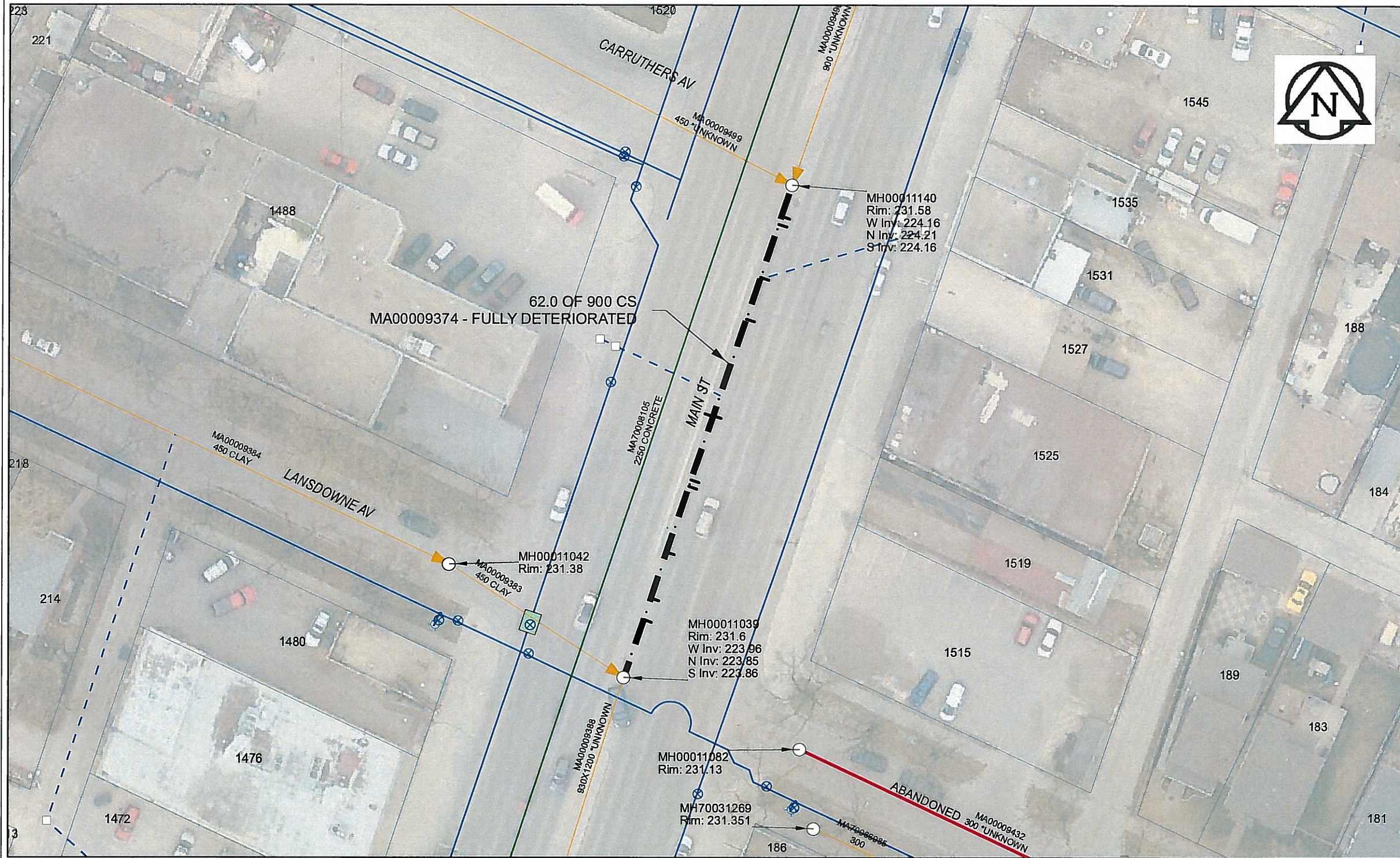


B SIZE 11" X 17" (279mm x 432mm)



Sewer Junction Information
(From Video Inspection)

Reference MH	Distance	Size	Clock
S-MH00011140	003.9	150	11
-	004.9	150	11
-	011.5	150	11
-	016.7	150	10
-	028.7	150	10
-	028.8	150	02
-	036.7	150	10
-	037.5	150	10
-	045.7	150	10
-	051.4	150	10
-	054.1	150	10

WARNING
IF POWER EQUIPMENT OR EXPLOSIVES ARE TO BE USED FOR EXCAVATION ON THIS PROJECT, THE CONTRACTOR MUST:
1) NOTIFY THE GAS COMPANY OF THE PROPOSED LOCATION OF EXCAVATION.
2) TAKE PRECAUTION TO AVOID DAMAGE TO GAS COMPANY INSTALLATIONS.
SEE PROVINCIAL REGULATION 140/92 FOR DETAILS

APECM
Certificate of Authorization
AECOM Canada Ltd.
No. 4671 Date: 07 Jan 2015

METRIC
WHOLE NUMBERS INDICATE MILLIMETRES
DECIMALIZED NUMBERS INDICATE METRES
0 2.5 5 10 15 20
Meters

BID OPPORTUNITY NO. 557-2014

AECOM REVIEW DRFT CHK

LOCATION APPROVED UNDERGROUND STRUCTURES
Can-Net GPS Reference Station WINN/810
SUPR. U/G STRUCTURES DATE COMMITTEE
NOTE:
LOCATION OF UNDERGROUND STRUCTURES AS SHOWN ARE BASED ON THE BEST INFORMATION AVAILABLE. BUT NO GUARANTEE IS GIVEN THAT ALL EXISTING UTILITIES ARE SHOWN OR THAT THE GIVEN LOCATIONS ARE EXACT. CONFIRMATION OF EXISTENCE AND EXACT LOCATION OF ALL SERVICES MUST BE OBTAINED FROM THE INDIVIDUAL UTILITIES BEFORE PROCEEDING WITH CONSTRUCTION.

NO.	ISSUED FOR TENDER	14/12/04	JD
NO.	REVISIONS	YY/MM/DD	BY
0	ISSUED FOR TENDER	14/12/04	JD

AECOM

DESIGNED BY	PL	CHECKED BY	<i>[Signature]</i>
DRAWN BY	JD	APPROVED BY	<i>[Signature]</i>
HOR. SCALE	1:500	RELEASED FOR CONSTRUCTION	<i>[Signature]</i>
VERT. SCALE	N/A	DATE	Jan 8/15

PROFESSIONAL'S SEAL
PROVINCE OF MANITOBA
K.W. FITCHETT
Jan 8/15
REGISTERED ENGINEER
CONSULTANT DRAWING NO. 60321545-01-C-2014 Lining-R0X.mxd

THE CITY OF WINNIPEG
WATER AND WASTE DEPARTMENT
2014 SEWER RENEWALS
BY CIPP LINING
CONTRACT 11
MAIN ST
MH AT CARRUTHERS AV TO MH AT LANSDOWNE AV

SHEET 5 OF 61
CITY DRAWING NUMBER
10747 REV 0