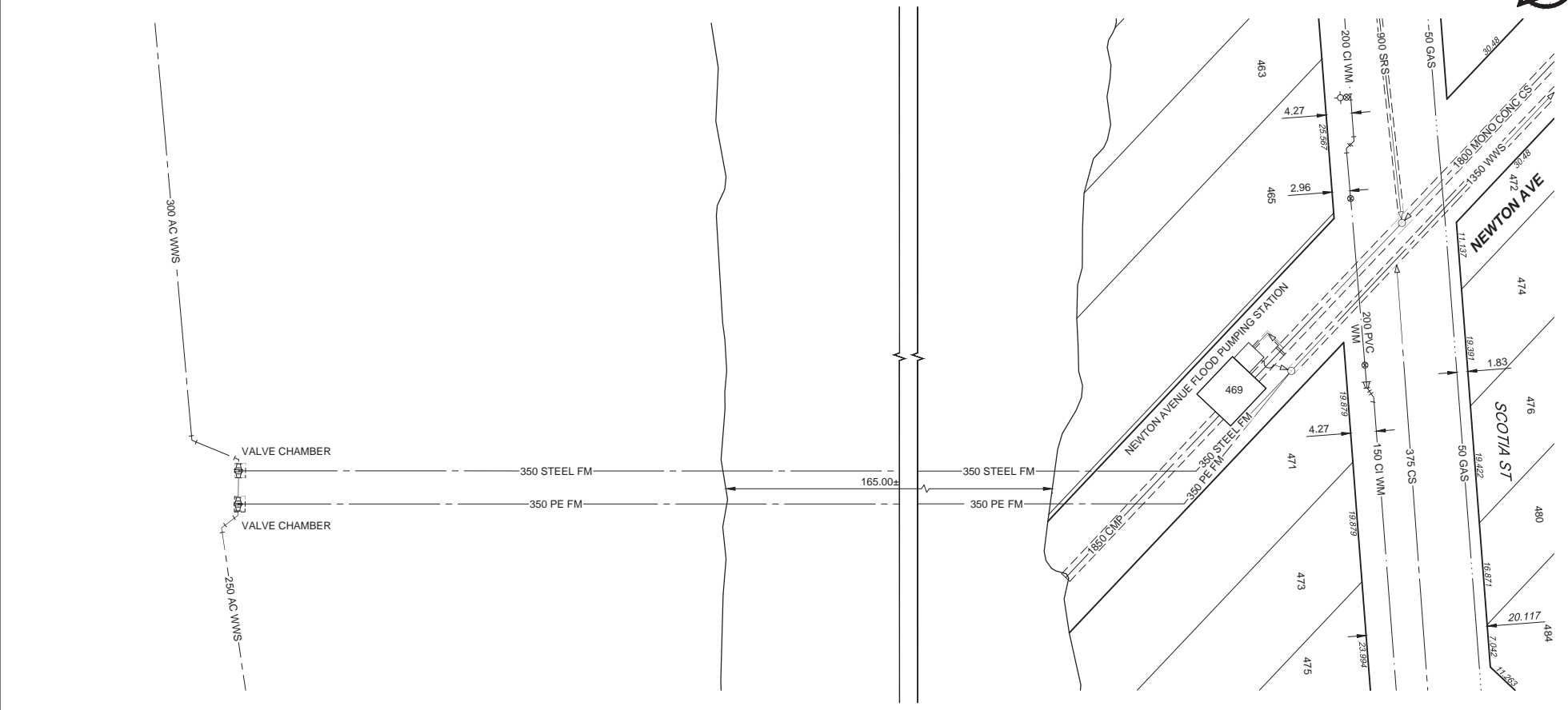
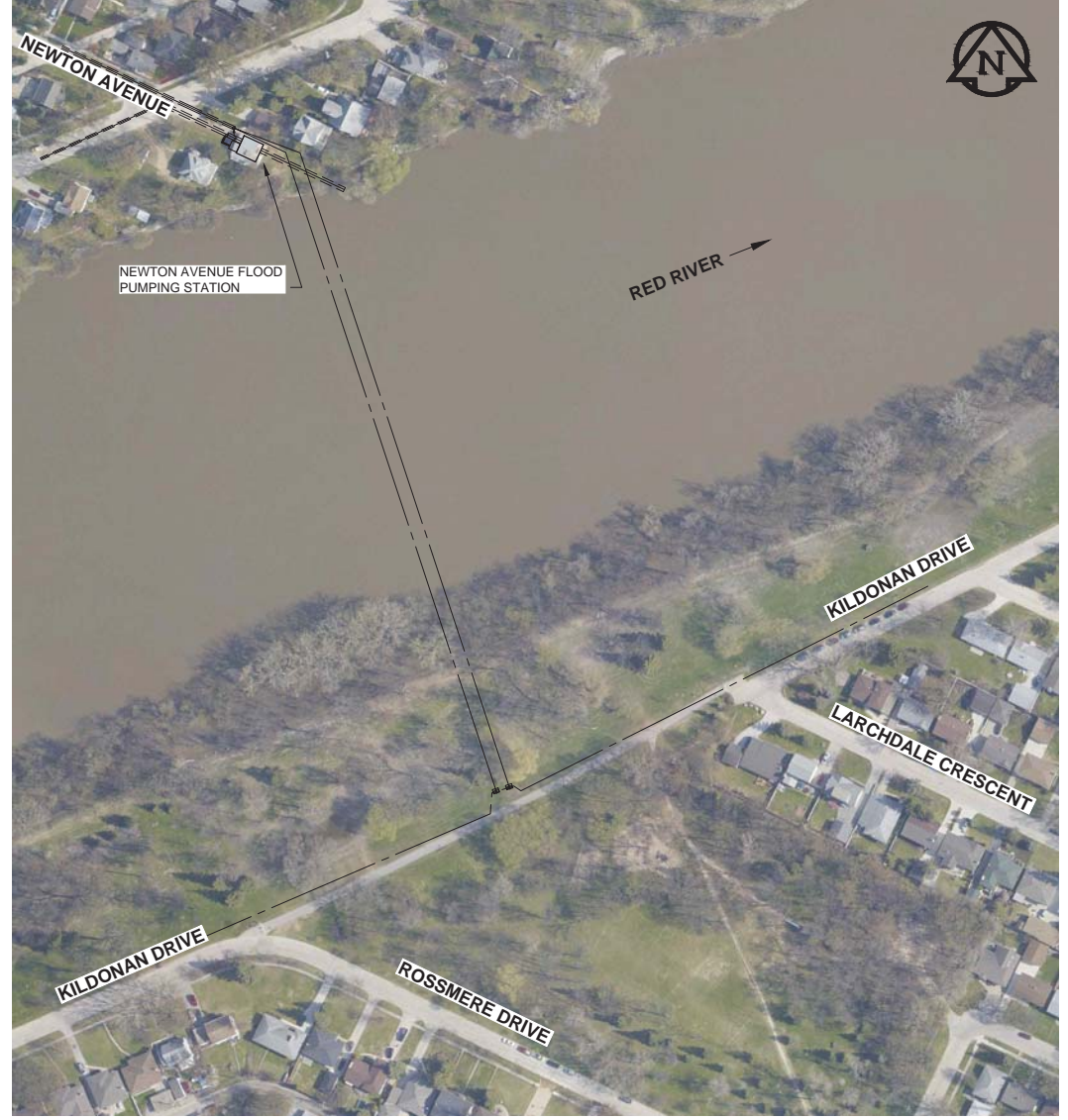


# **Appendix A**

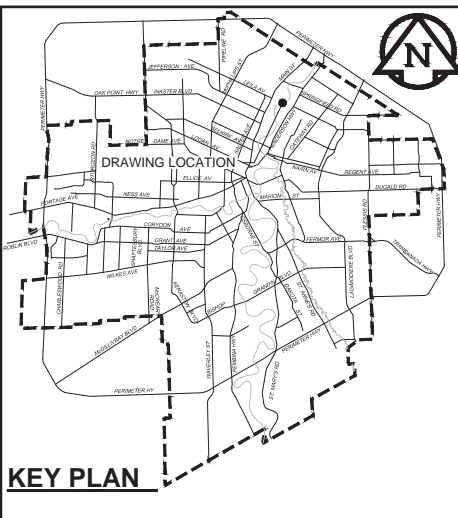
## **Site Drawings**



**PLAN**  
 Scale 1:500  
 0 12.5 25 m



**SITE PLAN**  
 Scale 1:1500  
 0 37.5 75 m



**KEY PLAN**  
 FOR INFORMATION ONLY  
 BID OPPORTUNITY NO. XXX-XXXX

**WARNING**  
 IF POWER EQUIPMENT OR EXPLOSIVES ARE TO BE USED FOR EXCAVATION ON THIS PROJECT, THE CONTRACTOR MUST:  
 1) NOTIFY THE GAS COMPANY OF THE PROPOSED LOCATION OF EXCAVATION.  
 2) TAKE PRECAUTION TO AVOID DAMAGE TO GAS COMPANY INSTALLATIONS.  
 SEE PROVINCIAL REGULATION 140/92 FOR DETAILS

**METRIC**  
 WHOLE NUMBERS INDICATE MILLIMETRES  
 DECIMALIZED NUMBERS INDICATE METRES

**APEGM**  
 Certificate of Authorization  
 AECOM Canada Ltd.  
 No. 4671 Date: \_\_\_\_\_

150 WM	WATERMAIN	150 WM	♂	CURB STOP	150 WM	WATERMAIN	150 WM
⊖	HYDRANT	⊖	⊖	REDUCER	⊖	HYDRANT	⊖
⊙	VALVE	⊙	⊙	COUPLING	⊙	VALVE	⊙
300 LDS	LAND DRAINAGE SEWER	300 LDS	⊕	ANODE	300 LDS	LAND DRAINAGE SEWER	300 LDS
250 WWS	WASTE WATER SEWER	250 WWS	⊕	HYDRO	250 WWS	WASTE WATER SEWER	250 WWS
○	MANHOLE	●	⊕	MTS	⊕	PAVEMENT CROWN	⊕
□	CATCH BASIN	■	⊕	GAS	⊕	N/W PROPERTY LINE	⊕
△	CURB INLET	▲	⊕	TESTHOLE	⊕	S/E PROPERTY LINE	⊕
⊖	CULVERT	⊖	⊕	LAMP STANDARD	⊕	N/W GUTTER	⊕
⊖	PIPE ABANDONMENTS	⊖	⊕	TREE	⊕	S/E GUTTER	⊕
⊕	SURVEY BAR	⊕	⊕				
EXISTING	LEGEND - PLAN	NEW	EXISTING	LEGEND - PLAN	NEW	EXISTING	LEGEND - PROFILE

**LOCATION APPROVED**  
 UNDERGROUND STRUCTURES  
 SUPPR. U/G STRUCTURES DATE COMMITTEE  
 NOTE:  
 LOCATION OF UNDERGROUND STRUCTURES AS SHOWN ARE BASED ON THE BEST INFORMATION AVAILABLE. BUT NO GUARANTEE IS GIVEN THAT ALL EXISTING UTILITIES ARE SHOWN OR THAT THE GIVEN LOCATIONS ARE EXACT. CONFIRMATION OF EXISTENCE AND EXACT LOCATION OF ALL SERVICES MUST BE OBTAINED FROM THE INDIVIDUAL UTILITIES BEFORE PROCEEDING WITH CONSTRUCTION.

0	ISSUED FOR INFORMATION	13/09/10	KLC
NO.	REVISIONS	YY/MM/DD	BY

**AECOM**

DESIGNED BY	ADB	CHECKED BY	
DRAWN BY	ADL	APPROVED BY	
HOR. SCALE	AS NOTED	RELEASED FOR CONSTRUCTION	
VERT. SCALE	N/A	DATE	

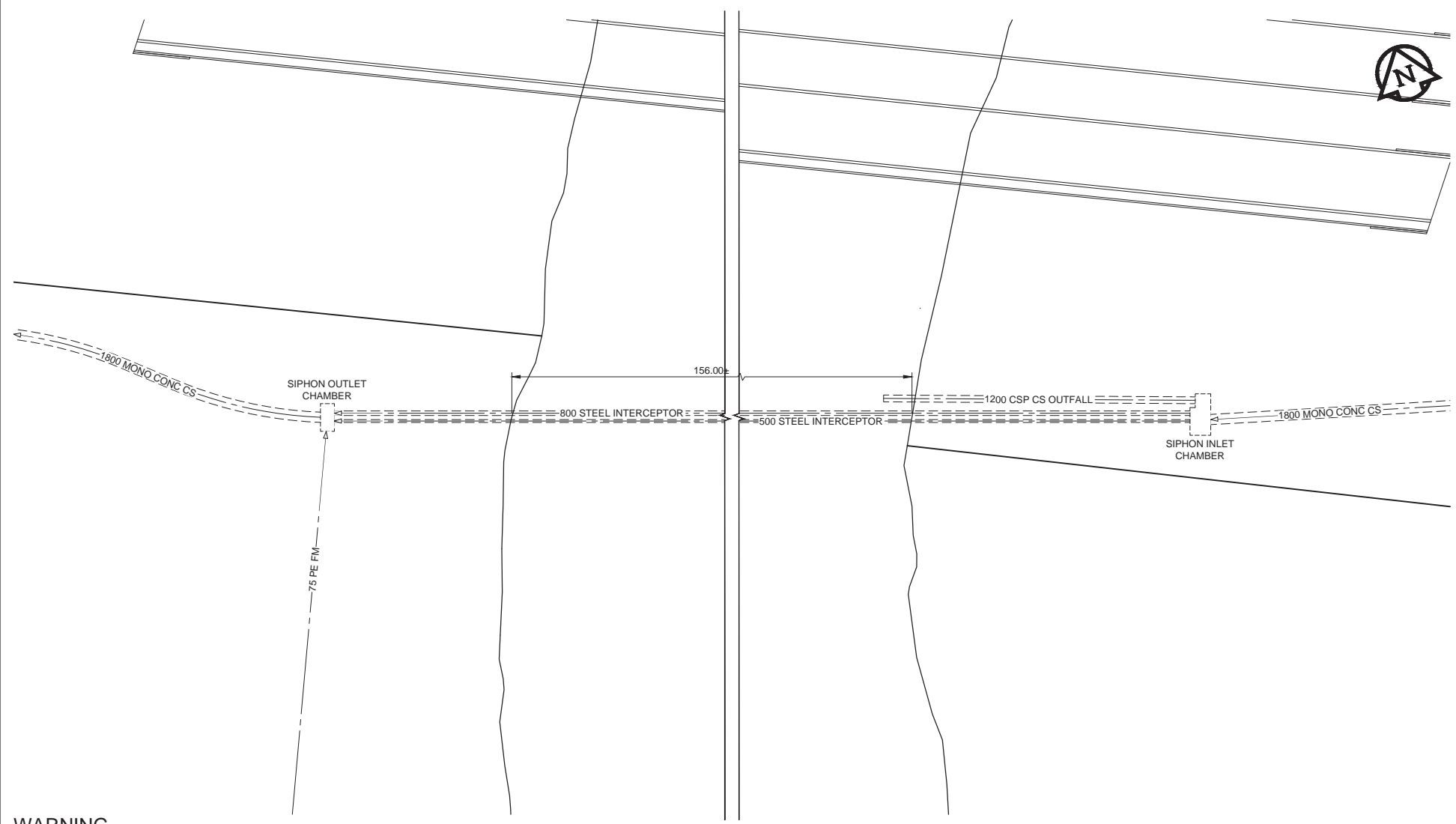
PROFESSIONAL'S SEAL  
 CONSULTANT DRAWING NO.  
 60270487-SHT-00-0000-C-0001

**THE CITY OF WINNIPEG**  
**WATER AND WASTE DEPARTMENT**

**PROVISION OF PIPELINE CLEANING AND SUPPORT SERVICES FOR RIVER CROSSING INSPECTIONS**  
**NEWTON AVENUE FORCEMAIN (Site 3a)**

SHEET	01	OF	04
CITY DRAWING NUMBER			
REV	0		





**PLAN**  
 Scale 1:500  
 0 12.5 25 m

**WARNING**  
 IF POWER EQUIPMENT OR EXPLOSIVES ARE TO BE USED FOR EXCAVATION ON THIS PROJECT, THE CONTRACTOR MUST:  
 1) NOTIFY THE GAS COMPANY OF THE PROPOSED LOCATION OF EXCAVATION.  
 2) TAKE PRECAUTION TO AVOID DAMAGE TO GAS COMPANY INSTALLATIONS.  
 SEE PROVINCIAL REGULATION 140/92 FOR DETAILS

150 WM	WATERMAIN	150 WM	♂	CURB STOP	150 WM	WATERMAIN	150 WM
⊕	HYDRANT	⊕	⊕	REDUCER	⊕	HYDRANT	⊕
⊕	VALVE	⊕	⊕	COUPLING	⊕	VALVE	⊕
300 LDS	LAND DRAINAGE SEWER	300 LDS	⊕	ANODE	300 LDS	LAND DRAINAGE SEWER	300 LDS
250 WWS	WASTE WATER SEWER	250 WWS	⊕	HYDRO	250 WWS	WASTE WATER SEWER	250 WWS
○	MANHOLE	○	⊕	MTS	○	PAVEMENT CROWN	○
□	CATCH BASIN	□	⊕	GAS	□	N/W PROPERTY LINE	□
△	CURB INLET	△	⊕	TESTHOLE	△	S/E PROPERTY LINE	△
⊕	CULVERT	⊕	⊕	LAMP STANDARD	⊕	N/W GUTTER	⊕
⊕	PIPE ABANDONMENTS	⊕	⊕	TREE	⊕	S/E GUTTER	⊕
⊕	SURVEY BAR	⊕	⊕		⊕		⊕
⊕	EXISTING	NEW	EXISTING	LEGEND - PLAN	NEW	EXISTING	LEGEND - PROFILE

**LOCATION APPROVED**  
 UNDERGROUND STRUCTURES  
 SUPPR. U/G STRUCTURES DATE COMMITTEE  
 NOTE:  
 LOCATION OF UNDERGROUND STRUCTURES AS SHOWN ARE BASED ON THE BEST INFORMATION AVAILABLE. BUT NO GUARANTEE IS GIVEN THAT ALL EXISTING UTILITIES ARE SHOWN OR THAT THE GIVEN LOCATIONS ARE EXACT. CONFIRMATION OF EXISTENCE AND EXACT LOCATION OF ALL SERVICES MUST BE OBTAINED FROM THE INDIVIDUAL UTILITIES BEFORE PROCEEDING WITH CONSTRUCTION.

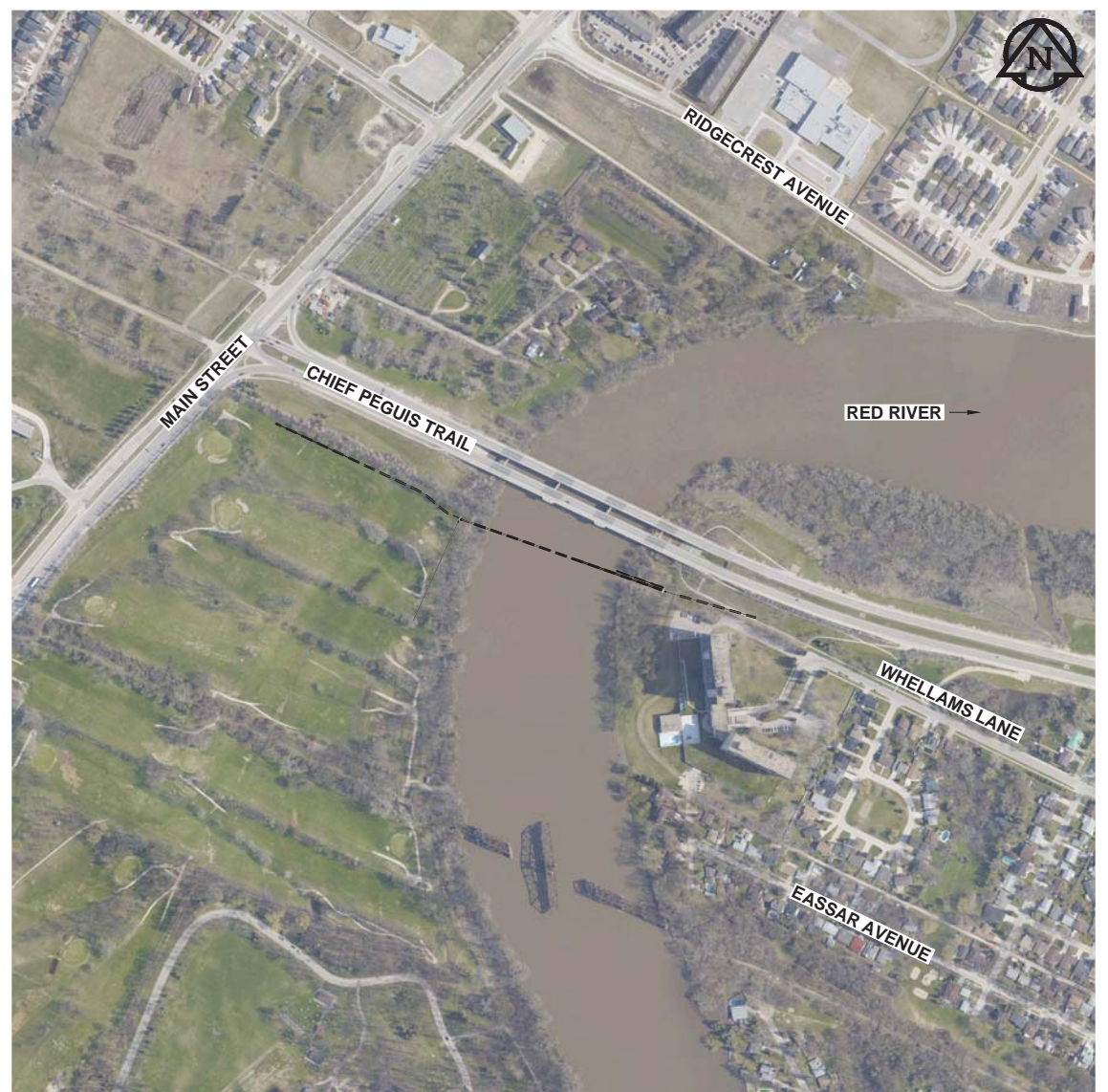
0	ISSUED FOR INFORMATION	13/09/10	KLC
NO.	REVISIONS	YY/MM/DD	BY

<b>AECOM</b>	
DESIGNED BY	ADB
CHECKED BY	
DRAWN BY	ADL
APPROVED BY	
HOR. SCALE	AS NOTED
VERT. SCALE	N/A
RELEASED FOR CONSTRUCTION	
DATE	

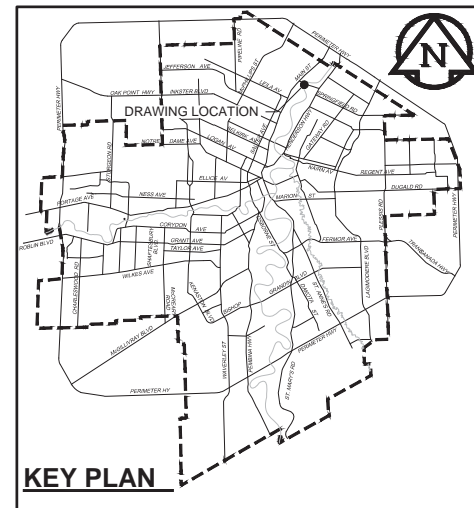
PROFESSIONAL'S SEAL  
 APEGM  
 Certificate of Authorization  
 AECOM Canada Ltd.  
 No. 4671 Date: \_\_\_\_\_

**THE CITY OF WINNIPEG**  
 WATER AND WASTE DEPARTMENT  
 PROVISION OF PIPELINE CLEANING AND SUPPORT SERVICES FOR RIVER CROSSING INSPECTIONS  
 NORTH EAST INTERCEPTOR SIPHON

SHEET	03	OF	04
CITY DRAWING NUMBER			
REV	0		



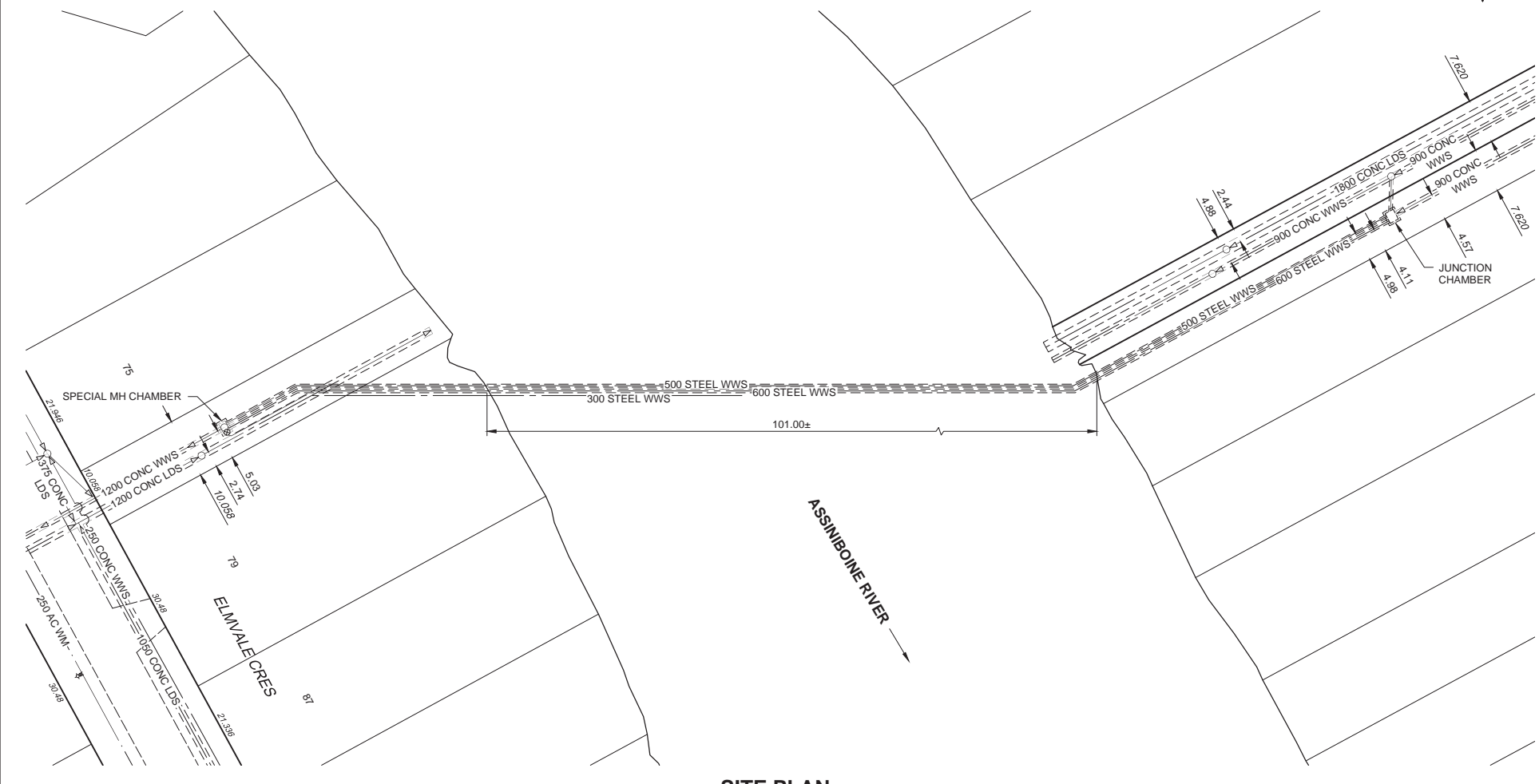
**SITE PLAN**  
 Scale 1:4000  
 0 100 200 m



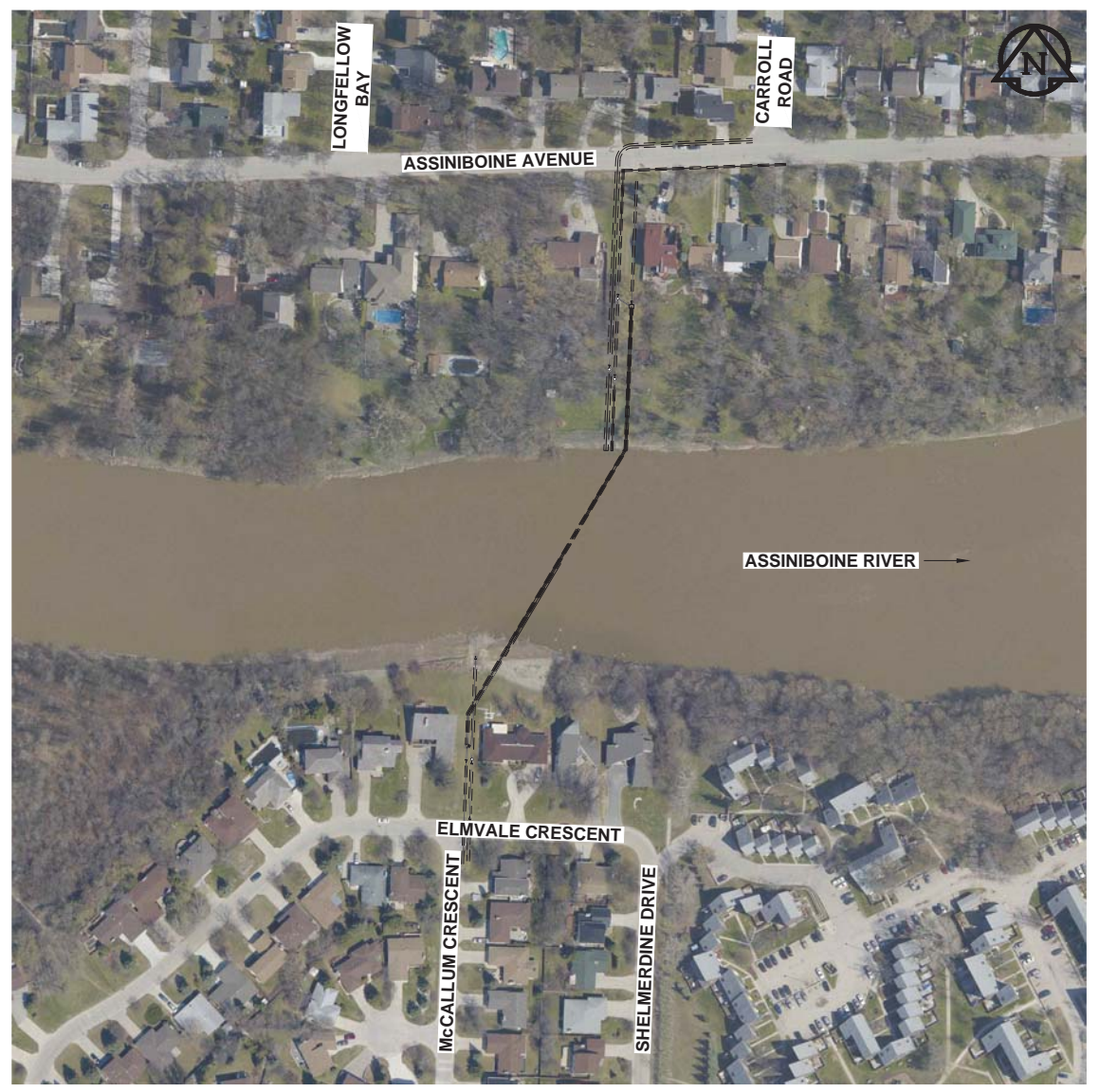
**FOR INFORMATION ONLY**

BID OPPORTUNITY NO. XXX-XXXX

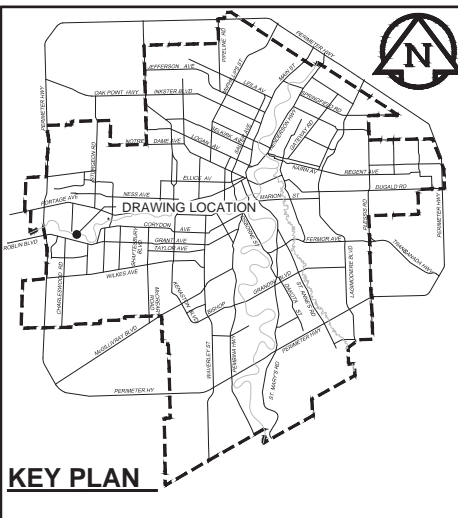




**SITE PLAN**  
 Scale 1:1500  
 0 37.5 75 m



**SITE PLAN**  
 Scale 1:1500  
 0 37.5 75 m



**KEY PLAN**  
 FOR INFORMATION ONLY  
 BID OPPORTUNITY NO. XXX-XXXX

**WARNING**  
 IF POWER EQUIPMENT OR EXPLOSIVES ARE TO BE USED FOR EXCAVATION ON THIS PROJECT, THE CONTRACTOR MUST:  
 1) NOTIFY THE GAS COMPANY OF THE PROPOSED LOCATION OF EXCAVATION.  
 2) TAKE PRECAUTION TO AVOID DAMAGE TO GAS COMPANY INSTALLATIONS.  
 SEE PROVINCIAL REGULATION 140/92 FOR DETAILS

EXISTING	LEGEND - PLAN	NEW	EXISTING	LEGEND - PLAN	NEW	EXISTING	LEGEND - PROFILE	NEW
150 WM	WATERMAIN	150 WM	♂	CURB STOP	♂	150 WM	WATERMAIN	150 WM
♂	HYDRANT	♂	♂	REDUCER	♂	♂	HYDRANT	♂
⊕	VALVE	⊕	⊕	COUPLING	⊕	⊕	VALVE	⊕
300 LDS	LAND DRAINAGE SEWER	300 LDS	♂	ANODE	♂	300 LDS	LAND DRAINAGE SEWER	300 LDS
250 WWS	WASTE WATER SEWER	250 WWS	♂	HYDRO	♂	250 WWS	WASTE WATER SEWER	250 WWS
○	MANHOLE	●	---	MTS	---	---	PAVEMENT CROWN	---
□	CATCH BASIN	■	---	GAS	---	---	N/W PROPERTY LINE	---
△	CURB INLET	▲	♂	TESTHOLE	♂	---	S/E PROPERTY LINE	---
---	CULVERT	---	♂	LAMP STANDARD	♂	---	N/W GUTTER	---
---	PIPE ABANDONMENTS	---	♂	TREE	♂	---	S/E GUTTER	---
+	SURVEY BAR	+	---		---			

**LOCATION APPROVED**  
 UNDERGROUND STRUCTURES  
 SUPR. U/G STRUCTURES DATE COMMITTEE  
 NOTE:  
 LOCATION OF UNDERGROUND STRUCTURES AS SHOWN ARE BASED ON THE BEST INFORMATION AVAILABLE. BUT NO GUARANTEE IS GIVEN THAT ALL EXISTING UTILITIES ARE SHOWN OR THAT THE GIVEN LOCATIONS ARE EXACT. CONFIRMATION OF EXISTENCE AND EXACT LOCATION OF ALL SERVICES MUST BE OBTAINED FROM THE INDIVIDUAL UTILITIES BEFORE PROCEEDING WITH CONSTRUCTION.

NO.	REVISIONS	DATE	BY
0	ISSUED FOR INFORMATION	13/09/10	KLC

**AECOM**

DESIGNED BY: ADB  
 CHECKED BY:  
 DRAWN BY: ADL  
 APPROVED BY:  
 HOR. SCALE: AS NOTED  
 VERT. SCALE: N/A  
 DATE:

PROFESSIONAL'S SEAL  
 APEGM  
 Certificate of Authorization  
 AECOM Canada Ltd.  
 No. 4671 Date:

**THE CITY OF WINNIPEG**  
 WATER AND WASTE DEPARTMENT

PROVISION OF PIPELINE CLEANING AND SUPPORT SERVICES FOR RIVER CROSSING INSPECTIONS  
 ST. JAMES INTERCEPTOR SIPHON (Site 1a)

SHEET 04 OF 04  
 CITY DRAWING NUMBER  
 REV 0

CONSULTANT DRAWING NO. 60270487-SHT-00-0000-C-0008