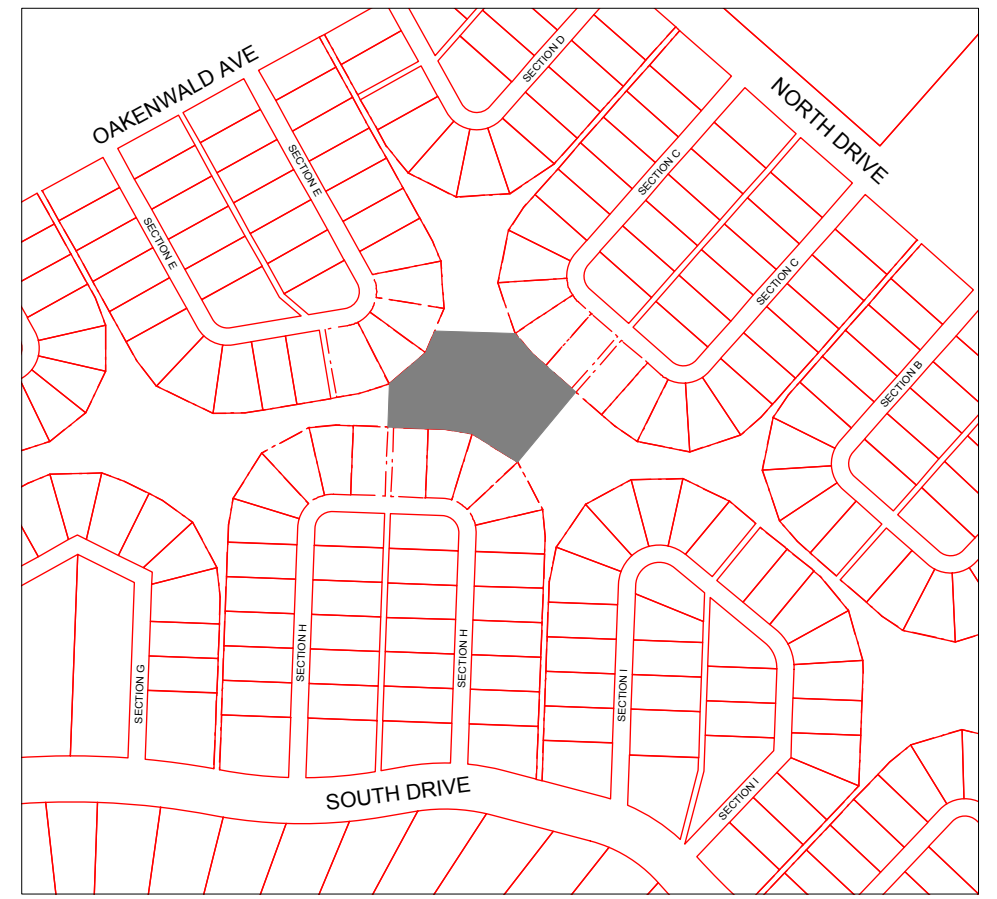



EXISTING CONDITIONS & REMOVALS



LOCATION PLAN n.t.s.

CONTRACTOR TO CONFIRM ALL DIMENSIONS AND REPORT ANY DISCREPANCIES TO CONTRACT ADMINISTRATOR PRIOR TO CONSTRUCTION. LOCATION OF UNDERGROUND STRUCTURES AS SHOWN ARE BASED ON THE BEST INFORMATION AVAILABLE BUT NO GUARANTEE IS GIVEN THAT ALL EXISTING UTILITIES ARE SHOWN OR THAT THE GIVEN LOCATIONS ARE EXACT. CONFIRMATION OF EXISTENCE AND EXACT LOCATION OF ALL SERVICES MUST BE OBTAINED FROM THE INDIVIDUAL UTILITIES BEFORE PROCEEDING WITH CONSTRUCTION.



THE CITY OF WINNIPEG
 Planning, Property and Development Department
 Planning and Land Use Division
 Unit 15 - 30 Fort Street, Winnipeg, MB, (R3C 4X5)

DESIGNED BY	NS	CHECKED BY	
DRAWN BY	NS	APPROVED BY	
HORIZ. SCALE	1:350		
VERT. SCALE			
DATE	NOVEMBER 2014		

MANAGER, PARK AND OPEN SPACES	DATE
MANAGER, PLANNING AND LAND USE DIVISION	DATE

DRAWING TITLE	DRAWING NO.
WILDWOOD PARK PLAYGROUND REDEVELOPMENT EXISTING CONDITIONS & REMOVALS	W.50-F
SITE ADDRESS	BID OPPORTUNITY NO.