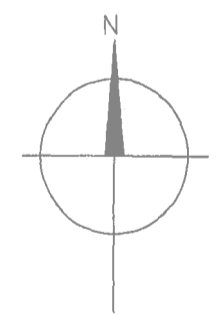
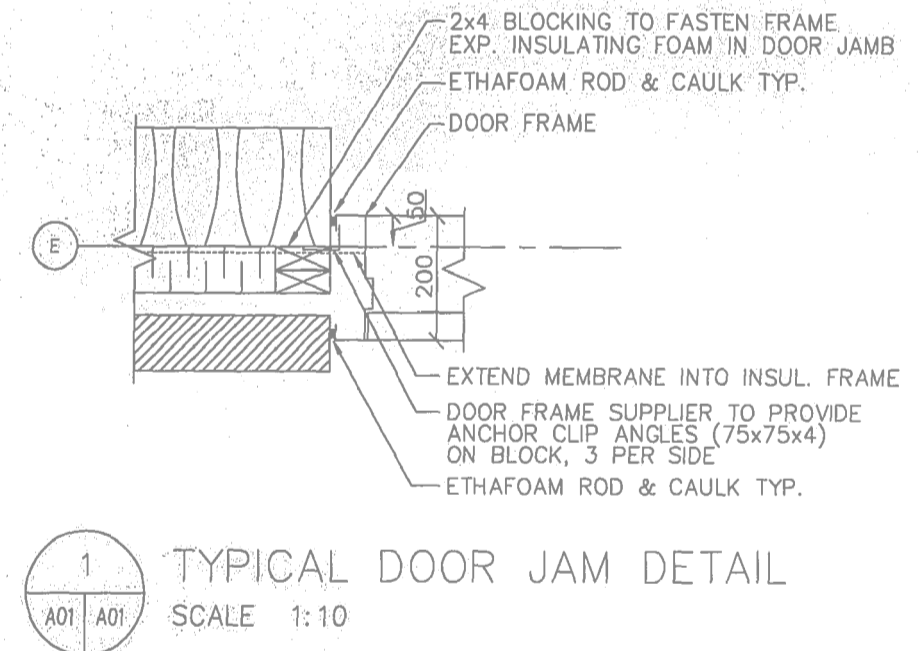
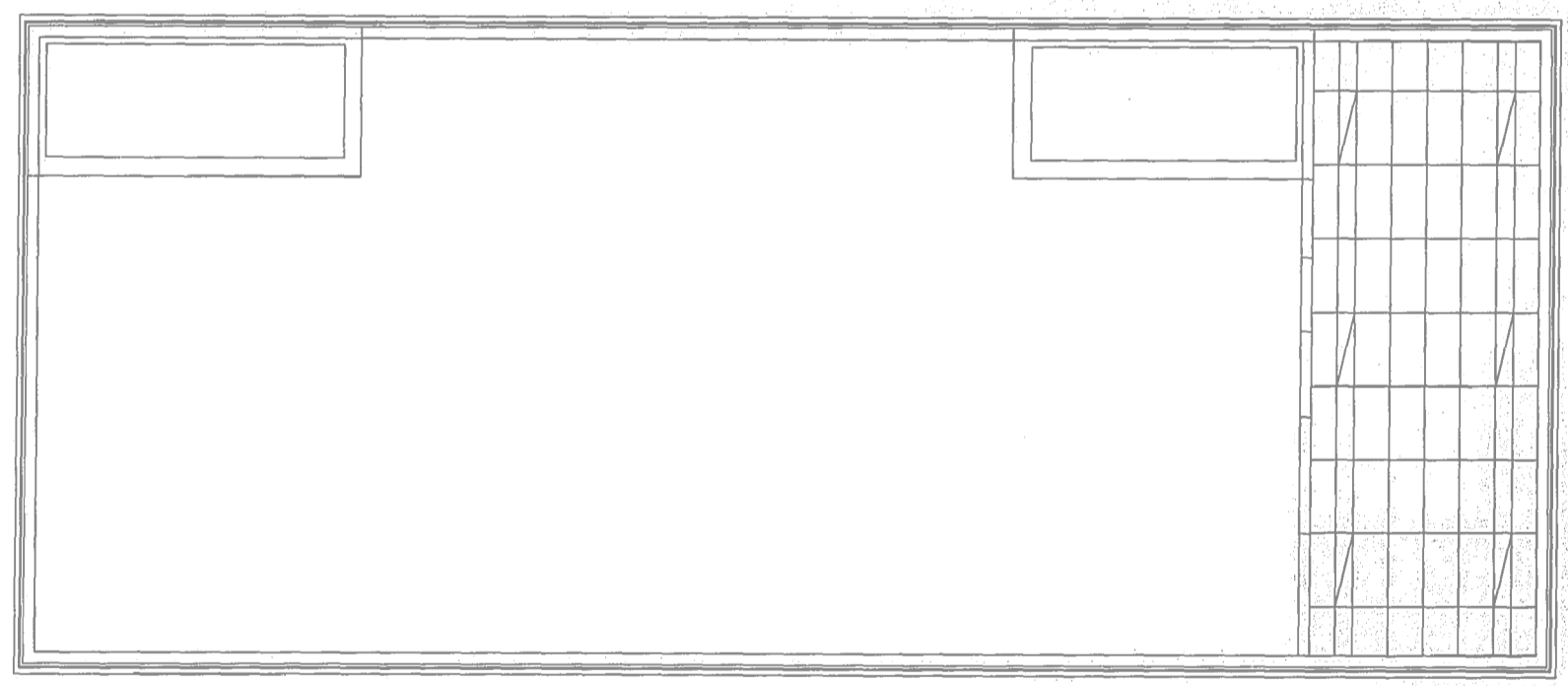
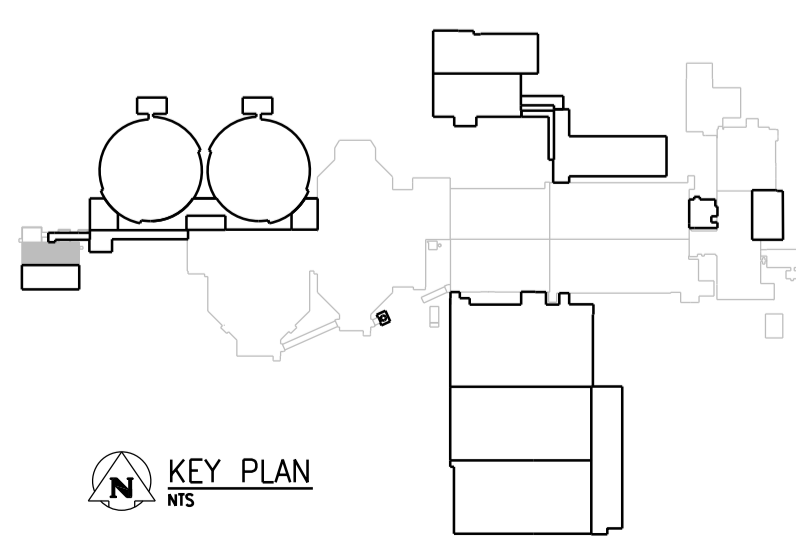


PLAN AT EL. 232.870
NTS REF. DRAWING SEP-2468



- NOTES:**
- REFER TO DRAWING 4-0102-DGAD-A001 FOR DEMOLITION NOTES AND LEGEND.
 - DESIGN AND PROVIDE HOT-DIP GALVANIZED STEEL LINTELS FOR CONCRETE BLOCK AND FACADE. DESIGN IN ACCORDANCE WITH NBC 9.20.5.2. SUBMIT SHOPDRAWINGS SEALED BY A STRUCTURAL ENGINEER LICENSED IN THE PROVINCE OF MANITOBA.
 - REFER TO DRAWING 4-0102-DGAD-S004 FOR OPENINGS THROUGH WALL AND SLAB DETAILS.
 - RELOCATE DOOR AND INSTALL AT NEW OPENING ON WALL AT GRIDLINE C. PROVIDE TEMPORARY WOOD STRUCTURE VESTIBULE ENCLOSURE SIMILAR TO EXISTING.

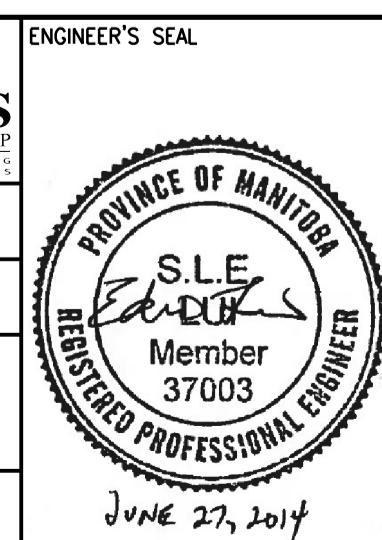


NO.	REVISIONS	DATE	DESIGN	CHECK
00	ISSUED FOR TENDER	06/2014	G.O.	B.W.

CH2MHILL
SNC-LAVALIN

DESIGNED BY: E. LUI
DRAWN BY: G. OMORI
SCALE: NTS
DATE: 2014/06/27
CONSULTANT NO.: 474248

CHECKED BY: B. WILLIAMSON
APPROVED BY: J. CHENG
ISSUED FOR CONSTRUCTION BY:
DATE:



THE CITY OF WINNIPEG
Winnipeg WATER AND WASTE DEPARTMENT

SOUTH END WATER POLLUTION CONTROL CENTRE
SEWPCC UPGRADING/EXPANSION PROJECT
STRUCTURAL
UV DISINFECTION FACILITY
PLANS

CITY DRAWING NUMBER: 4-0102-SGAD-U001
SHEET: 001
REV: 00
SIZE: A1