

CONSTRUCTION KEYNOTES:

- ① RELOCATED LIGHT FIXTURE.
- ② NEW LIGHT FIXTURE. TIE IN FIXTURES AND SWITCHING TO EXISTING CORRIDOR LIGHTING CIRCUIT & SWITCHING. CONFIRM CIRCUIT LOADING.
- ③ TIE-IN FIXTURES & SWITCHING INTO EXISTING MEETING ROOM LIGHTING CIRCUIT. CONFIRM CIRCUIT LOADING.
- ④ TIE-IN FIXTURES & SWITCHING INTO EXISTING DAYCARE LIGHTING CIRCUIT. CONFIRM CIRCUIT LOADING.
- ⑤ PROVIDE NEW CIRCUIT AND LIGHT SWITCH FOR THIS ROOM 006.

LEGEND:

- 9'-0" CEILING HEIGHT ABOVE FINISHED FLOOR
- ACT ACOUSTIC CEILING TILE
- CT CEILING TILE
- EX EXISTING
- RELOCATED LIGHT FIXTURE
- NEW LIGHT FIXTURE
- EXISTING LIGHT FIXTURE TO REMAIN AS-IS
- EXISTING LIGHT FIXTURE TO REMAIN AS-IS
- \$ SWITCH

SEPARATIONS

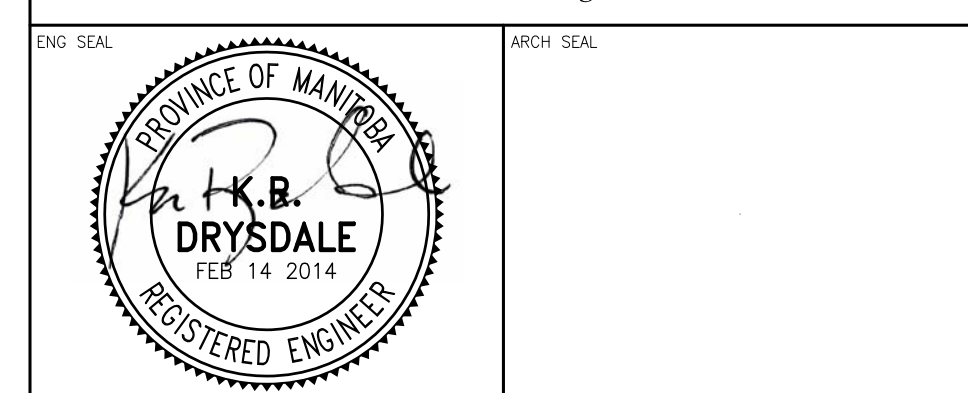
- 1 HOUR FIRE RATED

A NEW REFLECTED CEILING PLAN
B104 1/4" = 1' - 0"



7				
6				
5				
4				
3				
2				
1				
0	ISSUED WITH ADDENDUM #3	VCV	KRD	FEB 14 2014
REV	DESCRIPTION	DWN	APP	REV DATE

Accutech Engineering Inc.
Tomorrow's Technology Today
605-287 Broadway, Winnipeg, Manitoba Canada R3C 0R9
Phone 204.944.1555 Fax 204.944.1444
www.accutech.ca



CITY OF WINNIPEG
SIR JOHN FRANKLIN CC BASEMENT STRUCTURAL REPAIRS

SHEET TITLE			
NEW REFLECTED CEILING PLAN			
BID OPPORTUNITY No. 32-2014			
DRAWN BY	CHECKED BY	DATE	SHEET NO.
VCV	KRD	FEB 14 2014	B104
DESIGNED BY	CHECKED BY	SCALE	REVISION NO.
KRD	KRD	AS NOTED	0