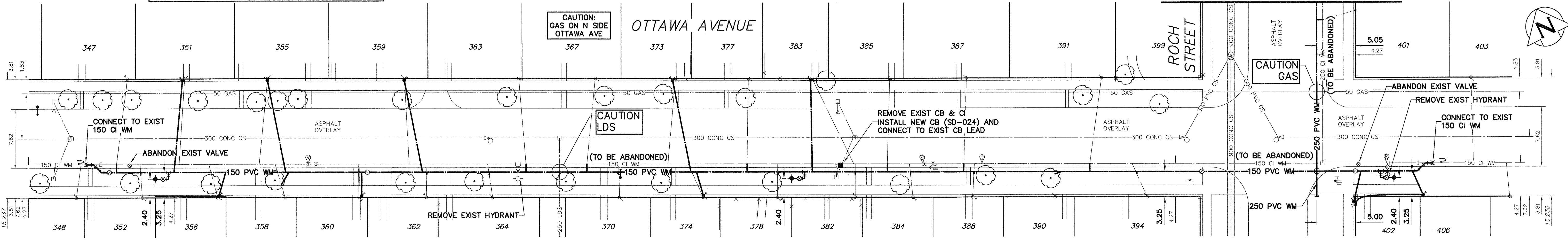


NOTE: CHAINAGES SHOWN ARE ALONG S. P. OF OTTAWA AVE

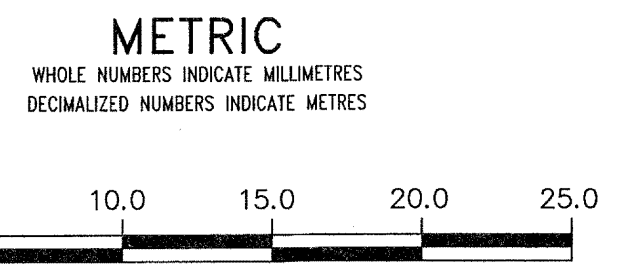


WATER SERVICE INFORMATION

ADDRESS	SIZE (mm)	SIZE (mm) MATERIAL (PROP.)	SHORT & LONG MEASUREMENT	CORPORATION LOCATION	REMARKS	ADDRESS	SIZE (mm)	SIZE (mm) MATERIAL (PROP.)	SHORT & LONG MEASUREMENT	CORPORATION LOCATION	REMARKS	ADDRESS	SIZE (mm)	SIZE (mm) MATERIAL (PROP.)	SHORT & LONG MEASUREMENT	CORPORATION LOCATION	REMARKS
347 OTTAWA AV	12	12	0.8 W E HSE LINE	54.0 E HYD	SERVICE BOX PREVIOUSLY RENEWED	363 OTTAWA AV	20	20	0.6 E E LOTLINE	0.6 E S/C		384 OTTAWA AV	20	20	0.6 W E BLDG LINE	0.5 W S/C	
348 OTTAWA AV	12	12	0.8 W E LOTLINE	49.4 E HYD		364 OTTAWA AV	12	12	4.4 E W LOTLINE	4.0 W HYD		385 OTTAWA AV	20	20	1.5 W E LOTLINE	47.7 E HYD	
351 OTTAWA AV	12	12	4.1 E W LOTLINE	43.9 W HYD	RENEW TO PROPERTY	367 OTTAWA AV	12	12	3.1 W E LOTLINE	8.8 E HYD		387 OTTAWA AV	20	20	5.2 E W HSE LINE	57.6 E HYD	SERVICE BOX PREVIOUSLY RENEWED
352 OTTAWA AV	12	28	1.4 W E LOTLINE	57.0 E HYD		370 OTTAWA AV	20	20	3.7 W E LOTLINE	13.0 E HYD		388 OTTAWA AV	20	12	2.0 W E BLDG LINE	59.0 E HYD	REVERSE TAP
355 OTTAWA AV	12	12	2.0 E W LOTLINE	33.5 W HYD	RENEW TO PROPERTY	373 OTTAWA AV	12	12	1.4 W E LOTLINE	19.3 E HYD	RENEW TO PROPERTY	390 OTTAWA AV	20	12	0.4 W E BLDG LINE	OPP S/C	
356 OTTAWA AV	12	12	ON E LINE	40.1 W HYD	RENEW TO PROPERTY	374 OTTAWA AV	12	12	1.7 W E LOTLINE	22.0 E HYD	RENEW TO PROPERTY	391 OTTAWA AV	20	20	1.2 W E LOTLINE	38.4 W HYD	
358 OTTAWA AV	20	12	0.6 W E HSE LINE	31.5 W HYD		377 OTTAWA AV	20	20	1.5 W E LOTLINE	29.6 E HYD		394 OTTAWA AV	12	12	3.2 W E LOTLINE	32.9 W HYD	
359 OTTAWA AV	20	20	2.1 W E HSE LINE	0.6 E S/C	RENEW TO PROPERTY	378 OTTAWA AV	20	12	1.2 W E HSE LINE	33.5 E HYD	S/C PREVIOUSLY RENEWED	402 OTTAWA AV	-	12	3.5 N N/L PORCH	DBL SER 402 & 406 OTTAWA S/C OFF	
360 OTTAWA AV	12	12	OPP E LINE	20.7 W HYD	RENEW TO PROPERTY	382 OTTAWA AV	20	12	0.3 W E HSE LINE	OPP S/C		403 OTTAWA AV	-	12	2.1 E W LOTLINE	11.3 E HYD	
362 OTTAWA AV	-	-	1.2 W E LOTLINE	-		383 OTTAWA AV	12	12	1.8 W E LOTLINE	43.4 E HYD	RENEW TO PROPERTY	406 OTTAWA AV	-	12	3.7 N N/L PORCH OF 402	DBL SER 402 & 406 OTTAWA S/C OFF	
																	ROCH-S S/C IS 406 RENEW TO PROPERTY

NOTE: REPLACE ALL EXISTING LEAD SERVICES FROM THE PROPOSED WATERMAIN TO PROPERTY LINE. RECONNECT ALL OTHER SERVICES UNLESS NOTED. LOCATION OF WATER SERVICES SHOWN ON DRAWINGS ARE APPROXIMATE. THE CONTRACTOR SHALL FIELD LOCATE ALL WATER SERVICES PRIOR TO CONSTRUCTION.

ALL VALVES TO BE COUNTER-CLOCKWISE TO CLOSE (RED OPERATING NUT)



WARNING
IF POWER EQUIPMENT OR EXPLOSIVES ARE TO BE USED FOR EXCAVATION ON THIS PROJECT THE CONTRACTOR MUST:
1) NOTIFY THE GAS COMPANY OF THE PROPOSED LOCATION OF EXCAVATION.
2) TAKE PRECAUTION TO AVOID DAMAGE TO GAS COMPANY INSTALLATIONS.
SEE PROVINCIAL REGULATION 210/72 FOR DETAILS

LOCATION APPROVED UNDERGROUND STRUCTURES
SUPV. U/G STRUCTURES COMMITTEE DATE
NOTE:
LOCATION OF UNDERGROUND STRUCTURES AS SHOWN ARE BASED ON THE BEST INFORMATION AVAILABLE BUT NO GUARANTEE IS GIVEN THAT ALL EXISTING UTILITIES ARE SHOWN OR THAT THE GIVEN LOCATIONS ARE EXACT. CONFIRMATION OF EXISTENCE AND EXACT LOCATION OF ALL SERVICES MUST BE OBTAINED FROM THE INDIVIDUAL UTILITIES BEFORE PROCEEDING WITH CONSTRUCTION.

B.M. 27-021 ELEV. 230.493m
85R629-S.W. Cor. Roch St. & Munroe Ave., Tbl. on top of 0.85 m dia. x 2.4 m iron pipe, 4.2 m E. of W.

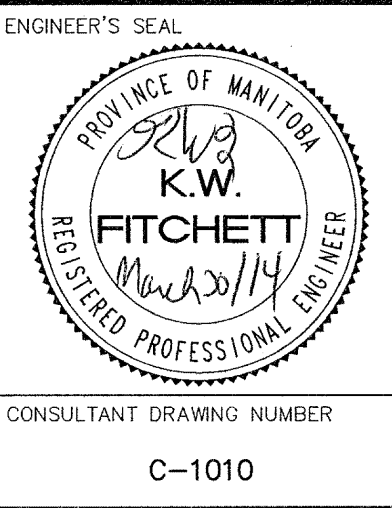
NO.	ISSUED FOR TENDER	DATE	BY
0	ISSUED FOR TENDER	14/03/25	GSK
A	ISSUED FOR REVIEW	14/03/19	GSK

AECOM

DESIGNED BY GK
CHECKED BY [Signature]
DRAWN BY JP
APPROVED BY [Signature]
RELEASED FOR CONSTRUCTION [Signature]

SCALE: HORIZONTAL 1:250
VERTICAL 1:50

DATE: 2014 03 20



THE CITY OF WINNIPEG
WATER AND WASTE DEPARTMENT
ENGINEERING DIVISION

2014 WATERMAIN RENEWALS
CONTRACT 2
OTTAWA AVENUE
150m EAST OF BRAZIER STREET TO
ROCH STREET

SHEET 11 OF 15
CITY DRAWING NUMBER
D-13526

CONSULTANT DRAWING NUMBER
C-1010