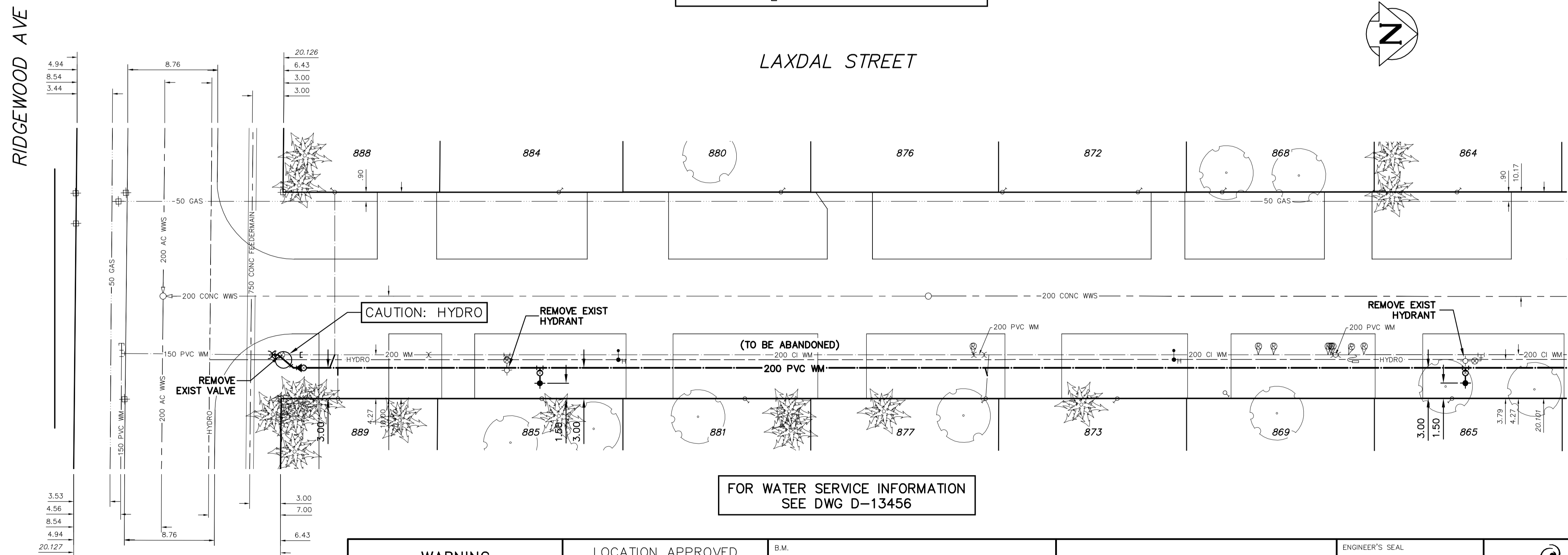
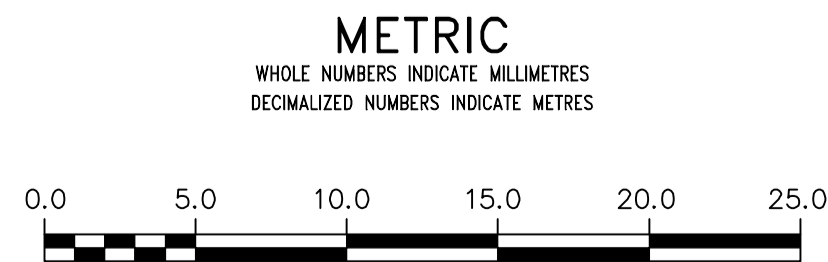


NOTE: CHAINAGES SHOWN ARE ALONG E. R.L. OF LAXDAL ST.



FOR WATER SERVICE INFORMATION SEE DWG D-13456

VALVES TO BE COUNTER-CLOCKWISE TO CLOSE (RED OPERATING NUT)



WARNING
 IF POWER EQUIPMENT OR EXPLOSIVES ARE TO BE USED FOR EXCAVATION ON THIS PROJECT THE CONTRACTOR MUST:
 1) NOTIFY THE GAS COMPANY OF THE PROPOSED LOCATION OF EXCAVATION.
 2) TAKE PRECAUTION TO AVOID DAMAGE TO GAS COMPANY INSTALLATIONS.
 SEE PROVINCIAL REGULATION 210/72 FOR DETAILS.

LOCATION APPROVED UNDERGROUND STRUCTURES
 SUPV. U/G STRUCTURES COMMITTEE DATE
 NOTE:
 LOCATION OF UNDERGROUND STRUCTURES AS SHOWN ARE BASED ON THE BEST INFORMATION AVAILABLE BUT NO GUARANTEE IS GIVEN THAT ALL EXISTING UTILITIES ARE SHOWN OR THAT THE GIVEN LOCATIONS ARE EXACT. CONFIRMATION OF EXISTENCE AND EXACT LOCATION OF ALL SERVICES MUST BE OBTAINED FROM THE INDIVIDUAL UTILITIES BEFORE PROCEEDING WITH CONSTRUCTION.

B.M. ELEV.		CONSTRUCTION COMPLETION DATE: YYYY MM DD	
DESIGNED BY	TS	CHECKED BY	SC
DRAWN BY	SM	APPROVED BY	KZ
SCALE:		RELEASED FOR CONSTRUCTION	
HORIZONTAL	1:250		
VERTICAL	1:50		
NO.	REVISIONS	DATE	BY
		2014 02 28	

ENGINEER'S SEAL
ORIGINAL SIGNED BY S.R.J. COURNOYER 14-02-28
 CONSULTANT DRAWING NUMBER

THE CITY OF WINNIPEG
 WATER AND WASTE DEPARTMENT
 ENGINEERING DIVISION
 2014 WATER RENEWALS
LAXDAL STREET
 RIDGEWOOD AVENUE TO
 18 S OF BRITANNY DRIVE

Winnipeg
 SHEET 2 OF 11
 CITY DRAWING NUMBER
D-13455