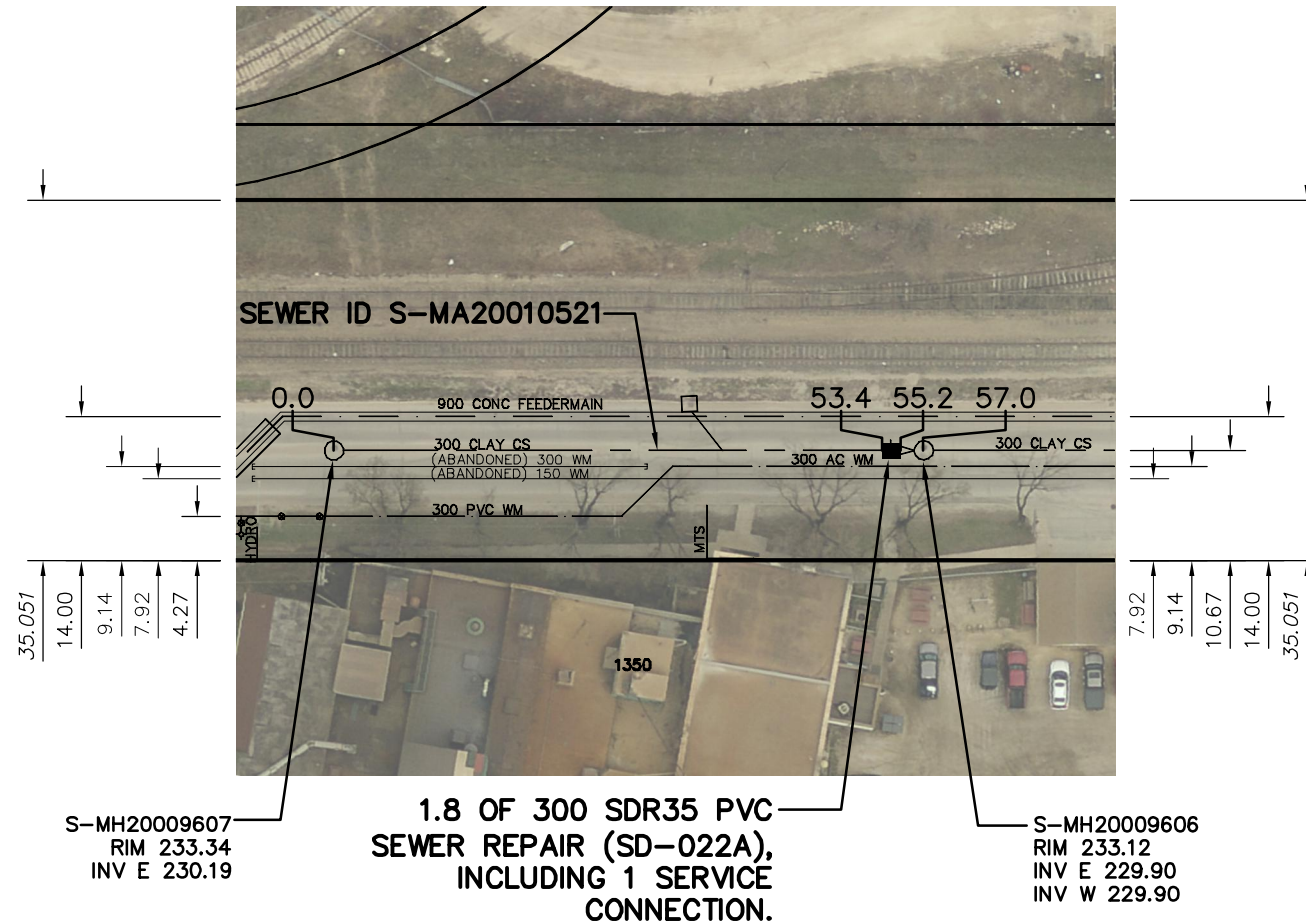




# SASKATCHEWAN AVENUE



SEWER JUNCTION INFORMATION FROM SEWER VIDEO INSPECTION		
SEWER ID S-MA20010521		
DISTANCE FROM MH ID S-MH20009607		
DISTANCE	DIAMETER	CLOCK
4.8	150	2
6.0	150	2
35.8	150	10
37.2	150	2
37.9	150	10
41.0	150	2
49.7	150	2
52.7	150	2
54.2	150	10

1.8 OF 300 SDR35 PVC SEWER REPAIR (SD-022A), INCLUDING 1 SERVICE CONNECTION.

**CAUTION:  
FEEDERMAIN**

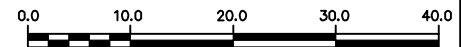
### WARNING

IF POWER EQUIPMENT OR EXPLOSIVES ARE TO BE USED FOR EXCAVATION ON THIS PROJECT THE CONTRACTOR MUST:

- 1) NOTIFY THE GAS COMPANY OF THE PROPOSED LOCATION OF EXCAVATION.
- 2) TAKE PRECAUTION TO AVOID DAMAGE TO GAS COMPANY INSTALLATIONS.

SEE PROVINCIAL REGULATION 210/72 FOR DETAILS

**METRIC**  
WHOLE NUMBERS INDICATE MILLIMETRES  
DECIMALIZED NUMBERS INDICATE METRES



LOCATION APPROVED  
UNDERGROUND STRUCTURES

SUPV. U/G STRUCTURES COMMITTEE DATE

NOTE:  
LOCATION OF UNDERGROUND STRUCTURES AS SHOWN ARE BASED ON THE BEST INFORMATION AVAILABLE BUT NO GUARANTEE IS GIVEN THAT ALL EXISTING UTILITIES ARE SHOWN OR THAT THE GIVEN LOCATIONS ARE EXACT. CONFIRMATION OF EXISTENCE AND EXACT LOCATION OF ALL SERVICES MUST BE OBTAINED FROM THE INDIVIDUAL UTILITIES BEFORE PROCEEDING WITH CONSTRUCTION.

B.M. ELEV.			
CONSTRUCTION COMPLETION DATE: YYYY MM DD			
NO.	REVISIONS	DATE	BY

DESIGNED BY	TS	CHECKED BY	SC
DRAWN BY	MA	APPROVED BY	KZ
SCALE:	1:750	RELEASED FOR CONSTRUCTION	
HORIZONTAL			
VERTICAL			
DATE	2014 12 16	DATE	

ENGINEER'S SEAL  
**ORIGINAL  
SIGNED BY  
S.R.J.  
COURNOYER  
14/12/12**  
CONSULTANT DRAWING NUMBER



**THE CITY OF WINNIPEG**  
WATER AND WASTE DEPARTMENT  
ENGINEERING DIVISION

2014 SEWER RENEWALS  
AND REPAIRS  
**SASKATCHEWAN AVENUE**  
1ST MH E OF EMPRESS STREET TO  
2ND MH E OF EMPRESS STREET

SHEET **22** OF **30**  
CITY DRAWING NUMBER  
**10949**