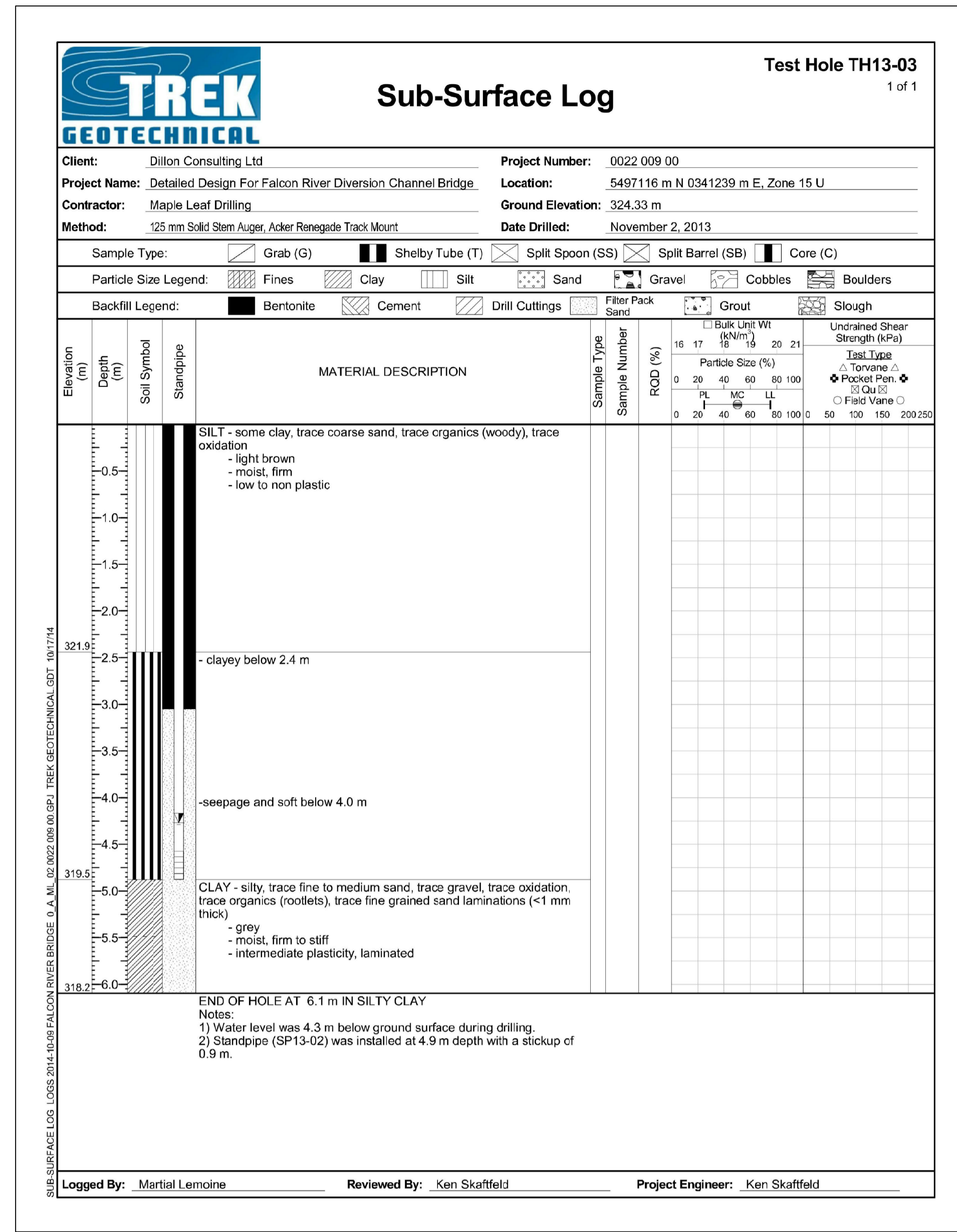


BORE HOLE NO. 3 (1 OF 1)
TREK TEST HOLE TH13-01



BORE HOLE NO. 5 (1 OF 1)
TREK TEST HOLE TH13-03

NOTES:

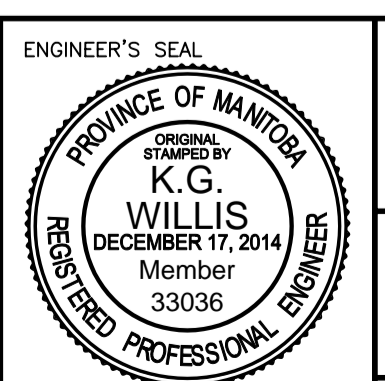
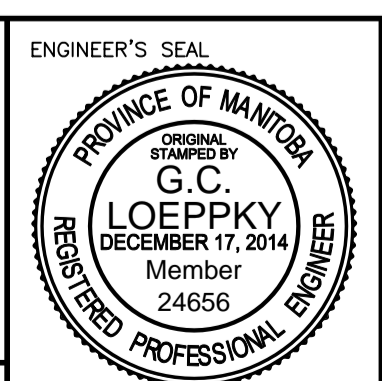
1. THE TEST HOLE LOGS PROVIDED FOR THIS PROJECT HAVE BEEN COMPILED FOR DESIGN PURPOSES ONLY. WHILE THEY ARE BELIEVED TO CORRECTLY REPRODUCE OR SUMMARIZE OBSERVATIONS DURING TESTING, THE INFORMATION IS VALID ONLY FOR THE PRECISE LOCATIONS SHOWN AND IS NOT TO BE CONSTRUED AS GUARANTEEING THE ACTUAL MATERIALS AND CONDITIONS EXISTING THROUGHOUT THE SITE, THE TESTING METHODS USED MAY NOT HAVE DETERMINED THE PRESENCE, ABSENCE OR EXTENT OF BOULDERS, HARD OR SOFT FORMATIONS, WATER TABLES, ARTESIAN CONDITIONS AND OTHER VARIABLES. IT IS THE RESPONSIBILITY OF OTHERS USING THIS INFORMATION TO ENSURE THAT IT IS ADEQUATE FOR THEIR PURPOSES OR TO SUPPLEMENT IT WITH ADDITIONAL INFORMATION.
2. THIS INFORMATION IS COMPILED FOR CONVENIENCE FROM THE 'GEOTECHNICAL REPORT FALCON RIVER DIVERSION BRIDGE', PROVIDED BY TREK GEOTECHNICAL. ALL DISCLAIMERS IN THIS REPORT ARE APPLICABLE. ADDITIONAL INFORMATION IS AVAILABLE IN THE REPORT AND IN CASE OF DISCREPANCY, THE GEOTECHNICAL REPORT GOVERNS.
3. FOR THE LOCATION OF BORE HOLES IN PLAN SEE SHEET 01.

METRIC

WHOLE NUMBERS INDICATE MILLIMETRES
DECIMALIZED NUMBERS INDICATE METRES



B.M. ELEV.	DESIGNED BY	GCL
	DRAWN BY	JLD
	CHECKED BY	MBL
	APPROVED BY	MBL
	HOR. SCALE	RELEASED FOR CONSTRUCTION
0 ISSUED FOR TENDER	14/12/17	GCL
NO. REVISIONS	DATE	BY
	2014/12/17	



BRIDGE OVER THE FALCON RIVER DIVERSION & ASSOCIATED ROADWORKS	CITY DRAWING NUMBER	----
	SHEET	03 OF 13
BORE HOLE DETAILS 2 OF 3	CONSULTANT DRAWING NUMBER	